

# 629 MINNESOTA DRIVE

TROY, MI

INDUSTRIAL SPACE FOR LEASE  
3,615 Sq. Ft. Available

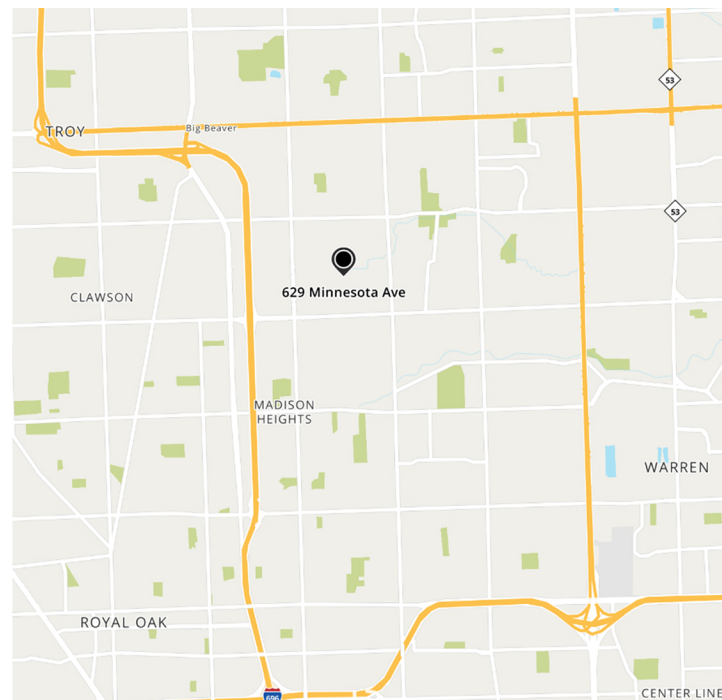
# MAX BROOCK

NEWLY RENOVATED FLEX SPACE



## PROPERTY FEATURES

- 3,615 Sq. Ft.
- 500 Sq. Ft. of Office featuring Coffee Bar Station
- Fully Air Conditioned
- 14ft Clear Shop Ceiling Height
- (1) Grade Level Overhead Door
- (18) Dedicated Parking Spaces
- Newly Renovated
- Easy Access to I-75 Expressway
- Zoned IB | Multiple Uses Allowed
- Lease Rate: \$11/Sq. Ft. NNN



For more information, please contact:

DAVID YOUSIF  
248.417.7135  
DYOUSIF@REALESTATEONE.COM

MAX BROOCK REALTORS

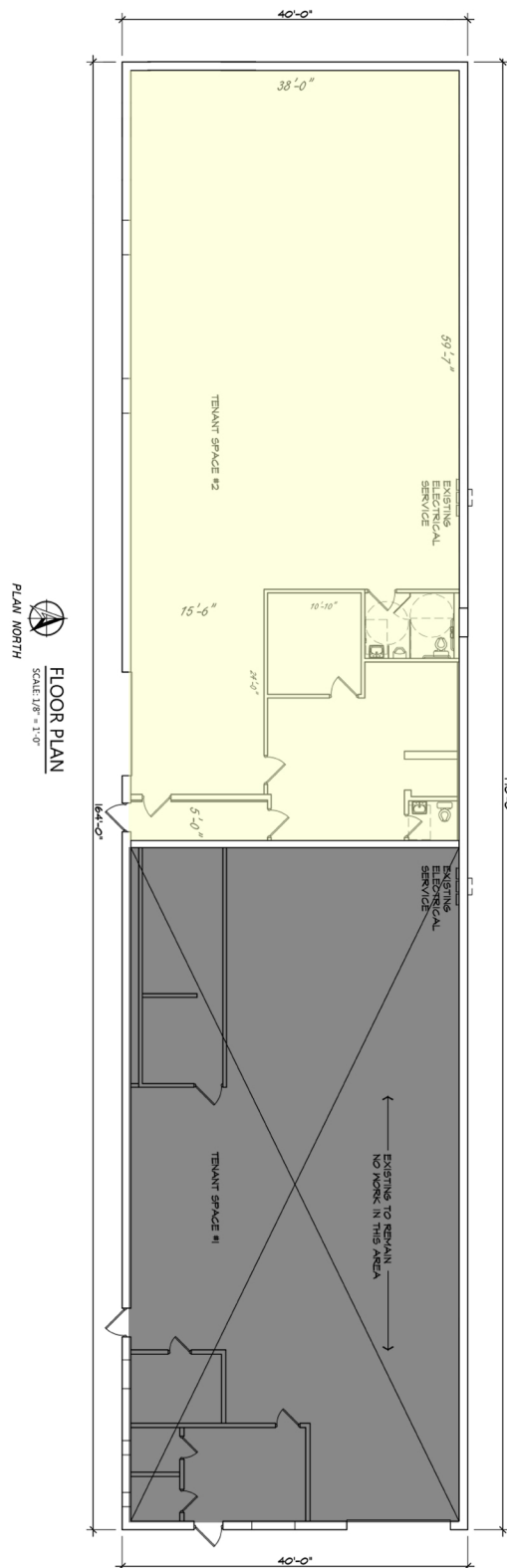
6960 Orchard Lake Rd #150,  
West Bloomfield Township, MI  
248.851.1900

3,615  
Square Feet  
AVAILABLE

629 MINNESOTA DRIVE | TROY, MICHIGAN  
INDUSTRIAL SPACE FOR LEASE

NEWLY RENOVATED FLEX SPACE

**MAX BROOCK**



**AVAILABLE SPACE**  
629 Minnesota Drive  
3,615 Sq. Ft.

**OCCUPIED**  
631 Minnesota Drive  
3,200 Sq. Ft.

For more information, please contact:

DAVID YOUSIF  
248.417.7135  
DYOUSIF@REALESTATEONE.COM

MAX BROOCK REALTORS

6960 Orchard Lake Rd #150,  
West Bloomfield Township, MI  
248.851.1900



3,615  
Square Feet  
AVAILABLE

629 MINNESOTA DRIVE | TROY, MICHIGAN  
INDUSTRIAL SPACE FOR LEASE

NEWLY RENOVATED FLEX SPACE

**MAX BROOCK**



For more information, please contact:

DAVID YOUSIF  
248.417.7135  
DYOUSIF@REALESTATEONE.COM

MAX BROOCK REALTORS

6960 Orchard Lake Rd #150,  
West Bloomfield Township, MI  
248.851.1900