

2038 Concourse Dr

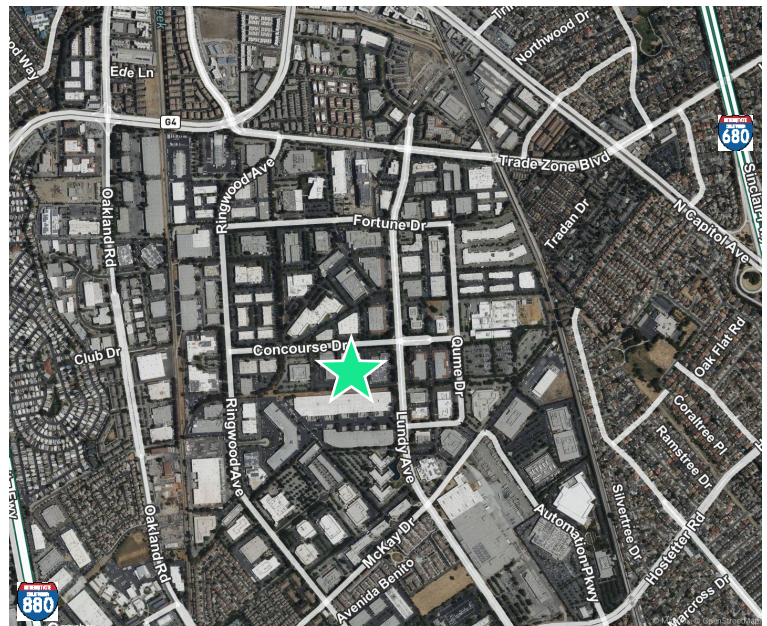
San Jose, CA 95131
www.cbre.com

±20,598 SF | Unit B



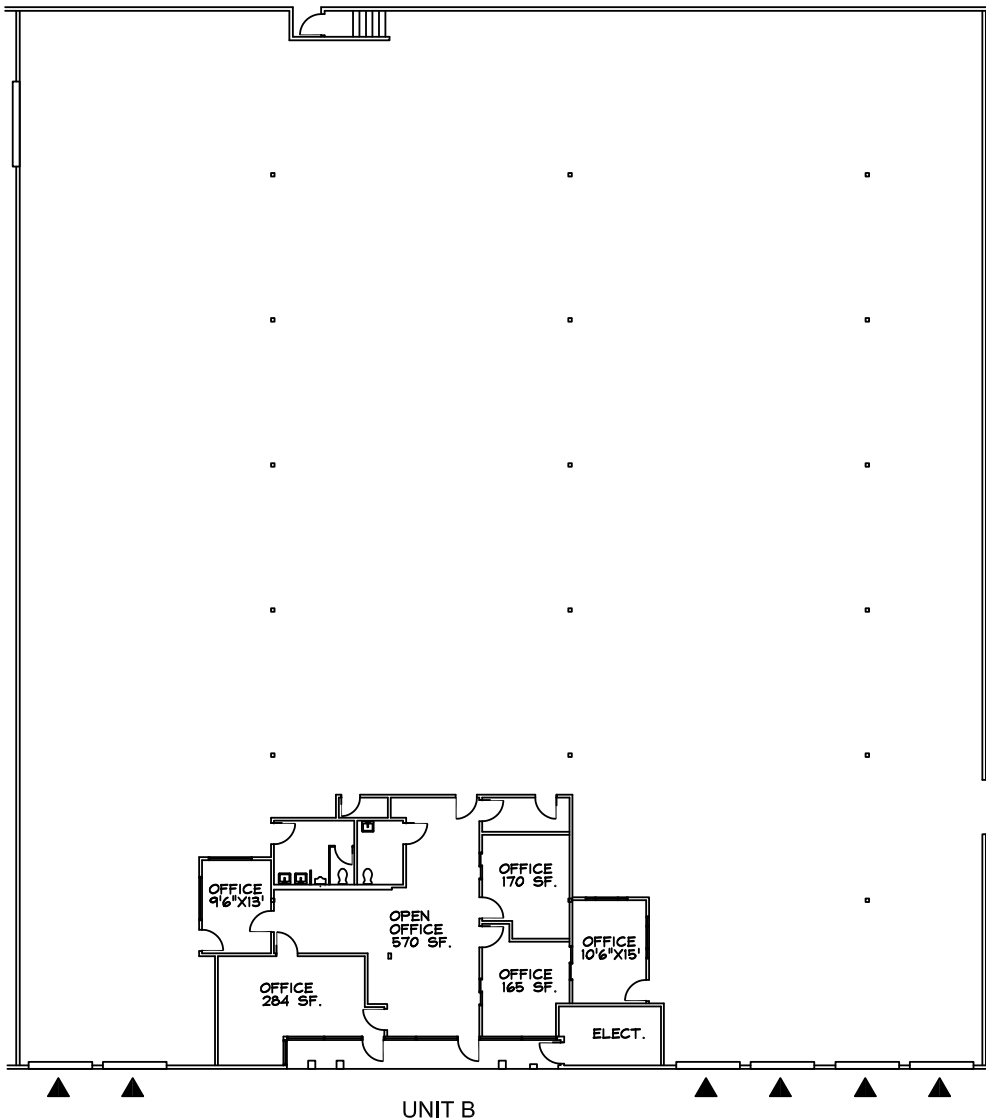
Property Highlights

- + ±20,598 SF Industrial
- + Unit B: ±20,598 SF
±18,752 SF Warehouse; ±1,846 SF Office
- + 20' clear height
- + 20' 6" x 42" Typical Column Spacing
- + 6 Dock Doors
- + 600 Amps 120/480 Volts
- + Excellent access to Highways 880, 680, 101 and 237
- + Close proximity to Milpitas BART Station
- + Abundant retail and food amenities located nearby at Great Mall and on Hostetter Rd/Murphy Ave.



Floor Plan

2038 Concourse Drive
San Jose, CA 95131



OFFICE	1,846 S.F.
WAREHOUSE	18,752 S.F.
TOTAL	20,598 S.F.

▲ Dock High Door
NOT TO SCALE



Contact Us

Jim Kovaleski

Senior Vice President
+1 408 453 7451
jim.kovaleski@cbre.com
Lic. 00846878

Craig Kovaleski

Senior Vice President
+1 408 453 7407
craig.kovaleski@cbre.com
Lic. 01303011

© 2024 CBRE, Inc. All rights reserved. This information has been obtained from sources believed reliable but has not been verified for accuracy or completeness. CBRE, Inc. makes no guarantee, representation or warranty and accepts no responsibility or liability as to the accuracy, completeness, or reliability of the information contained herein. You should conduct a careful, independent investigation of the property and verify all information. Any reliance on this information is solely at your own risk. CBRE and the CBRE logo are service marks of CBRE, Inc. All other marks displayed on this document are the property of their respective owners, and the use of such marks does not imply any affiliation with or endorsement of CBRE. Photos herein are the property of their respective owners. Use of these images without the express written consent of the owner is prohibited.