



CANDLER

REAL ESTATE

5662 Cemetery Rd | Lula, GA 30554
Industrial Outdoor Storage For Lease

LEE HEMMER, CCIM, SIOR

Principal/Managing Broker lee@candler.com

Candler Real Estate | 135 Maple Street NW, Gainesville GA | 770.988.6383 | candler.com

Local Understanding
+ Industry Expertise

INDUSTRIAL IOS FOR LEASE

5662 Cemetery Rd, Lula, GA 30554



Property Highlights

- 725 feet of frontage on Ga-52 (Lula Road)
- 1000 feet of frontage on Norfolk Southern Rail
- Includes 2,410 sq. ft. Office Building
- Detached office/service building: 585 square feet
- Utility building: 16' x 18'
- Shop: 20' x 24'
- Lean-to: 12' x 15'
- Pole Shed: 20' x 48'
- 4 miles from the Blue Ridge Connector (Inland Port)
- 11 miles from Northeast Georgia Medical Center
- 15 miles from Lee Gilmer Memorial Gainesville, Airport
- 75 miles from Hartsfield-Jackson International Airport

Offering Summary

Lease Rate:	Negotiable
Number of Units:	1
Available SF:	2,410 SF
Lot Size:	18.26 Acres

Demographics	1 Mile	3 Miles	5 Miles
Total Households	509	1,896	3,886
Total Population	1,377	5,121	10,455
Average HH Income	\$75,630	\$79,584	\$82,810

Presented By:

Lee Hemmer, CCIM, SIOR

770.988.6383

Principal/Managing Broker

lee@candler.com



135 Maple Street NW, Gainesville, GA 30501 | 770.988.6383 | candler.com

INDUSTRIAL IOS FOR LEASE

5662 Cemetery Rd, Lula, GA 30554



Presented By:

Lee Hemmer, CCIM, SIOR

770.988.6383

Principal/Managing Broker

lee@candler.com



135 Maple Street NW, Gainesville, GA 30501 | 770.988.6383 | candler.com

INDUSTRIAL IOS FOR LEASE

5662 Cemetery Rd, Lula, GA 30554



Presented By:

Lee Hemmer, CCIM, SIOR

770.988.6383

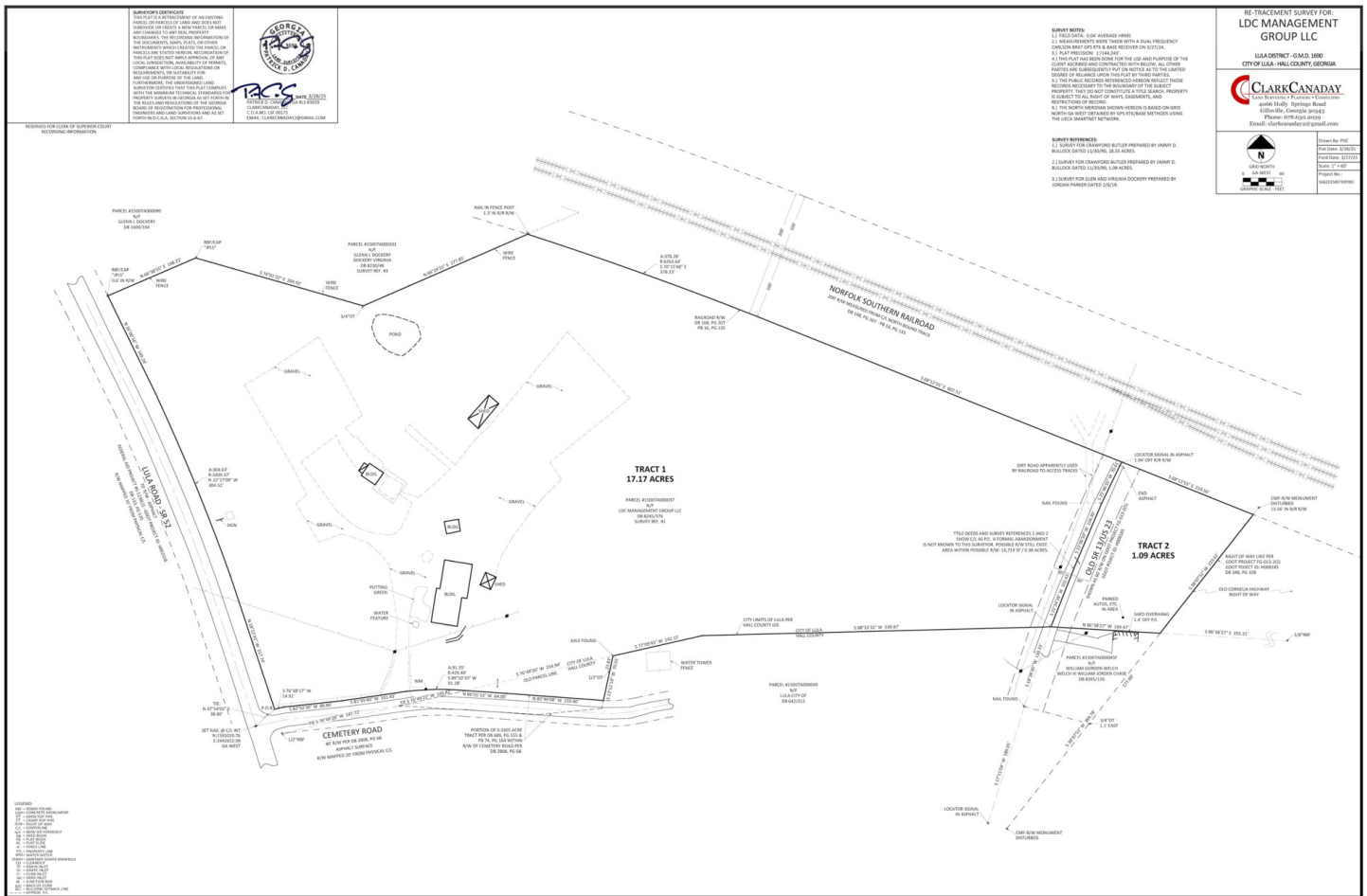
Principal/Managing Broker

lee@candler.com



135 Maple Street NW, Gainesville, GA 30501 | 770.988.6383 | candler.com

5662 Cemetery Rd, Lula, GA 30554



Presented By:

Lee Hemmer, CCIM, SIOR

770.988.6383

Principal/Managing Broker

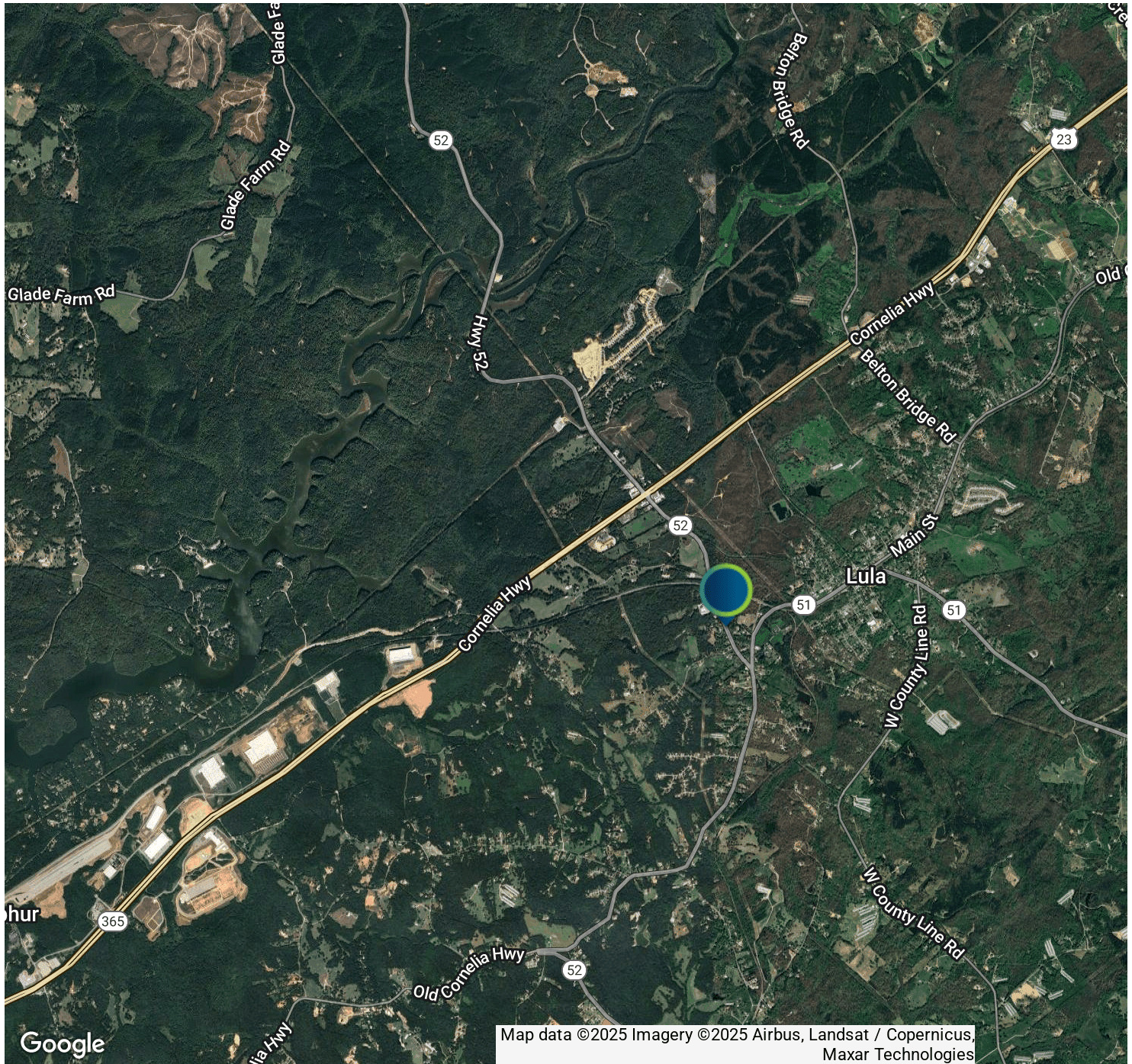
lee@candler.com



135 Maple Street NW, Gainesville, GA 30501 | 770.988.6383 | **candler.com**

INDUSTRIAL IOS FOR LEASE

5662 Cemetery Rd, Lula, GA 30554



Presented By:

Lee Hemmer, CCIM, SIOR

770.988.6383

Principal/Managing Broker

lee@candler.com



135 Maple Street NW, Gainesville, GA 30501 | 770.988.6383 | candler.com

INDUSTRIAL IOS FOR LEASE

5662 Cemetery Rd, Lula, GA 30554



Lee Hemmer, CCIM, SIOR

Principal/Managing Broker

lee@candler.com

Direct: **770.988.6383**

GA #183296

Candler Real Estate
135 Maple Street NW
Gainesville, GA 30501
770.988.6383

Presented By:

Lee Hemmer, CCIM, SIOR

770.988.6383

Principal/Managing Broker

lee@candler.com



135 Maple Street NW, Gainesville, GA 30501 | 770.988.6383 | **candler.com**