

12147 – 12163 GLOBE STREET  
LIVONIA, MICHIGAN

INDUSTRIAL FOR SALE OR LEASE

For Sale: 53,855 Square Feet

For Lease: 34,979 Square Feet



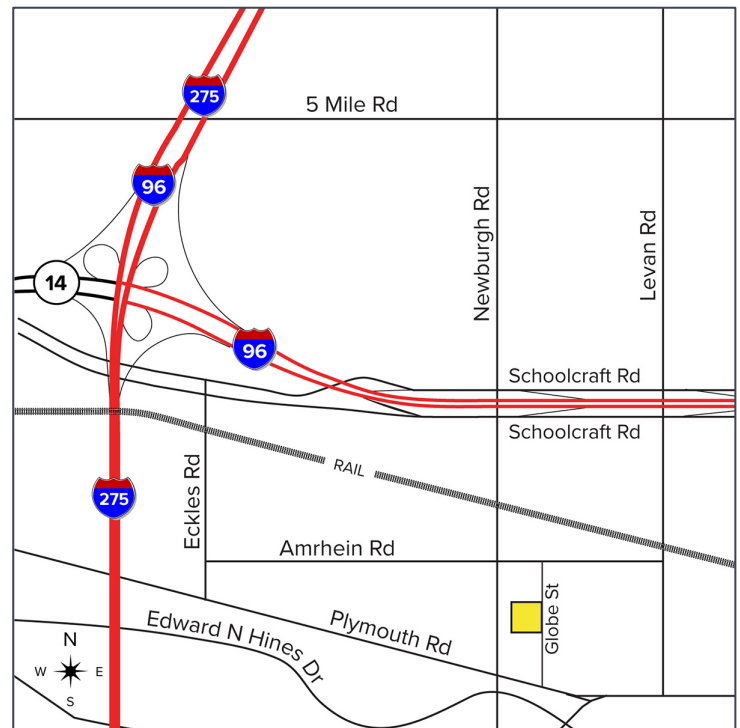
**SIGNATURE ASSOCIATES**  
KNOW SIGNATURE | KNOW RESULTS

HEAVY POWER & CRANE WAREHOUSE



PROPERTY FEATURES

- 34,979 – 53,855 square feet available
  - 34,979 square feet unit: 24,321 sq. ft. of warehouse space with 26' clear height, (2) 14' x 20' overhead doors, and 10,658 sq. ft. of renovated office space available immediately
  - 18,876 square feet unit: 20' clear height, (4) loading docks, (2) 14' x 16' overhead doors, available Q2 2026
- (1) 30-ton, (1) 15-ton, (3) 7.5-ton, (2) 5-ton cranes
- Fully air-conditioned
- Ample parking and fenced in rear lot for storage or parking included
- Lease Rate: \$6.95/sq. ft. NNN
- Sale Price: \$5,654,775 (\$105.00/sq. ft.)



For more information, please contact:

**STEVE GORDON**  
(248) 948 0101  
sgordon@signatureassociates.com

**ALEX TIMMIS**  
(248) 359 0623  
atimmis@signatureassociates.com

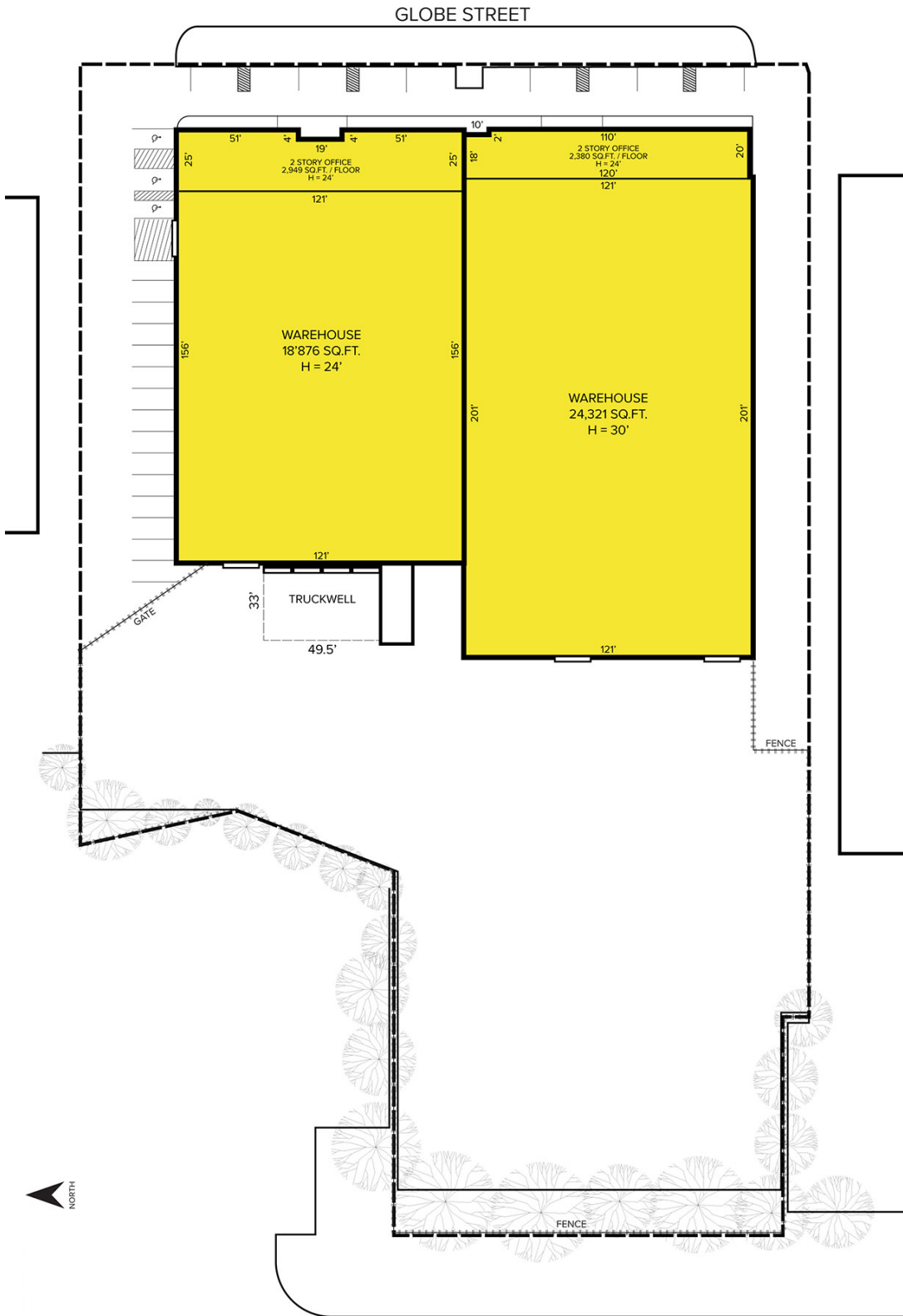
**SIGNATURE ASSOCIATES**  
One Towne Square, Suite 1200  
Southfield, MI 48076  
www.signatureassociates.com

# 12147 - 12163 Globe Street – Livonia, Michigan

Industrial For Sale or Lease

For Lease –  
34,979 SF  
For Sale –  
53,855 SF

## Site Plan



For more information, please contact:

**STEVE GORDON**  
(248) 948 0101  
sgordon@signatureassociates.com

**ALEX TIMMIS**  
(248) 359 0623  
atimmis@signatureassociates.com

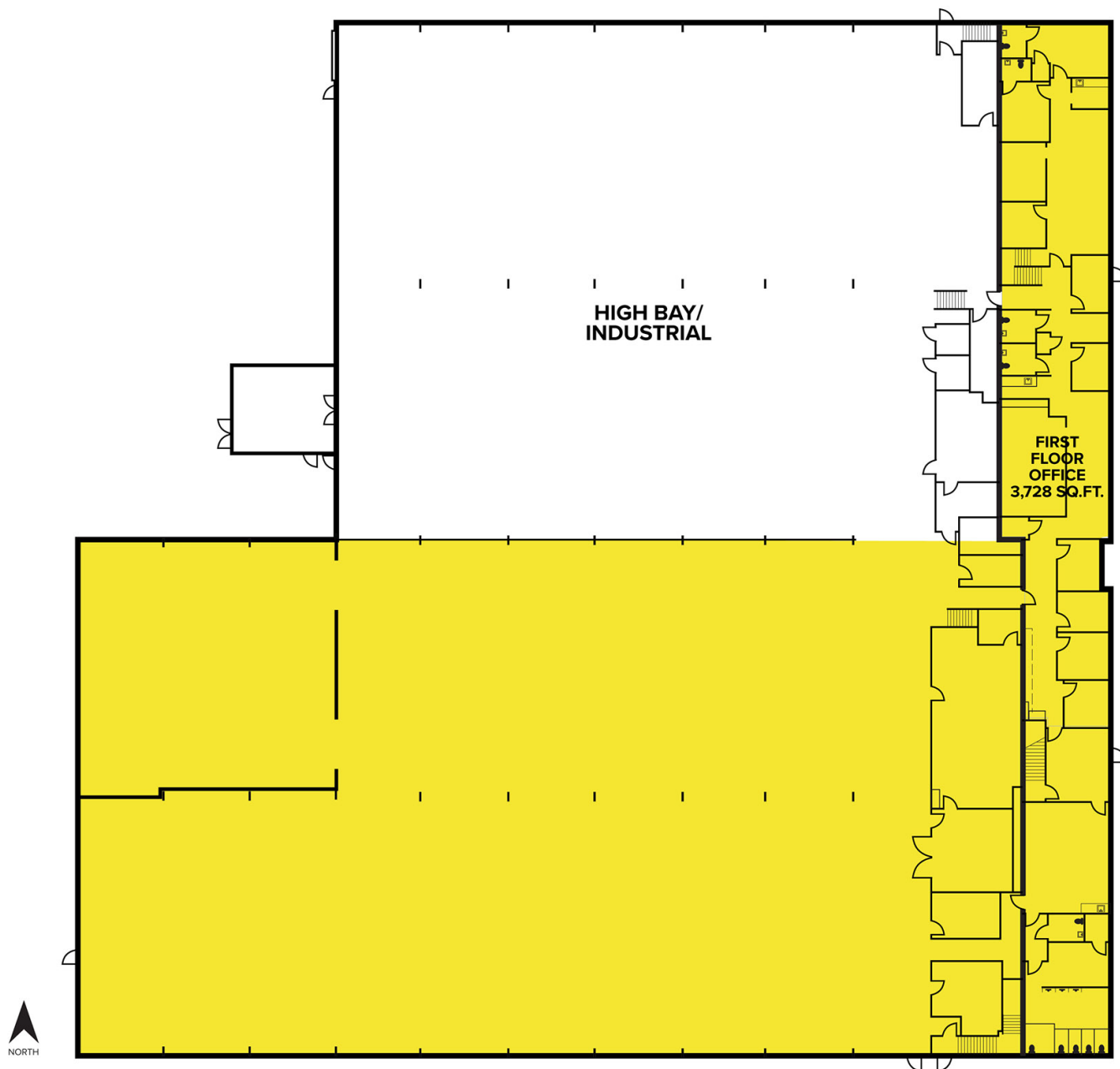
**SIGNATURE ASSOCIATES**  
One Towne Square, Suite 1200  
Southfield, MI 48076  
www.signatureassociates.com

# 12147 - 12163 Globe Street – Livonia, Michigan

Industrial For Sale or Lease

For Lease –  
34,979 SF  
For Sale –  
53,855 SF

## First Floor Plan



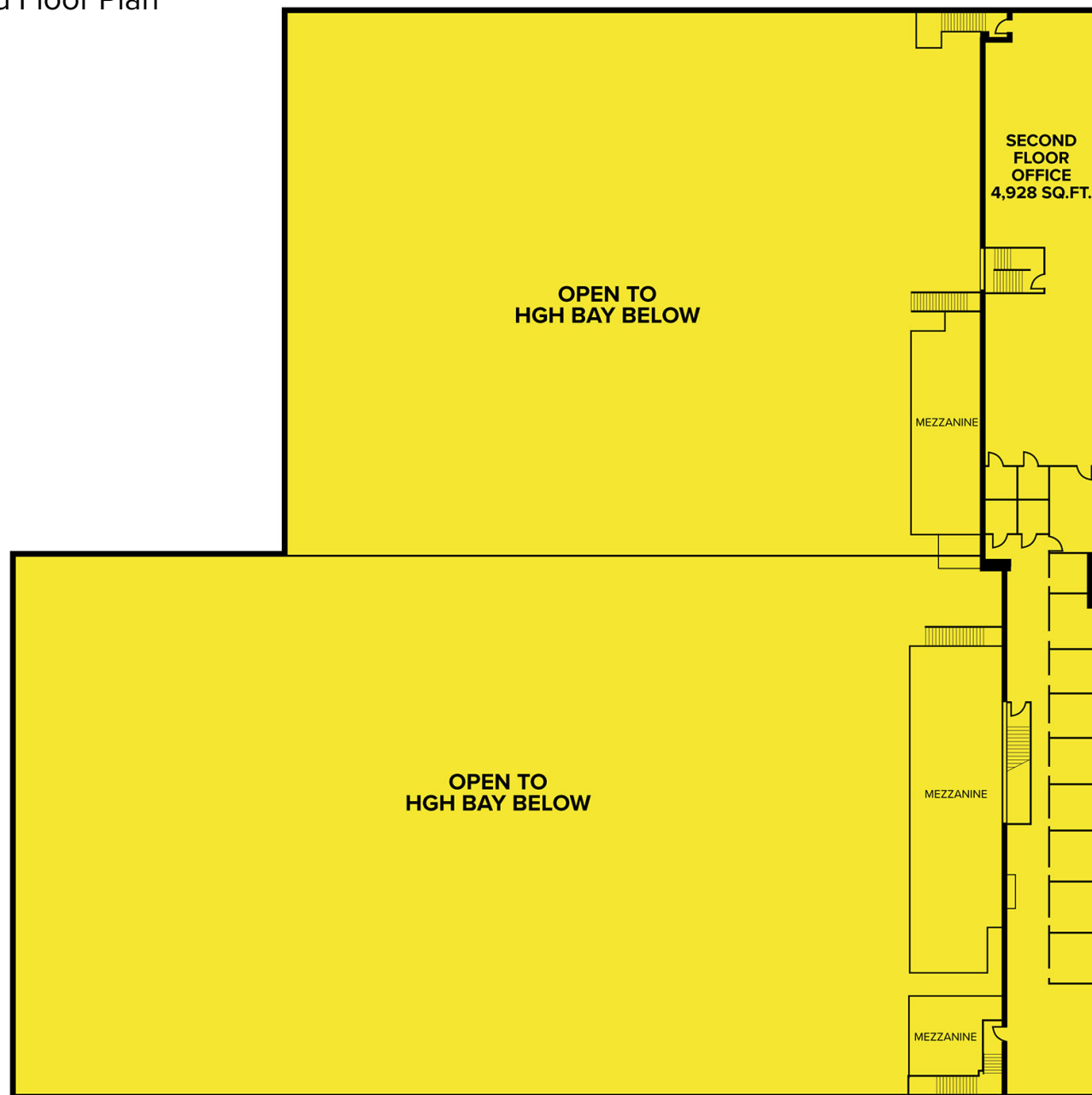
For more information, please contact:

**STEVE GORDON**  
(248) 948 0101  
sgordon@signatureassociates.com

**ALEX TIMMIS**  
(248) 359 0623  
atimmis@signatureassociates.com

**SIGNATURE ASSOCIATES**  
One Towne Square, Suite 1200  
Southfield, MI 48076  
www.signatureassociates.com

Second Floor Plan



For more information, please contact:

**STEVE GORDON**  
(248) 948 0101  
sgordon@signatureassociates.com

**ALEX TIMMIS**  
(248) 359 0623  
atimmis@signatureassociates.com

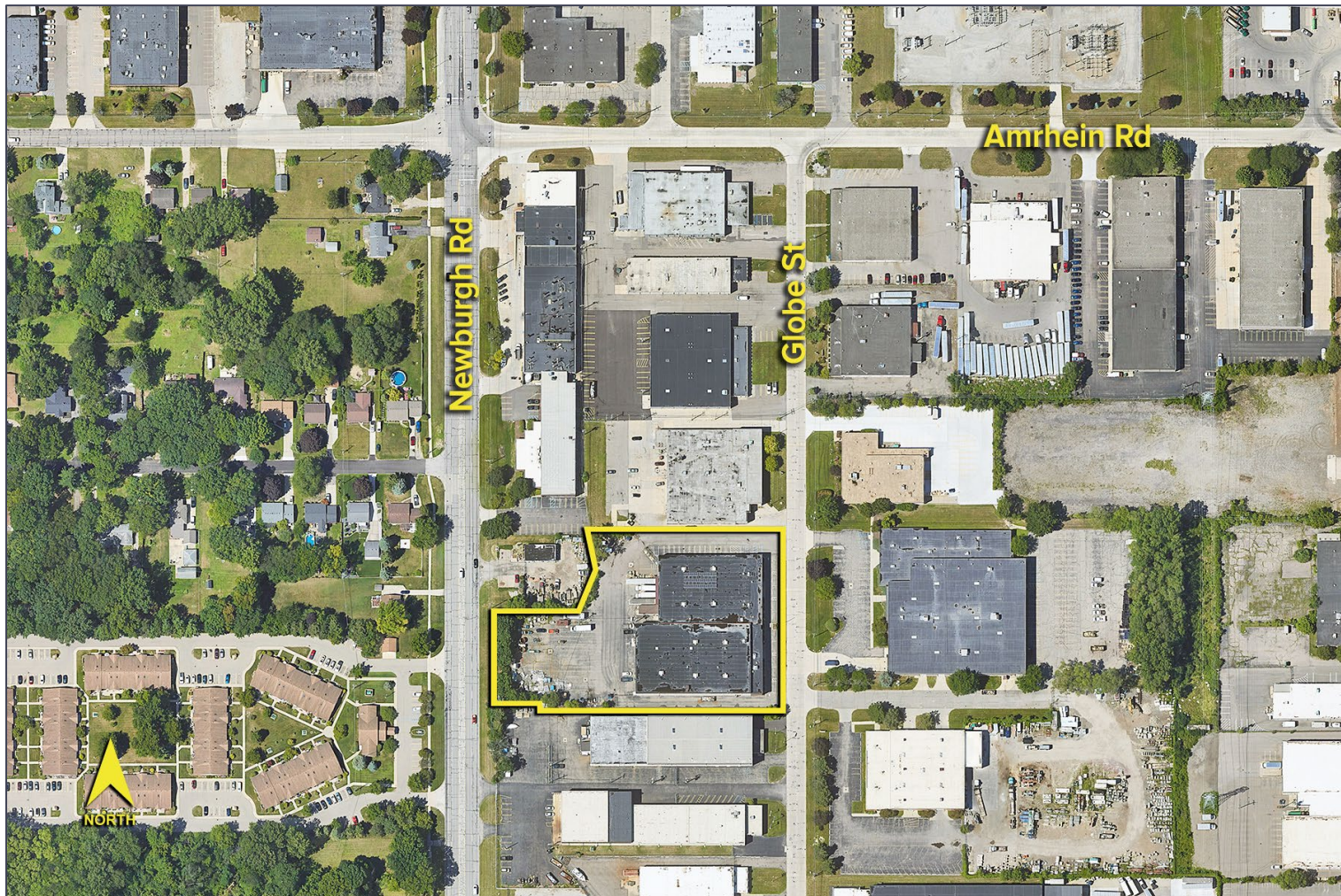
**SIGNATURE ASSOCIATES**  
One Towne Square, Suite 1200  
Southfield, MI 48076  
www.signatureassociates.com

# 12147 - 12163 Globe Street – Livonia, Michigan

Industrial For Sale or Lease

For Lease –  
34,979 SF  
For Sale –  
53,855 SF

Aerial



For more information, please contact:

**STEVE GORDON**  
(248) 948 0101  
sgordon@signatureassociates.com

**ALEX TIMMIS**  
(248) 359 0623  
atimmis@signatureassociates.com

**SIGNATURE ASSOCIATES**  
One Towne Square, Suite 1200  
Southfield, MI 48076  
www.signatureassociates.com