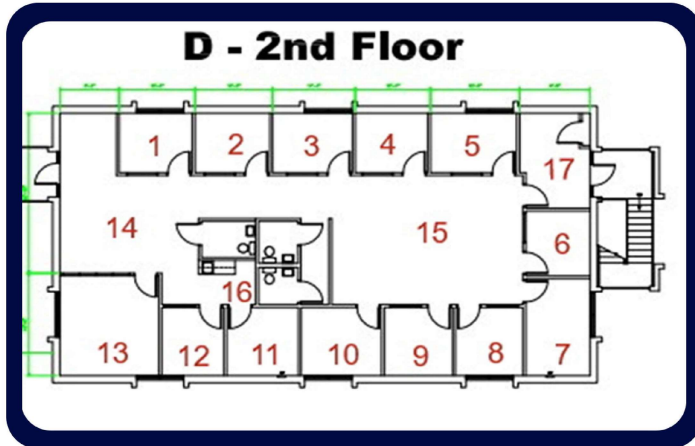


OFFICE SPACE FOR LEASE

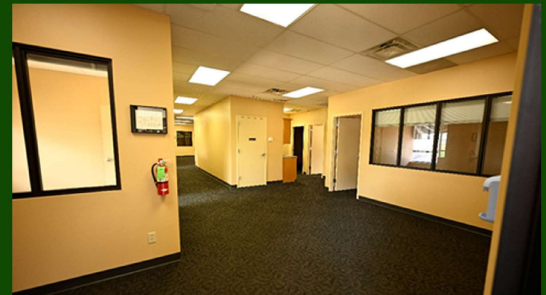
1120 SOUTH POINTE PROPERTIES



D - 2ND FLOOR

This suite is approximately 2,727 sqft. It has two entrances. One is from the back or middle parking lot, the other is from the inner courtyard with the stairs and elevator. The space is designed for multiple offices for technical people that may prefer a quiet office. Each office has a door and window toward the inside to allow the degree of privacy they prefer. Most have their own outside windows. It has private restroom and kitchenette.

BLD A AREA	APPROXIMATE SIZE	NARRATIVE
1-12	Average about 8'6 x 10'	Each has room for a personal desk and a second chair
7	8'10 x 13'9	Executive office or conference room
13	14'3 x 13'1	Reception and entry
14	13'9 x 18'9	Bay area for group meetings or desks
15	18'3 x 25'8	Entry/Exit area
17	13'7 x 8'9	Kitchenette area
16		



1120 SOUTH POINTE PROPERTIES, LLC

1120 S Pointe Parkway
Shreveport, LA 71105

Greg.teeters@outlook.com
318-573-3892