

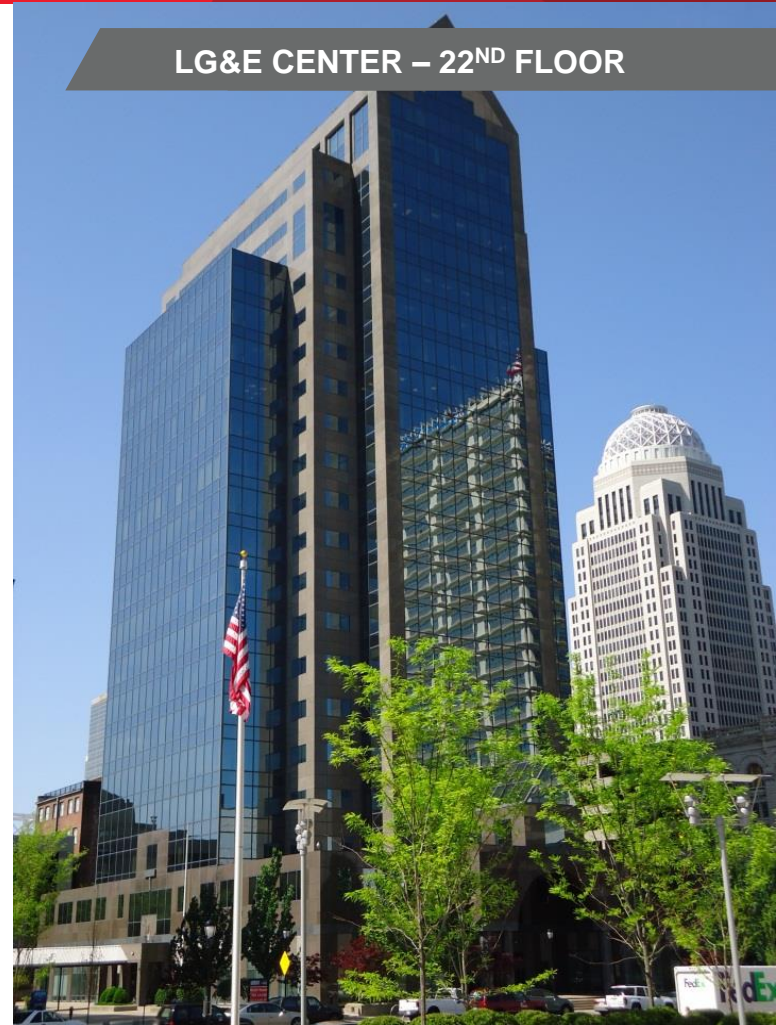
OFFICE SPACE FOR LEASE
SUITES FROM 2,240 – 3,284 SF

PROPERTY FEATURES

- 287,990 SF Class A office tower
- Full floor availability is an option
- Upscale lobby
- Convenient access to all downtown interstates
- Close proximity to convention center, KFC Yum! Center, hotels, restaurants, and shopping
- On-site amenities include:
 - Restaurant
 - ATM machine
 - Wi-Fi hotspot
 - On-site property management
 - On-site security



LG&E CENTER – 22ND FLOOR



For more information, please contact:

E.P. SCHERER
Senior Director
502 589 5150 ext. 234
epscherer@commercialkentucky.com

333 E. Main Street, Suite 510
Louisville, KY 40202
phone: +1 502 589 5150
www.CommercialKentucky.com



Aerial Map

For more information, please contact:

E.P. SCHERER
Senior Director
502 589 5150 ext. 234
epscherer@commercialkentucky.com

333 E. Main Street, Suite 510
Louisville, KY 40202
phone: +1 502 589 5150
www.CommercialKentucky.com

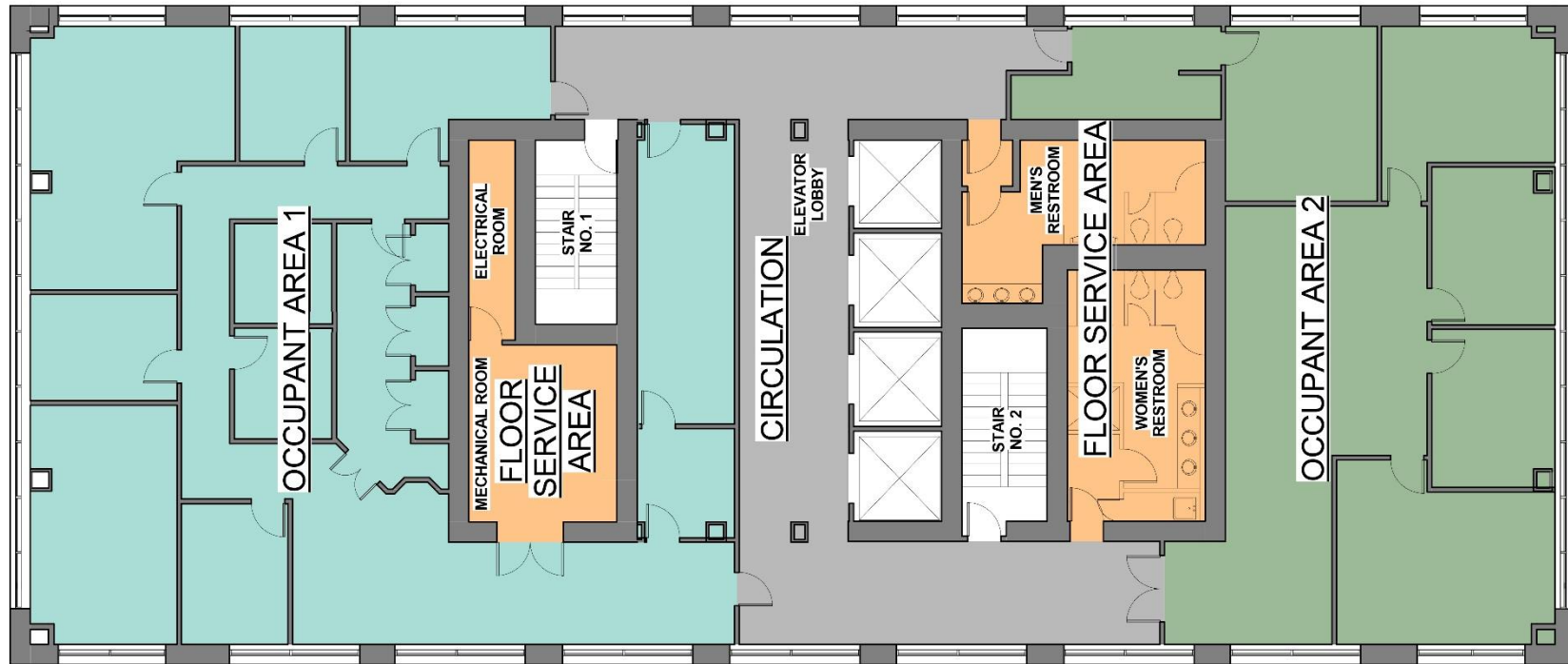


Interior Photos

For more information, please contact:

E.P. SCHERER
Senior Director
502 589 5150 ext. 234
epscherer@commercialkentucky.com

333 E. Main Street, Suite 510
Louisville, KY 40202
phone: +1 502 589 5150
www.CommercialKentucky.com



22nd Floor Plan

For more information, please contact:

E.P. SCHERER
Senior Director
502 589 5150 ext. 234
epscherer@commercialkentucky.com

333 E. Main Street, Suite 510
Louisville, KY 40202
phone: +1 502 589 5150
www.CommercialKentucky.com