

FOR LEASE



Neighboring



# RARE SOUTHERN MARIN ANCHOR OPPORTUNITY

701 E. Blithedale - Alto Center, Mill Valley

Tenant's lease expires March 2026. Low NNN



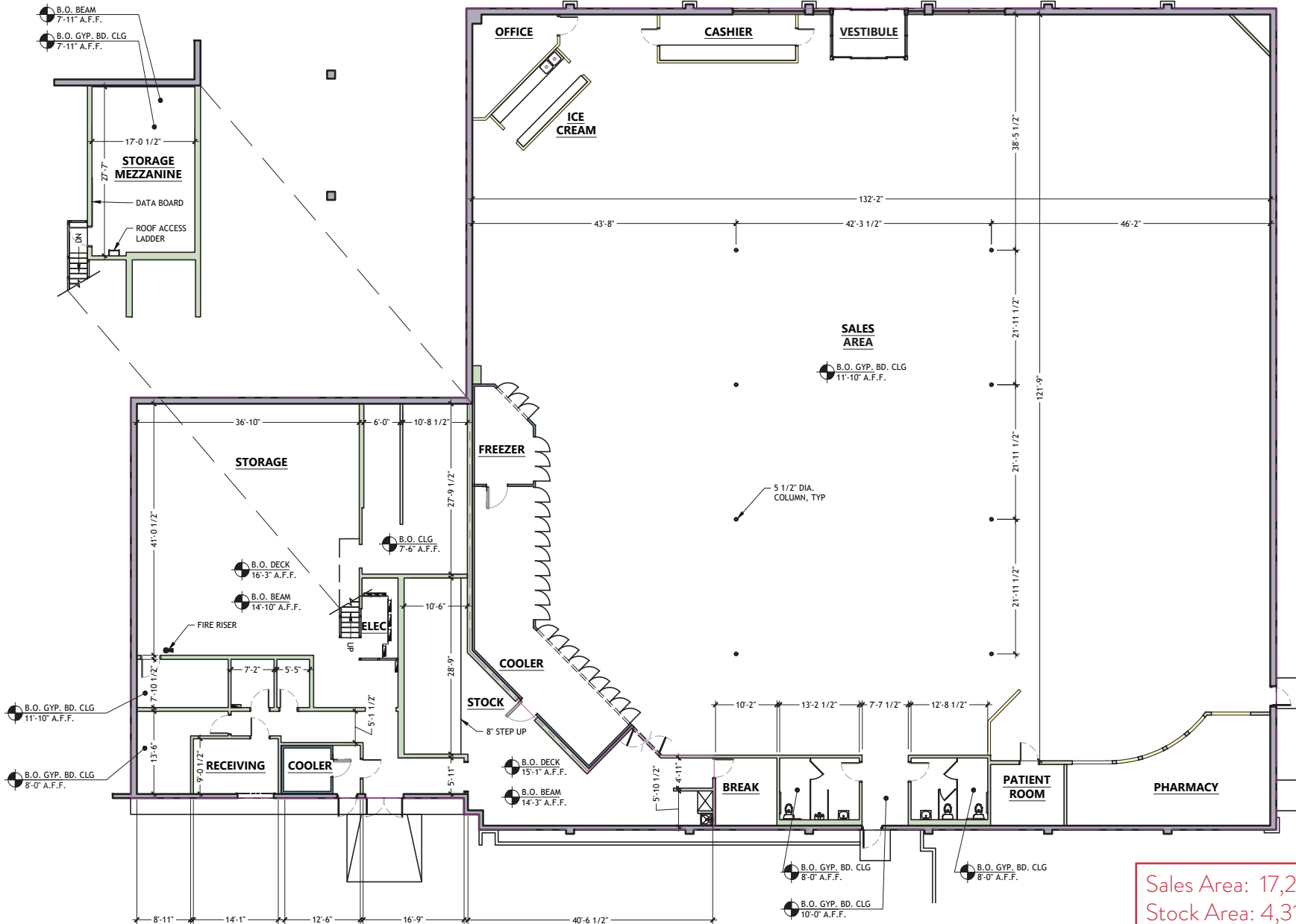
Matt Holmes | 415.729.9394 | mholmes@retailwestinc.com | dre 01117082

retailwestinc.com

# Alto Center Site Plan



# Floor Plan



Sales Area: 17,284 SF  
 Stock Area: 4,317 SF  
 Mezzanine: 463 SF  
 Total: 22,064 SF





**BevMo!** **TRADER JOE'S**

**SAFeway** **REI** **The Container Store**  
**RITE AID** **PET CLUB** **BARNES & NOBLE**

**The Village at Corte Madera**  
**SEPHORA** **POTTERY BARN** **MACY'S**  
**ANTHROPOLOGIE** **NORDSTROM**

**Alto Center**  
**WHOLE FOODS MARKET** **RITE AID** **CVS pharmacy**

**Strawberry Village**  
**west elm** **SAFeway**

**GROCERY OUTLET** **CVS pharmacy** **target** **ROSS DRESS FOR LESS**

2024 demographics

|                     | <u>1 mi</u> | <u>3 mi</u> | <u>5 mi</u> |
|---------------------|-------------|-------------|-------------|
| Est. Population     | 12,827      | 58,691      | 113,296     |
| Est. Daytime Pop.   | 7,025       | 28,804      | 67,224      |
| Est. Households     | 5,616       | 25,447      | 46,213      |
| Est. Avg HH Income  | \$287,364   | 4309,138    | \$287,139   |
| Est. Med. HH Income | \$204,764   | \$210556    | \$190,836   |



[CLICK HERE FOR ZONING INFORMATION](#)



Matt Holmes | 415.729.9394 | [mholmes@retailwestinc.com](mailto:mholmes@retailwestinc.com) | dre 01117082

[retailwestinc.com](http://retailwestinc.com)

This information has been secured from sources we believe to be reliable, but we make no representations, or warranties, express or implied, as to the accuracy of the information. Listing broker has been given enough information to provide only preliminary due diligence on the property. The materials are not to be considered fact.

The information contained herein is not a substitute for a thorough due diligence investigation. Information to be verified by an interested party, and their advisors and consultants. By receiving these materials you are agreeing to the disclaimers set forth herein. DRE# 01445169 Retail West © 2024