

SUBLEASE

362 PIERPONT AVENUE

Salt Lake City, UT



CUSHMAN &
WAKEFIELD



BEAUTIFULLY REFINISHED OFFICE SPACE

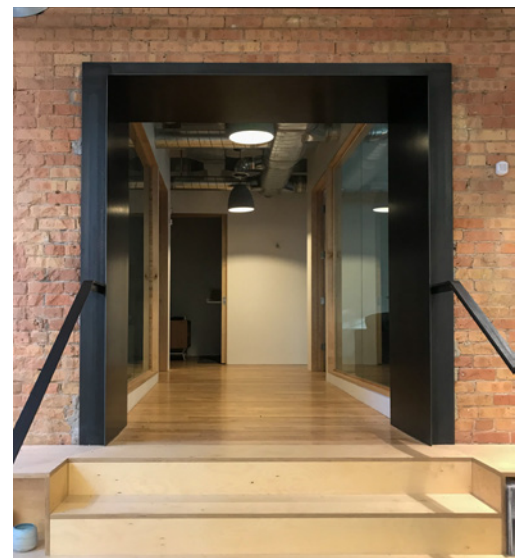
Property Highlights

- Asking Rate: \$24.50
- LED 12/31/2026
- 3,000 RSF
- Beautifully built-out space with exposed brick, ceilings, and hardwood floors
- Exclusive entrance/exit
- Walking distance to restaurants, retail, and the park

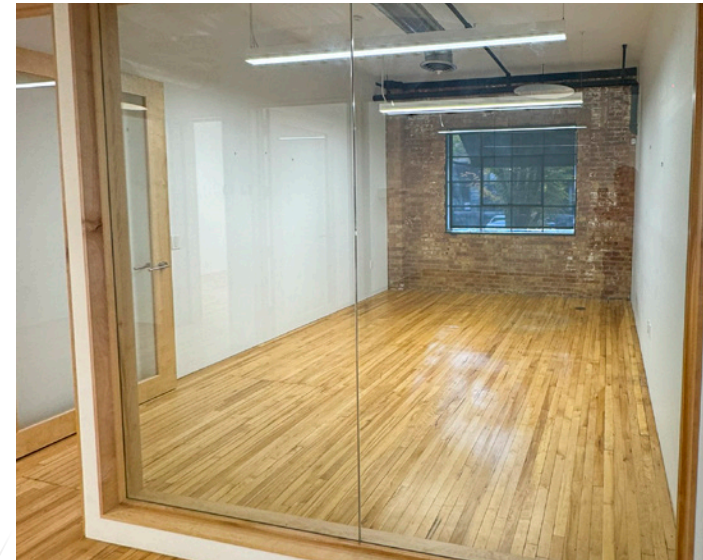
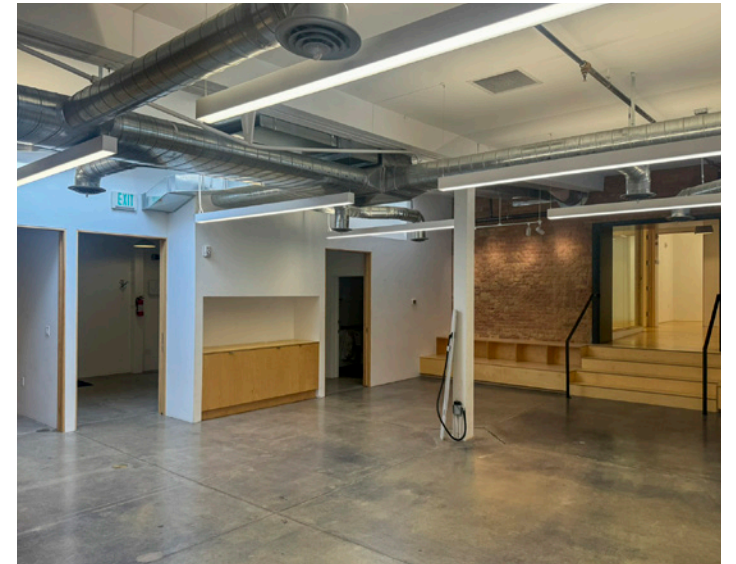
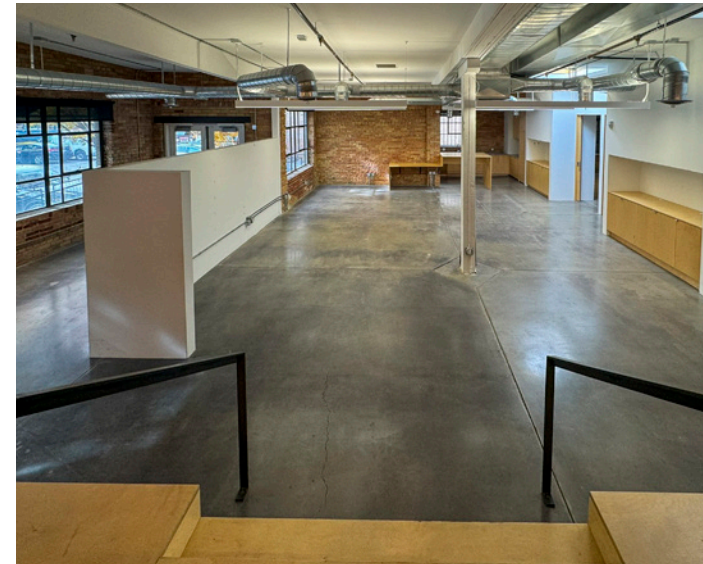
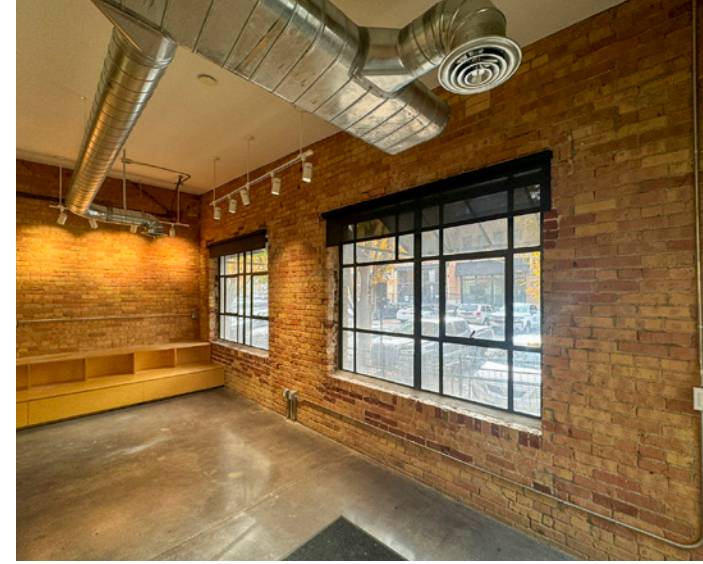
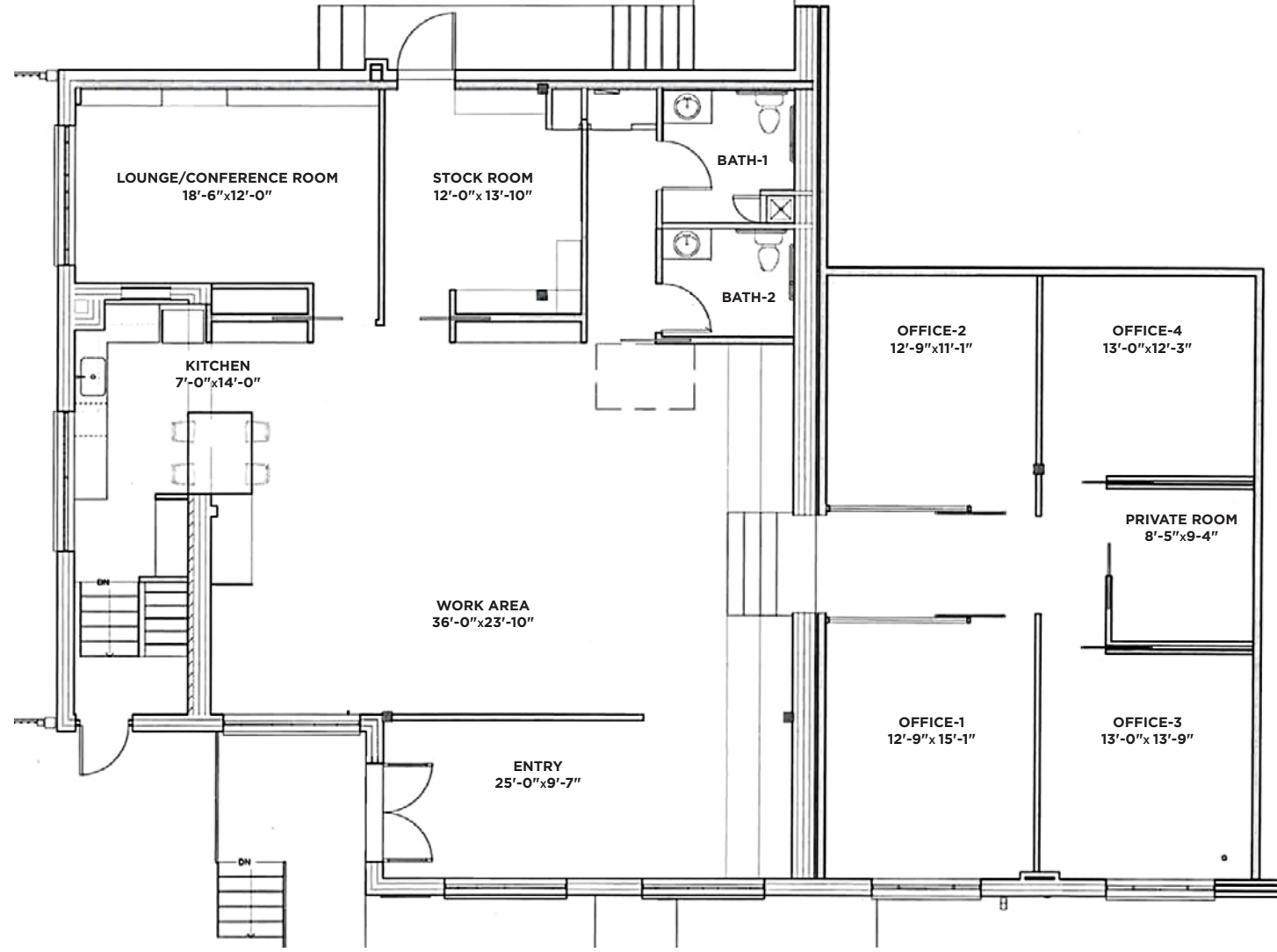
Contact

MIKE RICHMOND
Executive Managing Director
+1 801 303 5434
mike.richmond@cushwake.com

DANA BAIRD, CCIM
Executive Managing Director
+1 801 303 5526
dana.baird@cushwake.com



170 South Main Street
Salt Lake City, UT 84101
+1 801 322 2000
cushmanwakefield.com



SUBLEASE
362 PIERPONT AVENUE
Salt Lake City, UT



LOCATION AERIAL



Contact

MIKE RICHMOND
Executive Managing Director
+1 801 303 5434
mike.richmond@cushwake.com

DANA BAIRD, CCIM
Executive Managing Director
+1 801 303 5526
dana.baird@cushwake.com

170 South Main Street
Salt Lake City, UT 84101
+1 801 322 2000
cushmanwakefield.com

Cushman & Wakefield Copyright 2022. No warranty or representation, express or implied, is made to the accuracy or completeness of the information contained herein, and same is submitted subject to errors, omissions, change of price, rental or other conditions, withdrawal without notice, and to any special listing conditions imposed by the property owner(s). As applicable, we make no representation as to the condition of the property (or properties) in question. (G:\UT\SLI\Shared\Apps\Gigas\1 - Projects\Richmond, Mike\1 - Flyers\362PierpontAvenue)