



Available For Lease

\$25K BROKER BONUS FOR 5 YR TERM



±15,365 SF AVAILABLE FOR LEASE

6711 Odessa Avenue | Van Nuys, CA

WAREHOUSE DISTRIBUTION

PREMIERE CENTRAL VALLEY LOCATION | EXCEPTIONAL INDUSTRIAL OPPORTUNITY



**Rexford
Industrial**

PEAK
COMMERCIAL

FEATURES

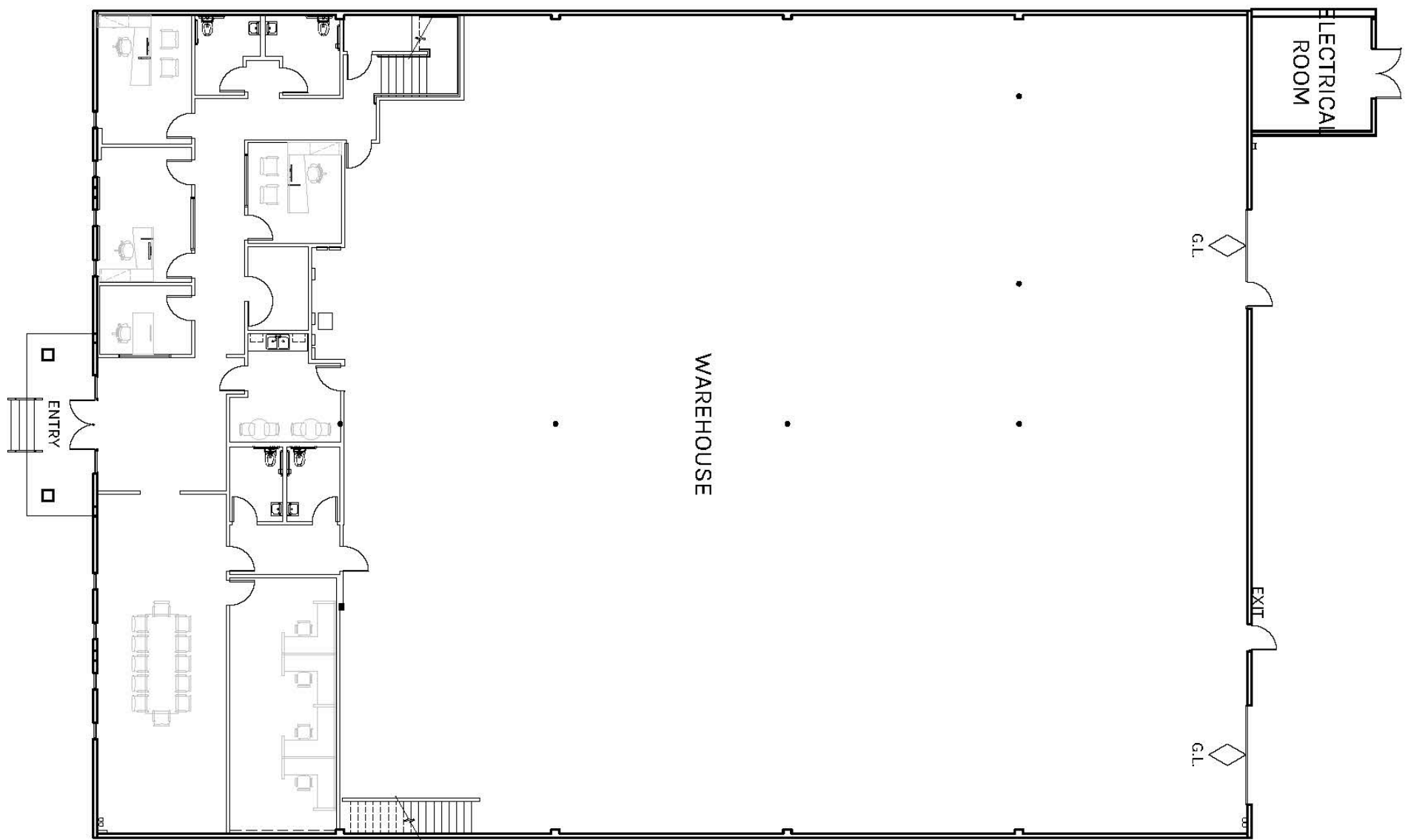
- ±15,365 SF industrial building
- ±3,880 SF office
- ±18' minimum clear height
- 2 ground level doors
- Renovations Underway
- **Lease Rate: \$1.69/SF NNN**
- NNN: \$0.26/SF
- Parking: 36 spaces
- Premiere Central Valley Location
- Power: 600-amp, 3 phase, 120v/240v
- Perfect for assembly, light manufacturing, distribution or service center
- Institutionally owned & managed W/ flexibility to expand
- **\$25K Broker Bonus Thru 3/31/26 on a 5 Yr Term**



Exterior Photos

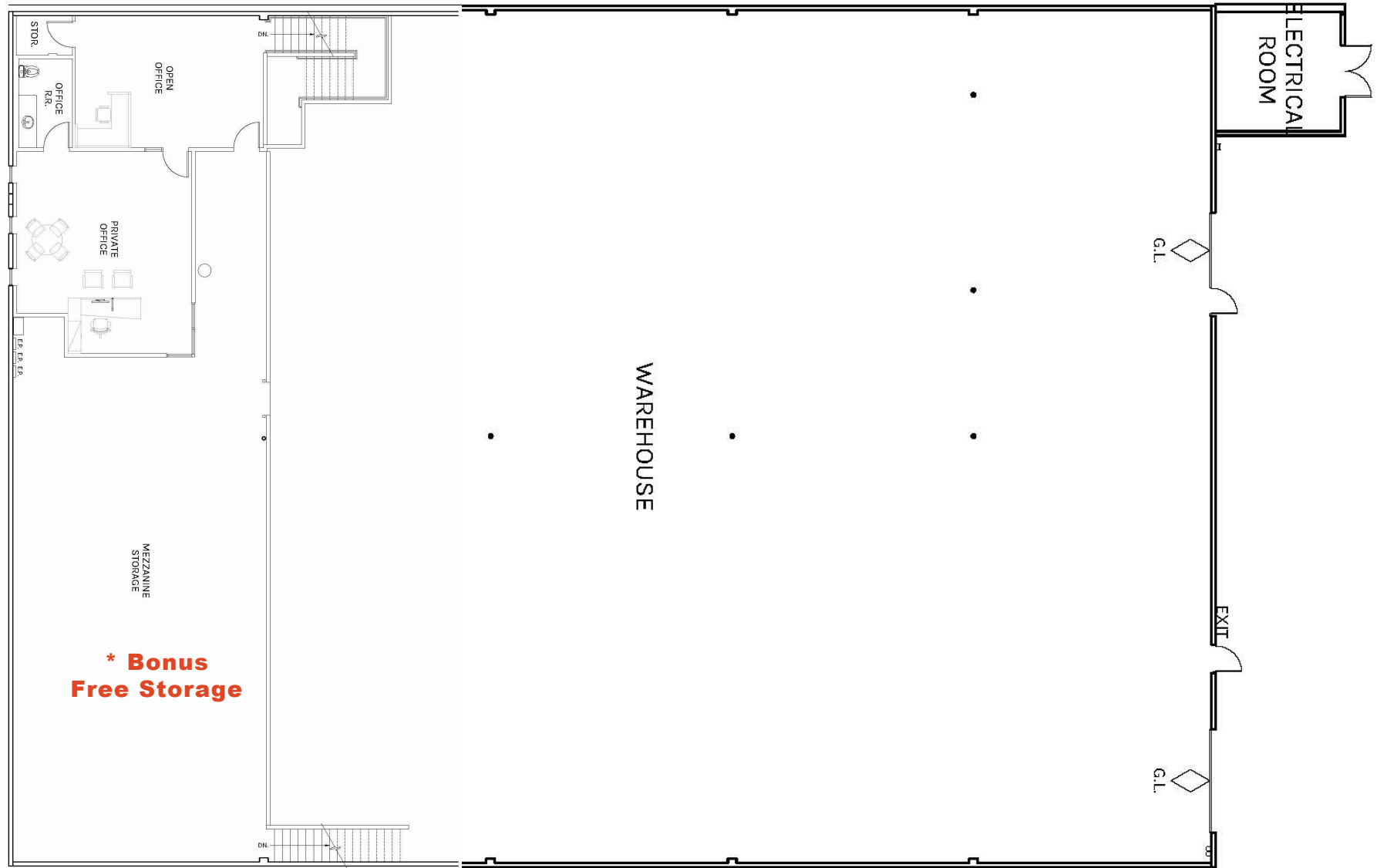
6711 Odessa Avenue





First Floor

PLAN LAYOUT SUBJECT TO FIELD CONDITIONS AND MAY DIFFER FROM PLAN AS SHOWN. ALL INFORMATION PRESENTED ON THIS DRAWING IS PRESUMED TO BE ACCURATE, HOWEVER TENANT SHOULD VERIFY PERTINENT INFORMATION PRIOR TO COMMITTING TO A LEASE. ANY FURNITURE OR APPLIANCES SHOWN ON PLAN ARE FOR CONCEPT ONLY AND WILL BE TENANT PROVIDED.

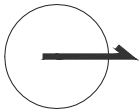


Second Floor Mezzanine



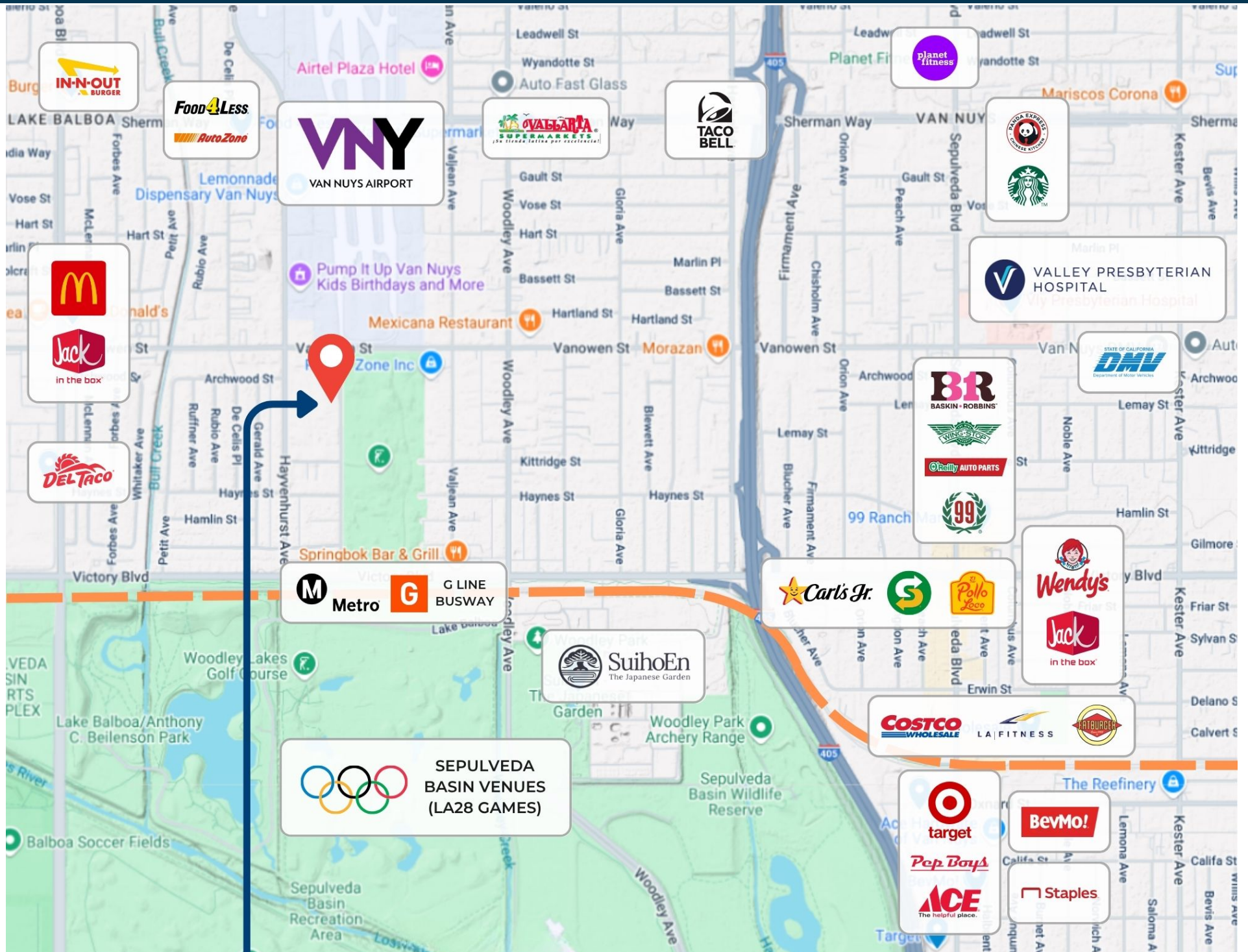
PLAN LAYOUT SUBJECT TO FIELD
CONDITIONS AND MAY DIFFER FROM
PLAN AS SHOWN. ALL INFORMATION
PRESENTED ON THIS DRAWING IS
PRESUMED TO BE ACCURATE, HOWEVER
TENANT SHOULD VERIFY PERTINENT
INFORMATION PRIOR TO COMMITTING
TO A LEASE.

NOT TO SCALE



Amenities Map

6711 Odessa Avenue





**Rexford
Industrial**

Leasing Contacts



RON FEDER
Senior Managing Director
O: 818.222.0404
rfeder@rjfeder.com
DRE# 00983855



BROOKE FEDER-KENRICK
Commercial Associate
C: 818.451.3636
bkenrick@rjfeder.com
DRE# 02199320



FEDER & ASSOCIATES
COMMERCIAL REAL ESTATE

PEAK COMMERCIAL

PEAK COMMERCIAL
www.peakcommercial.com