



AVAILABLE

**4 EAST STOW ROAD**  
MARLTON, NJ

AVAILABLE FOR LEASE  
**INDUSTRIAL PROPERTY**

26,719 SF  
Unit 8



## PROPERTY HIGHLIGHTS

- **AVAILABLE SPACE:**  
26,719 SF (Unit 8)
- **OFFICE SPACE:**  
Approximately 2,600 SF
- **LOADING:**  
Eight (8) tailgate loading docks  
One (1) ramped 10'x14' drive-in door
- **CEILING HEIGHTS:**  
Approx. 22' clear ceilings
- **HEAT:**  
Gas-fired space heaters
- **FIRE PROTECTION:**  
100% wet sprinkler system
- **LIGHTING:**  
LED Lighting
- **BUILDING POWER (TOTAL):**  
2,000 Amp, 277/480 volt 3-phase, 4 wire
- **ZONING:**  
IP - Industrial Park (Evesham Township)
- **LOCATION:**  
Superbly located in the Evesham Corporate Center, with easy access to I-295 and the NJ Turnpike (Exit 4), as well as Public Transportation: NJ Transit Bus Route 406 (stops adjacent to property)



## ADDITIONAL PHOTO

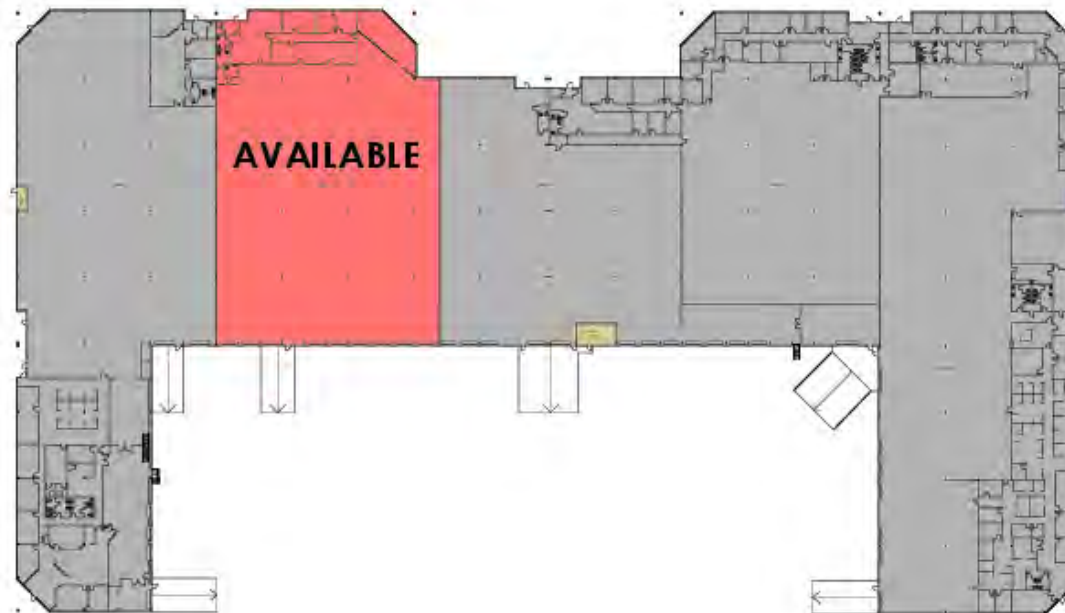


## FLOOR PLAN – UNIT 4

4 E Stow Rd, Marlton, NJ 08053

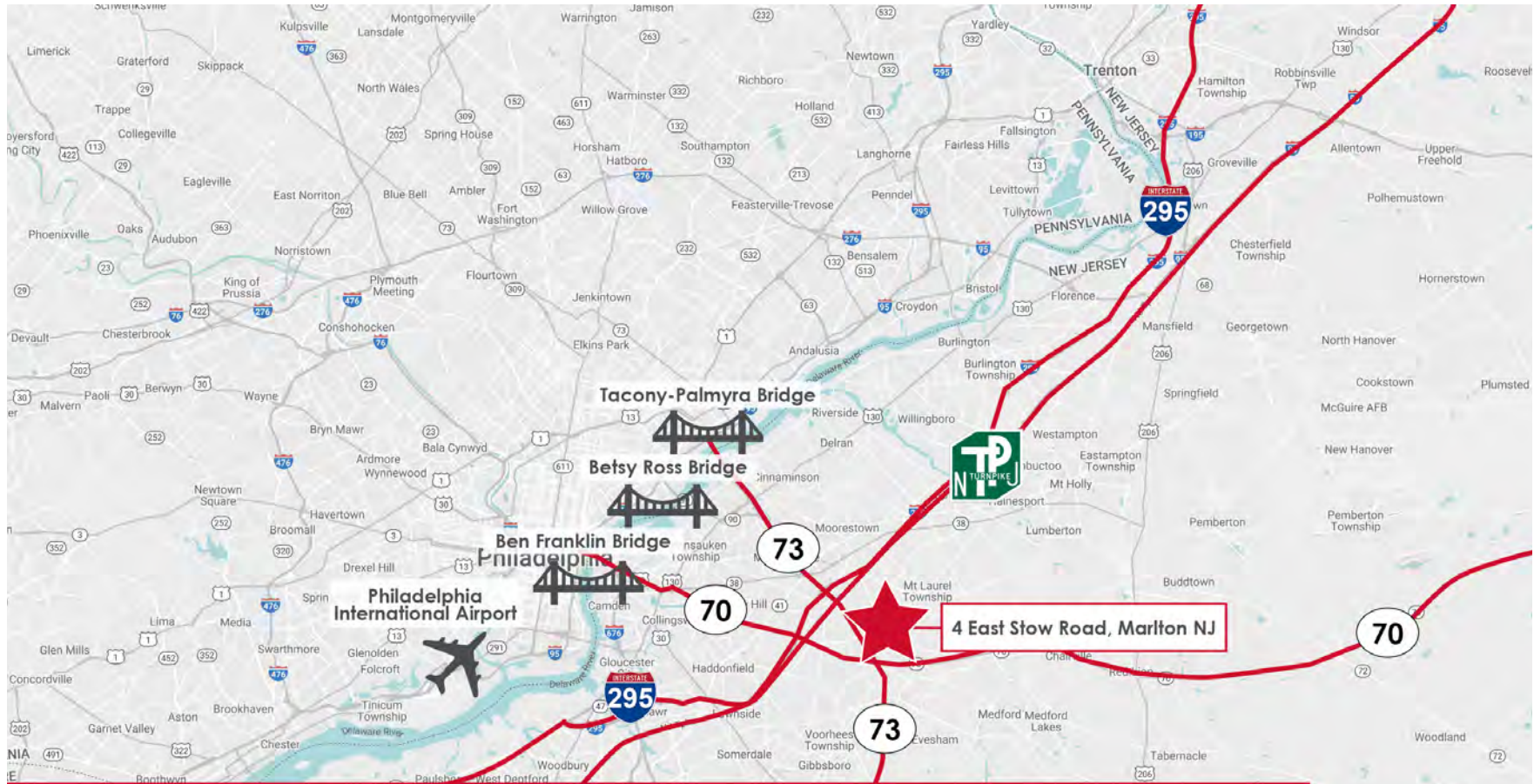
Floor 01

9/28/2023





# MAP



## DRIVE TIMES:

<b>0.6 MILES</b>	<b>2.5 MILES</b>	<b>10 MILES</b>	<b>21.6 MILES</b>	<b>37.7 MILES</b>	<b>84.1 MILES</b>
Route 73	I-295/NJ Turnpike	Betsy Ross Bridge Philadelphia	Philadelphia International Airport	Delaware Memorial Bridge	New York City

# CONTACT



**Michael Torsiello, SIOR**

Senior Vice President

**215.448.6210**

[mtorsiello@binswanger.com](mailto:mtorsiello@binswanger.com)



**Christopher Pennington**

Partner & Senior Vice President

**215.448.6053**

[cpennington@binswanger.com](mailto:cpennington@binswanger.com)



Three Logan Square  
1717 Arch Street, Suite 5100  
Philadelphia, PA 19103  
Phone: 215.448.6000  
[binswanger.com](http://binswanger.com)

The information contained herein is from sources deemed reliable, but no warranty or representation is made as to the accuracy thereof and no liability may be imposed.