

FOR LEASE

Full Floor Opportunity

Corporate HQ

7,761 SF

Move-In Ready

Office Space

Offered at \$22.00 SF

Full Service



ONEIL
COMMERCIAL
ADVISORS

STRATEGIC REAL ESTATE SOLUTIONS

Contact

Doug O'Donnell

Managing Director

C: (772) 530-9959

DOdonnell@OCAteam.com

1255 Cleveland St
Clearwater, FL 33755

Functional and MOVE-IN READY

Office Space FOR LEASE



Plug and Play

Fully built out with everything you need to run a successful business:

- Low Height Work Stations and Furniture Available
- Glassed Wall Private Offices Surrounding Open Workspace
- Conference Room
- Large Break Room



Tenant Experience

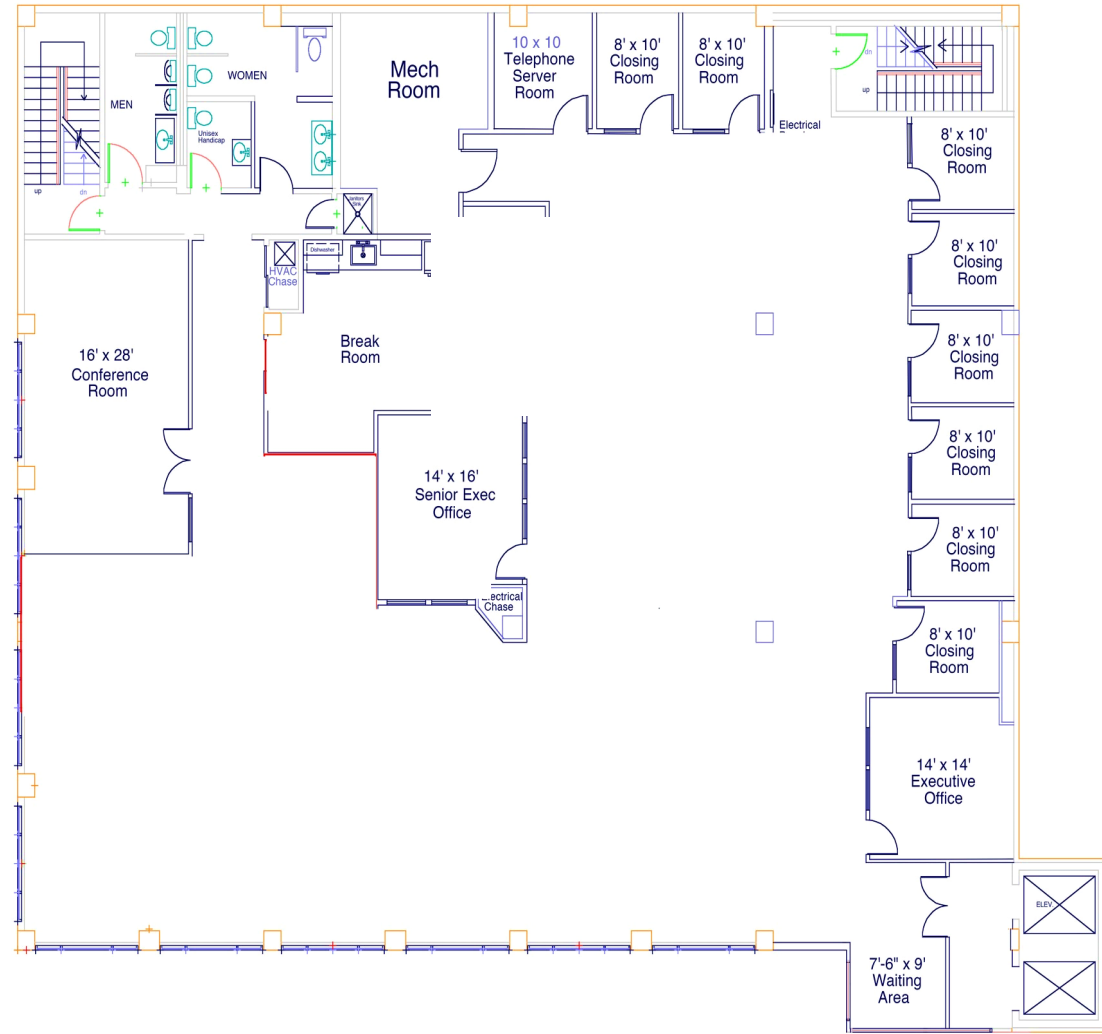
- High-End Lobby Finishes
- Private Entrance off Elevator Lobby
- 1st Floor Security Station
- Lots of Shaded Natural Light w/o the glare!
- Great Views
- High Visibility Location
- Easy Ingress and Egress
- On Multiple PSTA Bus Lines and walkable from over 3,000 apartment units within 1-mile.



Building Amenities

- Ample Parking! Including Overflow Parking
- Easy Access to and from Tampa Int'l Airport, St Pete-Clearwater Int'l Airport
- Ideally positioned within the vibrant Cleveland Street District with access to several retail shops, entertainment venues and a selection of restaurants.
- Brand new infrastructure with multiple pedestrian 6' side walks along Cleveland Street.

Floor Plan



Third Floor: 7,761 SF



Demographics

1-mile

15,693

Population



7,067

Households



41.3

Median Age

\$35,157

Median Disposable Income

3-mile

101,448

Population



44,241

Households



46.7

Median Age

\$49,608

Median Disposable Income

5-mile

232,256

Population



109,739

Households



51.3

Median Age

\$49,686

Median Disposable Income

Location

Cleveland Street District is a vibrant and creative neighborhood in Clearwater, FL. It is centrally located and is in close proximity to Tampa International Airport, St. Pete-Clearwater International Airport, and it's just a short drive from Clearwater Beach. Nearby State Road 60, the Bayside Bridge, US 19 and Alt. 19 make commuting a breeze!



For more information or
to request a tour, please contact:

Doug O'Donnell
Managing Director

C: (772) 530-9959

DOdonnell@OCAteam.com

Cheri M. O'Neil
Principal

C: (813) 787-5669

COneil@OCAteam.com



**ONEIL
COMMERCIAL
ADVISORS**

STRATEGIC REAL ESTATE SOLUTIONS

**1255 Cleveland St
Clearwater, FL 33755**

Functional and MOVE-IN READY
Office Space FOR LEASE

All information contained herein has been obtained from the owners and/or other sources deemed reliable, but we make no representations or warranties, expressed or implied, as to its accuracy. Information is submitted with the possibility of errors, omissions, change of price, rate, conditions or withdrawal without notice. References to measurements are approximate. All parties to a real estate transaction should seek legal and tax advice prior to commitment. Buyer/Tenant must verify the information and bears all risk for any inaccuracies.