



8955 KATY FWY

OFFICE SPACE

8955 KATY FREEWAY
HOUSTON, TX 77024



ANNIE TARWATER

713.668.2369

atarwater@mcmmanagement.com

DAN MEYER

713.668.2369

danmeyer@mcmmanagement.com

LOCATION

8955 KATY FREEWAY
HOUSTON, TX 77024



LOCATION HIGHLIGHTS

- SITUATED NEAR THE HEDWIG VILLAGE, SPRING BRANCH AND SPRING VALLEY NEIGHBORHOODS.
- EXCELLENT VISIBILITY TO I-10, LOCATED ON THE SOUTH SIDE OF THE I-10 CORRIDOR, EAST OF CAMPBELL ROAD.
- ADJACENT TO GOODE CO CANTINA, BAR BLUDORN, SALTGRASS STEAKHOUSE, GOODE CO. BBQ, LATULI, STARBUCKS & FEDERAL AMERICAN GRILL.

ANNIE TARWATER

713.668.2369
atarwater@mcmangement.com

DAN MEYER

713.668.2369
danmeyer@mcmangement.com

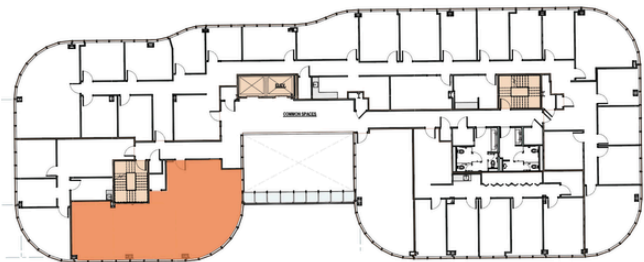


8955 KATY FREEWAY

SUITE 207
1,402 SF

Property Features and Layout

- Card access security system
- Large open workspace
- Ample natural light
- Covered, reserved parking available



ANNIE TARWATER

713.668.2369

atarwater@mcmanagement.com

DAN MEYER

713.668.2369

danmeyer@mcmanagement.com

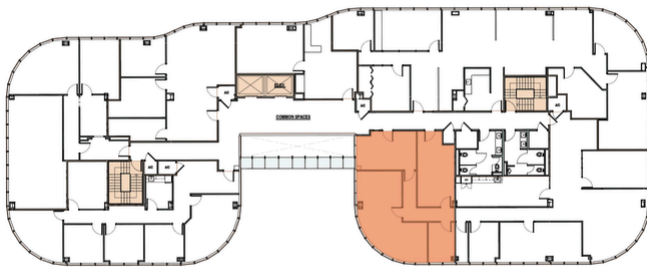
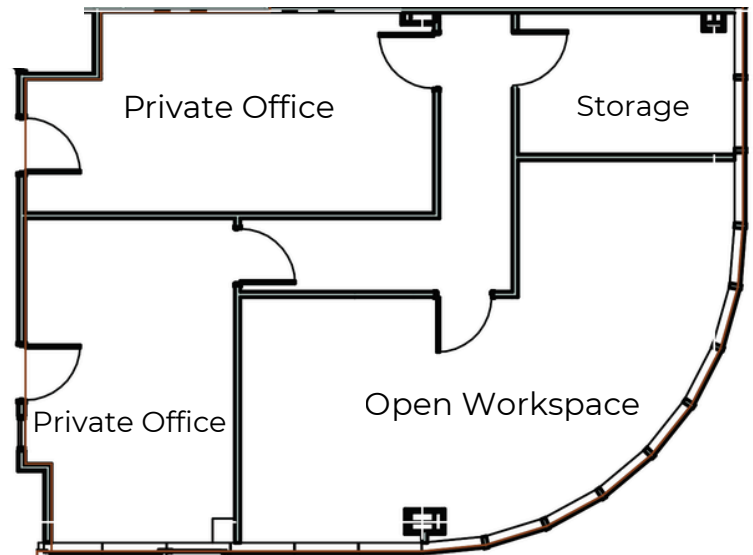


8955 KATY FREEWAY

SUITE 306
1,278 SF

Property Features and Layout

- Card access security system
- Private office plus open workspace
- Ample natural light
- Covered, reserved parking available



ANNIE TARWATER

713.668.2369

atarwater@mcmanagement.com

DAN MEYER

713.668.2369

danmeyer@mcmanagement.com

8955 KATY FWY.,
HOUSTON, TX 77096

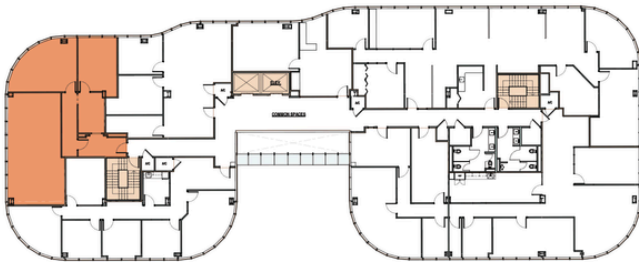
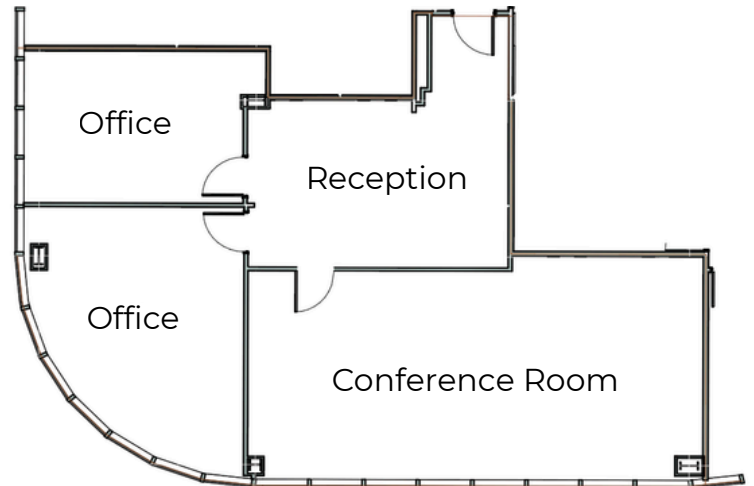


8955 KATY FREEWAY

SUITE 310
1,663 SF

Property Features and Layout

- Card access security system
- Private office plus open workspace
- Ample natural light
- Covered, reserved parking available



ANNIE TARWATER

713.668.2369

atarwater@mcmanagement.com

DAN MEYER

713.668.2369

danmeyer@mcmanagement.com