



John B. Sanford Real Estate

5.74 Acres—Dacy Ln at Kyle Parkway

1600 Dacy Ln, Kyle, TX 78640

Price: \$13/sq ft

Size: 5.74 Acres

Location: 1600 Dacy Ln, near Seton-Kyle Hospital

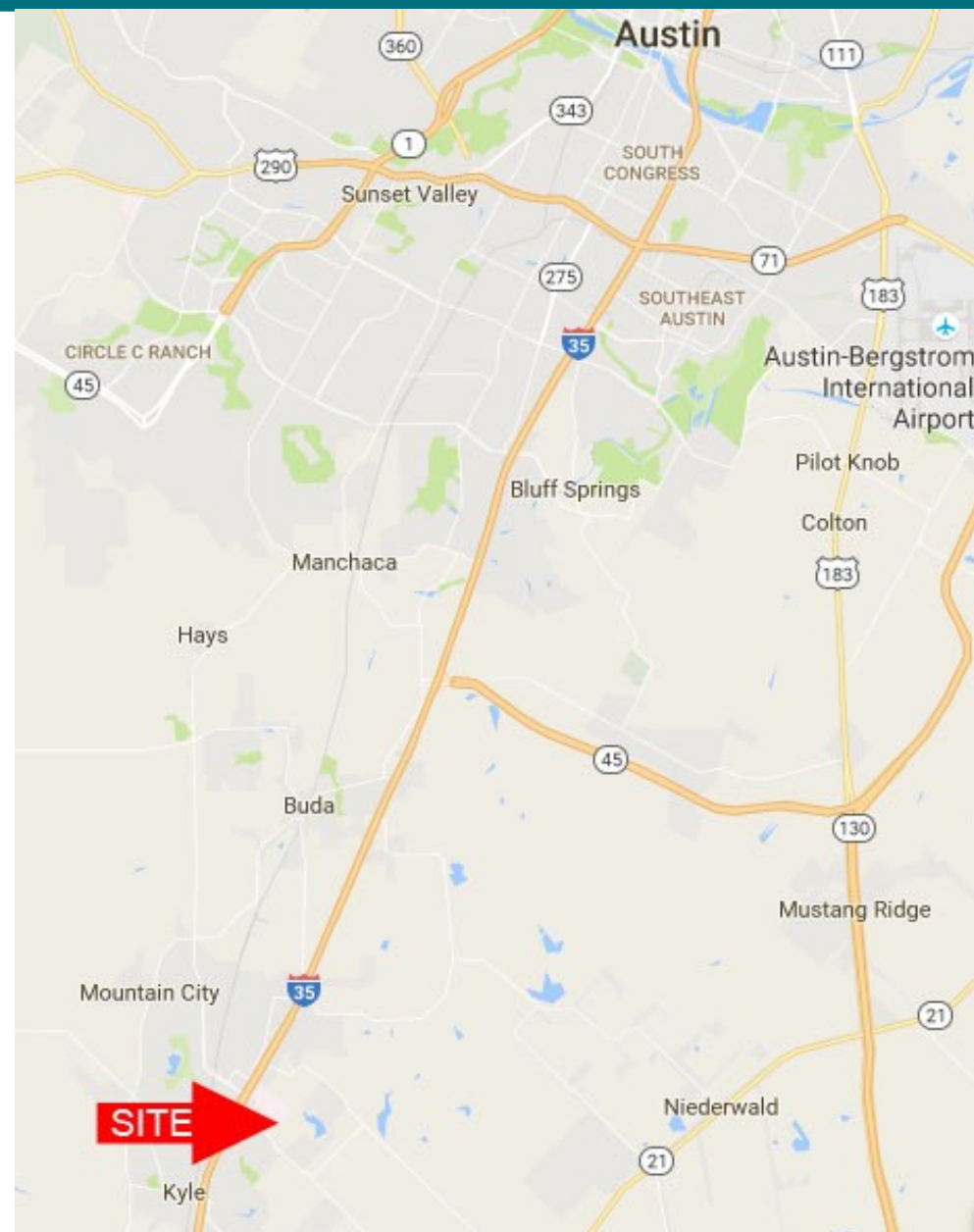
Utilities: Water: City of Kyle

Sewer: City of Kyle

Electricity: PEC on Site

Jurisdiction: City of Kyle

Notes: Rapidly developing area perfectly located for retail, office, medical, or mixed use development. Adjacent sites also available. Subdivision negotiable. Kyle Parkway to the South of this site will be extended, further opening up this area for development. Kyle Parkway funding secured with 2022 Kyle Road Bond. Located near Seton Hays, a 165-Bed Hospital and future St. David's 550-Bed Hospital. Near ACC Hays 4,000 Student Campus.



J.D. Sanford

512-924-1459

JDsanfordreal@gmail.com

www.johnbsanford.com

John B. Sanford

512-922-5633

Johnbsanford@gmail.com

The information contained herein is from sources deemed reliable, however John B. Sanford, his employees and his agents have not made an independent confirmation of the information and no warranty or guarantee of accuracy is made. A prospective tenant or buyer should confirm any important information with the assistance of an engineer and/or attorney during a feasibility period prior to closing the sale or leasing the property.



John B. Sanford Real Estate

5.74 Acres—Dacy Ln at Kyle Parkway

1600 Dacy Ln, Kyle, TX 78640



Road Work
Projected
completion
2027

J.D. Sanford

512-924-1459

JDsanfordreal@gmail.com

www.johnbsanford.com

John B. Sanford

512-922-5633

Johnbsanford@gmail.com

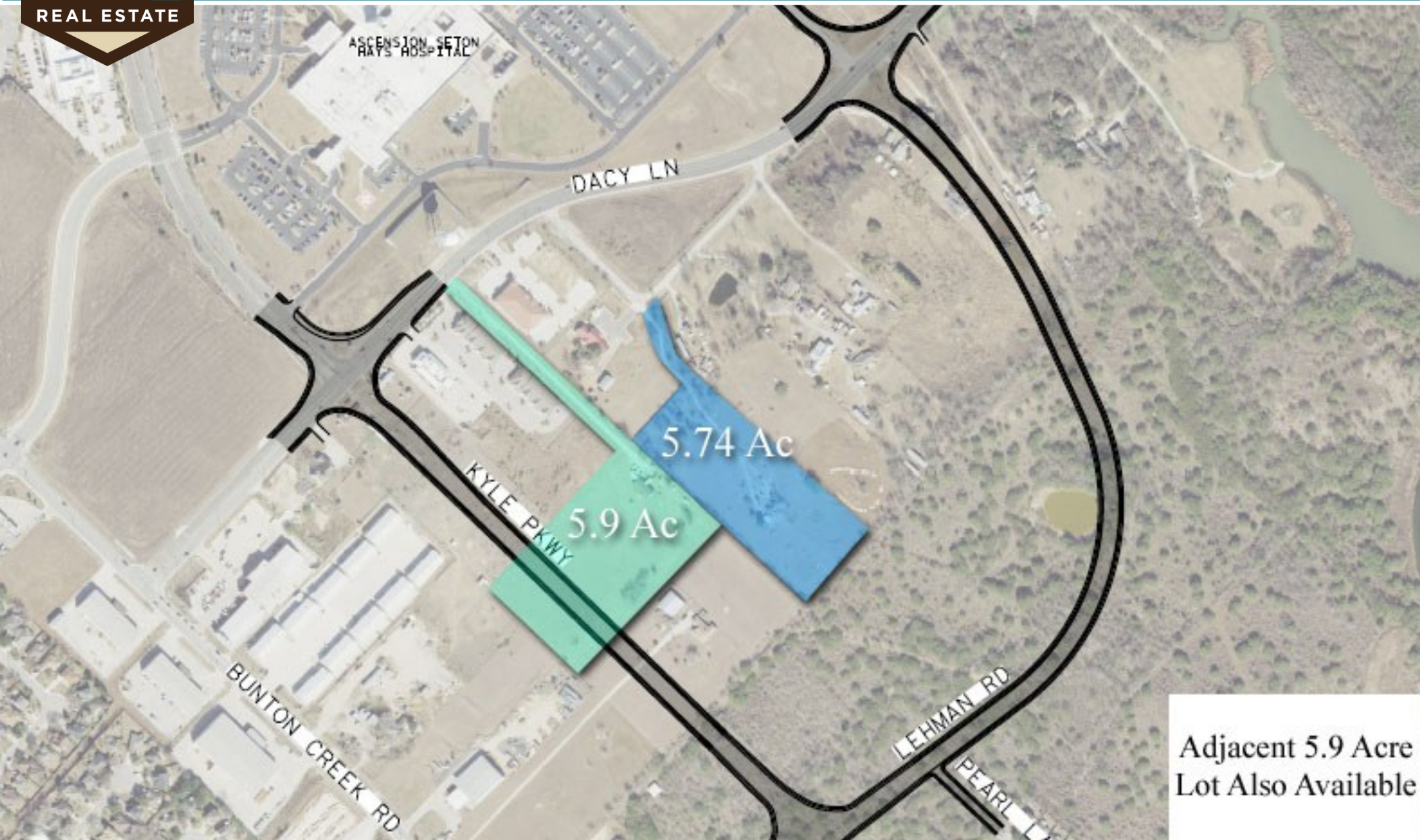
The information contained herein is from sources deemed reliable, however John B. Sanford, his employees and his agents have not made an independent confirmation of the information and no warranty or guarantee of accuracy is made. A prospective tenant or buyer should confirm any important information with the assistance of an engineer and/or attorney during a feasibility period prior to closing the sale or leasing the property.



John B. Sanford Real Estate

5.74 Acres—Dacy Ln at Kyle Parkway

1600 Dacy Ln, Kyle, TX 78640



Adjacent 5.9 Acre
Lot Also Available

J.D. Sanford

512-924-1459

JDsanfordreal@gmail.com

www.johnbsanford.com

John B. Sanford

512-922-5633

Johnbsanford@gmail.com

The information contained herein is from sources deemed reliable, however John B. Sanford, his employees and his agents have not made an independent confirmation of the information and no warranty or guarantee of accuracy is made. A prospective tenant or buyer should confirm any important information with the assistance of an engineer and/or attorney during a feasibility period prior to closing the sale or leasing the property.