

For Lease

1835 Dana Street Glendale | CA



Presented By:

Scott Cox
818.244.3000

scott@pacwestonline.com

DRE#01070703

Randy Rohrer
818.244.3000

randy@pacwestonline.com

DRE#00672287

Ron Rohrer
818.309.0628

ron@pacwestonline.com

DRE#01918399

Chris Rohrer
818.624.1180

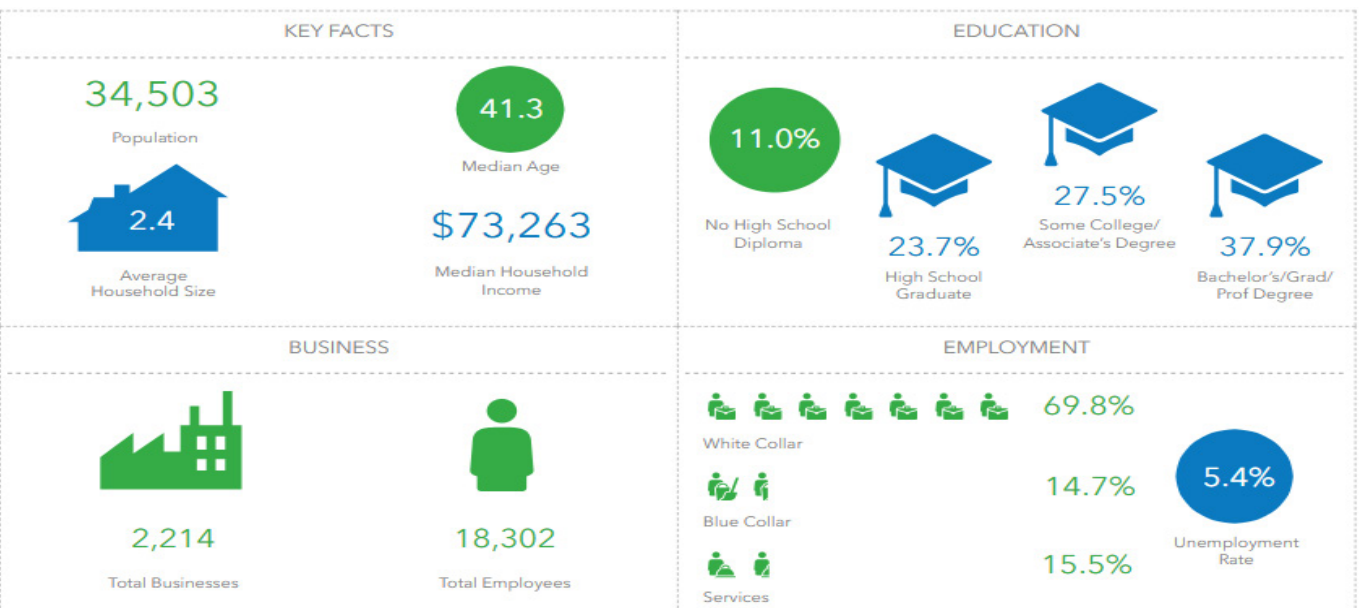
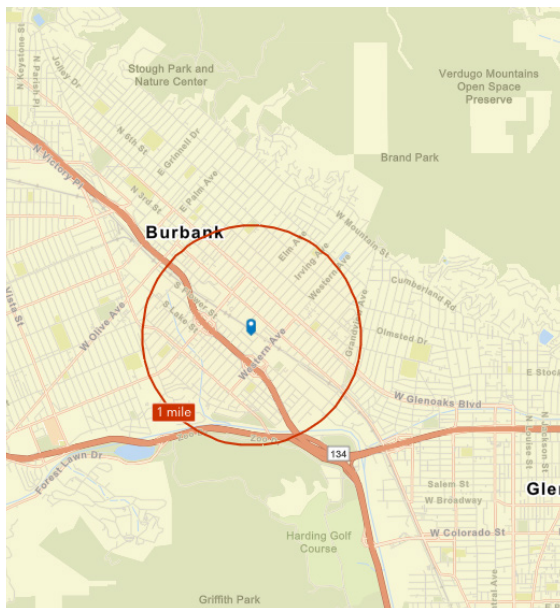
chris@pacwestonline.com

DRE#02018754



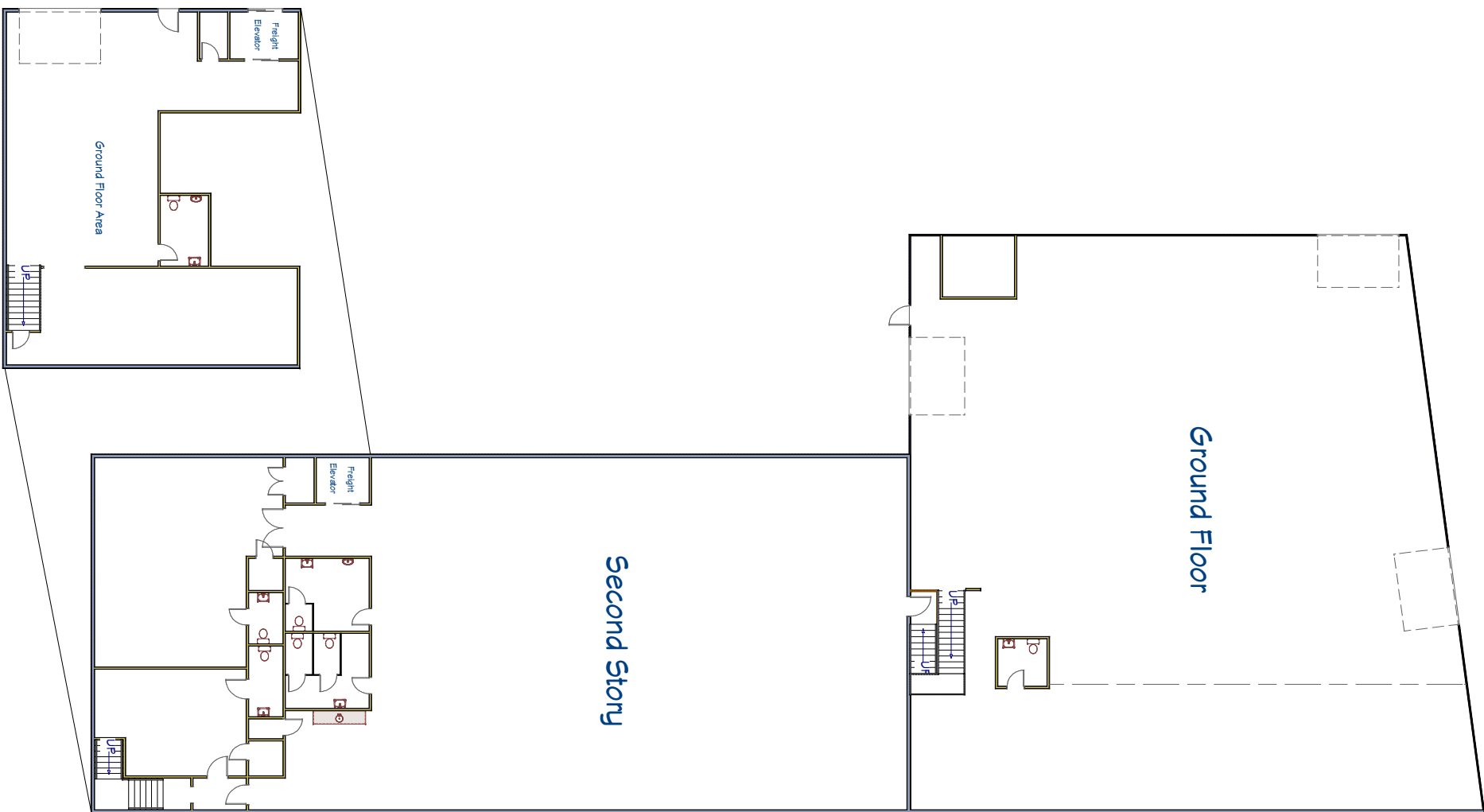
Property Information

Available SF:	15,806 SF	›	7,134 SF Warehouse
Asking Rate:	\$1.49/SF	›	18 Foot Clear Warehouse
Lease Type:	Modified Gross	›	8,672 SF 2nd Story Office / Flex
Zoning:	IND	›	Freight Elevator to 2nd Story
Parking:	20	›	Air Conditioned Office / Flex Space
Power:	800 A; 480 V; 3 Ph	›	4 GL Doors
Year Built	1960	›	Convenient 134 & 5 Freeway Access



The facts contained herein, while not guaranteed as to accuracy, are accurate to the best of our knowledge and belief.

Floor Plan



Pictures



Pictures



Map Location



1835 Dana St

Pacific West Business Properties, Inc.

6624 San Fernando Road Glendale, CA 91201 | 818-244-3000

