



COMMERCIAL

BERKSHIRE HATHAWAY
HomeServices
Utah Properties

SPACE AVAILABLE FOR LEASE AT RAIL CENTRAL!

RAIL CENTRAL 1790 BONANZA DRIVE #201 | PARK CITY, UTAH

FOR LEASE

Located in the heart of Park City adjacent to the Rail Trail, Suite 201 in Rail Central is 4,651 sf and is in great condition with modern updates. Features include a glass conference room, three glass office spaces, a reception desk, kitchen area, private bathroom and two decks.

This space has a total of 10 offices ranging from 113 sf to 139 sf and a large 714 sf gathering room that can be used as an open office space/cube farm. The kitchen is 165 sf, the conference room is 212 sf and there is also a 124-sf open work room that may be used as a print room.

- 4651 SF
- 10 OFFICES FROM 113 SF to 139 SF
- KITCHEN / WORK OR PRINT ROOM
POWDER ROOM / CONFERENCE ROOM
- TWO DECKS



PROPERTY DETAILS

RAIL CENTRAL 1790 BONANZA DRIVE #201 | PARK CITY, UTAH



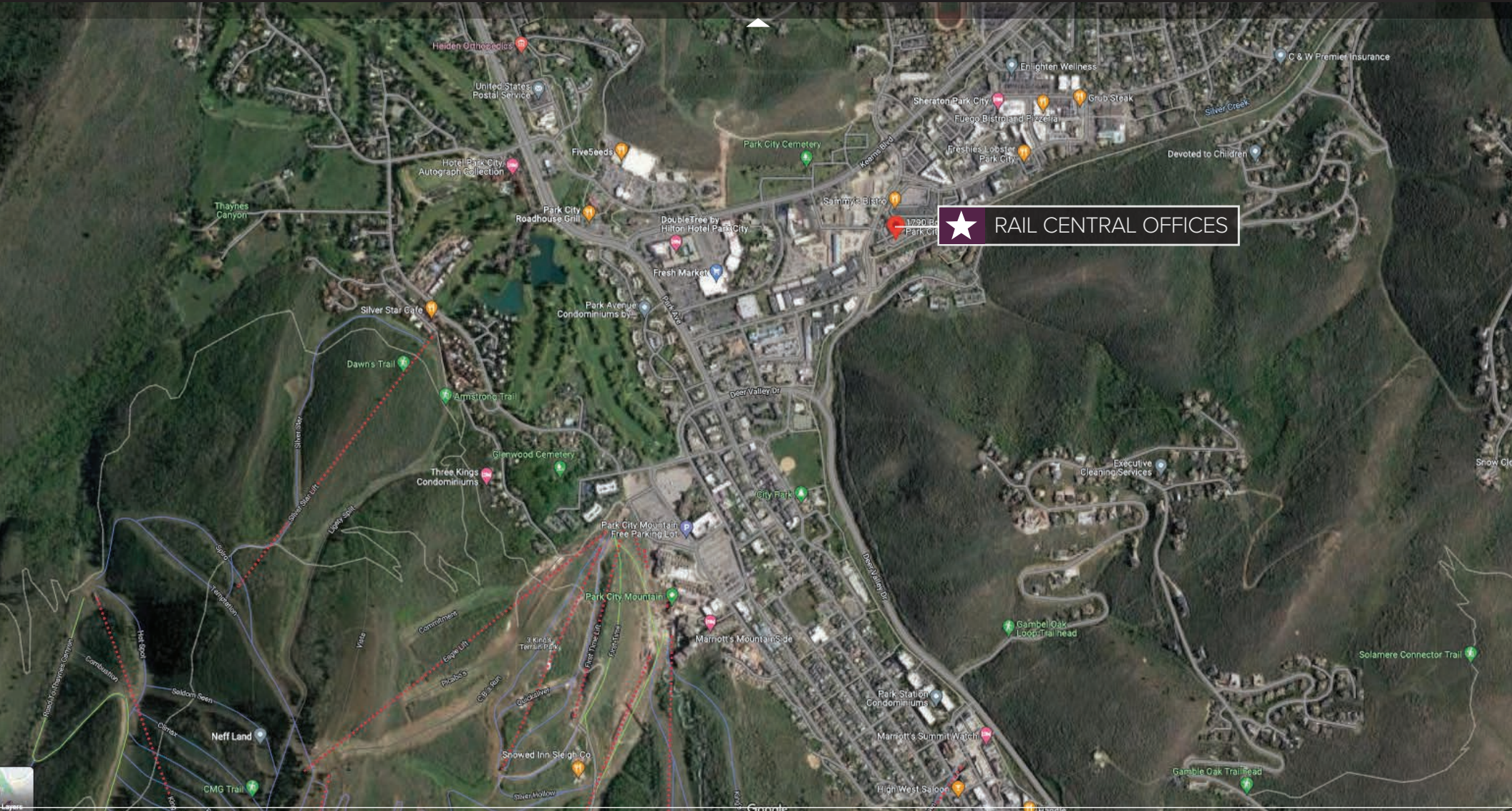
FLOOR PLANS

RAIL CENTRAL 1790 BONANZA DRIVE #201 | PARK CITY, UTAH



LOCATION

RAIL CENTRAL 1790 BONANZA DRIVE #201 | PARK CITY, UTAH





RAIL CENTRAL

1790 BONANZA DRIVE #201
PARK CITY, UTAH

- 4,651 sq. ft.
- 10 Offices Ranging From 113 sf to 139 sf
- 1 Private Powder Room
- Open Office Space – 714 sf
- Kitchen – 165 sf
- Conference Room – 212 sf
- Open Work Room/Print Room – 124 sf
- Two Decks



OFFERED AT
Rent - **\$26.00 psf**
CAM - **\$8.75 psf**



MICHAELFISCHER.BHHSUTAH.COM



MICHAEL FISCHER REALTOR®

(435) 659-7973 | michaelfischer@bhhsutah.com

www.michaelfischer.bhhsutah.com

2200 Park Avenue, Bldg B | Park City, Utah | BHHSUtah.com



COMMERCIAL

BERKSHIRE HATHAWAY

HomeServices

Utah Properties