

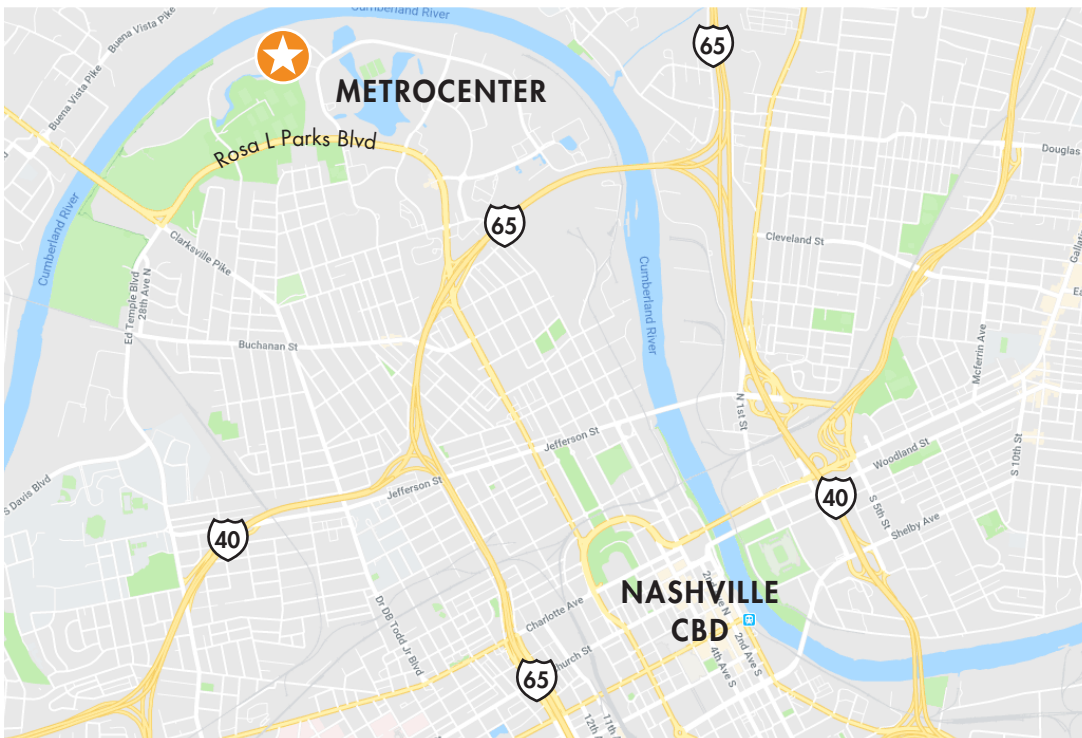


# THE RIVERVIEW BUILDING

FOR LEASE | 1,676 – 7,993 SF | OFFICE | METROCENTER

**FOUNDRY**  
COMMERCIAL

# PROPERTY OVERVIEW



## PROPERTY DETAILS

**Address** 545 Mainstream Drive, Nashville

**Submarket** Metrocenter

**Parking** 4/1000

**Asking Rate** \$25 PSF FSG

**Available SF**  
Suite 104: 1,676 RSF  
Suite 110: 2,514 RSF  
Suite 220: 7,993 RSF | 3/1/25  
Suite 407: 2,488 RSF

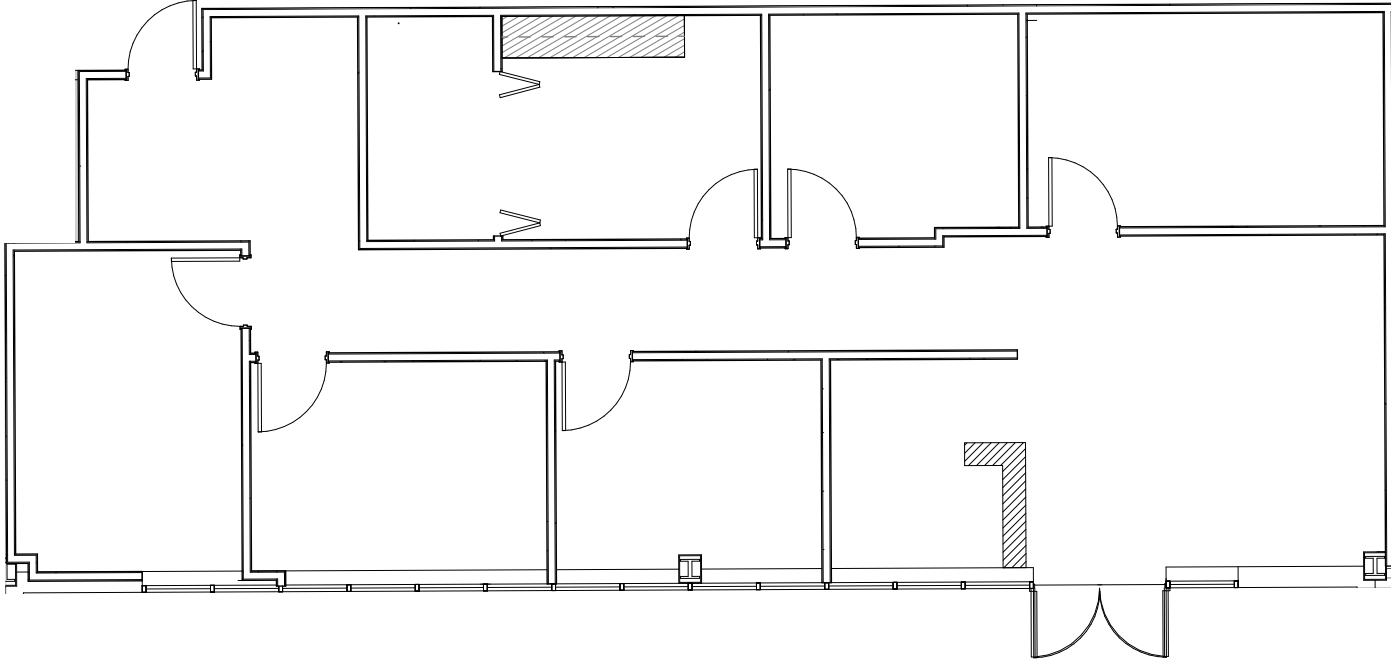
## PROPERTY HIGHLIGHTS

- Easy access to Nashville Central Business District
- 3 miles to courthouses and capitol; 2 miles to Germantown
- Direct access to the Cumberland River Greenway extending 1.5 miles into Downtown and Riverfront Park
- Abundant free surface parking available
- On-site food service market

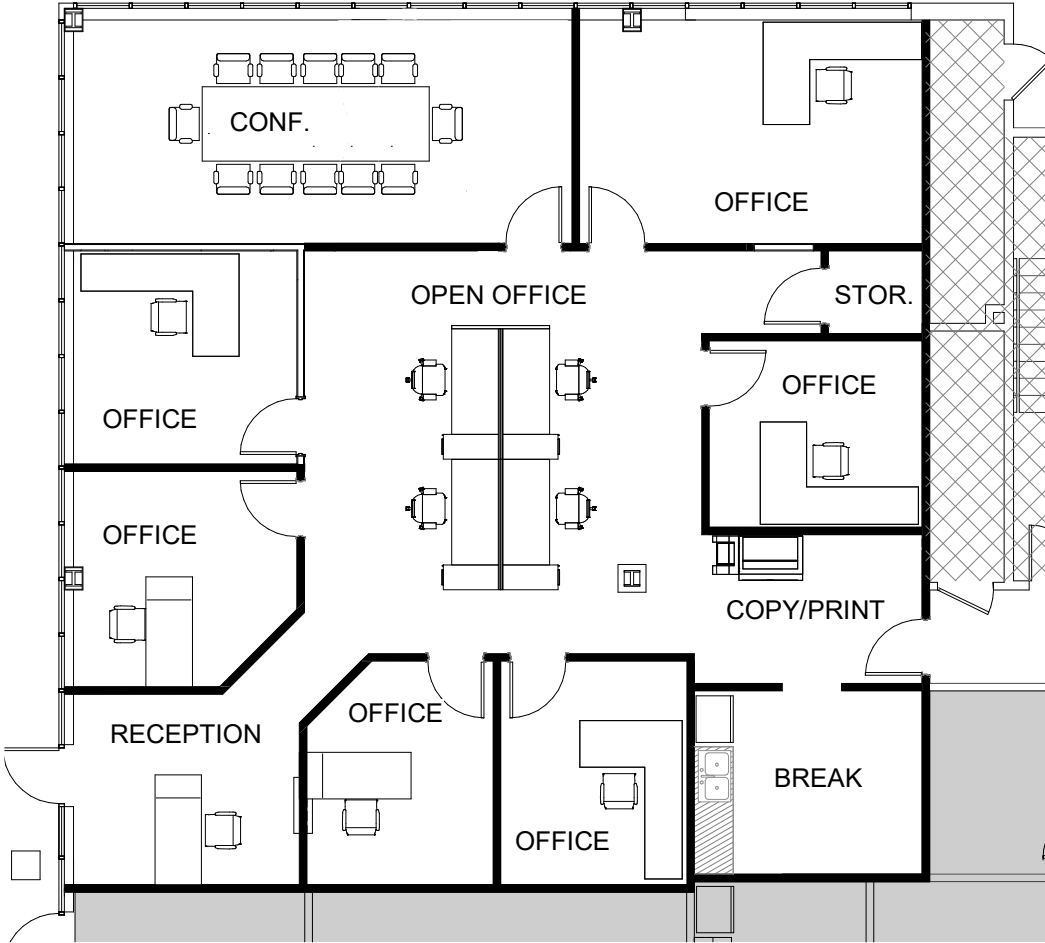
# BUILDING PHOTOS



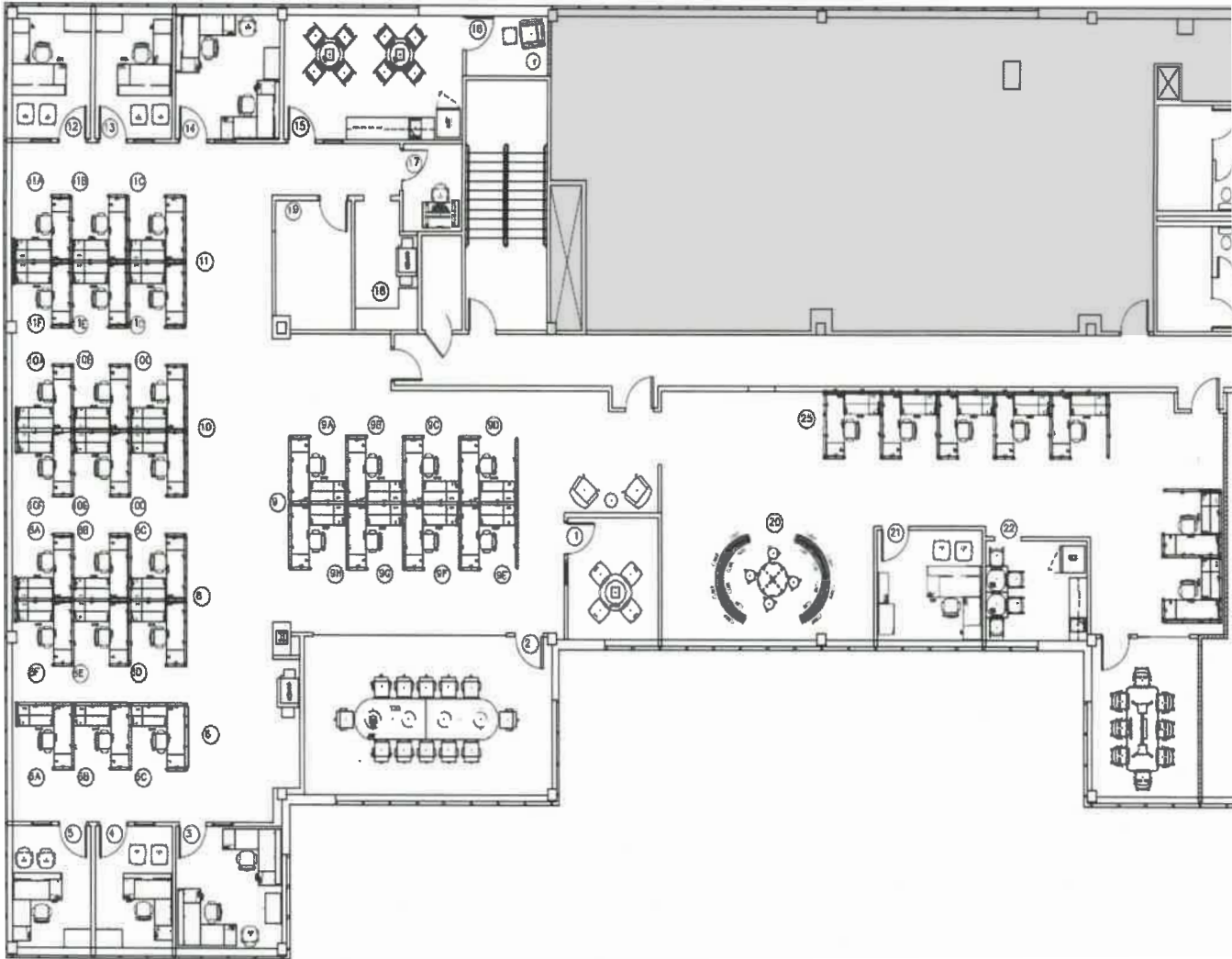
SUITE 104 - 1,676 SF



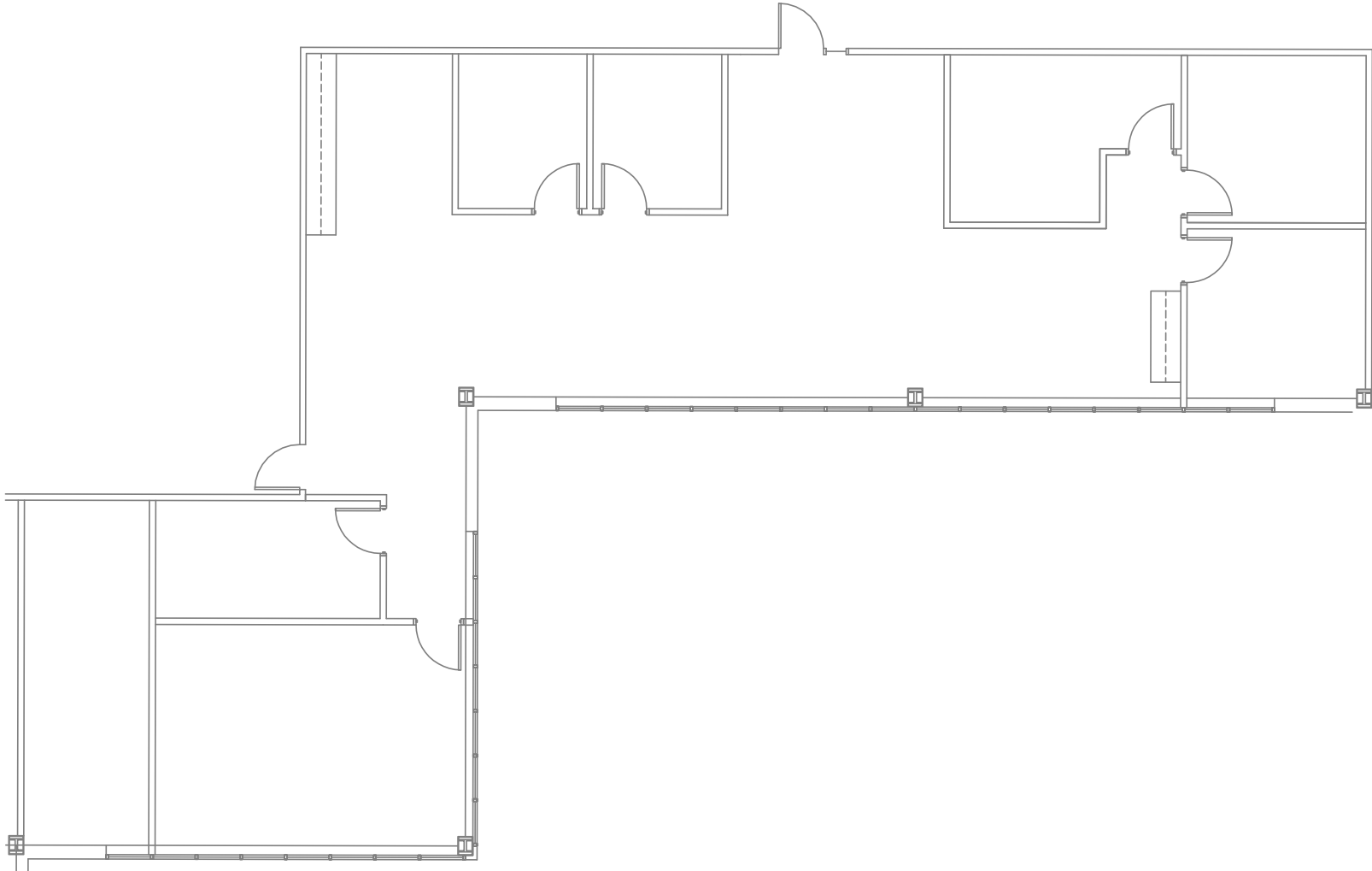
SUITE 110 - 2,514 SF



SUITE 220 - 7,993 SF | AVAILABLE 3/1/25



SUITE 407 - 2,488 SF



545 MAINSTREAM DRIVE  
NASHVILLE, TN

---

SHELBY HALL

SHELBY.HALL@FOUNDRYCOMMERCIAL.COM

615.771.0770

JOHN MUDGETT

JOHN.MUDGETT@FOUNDRYCOMMERCIAL.COM

615.334.7259

**FOUNDRY**  
COMMERCIAL

foundrycommercial.com

615.997.0010

