

500 ENTERPRISE DRIVE
ALLEN PARK, MICHIGAN

INDUSTRIAL FOR SALE OR LEASE
35,840 Square Feet Available

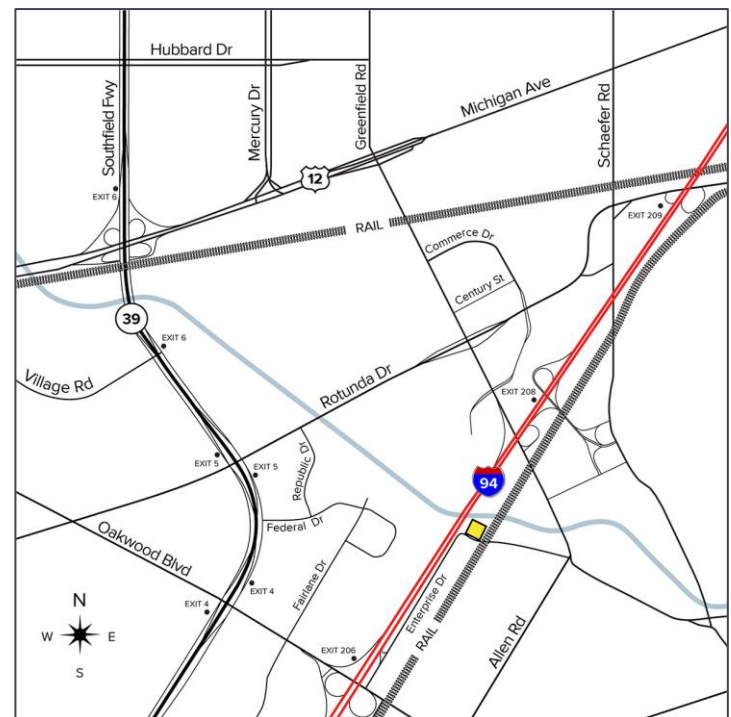


**SIGNATURE
ASSOCIATES**
KNOW SIGNATURE | KNOW RESULTS



PROPERTY FEATURES

- 35,840 square feet available
- 6,500 square feet office space
- 18' – 23' clear height
- (2) grade level doors, (3) truckwells
- 4.00 acres
- Zoned M-2
- Lease Rate: \$6.50/sq. ft. NNN
- Sale Price: \$2,688,000 (\$75.00/sq. ft.)



For more information, please contact:

STEVE GORDON

(248) 948 0101

sgordon@signatureassociates.com

GREG HUDAS

(248) 799 3162

ghudas@signatureassociates.com

SIGNATURE ASSOCIATES

One Towne Square, Suite 1200

Southfield, MI 48076

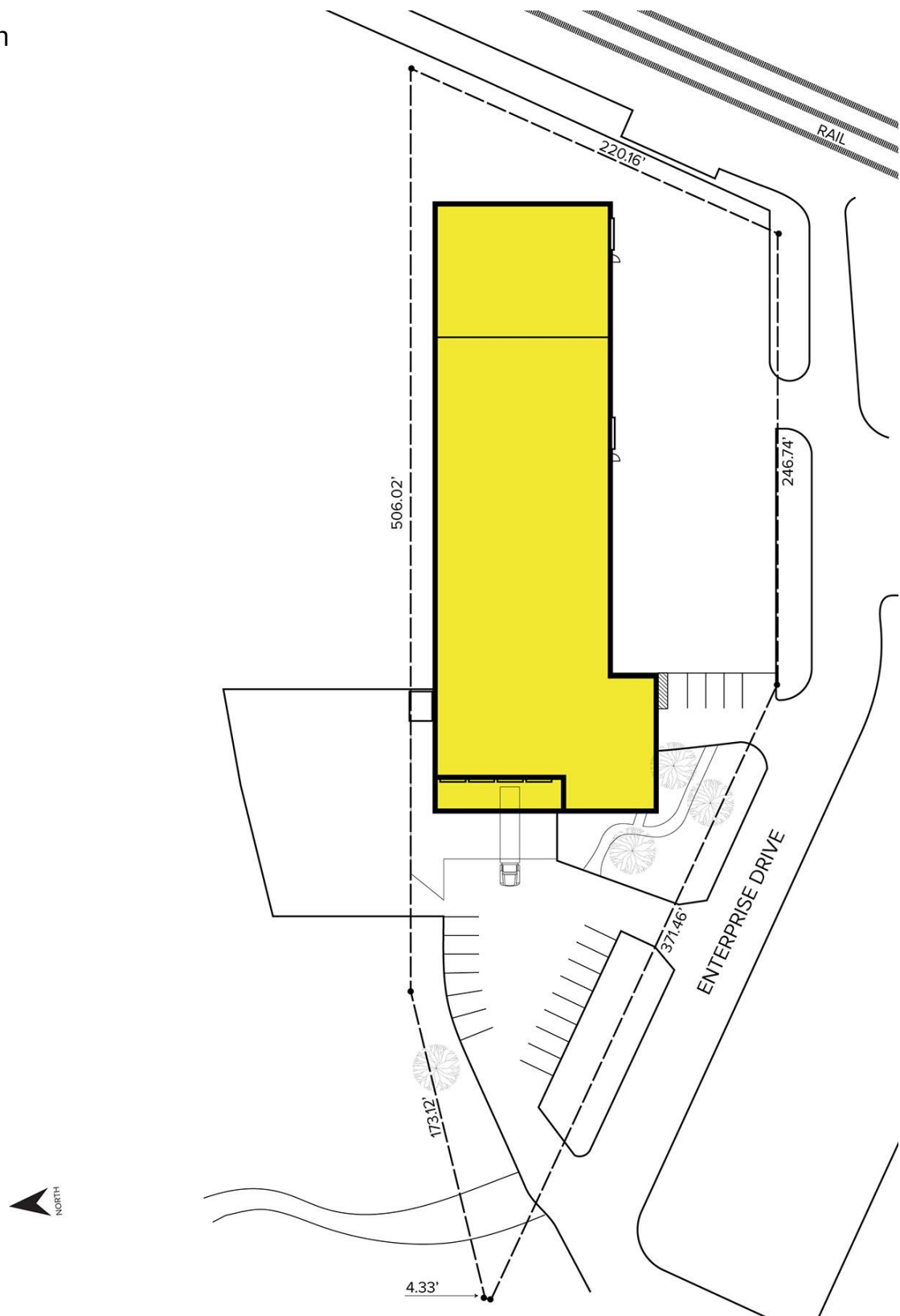
www.signatureassociates.com

500 Enterprise Drive – Allen Park, Michigan

Industrial For Sale or Lease

35,840
Square Feet
AVAILABLE

Site Plan



For more information, please contact:

STEVE GORDON
(248) 948 0101
sgordon@signatureassociates.com

GREG HUDAS
(248) 799 3162
ghudas@signatureassociates.com

SIGNATURE ASSOCIATES
One Towne Square, Suite 1200
Southfield, MI 48076
www.signatureassociates.com

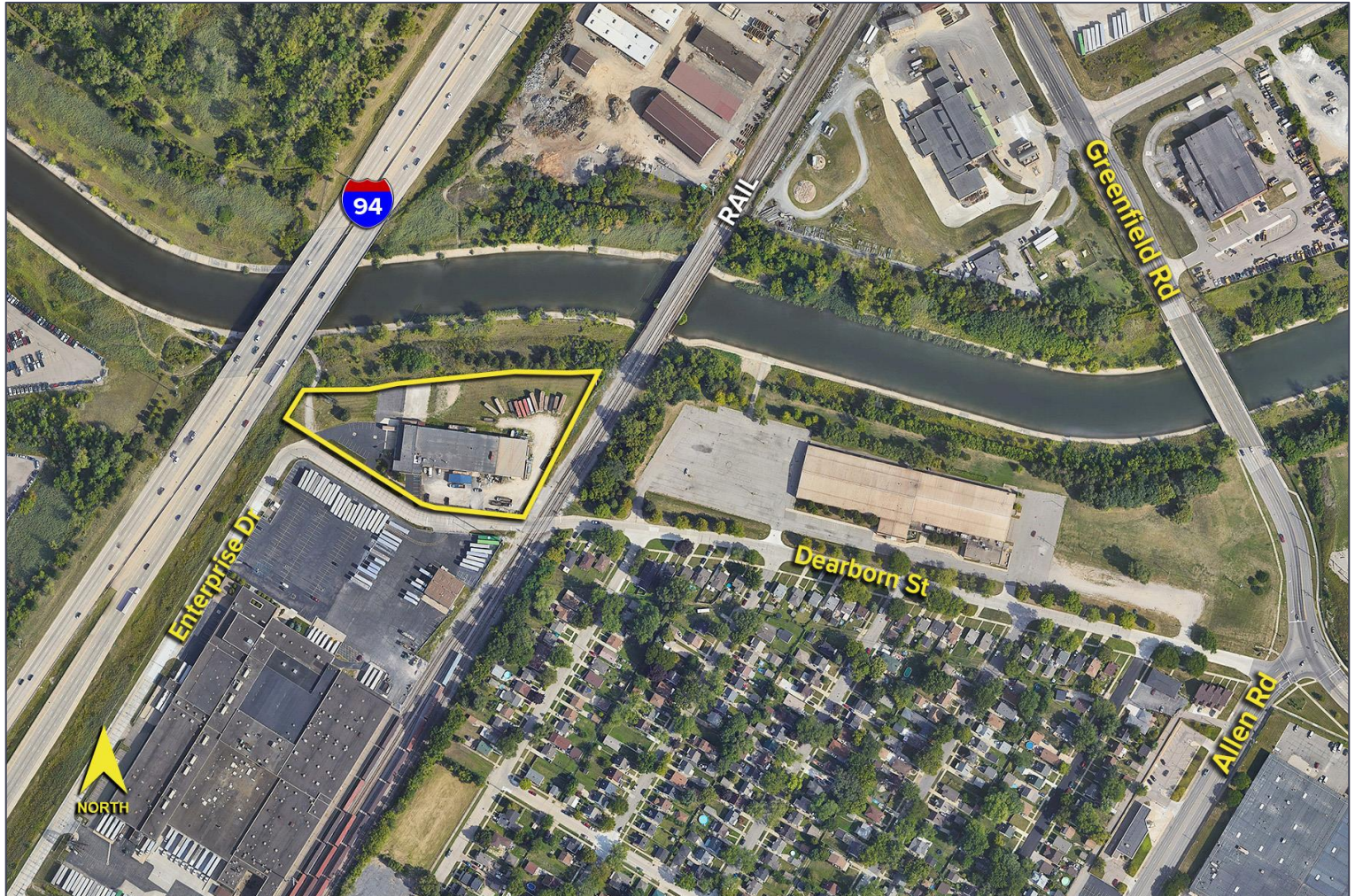
Information is subject to verification and no liability for errors or omissions is assumed. Price is subject to change and listing withdrawal.

500 Enterprise Drive – Allen Park, Michigan

Industrial For Sale or Lease

35,840
Square Feet
AVAILABLE

Aerial



For more information, please contact:

STEVE GORDON

(248) 948 0101

sgordon@signatureassociates.com

GREG HUDAS

(248) 799 3162

ghudas@signatureassociates.com

SIGNATURE ASSOCIATES

One Towne Square, Suite 1200

Southfield, MI 48076

www.signatureassociates.com

Information is subject to verification and no liability for errors or omissions is assumed. Price is subject to change and listing withdrawal.