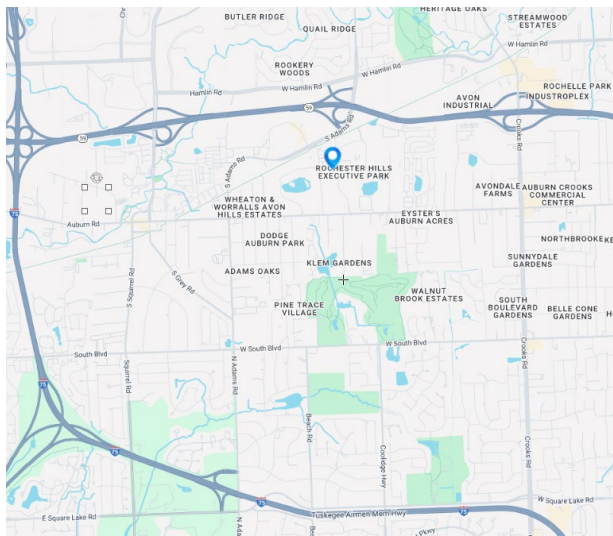




FOR SALE OR LEASE

# 2920 Technology Dr

Rochester Hills, MI



## Property Highlights

- 19,011 SF Available for Sale or Lease
- One (1) Interior Truckwell
- Buss Duct Bars
- Airlines
- Ample Parking (Expandable)
- 18' Ceiling Height

For information, please contact:

**Geoff Hill**

*Executive Managing Director*

t 248-350-1492

geoff.hill@nrmk.com

**Chris Hill**

*Director*

t 248-350-1192

chris.hill@nrmk.com

**Teddy O'Keefe**

*Associate*

t 248-447-2715

teddy.okeefe@nrmk.com

27725 Stansbury Blvd, Suite 300  
Farmington Hills, MI 48334



nrmk.com

# NEWMARK

The information contained herein has been obtained from sources deemed reliable but has not been verified and no guarantee, warranty or representation, either express or implied, is made with respect to such information. Terms of sale or lease and availability are subject to change or withdrawal without notice.

## Lease/Sale

2920 Technology Dr Rochester Hills, MI 48309-3588



### Pricing Information:

<b>Lease Rate Range:</b>	\$8.95-\$8.95 NNN
<b>Lease Type:</b>	NNN
<b>Sale Price:</b>	\$2,275,000
<b>Price per sf:</b>	\$119.67/sf
<b>Real Estate Taxes psf:</b>	\$1.50
<b>Building Insurance psf:</b>	N/A
<b>CAM psf:</b>	N/A

### Property Details:

<b>Total Building Area:</b>	19,011 sf	<b>Parcel ID:</b>	20-36-376-039
<b>Min/Max Available:</b>	N/A	<b>Parking Description:</b>	40 spaces
<b>Office Area:</b>	3,500	<b>Rail Served:</b>	No
<b>Property Type:</b>	General Industrial	<b>Cranes:</b>	No
<b>Tenancy:</b>	Single-tenant	<b>Heat:</b>	GFA
<b>Year Built:</b>	01/01/1991	<b>Clear Height Min/Max:</b>	18.0'
<b>Year Renovated:</b>		<b>Grade/Dock Doors:</b>	1 / 1
<b>Zoning:</b>	M-1	<b>Sprinkler:</b>	Yes
<b>Site/Parcel Area:</b>	1.52 acres	<b>Power:</b>	1,000 amps, 480 volt

### Comments:

Great manufacturing or warehousing building. 1 interior truckwell, buss duct, airlines, heavy power, room for parking lot expansion, exhaust fans.

#### Geoffrey Hill

248.350.1492

[Geoff.Hill@nmrk.com](mailto:Geoff.Hill@nmrk.com)

#### Chris Hill

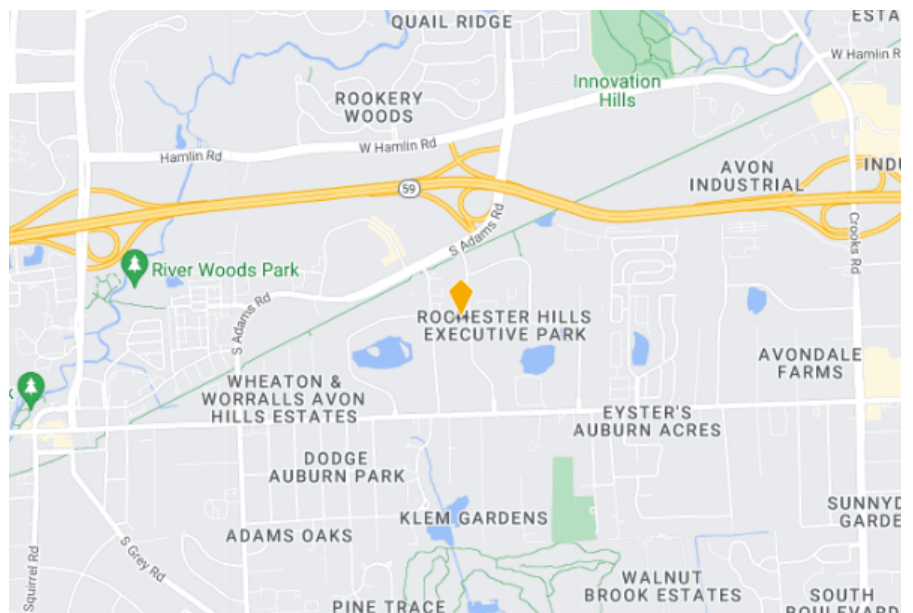
248.350.1192

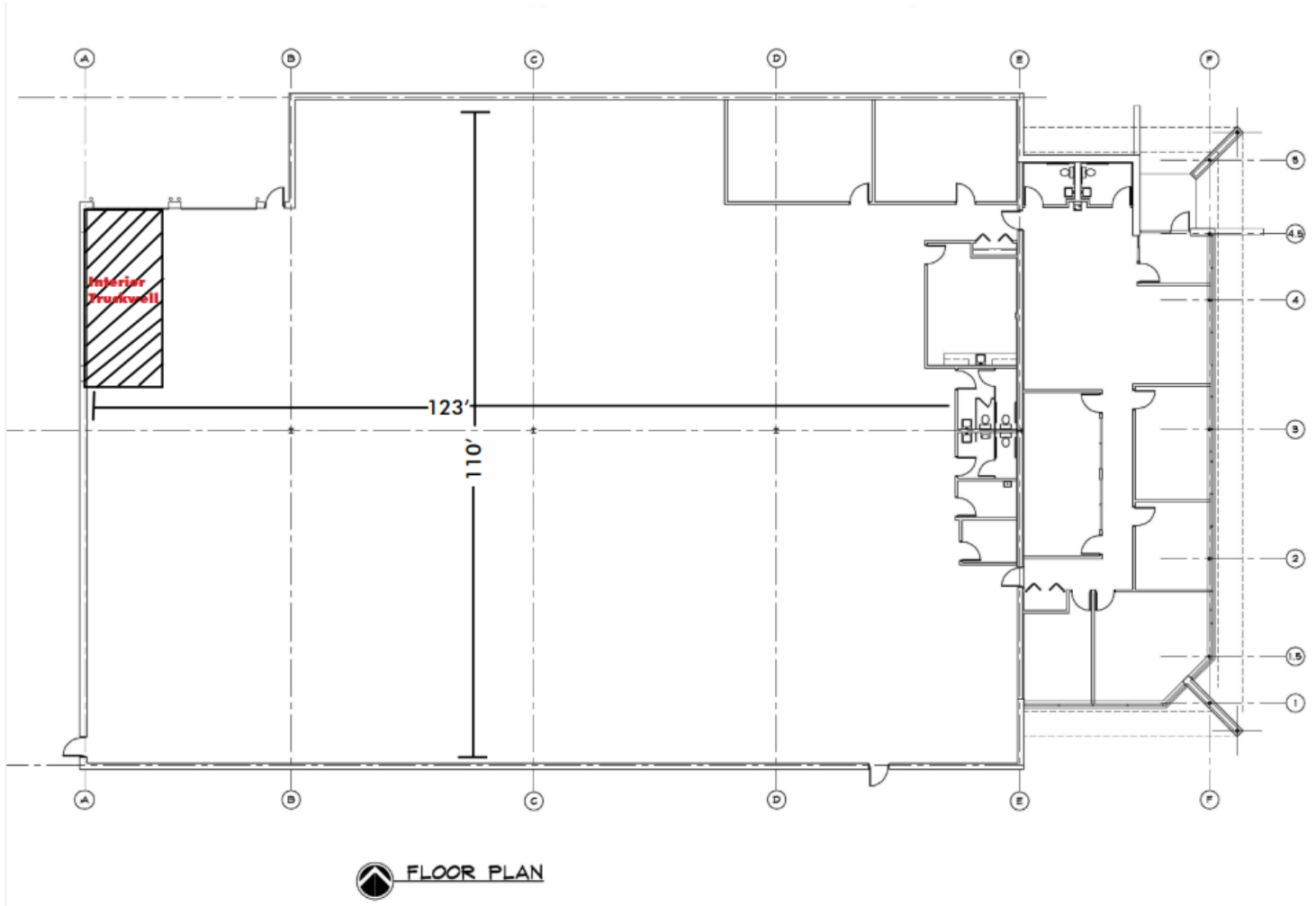
[Chris.Hill@nmrk.com](mailto:Chris.Hill@nmrk.com)

#### Teddy O'Keefe

248.447.2715

[Teddy.Okeefe@nmrk.com](mailto:Teddy.Okeefe@nmrk.com)





CONTACT

**Geoff Hill**

*Executive Managing Director*  
t 248-350-1492  
geoff.hill@nmrk.com

**Chris Hill**

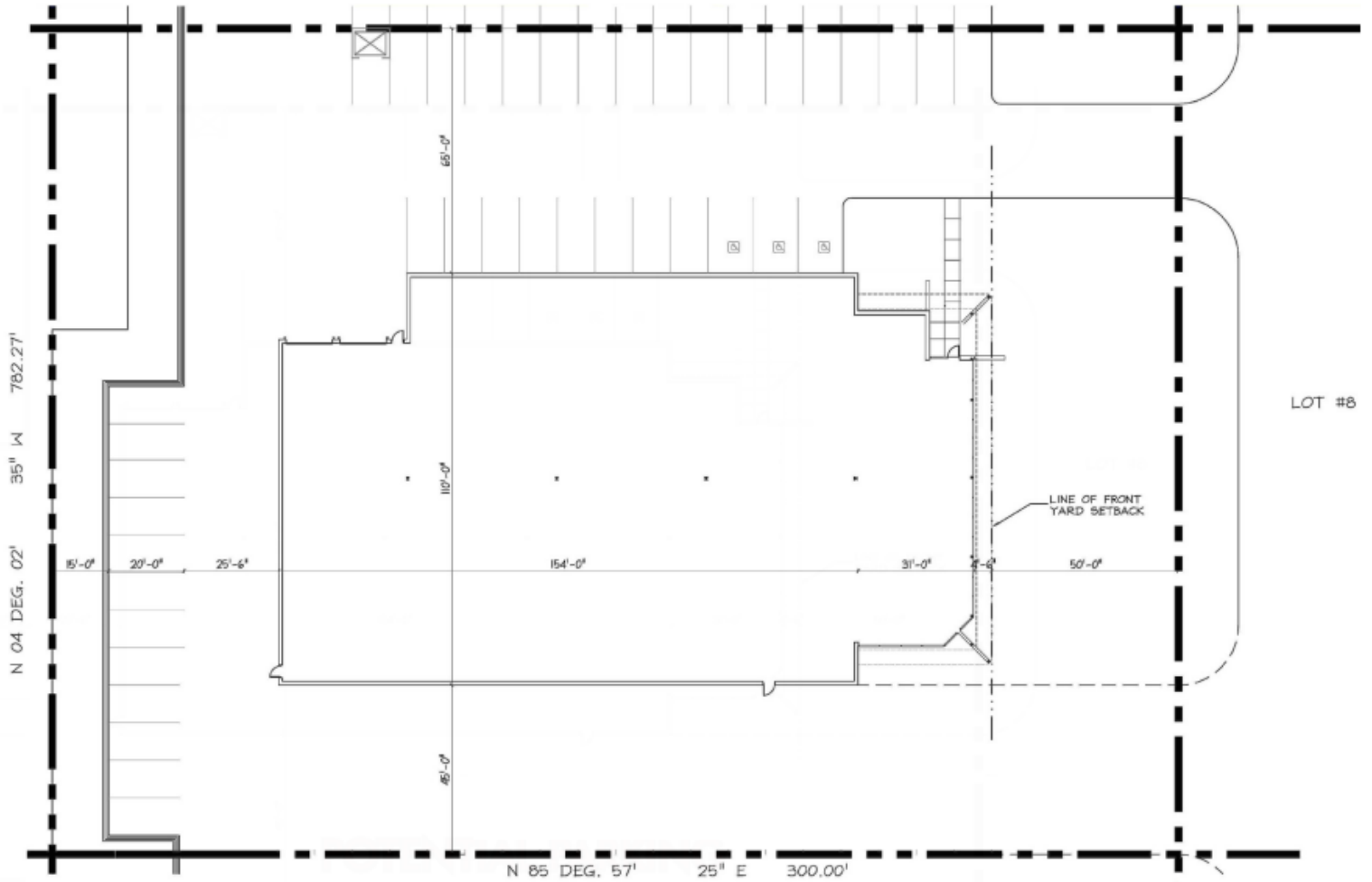
*Director*  
t 248-350-1192  
chris.hill@nmrk.com

**Teddy O'Keefe**

*Associate*  
t 248-447-2715  
teddy.okeefe@nmrk.com



# 2920 Technology Dr, Rochester Hills



## CONTACT

### Geoff Hill

*Executive Managing Director*  
t 248-350-1492  
geoff.hill@nmrk.com

### Chris Hill

*Director*  
t 248-350-1192  
chris.hill@nmrk.com

### Teddy O'Keefe

*Associate*  
t 248-447-2715  
teddy.okeefe@nmrk.com

# NEWMARK

2920 Technology Dr, Rochester Hills



**CONTACT**

**Geoff Hill**

*Executive Managing Director*  
t 248-350-1492  
geoff.hill@nmrk.com

**Chris Hill**

*Director*  
t 248-350-1192  
chris.hill@nmrk.com

**Teddy O'Keefe**

*Associate*  
t 248-447-2715  
teddy.okeefe@nmrk.com

**NEWMARK**