

# 825

**N GIBSON ROAD**

LAS VEGAS, NV 89011

## HENDERSON MEDICAL PLAZA MEDICAL OFFICE FOR LEASE

**±2,590 - 9,856 SF**  
**SHELL SPACE AVAILABLE**



**MIKE TYMCZYN**

VICE PRESIDENT  
702.216.2371 **DIRECT**  
miket@dcghealthcare.com  
BS.0147041



**HEALTHCARE**

**CORFAC**  
INTERNATIONAL

## PROPERTY HIGHLIGHTS

- Convenient access off the I-11 between Green Valley and Cadence communities.
- Shell spaces allow for customized build outs, inclusive of tenant improvement allowances, to suit virtually any practice size.
- Current specialties include: **Cardiology - Podiatry - Wound Care and Outpatient Surgery Center - Pediatrics**

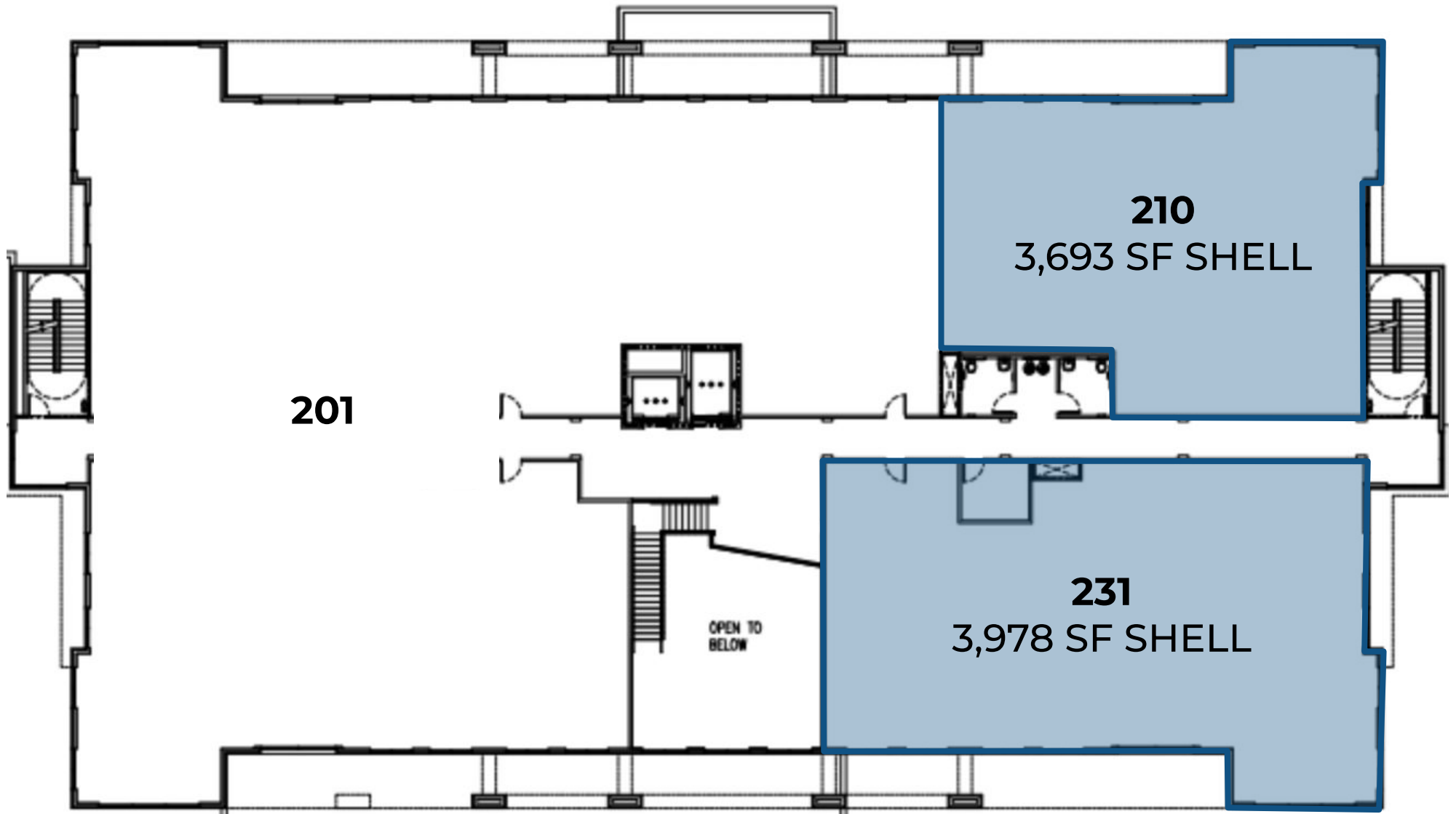


# HENDERSON MEDICAL PLAZA



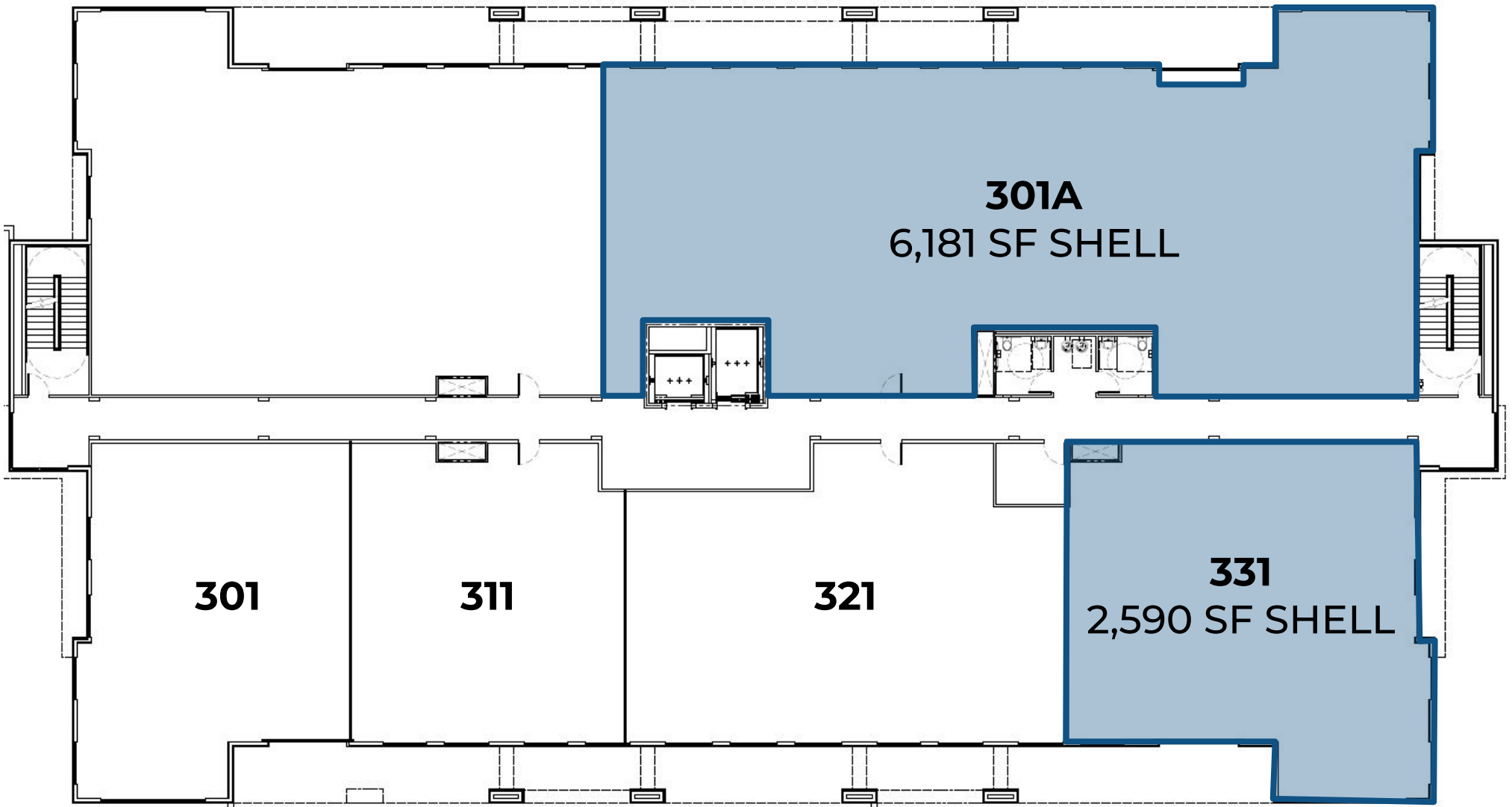
**SECOND FLOOR**

**±7,671 SF**  
**Shell Space Available**  
DIVISIBLE



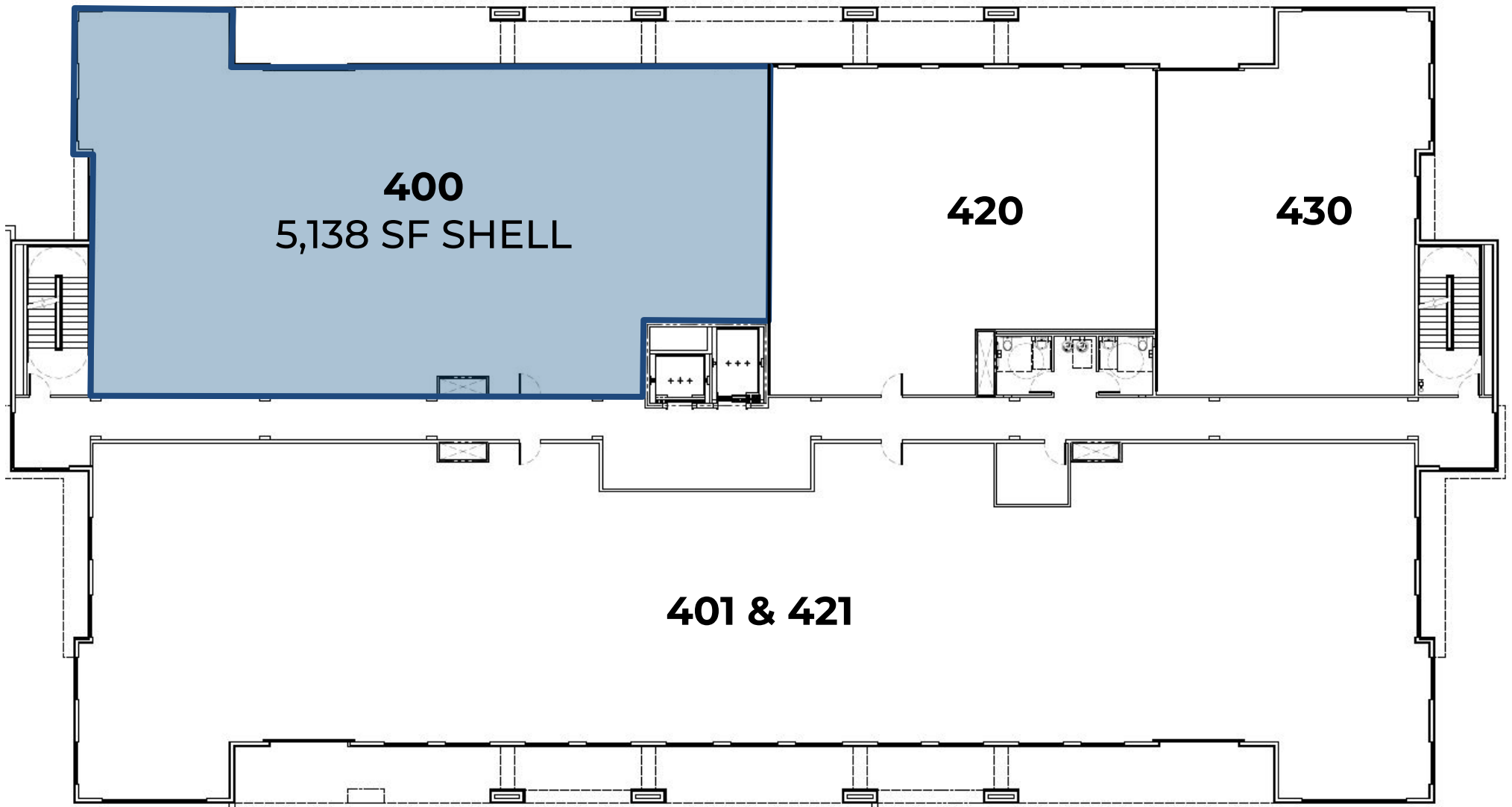
**THIRD FLOOR**

**±8,771 SF**  
**Shell Space Available**  
DIVISIBLE



**FOURTH FLOOR**

**±5,138 SF**  
**Shell Space Available**  
DIVISIBLE



# HOSPITAL SERVICES



## Cardiovascular

- Chest Pain Center
- Cardiac catheterization
- Angioplasty
- Stenting
- Intravascular Ultrasound
- Pacemaker/ICD insertion

## Emergency Services

- Urgent and emergency care 24/7
- 20 universal rooms
- Trauma area
- Rapid treatment care
- Freestanding emergency

## Endoscopic Procedures

## Gastroenterology

## Maternity Services

- Antepartum
- Labor and delivery
- Postpartum
- Level I Nursery
- Level II Neonatal ICU

## Neurology

- Joint/sports medicine

## Orthopedics

## Laboratory Services

## Radiology

- Angiography
- CT scan
- MRI
- Nuclear Medicine
- X-ray
- Digital mammography

## Rehabilitation

- Inpatient Physical Therapy
- Speech Therapy
- Occupational Therapy
- Short-term inpatient rehabilitation unit

## Surgery

- Inpatient
- Outpatient
- Robotic

## Wound Care

- Inpatient care
- Outpatient care
- Hyperbaric medicine