



**6.15 Acres
Available**

Fort Worth Property

West Risinger Road & Summer Creek Drive

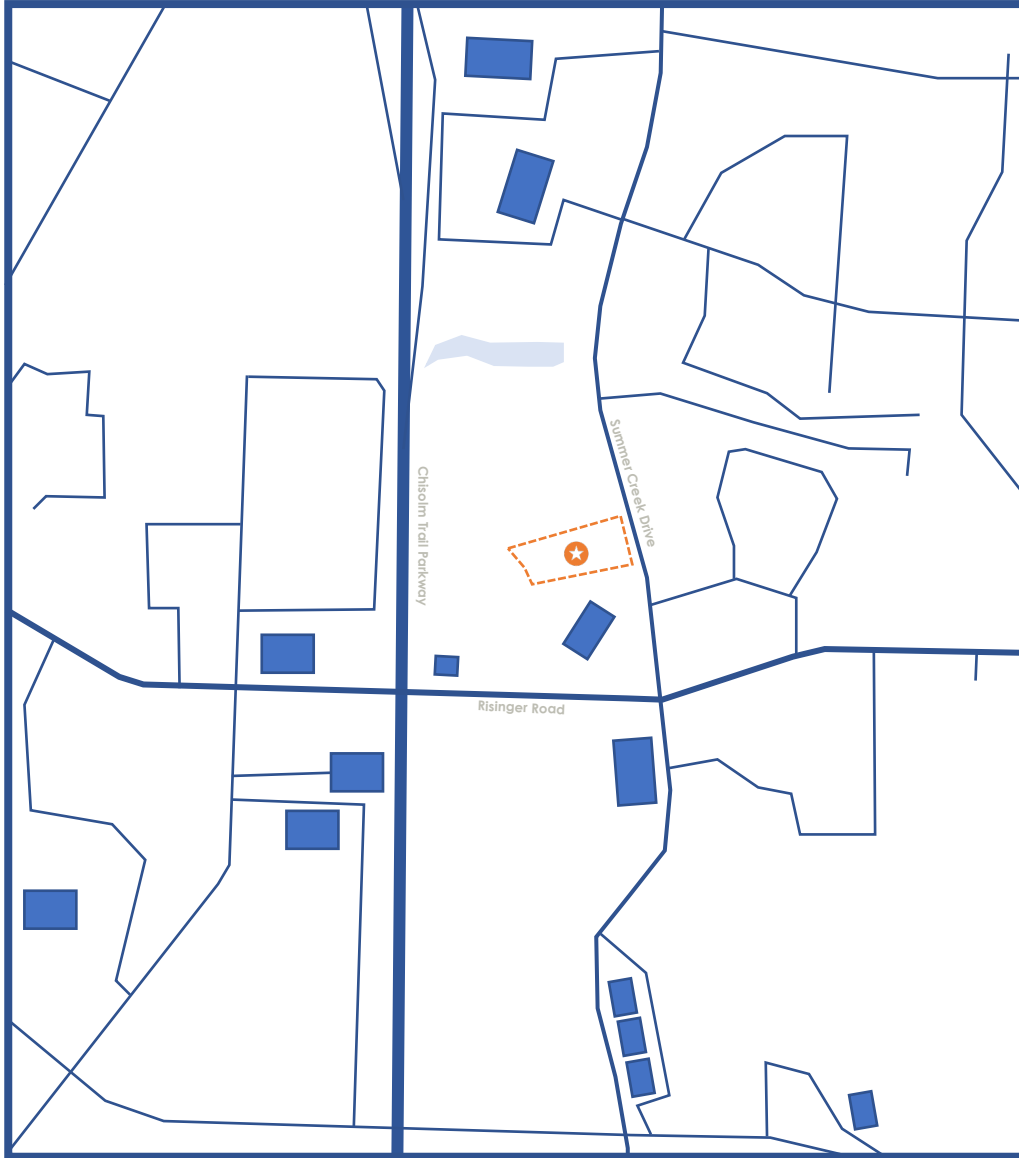
Land For Sale

Asking Price: \$2,171,901.60

6.15 Acre Development Parcel

Fort Worth, Texas

Site Overview



Located on the corner of West Risinger Road and Summer Creek Drive in a growing part of Fort Worth, Texas. Zoned PD 1152. The property is surrounded with rooftops with highway visibility from the Chisolm Trail Parkway Toll Road. This site is ideal for value office, medical office space or a residential neighborhood. The site is partially located within a flood plain only allowing for 4.32 acres to be developed.

6.15 Acres

Office | Retail | Flex | Medical

PD 1152

West Risinger Road and
Summer Creek Drive

Asking Price: \$2,171,901.60

Site Aerials



Site Aerials



Demographics

Area Profile



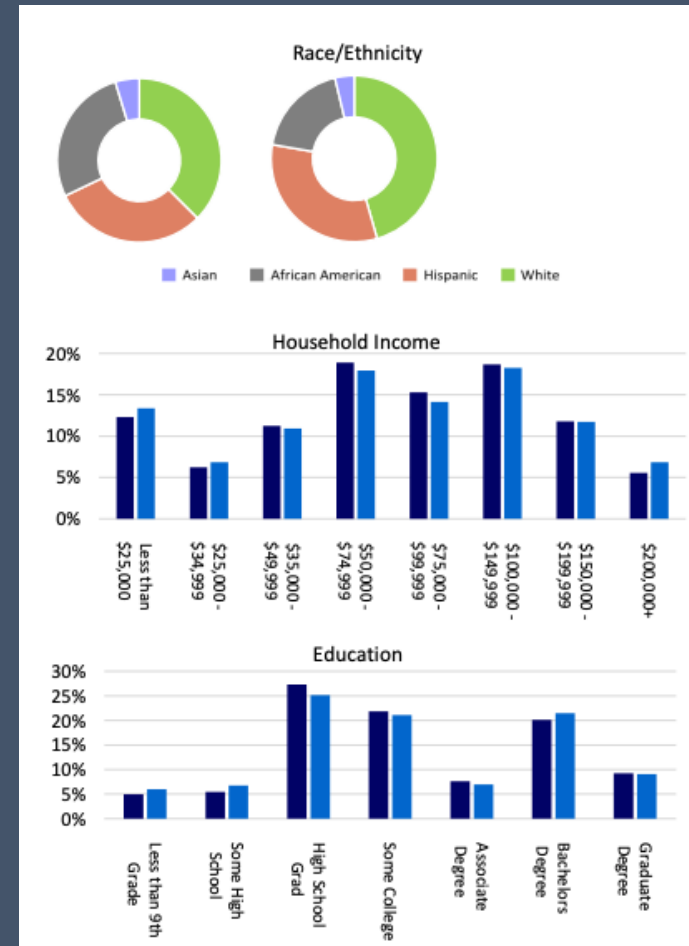
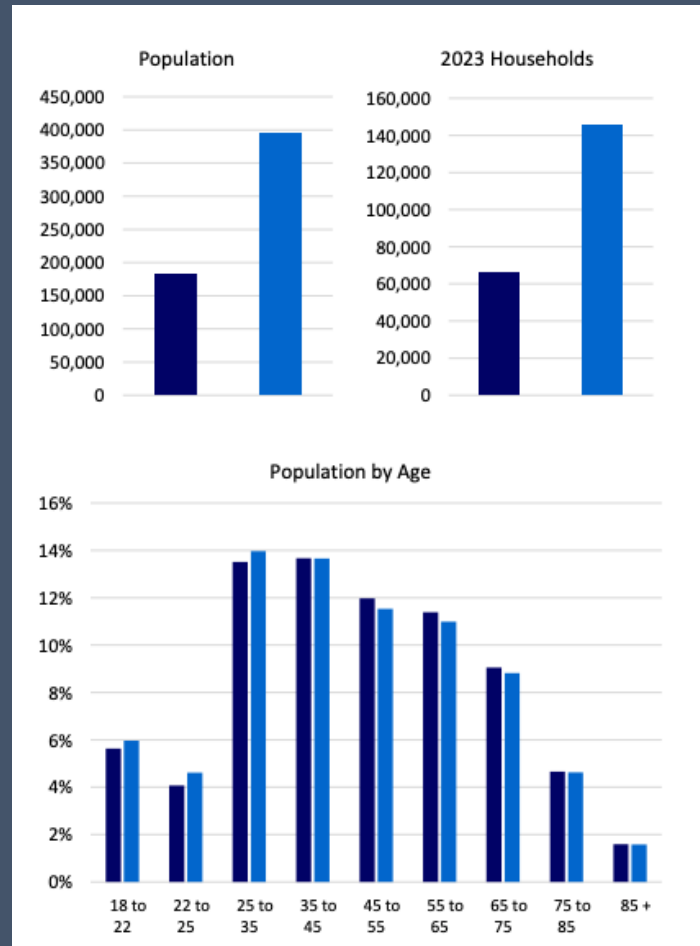
Population
182,216



Average Household Income
\$100,943



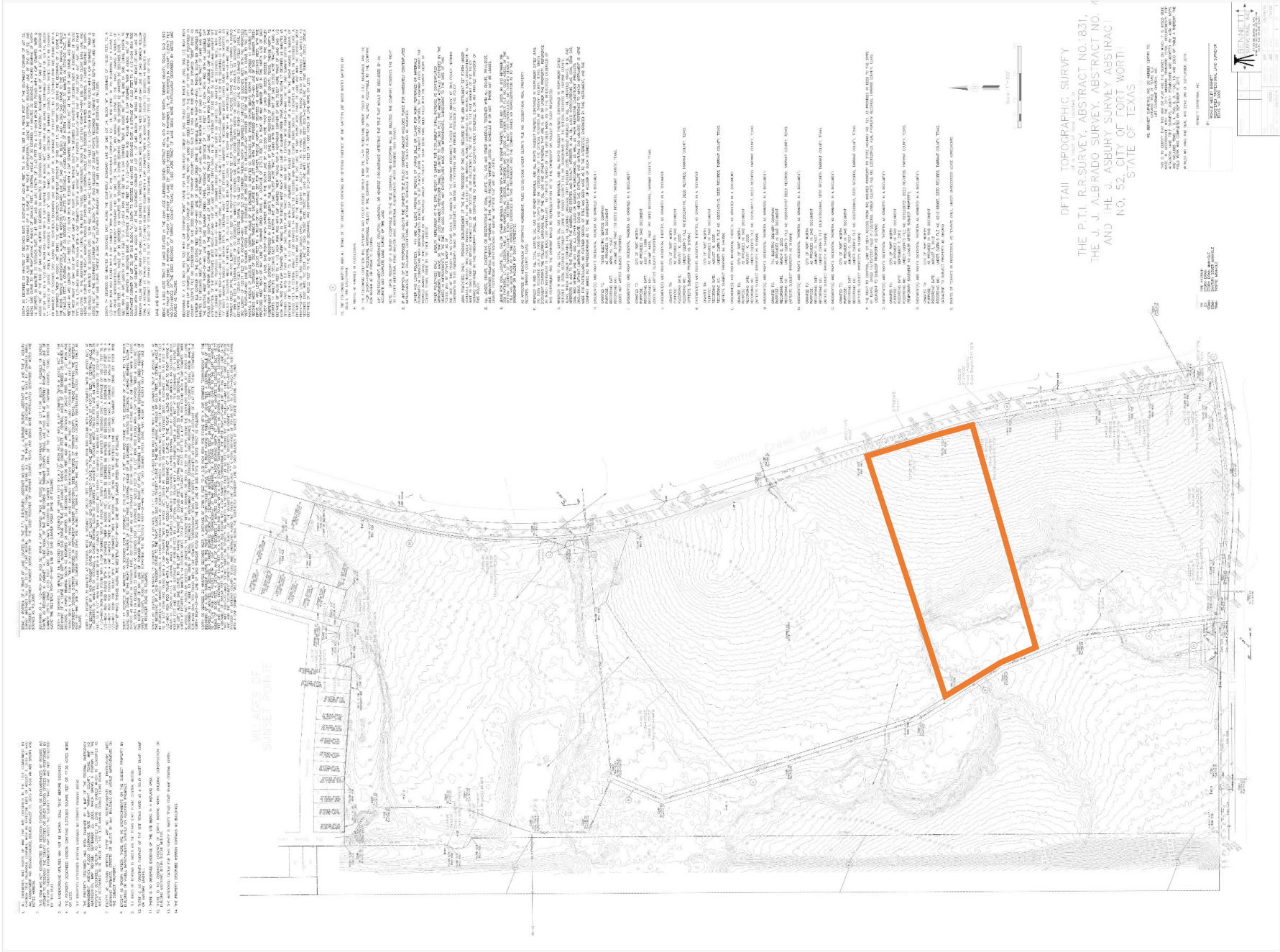
Average Age
38.1



Legend

- 5 Mile Radius
- 20 Minute Drive Time

ALTA Survey





Fort Worth Property

Looking for more info?

To request additional information on this property, or to submit an offer, [click here](#).