

# 12950 BRADLEY AVENUE

SYLMAR, CA 91342

±34,650 SF

FOR LEASE



## PROPERTY FEATURES

- ▶ 34,650 SF Available
- ▶ Built in 1970, Renovated 2024
- ▶ 21' Clear Height
- ▶ M1 Zoning
- ▶ Power: 400,600a; 120,240v; 1,3p; 3,4w
- ▶ One Exterior Dock (10'x14')
- ▶ Two Ground Level Doors (12'x12')
- ▶ 57,935 SF of Land - 70 Surface Parking Spaces



### GEORGE STAVARIS

Managing Director  
george.stavaris@jll.com  
+1 818 429 9412  
RE License #01267454

### BRENT WEIRICK

Senior Managing Director  
brent.weirick@jll.com  
+1 818 389 3003  
RE License #00954803

### JACKSON WEIRICK

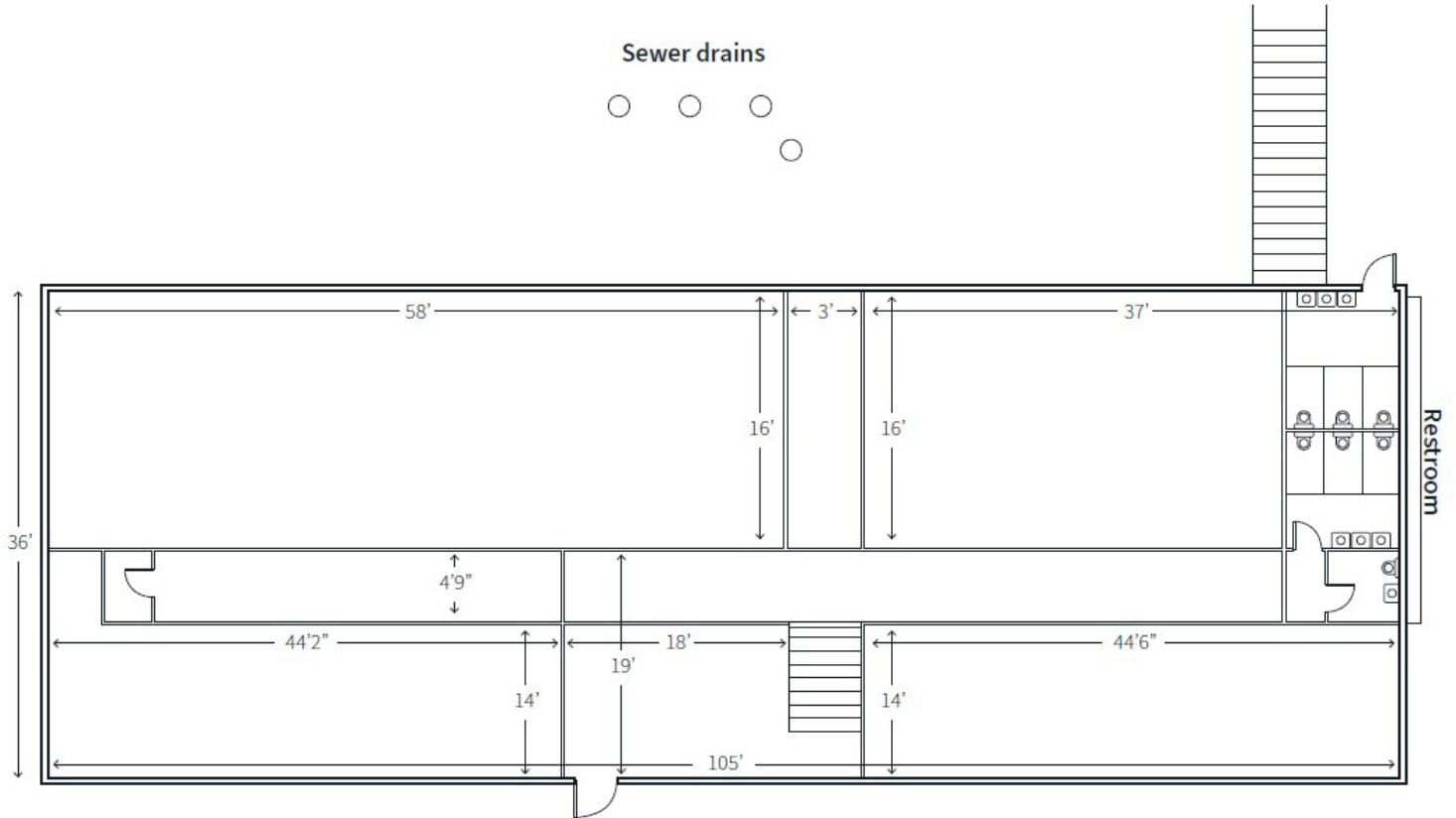
Associate  
jackson.weirick@jll.com  
+1 818 389 8021  
RE License #02199890

# 12950 BRADLEY AVENUE

SYLMAR, CA 91342

## FLOORPLANS

FIRST FLOOR



### GEORGE STAVARIS

Managing Director  
george.stavaris@jll.com  
+1 818 429 9412  
RE License #01267454

### BRENT WEIRICK

Senior Managing Director  
brent.weirick@jll.com  
+1 818 389 3003  
RE License #00954803

### JACKSON WEIRICK

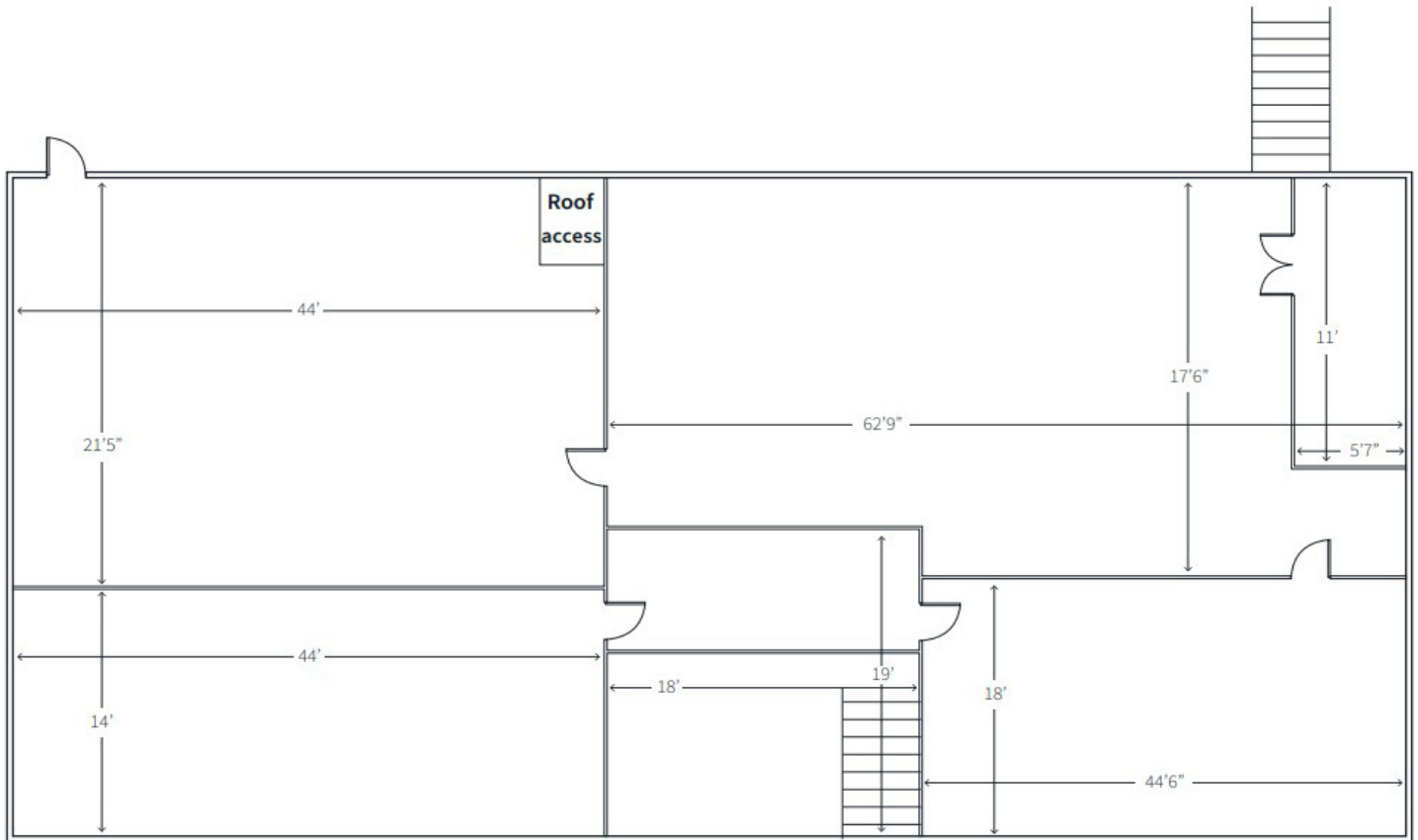
Associate  
jackson.weirick@jll.com  
+1 818 389 8021  
RE License #02199890

# 12950 BRADLEY AVENUE

SYLMAR, CA 91342

## FLOORPLANS

SECOND FLOOR



### GEORGE STAVARIS

Managing Director  
george.stavaris@jll.com  
+1 818 429 9412  
RE License #01267454

### BRENT WEIRICK

Senior Managing Director  
brent.weirick@jll.com  
+1 818 389 3003  
RE License #00954803

### JACKSON WEIRICK

Associate  
jackson.weirick@jll.com  
+1 818 389 8021  
RE License #02199890



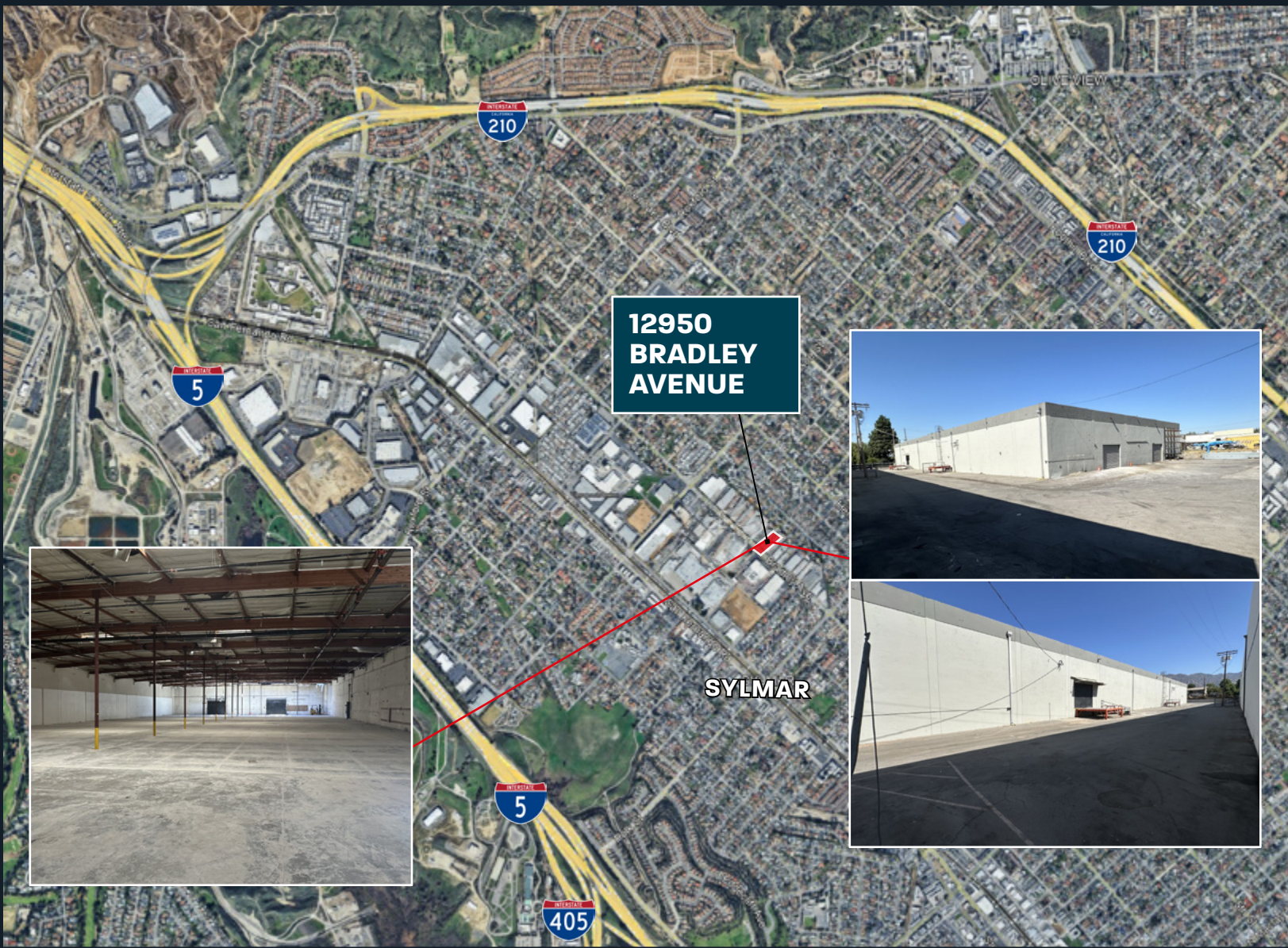
# 12950 BRADLEY AVENUE

SYLMAR, CA 91342

±34,650 SF

FOR LEASE

## AREA OVERVIEW & PROPERTY PHOTOS



**GEORGE STAVARIS**

Managing Director  
george.stavaris@jll.com  
+1 818 429 9412  
RE License #01267454

**BRENT WEIRICK**

Senior Managing Director  
brent.weirick@jll.com  
+1 818 389 3003  
RE License #00954803

**JACKSON WEIRICK**

Associate  
jackson.weirick@jll.com  
+1 818 389 8021  
RE License #02199890