

# TRI-CITY PLAZA

5220 E BAY DR., LARGO, FL 33764

# FOR LEASE




## LOCATION DESCRIPTION

The center is a premier retail destination on US Hwy. 19, a major thoroughfare in Pinellas County.

## PROPERTY HIGHLIGHTS

- 1,600 SF space available
- Tri-City Plaza is anchored by Publix, Five Below, Petco, DollarTree, Ross, J Lee Salon Suites, Ross, Burlington and LA Fitness
- All Phases have now been completed.
- Strong position in market with high traffic counts
- Multiple access points with full signal at main entry of the property from East Bay Dr



 DEMOGRAPHICS	1 MILE	3 MILES	5 MILES
Total Population	13,904	94,758	238,996
Daytime Population	13,039	101,130	290,420
Households	6,705	44,220	108,924
Average HH Income	\$88,019	\$90,453	\$92,006



### ERIC BATTISTONE

eric.battistone@tscg.com  
813.547.6804

### JEREMY KRAL

jeremy.kral@tscg.com  
813.547.6804

### NICK ANTHONY

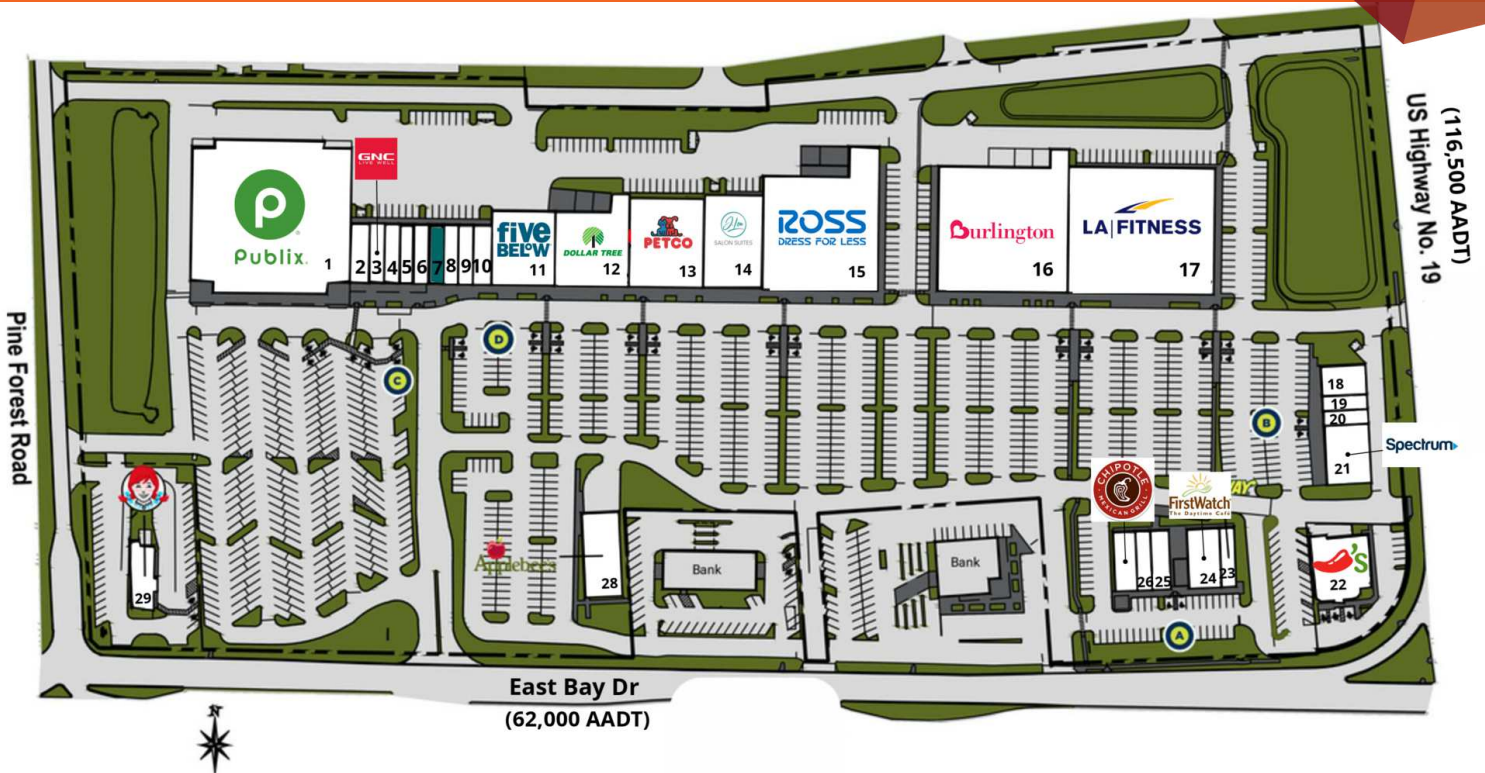
nick.anthony@tscg.com  
813.373.4810



# TRI-CITY PLAZA

5220 E BAY DR., LARGO, FL 33764

# FOR LEASE



SUITE	TENANT NAME	SPACE SIZE
1	Publix	42,112 SF
2	H&R Block	2,413 SF
3	GNC	1,600 SF
4	Supercuts	1,600 SF
5	Pizza Hut	1,600 SF
6	The Joint Chiropractic	1,600 SF
7	At Lease	1,600 SF
8	LG Nail & Spa	1,600 SF
9	Hear USA/HEARX	1,600 SF
10	Smile Design Largo	1,600 SF
11	Five Below	8,506 SF
12	Dollar Tree	10,000 SF
13	Petco	12,000 SF
14	J Lee Salon Suites	10,000 SF
15	Ross Dress for Less	24,895 SF

SUITE	TENANT NAME	SPACE SIZE
16	Burlington	30,302 SF
17	LA Fitness	33,490 SF
18	Siam Tampa	2,400 SF
19	HT Computers	1,200 SF
20	Ultimate Nail Spa	1,200 SF
21	Spectrum	4,800 SF
22	Chilli's	6,522 SF
23	Subway	1,600 SF
24	First Watch Daytime Cafe	3,480 SF
25	Boustian	2,000 SF
26	Naples Wax Center	1,600 SF
27	Chipotle	2,400 SF
28	Applebee's	5,119 SF
29	Wendy's	2,590 SF



**ERIC BATTISTONE**  
eric.battistone@tscg.com  
813.547.6804

**JEREMY KRAL**  
jeremy.kral@tscg.com  
813.547.6804

**NICK ANTHONY**  
nick.anthony@tscg.com  
813.373.4810

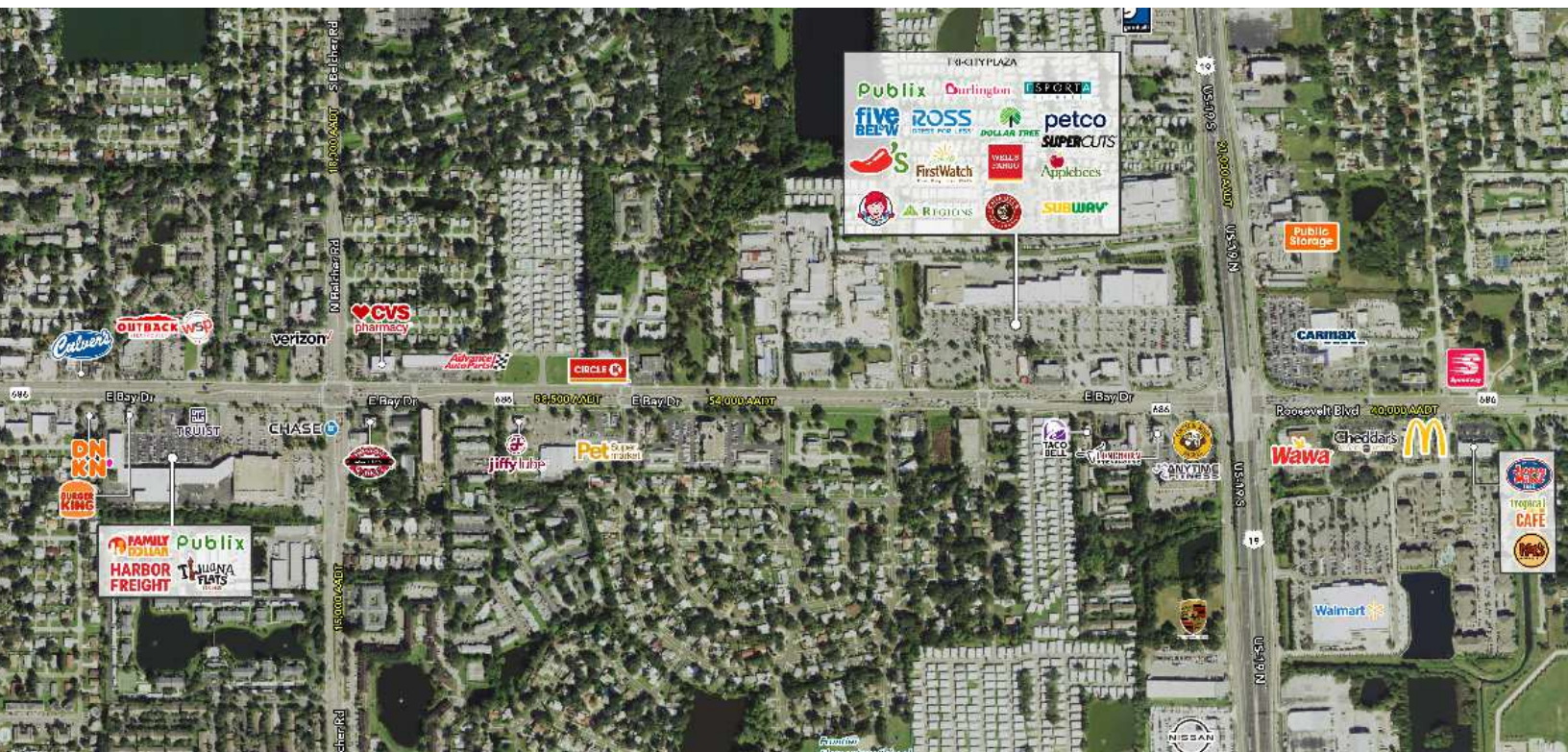




# TRI-CITY PLAZA

5220 E BAY DR., LARGO, FL 33764

# FOR LEASE



**ERIC BATTISTONE**  
eric.battistone@tscg.com  
813.547.6804

**JEREMY KRAL**  
jeremy.kral@tscg.com  
813.547.6804

**NICK ANTHONY**  
nick.anthony@tscg.com  
813.373.4810

