

PROPERTY FOR LEASE

**50731 Wing Drive**  
Shelby Township, MI 48315

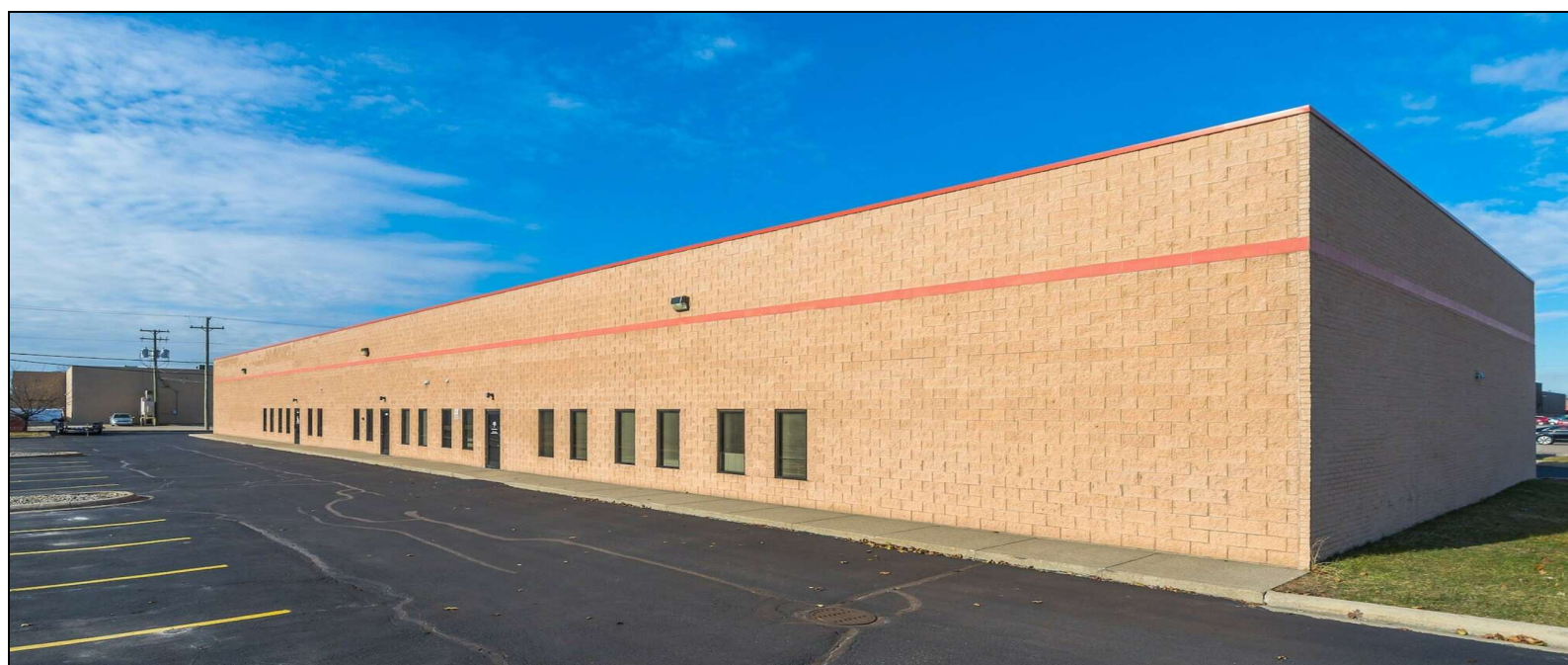


**L. MASON CAPITANI**

CORFAC INTERNATIONAL

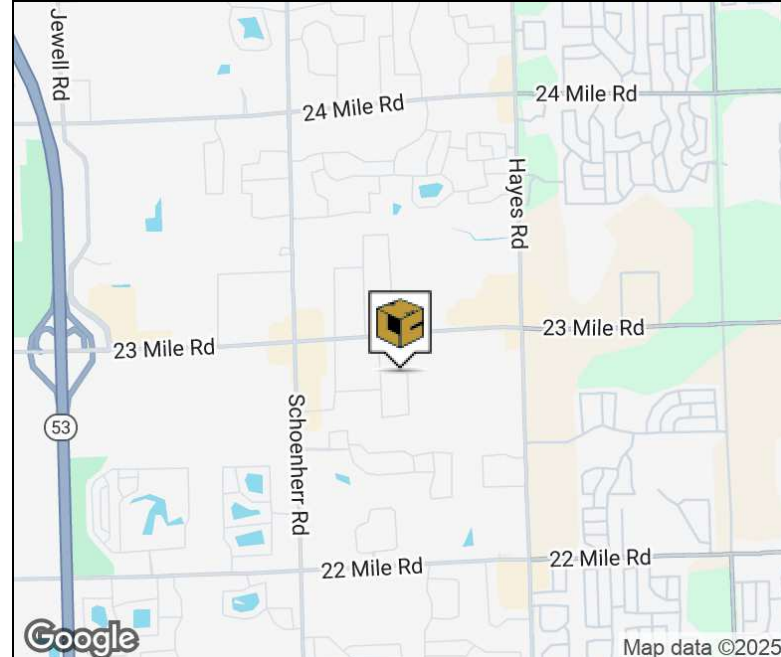
CELEBRATING 60 YEARS

## PROPERTY SUMMARY



### Property Highlights

- 4,960 Sq Ft Available With 670 Sq Ft Of Office
- Corner Unit With (2) 12'x14' Grade Doors
- Nicely Finished Offices With Clean Shop Area
- Shop Area Contains Floor Drains
- Ample Parking
- Excellent Location



### FOR MORE INFORMATION:

**Joe DePonio III, SIOR**

Senior Vice President

248.637.3513

jdeponio@LMCap.com



CONNECT WITH US

**248.637.9700 | [www.LMCap.com](http://www.LMCap.com)**

Information contained herein was obtained from sources deemed to be reliable but is not guaranteed. Subjects to prior sales, changes of price or withdrawal.

PROPERTY FOR LEASE

# 50731 Wing Drive

Shelby Township, MI 48315



L. MASON CAPITANI

CORFAC INTERNATIONAL

CELEBRATING 60 YEARS

## INDUSTRIAL PROPERTY DETAILS

Lease Rate	<b>\$12.00 SF/yr Gross</b>
Monthly Rate	<b>\$4,960/Month</b>

### Location Information

Street Address	50731 Wing Drive
City, State, Zip	Shelby Township, MI 48315
County	Macomb
Side of Street	West
Nearest Highway	M-53

### Property Information

Property Type	Industrial
Zoning	IND
Property Subtype	Manufacturing
Lot Size	1.041 Acres
Site Description	Located on E side of Schoenherr S of 23 Mile

### Building Information

Building Size	13,020 SF
Available SF	4,960 SF
Factory SF	4,290 SF
Office Space	670 SF
Year Built	1994
Year Last Renovated	2022
Tenancy	Multiple
Number of Grade Level Doors	(2) 12'x14'
Bay Size	60 ft
Ceiling Height	17 ft
Minimum Ceiling Height	17 ft
Power Description	240V   200 Amps
Number of Parking Spaces	12
Heating	Gas Forced Air
A/C	Office Only
Restrooms	2
Lighting	LED

### FOR MORE INFORMATION:

#### Joe DePonio III, SIOR

Senior Vice President

248.637.3513

jdeponio@LMCap.com



CONNECT WITH US

**248.637.9700 | www.LMCap.com**

Information contained herein was obtained from sources deemed to be reliable but is not guaranteed. Subjects to prior sales, changes of price or withdrawal.

PROPERTY FOR LEASE

**50731 Wing Drive**  
Shelby Township, MI 48315

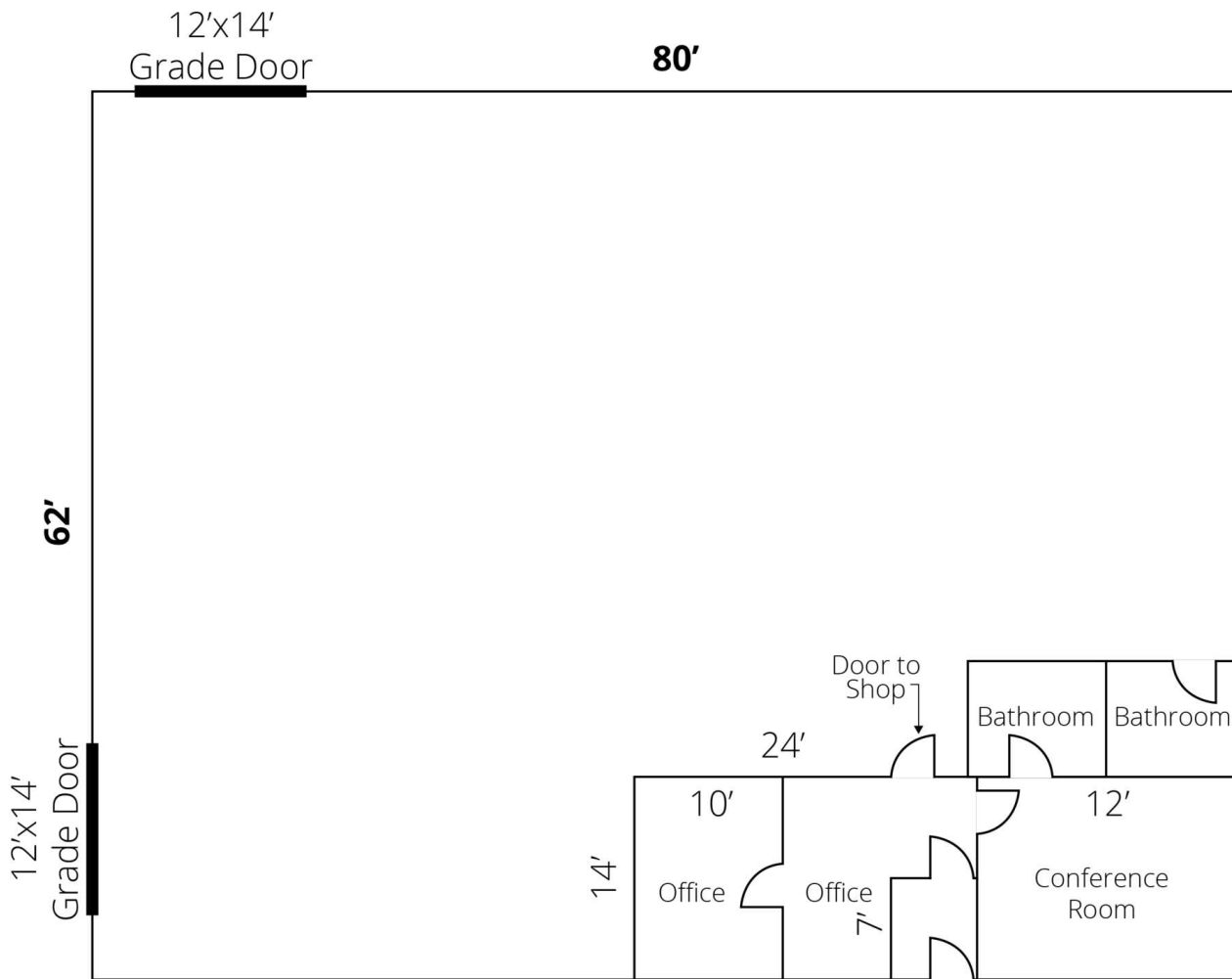


**L. MASON CAPITANI**

CORFAC INTERNATIONAL

CELEBRATING 60 YEARS

## FLOOR PLAN



**50731 Wing Drive**

### FOR MORE INFORMATION:

**Joe DePonio III, SIOR**

Senior Vice President

248.637.3513

jdeponio@LMCap.com



CONNECT WITH US

**248.637.9700 | www.LMCap.com**

Information contained herein was obtained from sources deemed to be reliable but is not guaranteed. Subjects to prior sales, changes of price or withdrawal.



PROPERTY FOR LEASE

**50731 Wing Drive**  
Shelby Township, MI 48315



**L. MASON CAPITANI**

CORFAC INTERNATIONAL

CELEBRATING 60 YEARS

## ADDITIONAL PHOTOS



### FOR MORE INFORMATION:

**Joe DePonio III, SIOR**

Senior Vice President

248.637.3513

jdeponio@LMCap.com



CONNECT WITH US

**248.637.9700 | www.LMCap.com**

Information contained herein was obtained from sources deemed to be reliable but is not guaranteed. Subjects to prior sales, changes of price or withdrawal.



PROPERTY FOR LEASE

**50731 Wing Drive**  
Shelby Township, MI 48315

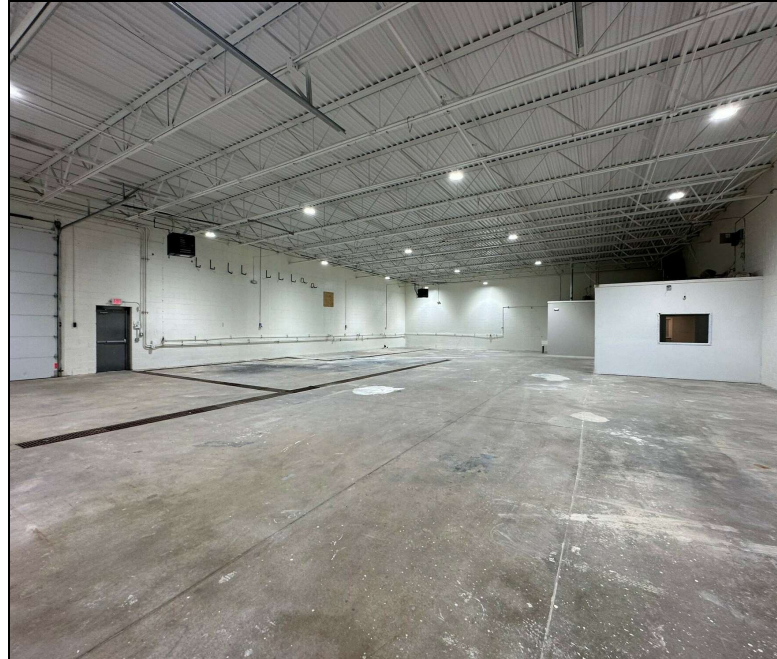
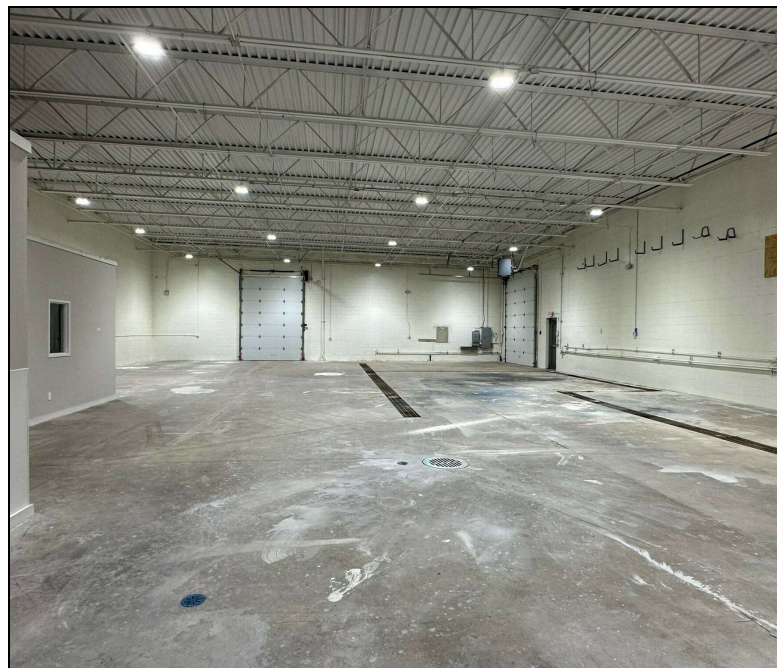


**L. MASON CAPITANI**

CORFAC INTERNATIONAL

CELEBRATING 60 YEARS

## ADDITIONAL PHOTOS



### FOR MORE INFORMATION:

**Joe DePonio III, SIOR**

Senior Vice President

248.637.3513

jdeponio@LMCap.com



CONNECT WITH US

**248.637.9700 | [www.LMCap.com](http://www.LMCap.com)**

Information contained herein was obtained from sources deemed to be reliable but is not guaranteed. Subjects to prior sales, changes of price or withdrawal.



PROPERTY FOR LEASE

**50731 Wing Drive**  
Shelby Township, MI 48315

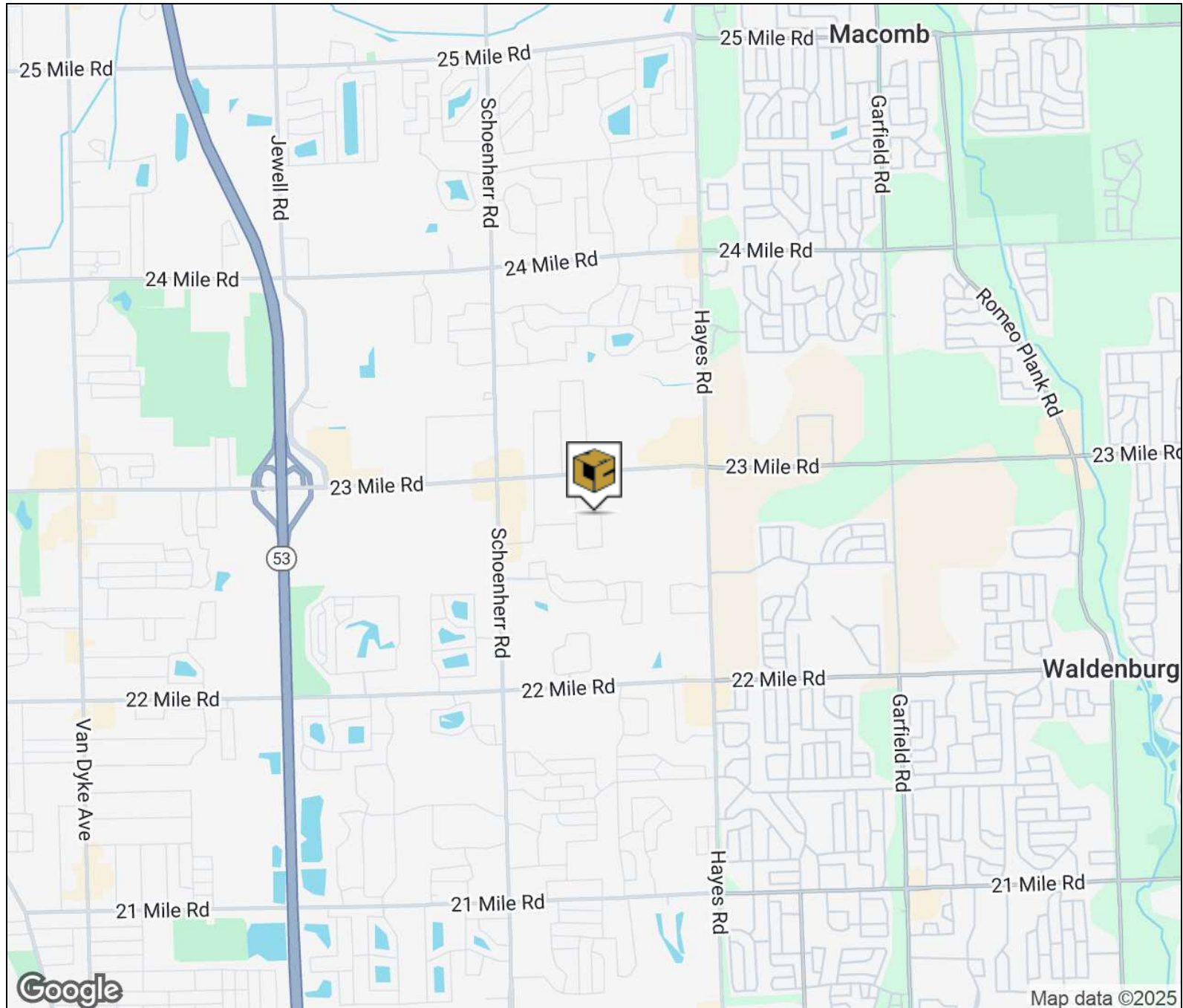


**L. MASON CAPITANI**

CORFAC INTERNATIONAL

CELEBRATING 60 YEARS

## LOCATION MAP



### FOR MORE INFORMATION:

**Joe DePonio III, SIOR**

Senior Vice President

248.637.3513

jdeponio@LMCap.com



CONNECT WITH US

**248.637.9700 | [www.LMCap.com](http://www.LMCap.com)**

Information contained herein was obtained from sources deemed to be reliable but is not guaranteed. Subjects to prior sales, changes of price or withdrawal.