

FOR LEASE

7620 N Hartman Lane Tucson, AZ 85743

Continental Commerce Park – Flex Space Available for Lease



For current availability and leasing information, please contact:

520-770-9221

- Space from 1,814 to 17,754 Sq Ft
- Call Broker for pricing
- Year Built: 2000-2007
- Grade door 10' x 10'
- 12' clear heights
- Zoned for industrial and commercial uses
- Easy access to Interstate 10 & major arterial roads
- Close proximity to shopping, dining, and services
- Professional on-site property management
- Continental Commerce Park presents an ideal opportunity for companies seeking quality flex space in the thriving Marana market.



Located in the dynamic growth corridor of Marana, Arizona.

Near the intersection of Cortaro Road and Interstate 10

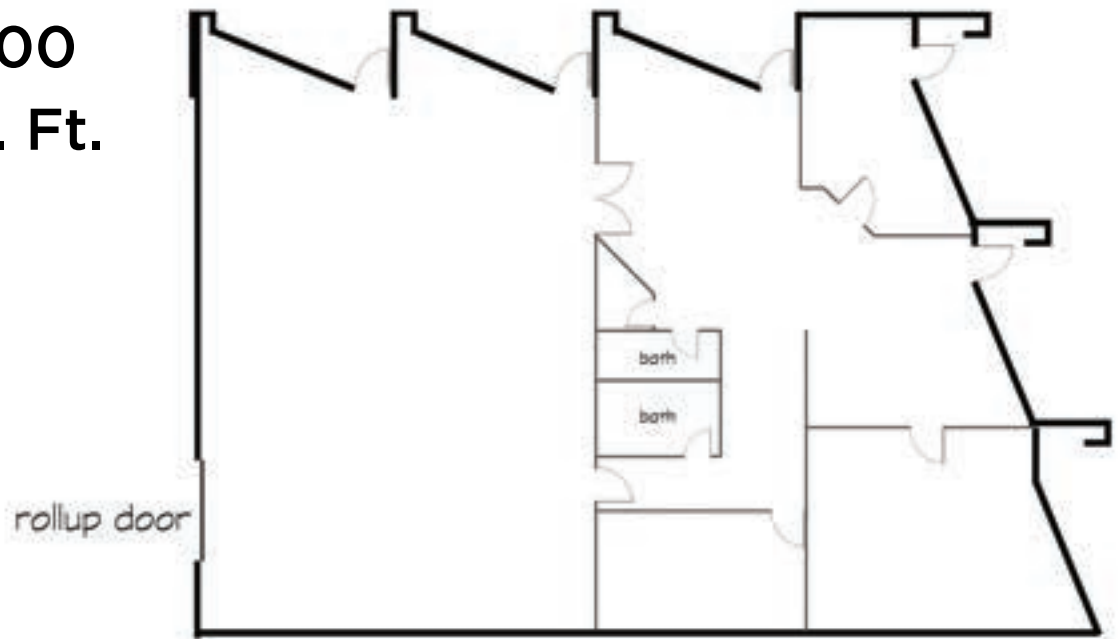


**Commercial Real Estate Group
of Tucson LLC**
Your Trusted Adviser

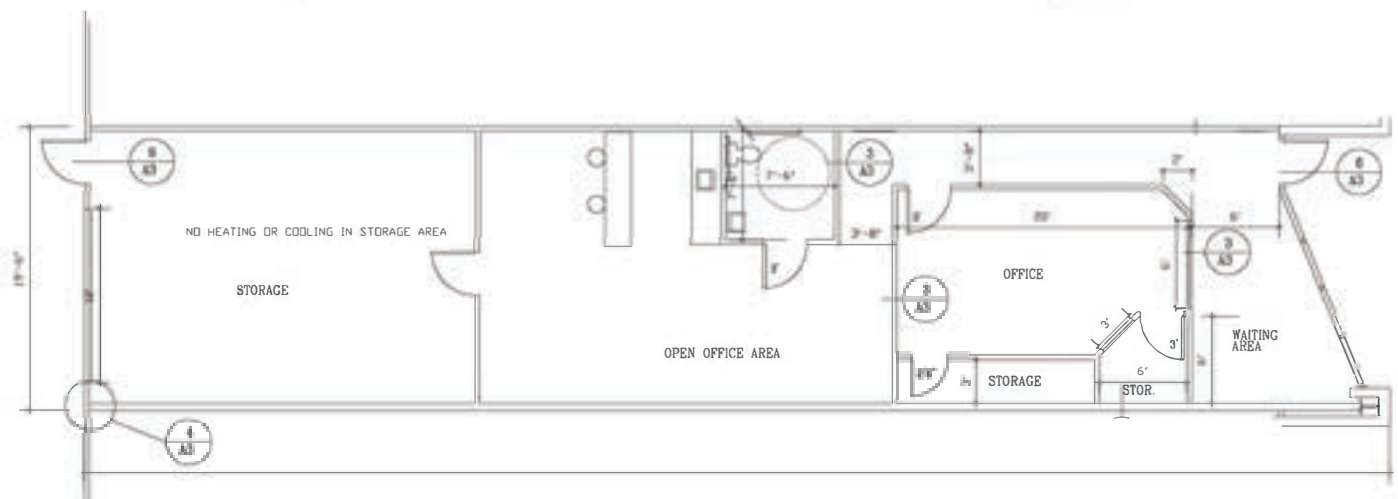
WWW.CRETUCSON.COM • PHONE: 520.299.3400 • EMAIL: Michael@cretucson.com

All information about the property is subject to changes without notice and is provided without a warranty. The property listings may be subject to errors, omissions, changes in price, prior sale, or withdrawal without notice. It is also to be noted that the property's availability is subject to prior leasing or other disposition.

Suites 100 5,120 Sq. Ft.



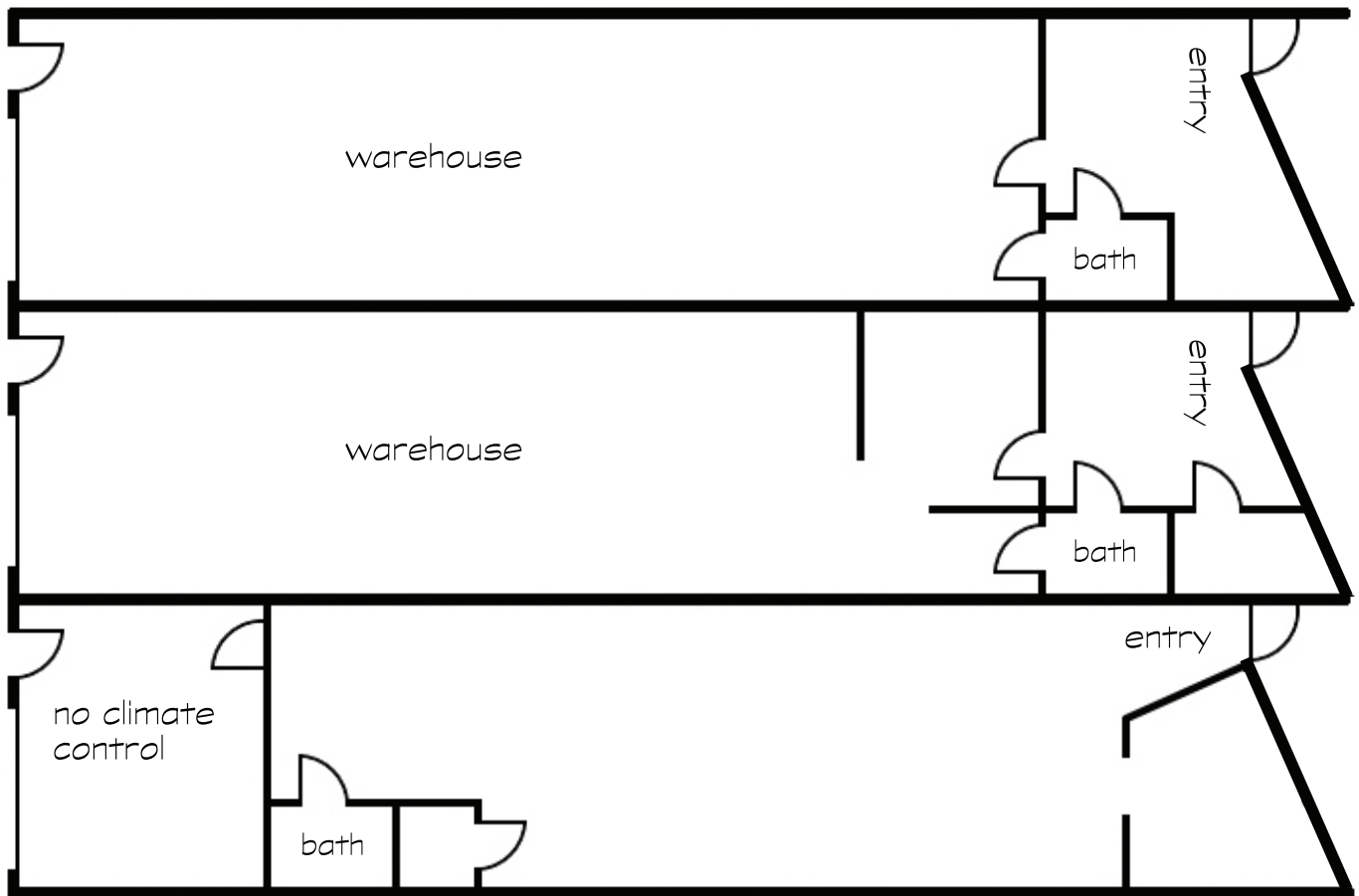
Suite 120 1,814 Sq. Ft.



Suites 112, 114 and 116

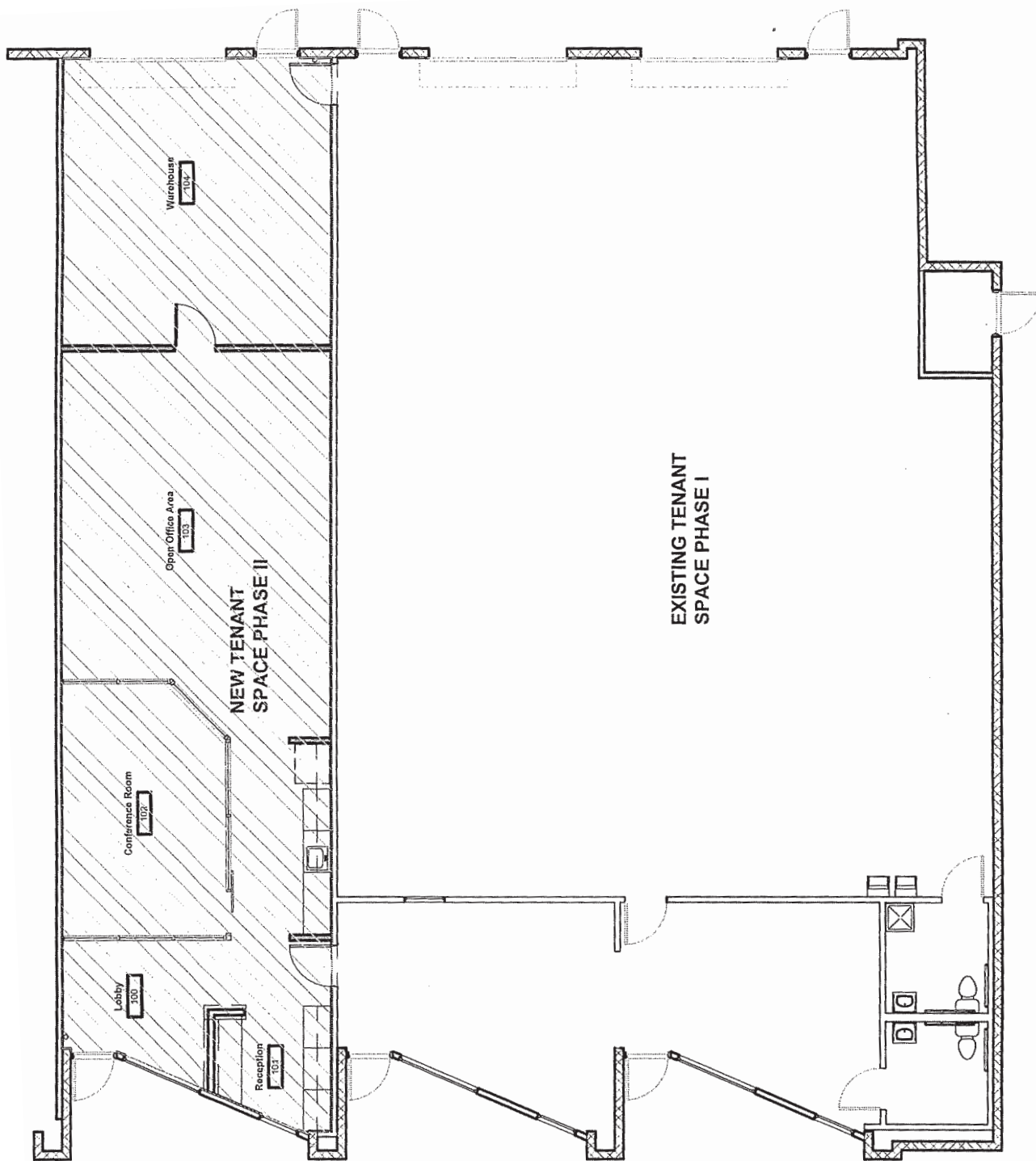
(combined space)

5,442 Sq. Ft



Suites 132

5,382 Sq. Ft.



EXISTING OVERALL FLOOR PLAN