



VACANT LAND FOR SALE

VACANT LAND FOR SALE | FARM ROAD 148, REPUBLIC, MO 65802

- 75.05± acres located near Amazon's new distribution warehouse
- Easy access to surrounding highways
- Located in area of rapid growth
- Nearby future developments in the works
- PRICE REDUCED

EST. 1909

2225 S. Blackman Road
Springfield, MO 65809
417.881.0600
rbmurray.com

Ross Murray, SIOR, CCIM
417.881.0600
ross@rbmurray.com

R.B. MURRAY COMPANY
SINCE 1909
COMMERCIAL & INDUSTRIAL REAL ESTATE

VACANT LAND
FOR SALE

FARM ROAD 148, REPUBLIC, MO 65802
VACANT LAND FOR SALE



Executive Summary



PROPERTY SUMMARY

Sale Price: \$750,500

Taxes: \$235.88 (2025)

Lot Size: 75.05 Acres

Zoning: A-1

The information listed above has been obtained from sources we believe to be reliable; however, we accept no responsibility for its accuracy.

Ross Murray, SIOR, CCIM | 417.881.0600 | ross@rbmurray.com
2225 S. Blackman Road | Springfield, MO 65809 | 417.881.0600

PROPERTY OVERVIEW

Now available for sale, this 75.05± acre site is conveniently located between Springfield and Republic. The property has easy access James River Freeway, I-44, Highway 60, and State Hwy MM. With Amazon's new distribution warehouse situated to the southwest of the property, this area is undergoing rapid growth with future developments in the works. Contact listing agent for more information. PRICE REDUCED.

PROPERTY HIGHLIGHTS

- Located near new Amazon distribution warehouse, ROI, Lew's, Red Monkey Foods, and Convoy of Hope
- Easy access to James River Freeway, I-44, Highway 60, and State Hwy MM
- Electricity Available
- Water, Gas, and Sewer located to the west
- PRICE REDUCED



1.5 billion being invested in the area between Republic and James River Freeway/Springfield between now and 2025.

Developments over last three years and current developments

1. Convoy of Hope World Headquarters - \$37M - 650 employees – completed October 2023
2. Amazon Fulfillment Center - \$150M – 1,800 employees
3. Red Monkey Expansion - \$10M - 100 additional employees - 400 overall
4. McClane Expansion - \$10M – 100 additional employees
5. Roi Mercy - \$7M – 90 additional employees
6. Lew's - \$7M – 85 additional employees
7. Iron Grain mixed-use development \$65M – under construction – Spring 2024 – across from Amazon
8. Stone Creek Falls – mixed-use development - \$350M – 1,320 residential units, 5 commercial lots w/ access to US 60 & MM expansion
9. Wilson's Valley – Stu Stenger Development - \$50M, 145 Single Family, 270 Multi-Family, Commercial Units – 4 commercial lots with 5 acres of commercial frontage. Approved by City and ready for permit issuance
10. Retail Food - Andy's, Popeye's, Culvers, and Whataburger
11. Great Escapes Brewery \$4M investment to a retail and distribution center located on Highway 60

Residential Only

12 New Active Subdivisions. Approximately 1200 approved single family lots to be built and 2500 multi-family units approved through zoning. Residential permits have increased approximately 25% year over year for the last 3 years.

Investment into Infrastructure

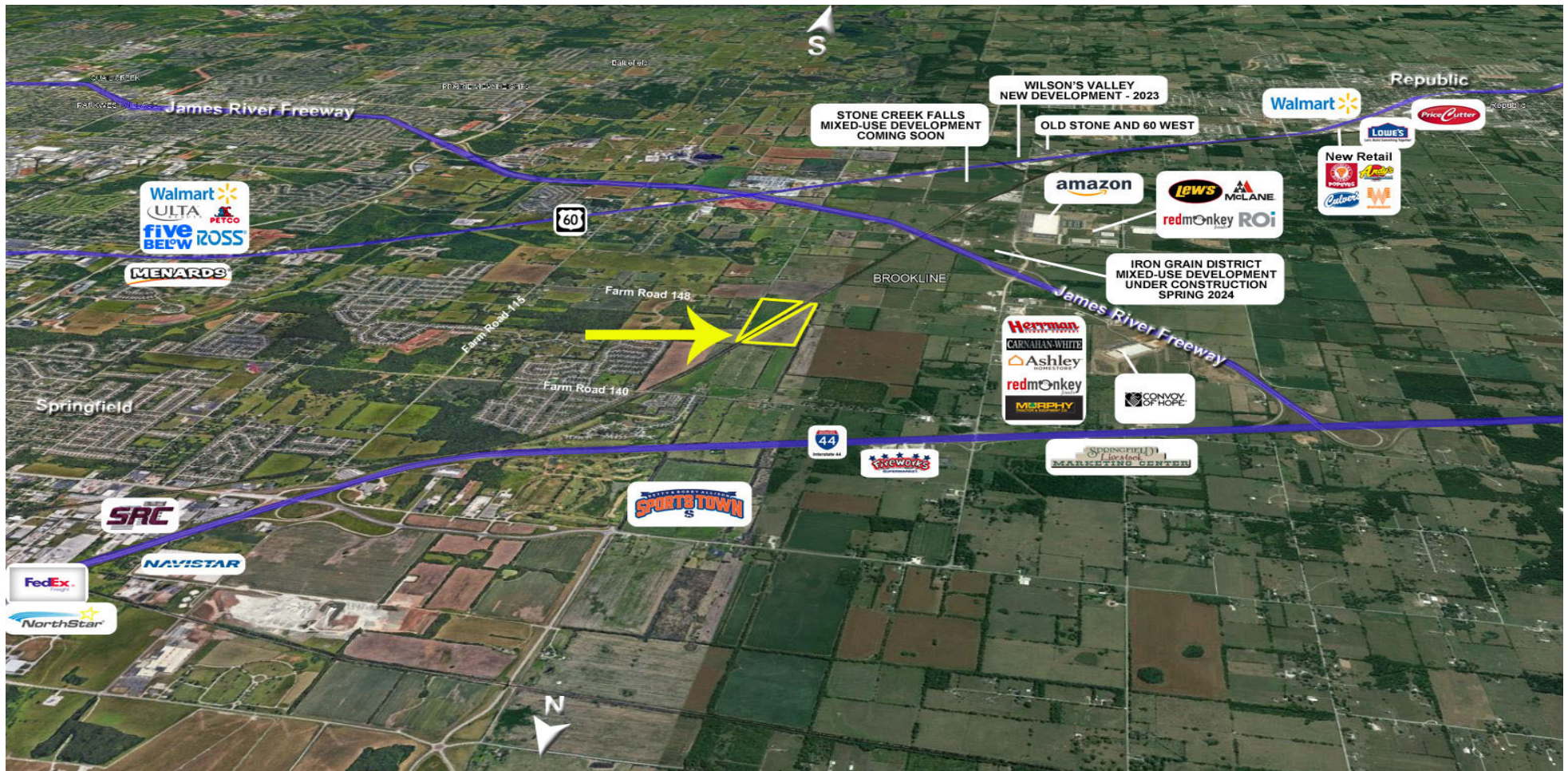
1. \$12.5M to 5 Lane MM Highway From I-44 to James River
2. \$35M to realign MM from Amazon South to Highway 60 with a new signalized intersection at Farm Road 103. This intersection will see AM and PM peaks of close to 60k cars a day
3. \$16M to 6 lane Highway 60 from the intersection above toward Springfield and James River Freeway
4. \$2.5M to improve the interchange at I-44 and MM
5. City investing \$100M into additional capacity of water and wastewater systems to facilitate further growth and development
6. City Investing \$20M into a sports mega-plex on 136 acres near 60 and MM. This facility will have 9-10 baseball/softball fields and 8 soccer fields
7. City investing \$10M into expansion of the regional aquatics center - 60,000 patrons annually

VACANT LAND
FOR SALE

FARM ROAD 148, REPUBLIC, MO 65802
VACANT LAND FOR SALE



Aerial - Looking South



VACANT LAND
FOR SALE

FARM ROAD 148, REPUBLIC, MO 65802
VACANT LAND FOR SALE



Aerial - Looking North



Ross Murray, SIOR, CCIM | 417.881.0600 | ross@rbmurray.com
2225 S. Blackman Road | Springfield, MO 65809 | 417.881.0600

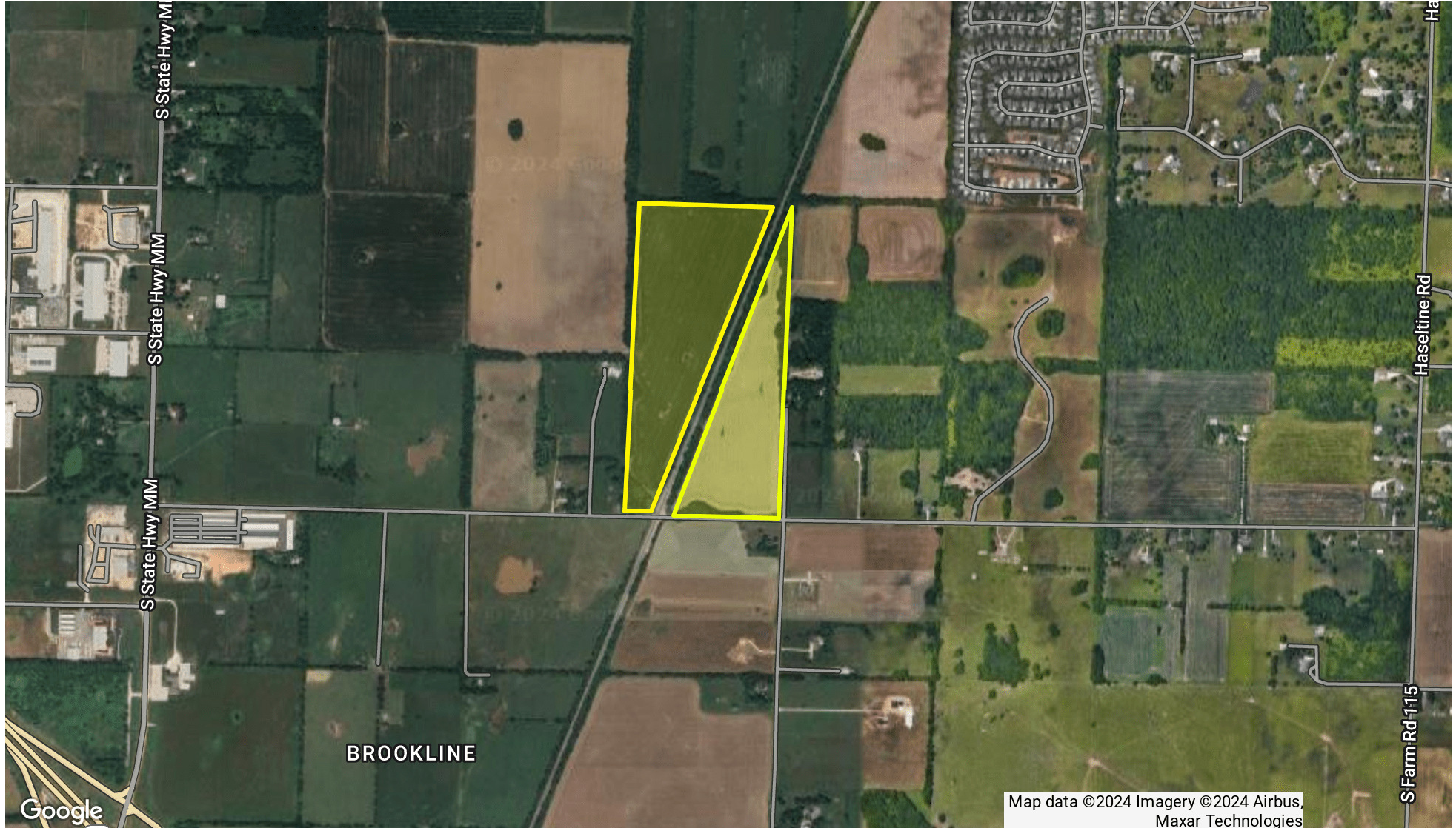
R.B. | MURRAY COMPANY
COMMERCIAL & INDUSTRIAL REAL ESTATE

VACANT LAND
FOR SALE

FARM ROAD 148, REPUBLIC, MO 65802
VACANT LAND FOR SALE



Aerial



Ross Murray, SIOR, CCIM | 417.881.0600 | ross@rbmurray.com
2225 S. Blackman Road | Springfield, MO 65809 | 417.881.0600

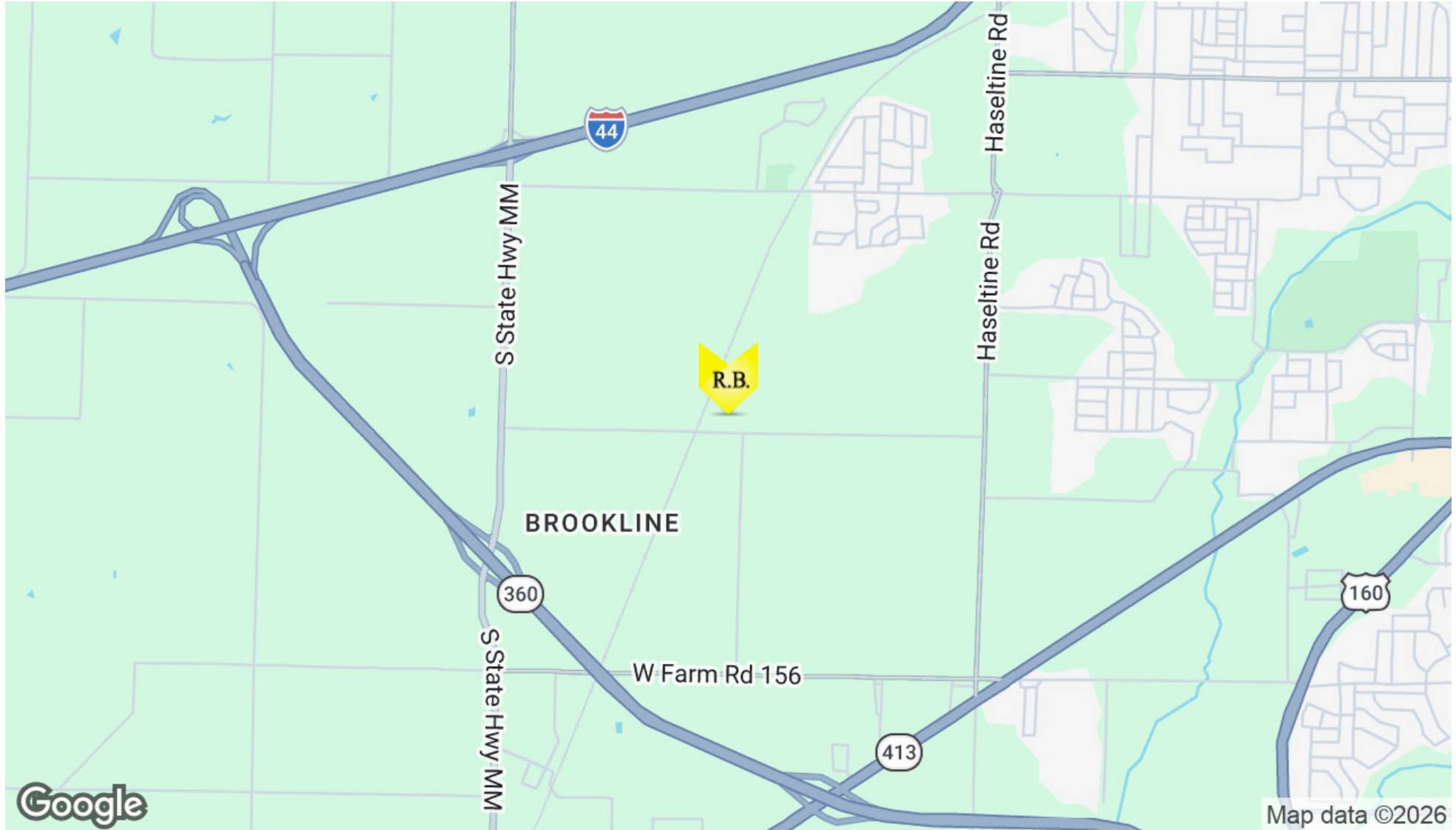
R.B. | MURRAY COMPANY
COMMERCIAL & INDUSTRIAL REAL ESTATE

VACANT LAND
FOR SALE

FARM ROAD 148, REPUBLIC, MO 65802
VACANT LAND FOR SALE



Location Map



Ross Murray, SIOR, CCIM | 417.881.0600 | ross@rbmurray.com
2225 S. Blackman Road | Springfield, MO 65809 | 417.881.0600

R.B. | MURRAY COMPANY
COMMERCIAL & INDUSTRIAL REAL ESTATE

VACANT LAND
FOR SALE

FARM ROAD 148, REPUBLIC, MO 65802
VACANT LAND FOR SALE

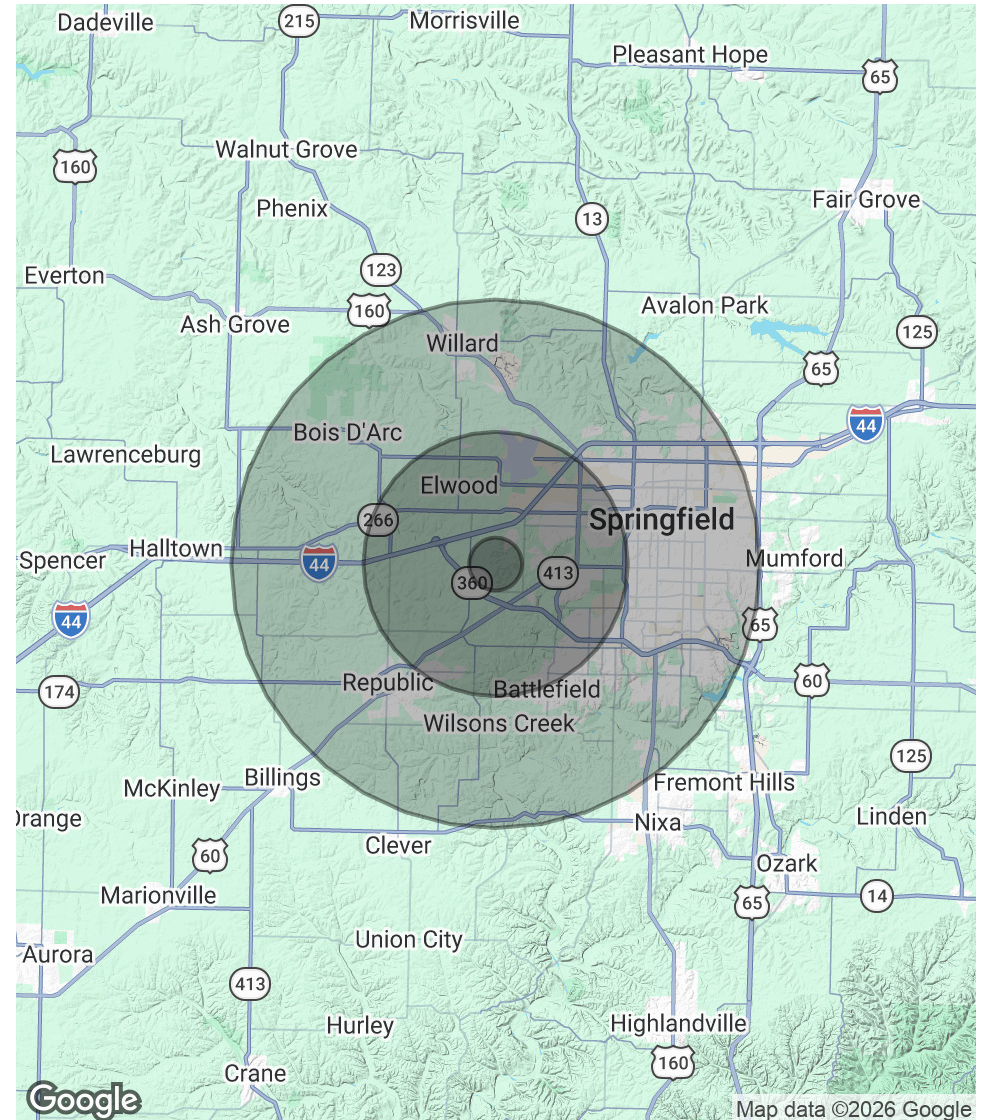


Demographics Map & Report

POPULATION	1 MILE	5 MILES	10 MILES
Total Population	212	20,984	170,089
Average Age	42.6	34.4	36.7
Average Age (Male)	40.4	33.4	35.6
Average Age (Female)	42.7	34.8	38.1

HOUSEHOLDS & INCOME	1 MILE	5 MILES	10 MILES
Total Households	79	8,835	77,241
# of Persons per HH	2.7	2.4	2.2
Average HH Income	\$94,258	\$65,822	\$57,754
Average House Value	\$222,640	\$145,661	\$128,862

2020 American Community Survey (ACS)



VACANT LAND
FOR SALE

FARM ROAD 148, REPUBLIC, MO 65802
VACANT LAND FOR SALE



Advisor Bio

ROSS MURRAY, SIOR, CCIM President



2225 S. Blackman Road
Springfield, MO 65809

T 417.881.0600
ross@rbmurray.com
MO #2004035357

Professional Background

Ross Murray is a third generation of the Murray family legacy. He studied at the University of Mississippi (Ole Miss) and graduated with distinction from Drury University, earning a degree in marketing and a minor in world studies. He earned designations with the Society of Industrial Realtors (SIOR) and Certified Commercial Investment Member (CCIM) through graduate-level training, high sales and lease volumes, and a demonstration of professionalism and ethics only showcased by the top industry experts. Ross is the only broker in Southwest Missouri (besides his brother Ryan Murray) to hold both SIOR Dual Industrial and Office designations and CCIM designations. Ross is a SIOR 10+ Year Legacy member with over 20 years of experience and real estate knowledge. He specializes in investment sales, industrial sales and leasing, office sales and leasing, and vacant land sales and leasing. His wealth of expertise makes him a trusted, strategic real estate partner.

Significant Transactions

Over the past seven years, Ross has brokered many significant investment, industrial, and office transactions, totaling over \$300,000,000 and over 5,500,000 square feet. His notable transactions include:

- JPMC CHASE Campus (300,000 Sq Ft)
- Town & Country Shopping Plaza (120,000 Sq Ft)
- National FedEx facility (BTS)
- Super Center Plaza Shopping Center (40,000 Sq Ft)
- Regional Headquarters Campus for Wellpoint Blue Cross Blue Shield (100,000 Sq Ft)
- University of Phoenix Regional Campus (40,000 Sq Ft)
- French Quarter Plaza (60,000 Sq Ft)
- Recent industrial and office portfolio sales anchored by Blue Chip Tenants (550,000 Sq Ft)

His recent 2024 JPMC CHASE Campus transaction totaled 300,000 square feet. The transaction is the largest privately-held office transaction in Springfield's history to date.

Industry Recognition

Ross was an honoree for the Springfield Business Journal's 2014 "40 Under 40." He was selected for being one of Springfield's brightest and most accomplished business professionals. In 2021, the Springfield Business Journal recognized Ross as the local real estate industry's top Trusted Adviser.

Ross is consistently ranked as a Top Costar Power Broker in the state of Missouri. His current marketing projects include Project 60/65, a mixed-use development covering 600 acres in Southeast Springfield, and TerraGreen Office Park, one of the area's first sustainable LEED concept office developments. Additionally, he is brokering a new 166-acre industrial park, "Southwest Rail and Industrial Park," which is currently being developed. It contains approximately 1,500,000 to 2,000,000 square feet of new industrial buildings.

Commitment to Community

Ross exhibits his dedication to the community by donating his time to local charities and business groups. He is a board member of the Springfield Workshop Foundation, as well as the Springfield News-Leader's Economic Advisory Council, Springfield Executives Partnership, Hickory Hills Country Club, Springfield Area Chamber of Commerce, International Council of Shopping Centers, and Missouri Association of Realtors.

Memberships & Affiliations

Society of Industrial and Office Realtors (SIOR); Certified Commercial Investment Member (CCIM)