

2005 N COUNTRY CLUB DR

MONTGOMERY, AL 36106

Executive Summary



OFFERING SUMMARY

Sale Price:	\$1,241,100
Lot Size:	±0.53 Acres
Year Built:	1875
Building Size:	Building 1: ±25,940 SF Building 2: ±4,940 SF Building 3: ±4,110 SF
Zoning:	INST
Price / SF:	\$34.48

PROPERTY HIGHLIGHTS

- Former campus of the St. James School in Montgomery
- Post-Bellum home converted into beautiful reception center with meeting rooms
- Zoned INST (Institutional Zone)- Nearby businesses include a Senior Living Apartment Complex and a Skilled Nursing Facility
- 22 fully furnished classrooms
- Classroom furniture included but can be removed upon request
- Quiet cul-de-sac location
- Floors: concrete, hardwood, tile, & terrazzo
- Less than 1 mile from Jackson Hospital
- ± 0.5 miles from The Montgomery Country Club: Est. in 1903, MCC is an immaculate golf course, a par-72, 18-hole masterpiece designed by renowned architect Perry Maxwell. Stretching over 6,800 yards, this challenging course boasts meticulously manicured fairways and greens that provide a true test of skill for golfers of all levels.
- ± 1.3 miles from Alabama State University (ASU): With a 2023 student enrollment ± 5,875 of and ± 760 total employees. ASU is an accredited University and offers over 60 undergraduate and graduate degree programs.
- ± 1.5 miles from I-65

GENE CODY, CCIM

334.386.2441
gcody@mcrmpm.com

JON MASTERS, CCIM

334.387.2724
jmasters@mcrmpm.com

MOORE COMPANY REALTY

312 Catoma St #200, Montgomery, AL 36104
334.262.1958 | moorecompanyrealty.com



2005 N COUNTRY CLUB DR

MONTGOMERY, AL 36106

Additional Photos



GENE CODY, CCIM

334.386.2441
gcody@mcrmpm.com

JON MASTERS, CCIM

334.387.2724
jmasters@mcrmpm.com

MOORE COMPANY REALTY

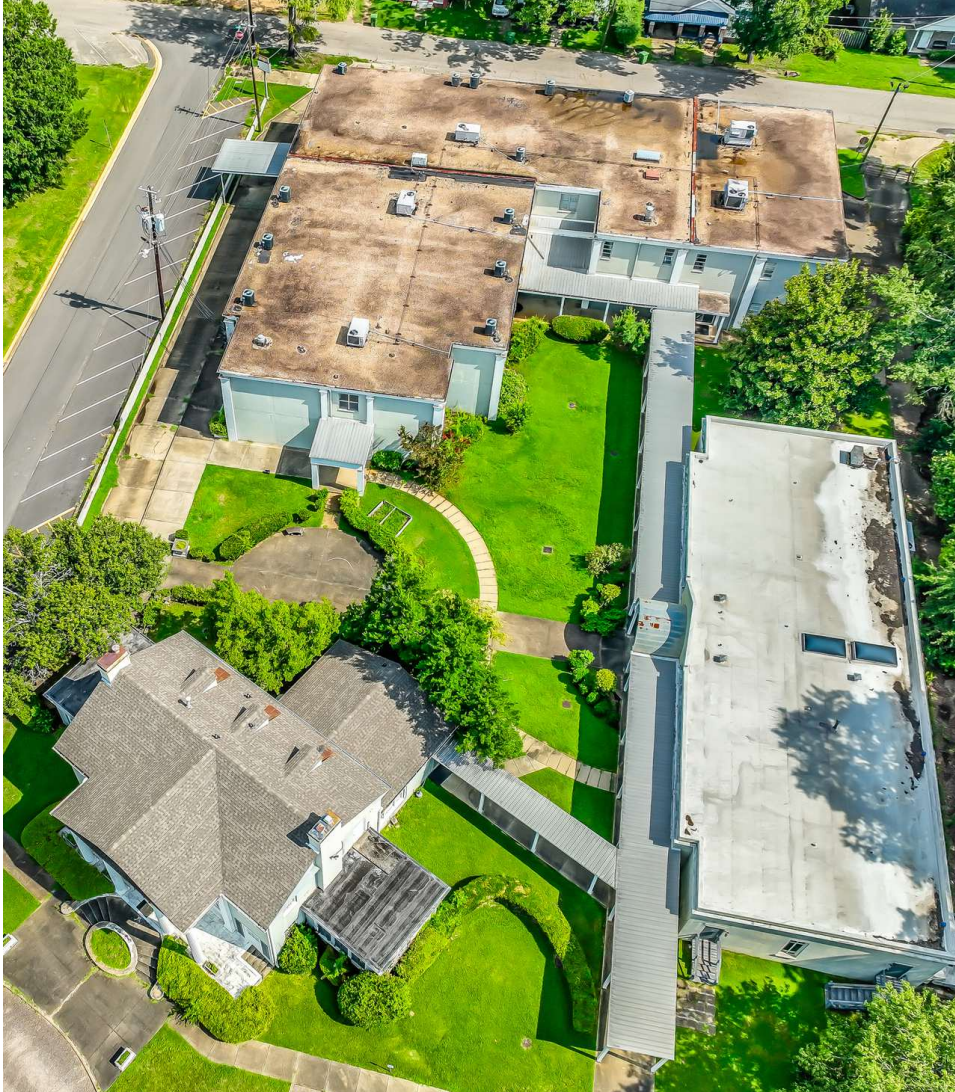
312 Catoma St #200, Montgomery, AL 36104
334.262.1958 | moorecompanyrealty.com



2005 N COUNTRY CLUB DR

MONTGOMERY, AL 36106

Additional Photos



GENE CODY, CCIM

334.386.2441
gcody@mcrmpm.com

JON MASTERS, CCIM

334.387.2724
jmasters@mcrmpm.com

MOORE COMPANY REALTY

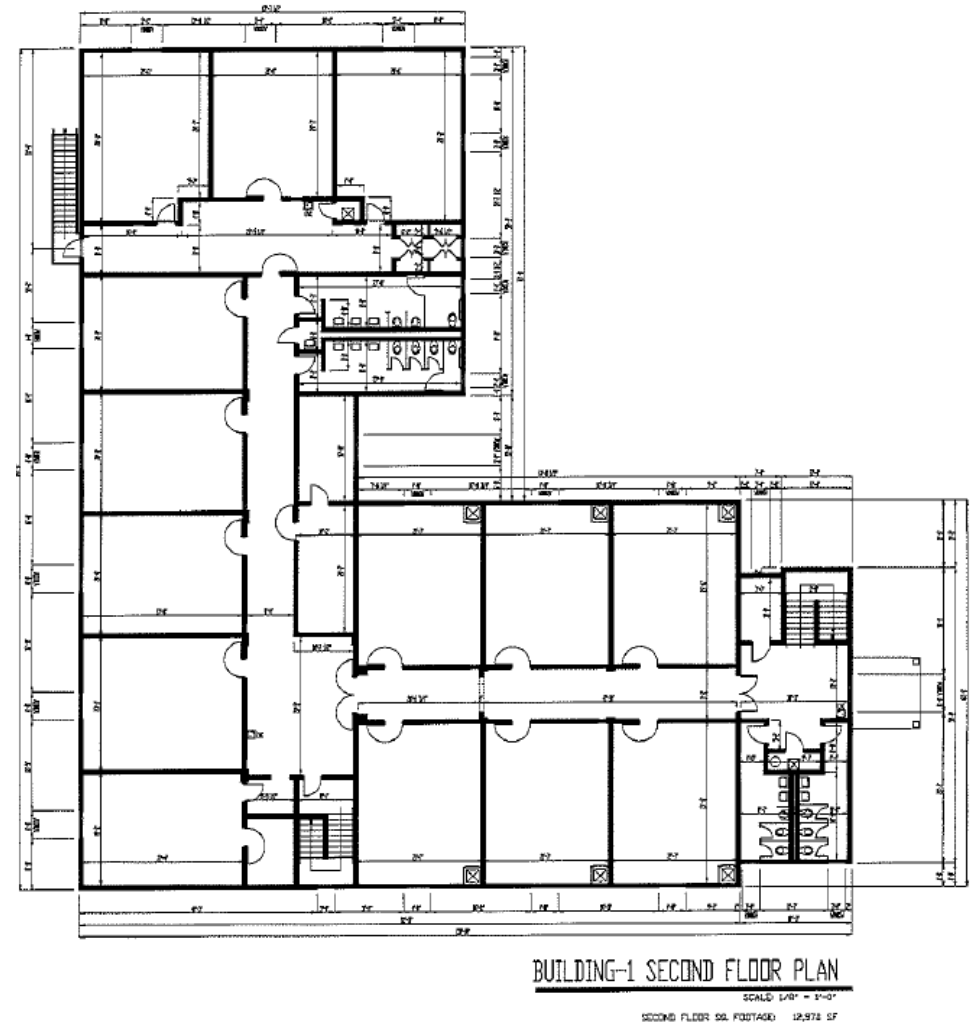
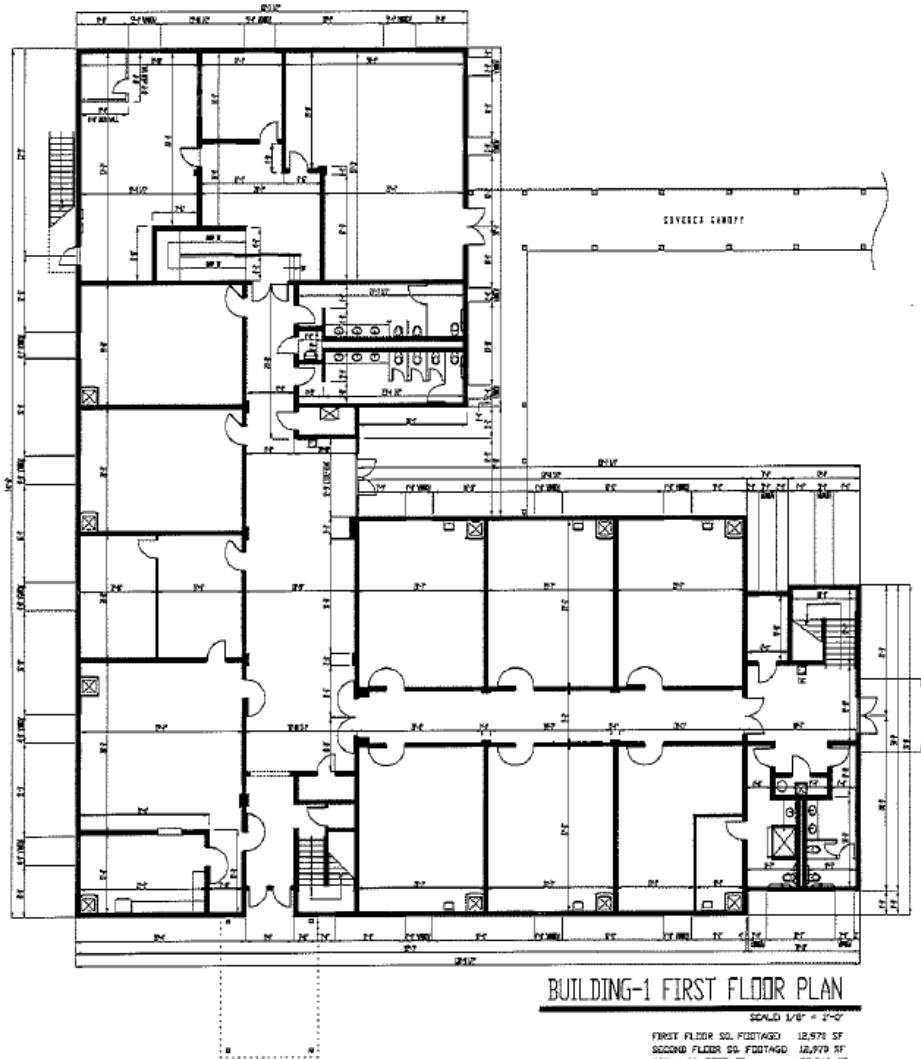
312 Catoma St #200, Montgomery, AL 36104
334.262.1958 | moorecompanyrealty.com



2005 N COUNTRY CLUB DR

MONTGOMERY, AL 36106

Floor Plans- Building 1



GENE CODY, CCIM

334.386.2441
gcody@mcrmpm.com

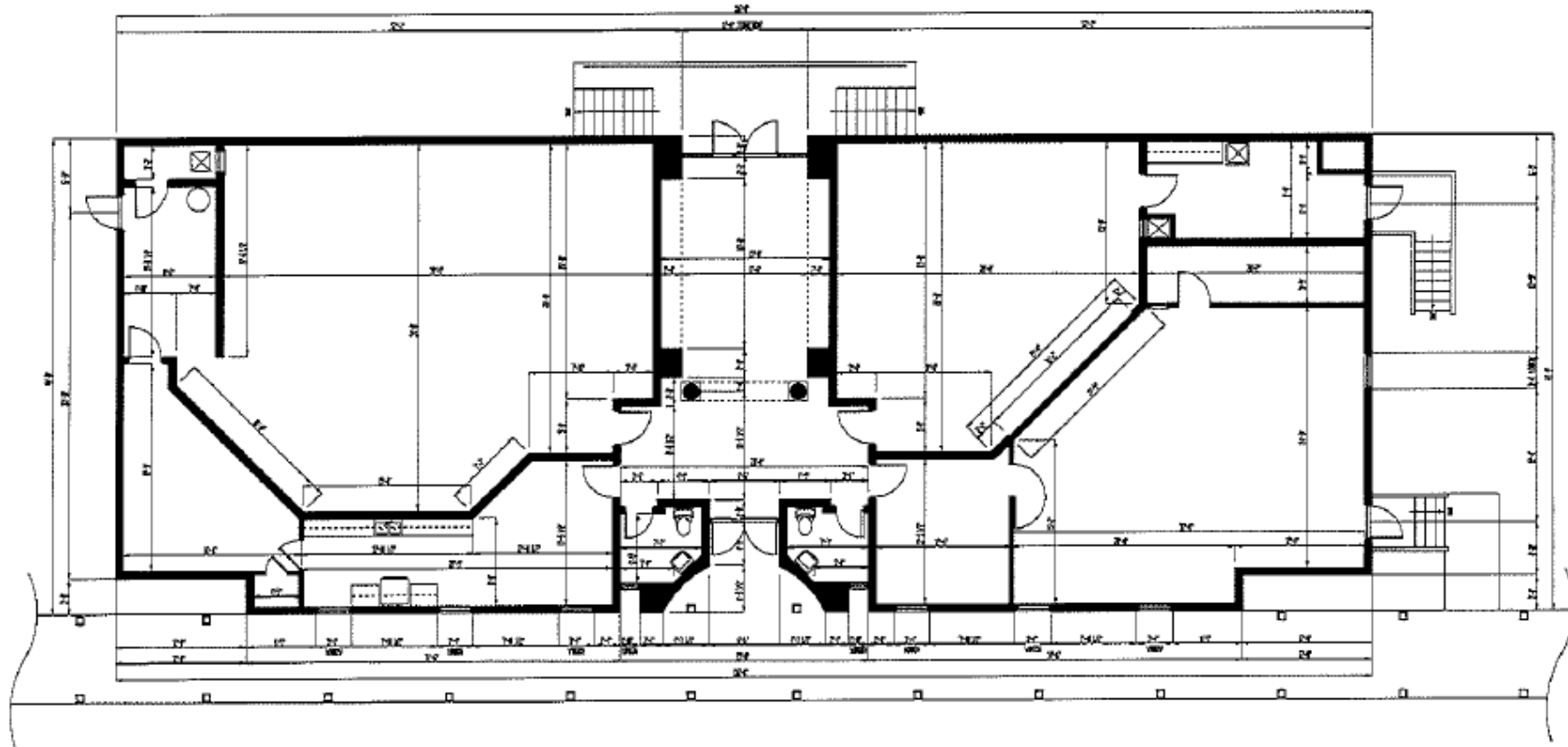
JON MASTERS, CCIM

334.387.2724
jmasters@mcrmpm.com

MOORE COMPANY REALTY

312 Catoma St #200, Montgomery, AL 36104
334.262.1958 | moorecompanyrealty.com





BUILDING-2 FLOOR PLAN

SCALE: 3/32" = 1'-0"

BUILDING 2 SQ. FOOTAGE 4,940 SF

GENE CODY, CCIM

334.386.2441
gcody@mcrmpm.com

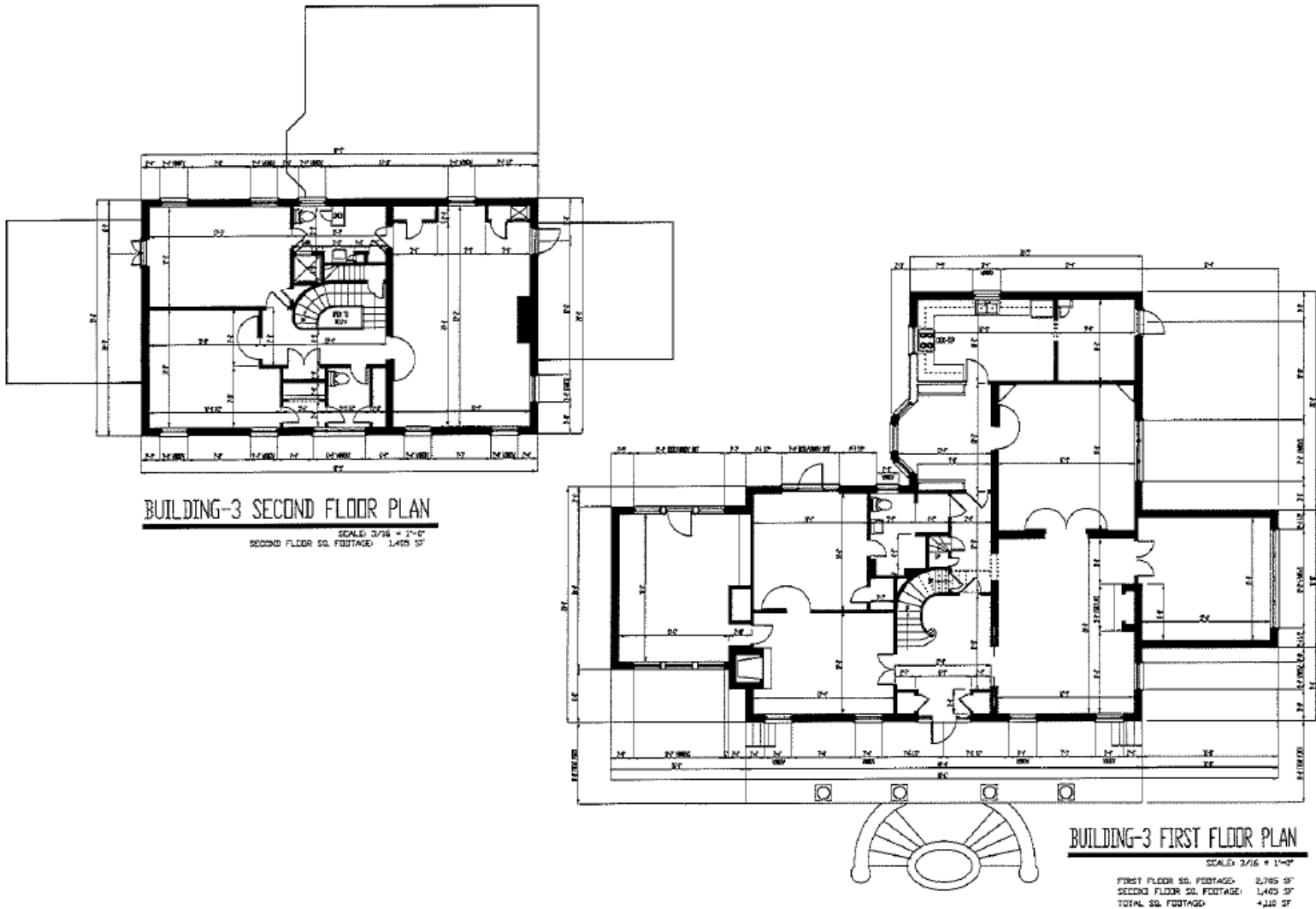
JON MASTERS, CCIM

334.387.2724
jmasters@mcrmpm.com

MOORE COMPANY REALTY

312 Catoma St #200, Montgomery, AL 36104
334.262.1958 | moorecompanyrealty.com





GENE CODY, CCIM

334.386.2441
gcody@mcrmpm.com

JON MASTERS, CCIM

334.387.2724
jmasters@mcrmpm.com

MOORE COMPANY REALTY

312 Catoma St #200, Montgomery, AL 36104
334.262.1958 | moorecompanyrealty.com



2005 N COUNTRY CLUB DR

MONTGOMERY, AL 36106

Demographics

DEMOGRAPHIC SUMMARY

2005 N Country Club Dr, Montgomery, Alabama, 36106

Ring of 3 miles

KEY FACTS

71,663

Population



29,645

Households

38.2

Median Age

\$42,195

Median Disposable Income

EDUCATION

12%

No High School Diploma



28%

High School Graduate



27%

Some College



33%

Bachelor's/Grad/Prof Degree

INCOME



\$51,572

Median Household Income



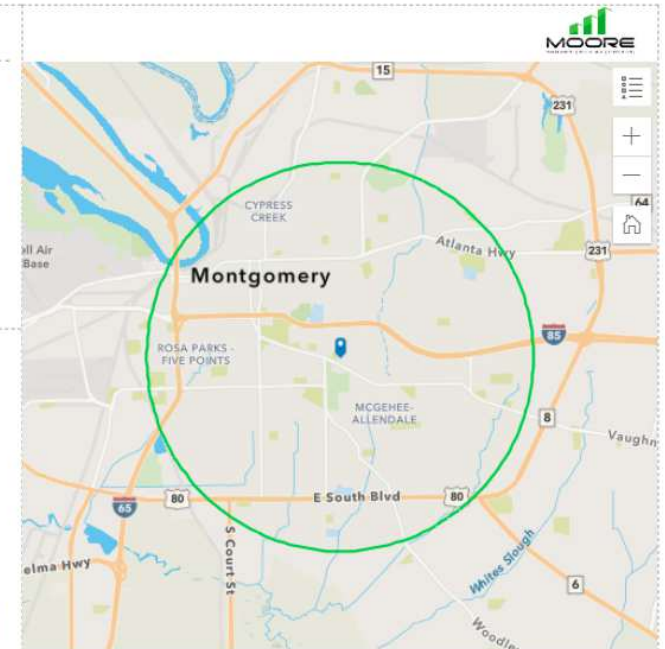
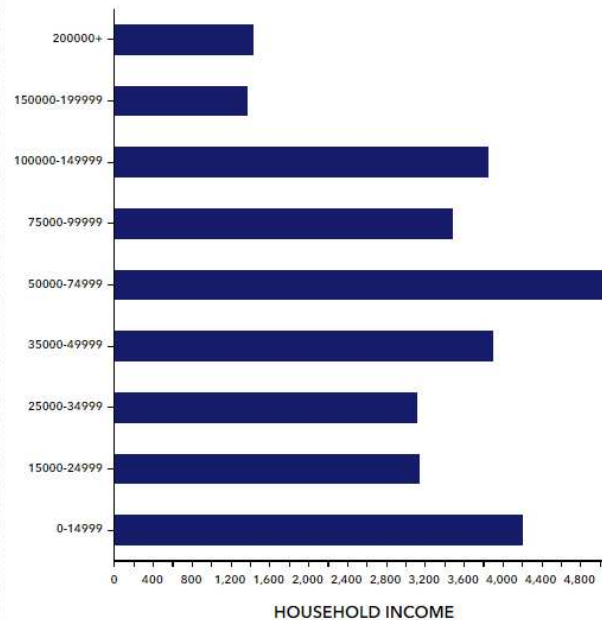
\$31,147

Per Capita Income



\$74,238

Median Net Worth



EMPLOYMENT



White Collar

60%



Blue Collar

24%



Services

20%

5.9%

Unemployment Rate

GENE CODY, CCIM

334.386.2441
gcody@mcrmpm.com

JON MASTERS, CCIM

334.387.2724
jmasters@mcrmpm.com

MOORE COMPANY REALTY

312 Catoma St #200, Montgomery, AL 36104
334.262.1958 | moorecompanyrealty.com



2005 N COUNTRY CLUB DR

MONTGOMERY, AL 36106

Retail Map



GENE CODY, CCIM

334.386.2441
gcody@mcrmpm.com

JON MASTERS, CCIM

334.387.2724
jmasters@mcrmpm.com

MOORE COMPANY REALTY

312 Catoma St #200, Montgomery, AL 36104
334.262.1958 | moorecompanyrealty.com

