

1,400 - 38,000 SF

NEW CONSTRUCTION/LAND/EXISTING RETAIL



BTS/GROUND LEASE/FOR LEASE



6913-6937 State Rd

Pittsfield Township, Michigan 48176

Property Description

NAI Farberman is pleased to announce the retail opportunity and new commercial and medical development within the condominium site of the Walmart Supercenter. Easily accessible through US-23 via Michigan Ave and I-94 via State Street, serving Pittsfield, Saline and Ann Arbor.

Located just east of downtown Saline. Surrounded by new home construction priced in the upper \$500k - \$1.3m with median household incomes of \$179,430 (1 Mile Radius). Strong residential community with schools and religious institutions alongside Saline Police and Municipal offices and major national/international employers, such as Faurecia Interiors Systems.

FOR LEASE:

1,400 SF inline unit
2,800 SF end cap unit

GROUND LEASE/BTS:

Lot OP01 2.48 ACRES State Rd
Lot OP02 0.92 ACRES State Rd

BTS FOR LEASE:

NEW 31,000 Sq. Ft. Multi-Tenant Buildings



Commercial Real Estate Services, Worldwide.

www.naifarberman.com

Carrie Weiss

Vice President | 248.351.6328
weiss@farberman.com

Wendy Acho

Leasing and Sales Associate | 248.563.0739
acho@farberman.com

NO WARRANTY, EXPRESS OR IMPLIED, IS MADE AS TO THE ACCURACY OF THE INFORMATION CONTAINED HEREIN. THIS INFORMATION IS SUBMITTED SUBJECT TO ERRORS, OMISSIONS, CHANGE OF PRICE, RENTAL OR OTHER CONDITIONS, WITHDRAWAL WITHOUT NOTICE, AND IS SUBJECT TO ANY SPECIAL LISTING CONDITIONS IMPOSED BY OUR PRINCIPALS, COOPERATING BROKERS, BUYERS, TENANTS AND OTHER PARTIES WHO RECEIVE THIS DOCUMENT SHOULD NOT RELY ON IT, BUT SHOULD USE IT AS A STARTING POINT OF ANALYSIS, AND SHOULD INDEPENDENTLY CONFIRM THE ACCURACY OF THE INFORMATION CONTAINED HEREIN THROUGH A DUE DILIGENCE REVIEW OF THE BOOKS, RECORDS, FILES AND DOCUMENTS THAT CONSTITUTE RELIABLE SOURCES OF THE INFORMATION DESCRIBED HEREIN. LOGOS ARE FOR IDENTIFICATION PURPOSES ONLY AND MAY BE TRADEMARKS OF THEIR RESPECTIVE COMPANIES. NAI Farberman, INC. CA BRE LIC. #01990696.

1,400 - 38,000 SF

NEW CONSTRUCTION/LAND/EXISTING RETAIL

BTS/GROUND LEASE/FOR LEASE



Proposed
Subject Property
31,000 SF



1,400 - 38,000 SF

NEW CONSTRUCTION/LAND/EXISTING RETAIL

BTS/GROUND LEASE/FOR LEASE



50th Anniversary
NOWAK & FRAUS ENGINEERS
 CIVIL ENGINEERS
 LAND SURVEYORS
 LAND PLANNERS

NOWAK & FRAUS ENGINEERS
 4077 WOODWARD AVE.
 FARMINGTON HILLS, MI 48334
 TEL: (248) 322-9911
 FAX: (248) 322-0237
 WWW.NOWAKFRAUS.COM

LANDSCAPE ARCHITECTURE

DATE: 12-21-2015
 SCALE: 1" = 30'

PROJECT: State Street Crossing

CLIENT: BIREB II LLC, c/o Commercial Properties Services LLC
 4250 Woodward Avenue, Suite 225
 Bloomfield Hills, MI 48304
 Contact: William Orlando
 PH: 248-454-1010

PROJECT LOCATION:
 Part of the West 1/4 of Section 25, T.35, R.0E
 Pinfield Township, Washtenaw County, Michigan

PROJECT: State Street Crossing
 SHEET: Landscape Plan

811
 Call before you dig
 Call before you dig

DATE	REVISION
12-21-2015	ISSUED FOR PERMIT
12-21-2015	ISSUED FOR PERMIT
12-21-2015	ISSUED FOR PERMIT

DESIGNED BY: G. Oskowski
 DRAWN BY: G. Oskowski
 APPROVED BY: G. Oskowski
 DATE: 12-21-2015
 SCALE: 1" = 30'
 SHEET NO: K12
 OF: C9

PLANT SCHEDULE

NO.	QTY	DESCRIPTION	SIZE	PRICE	TOTAL	REMARKS
101	10	Red Maple	4" DIA.	50.00	500.00	PLANTING 100' WIDE STRIP
102	10	Red Maple	4" DIA.	50.00	500.00	PLANTING 100' WIDE STRIP
103	10	Red Maple	4" DIA.	50.00	500.00	PLANTING 100' WIDE STRIP
104	10	Red Maple	4" DIA.	50.00	500.00	PLANTING 100' WIDE STRIP
105	10	Red Maple	4" DIA.	50.00	500.00	PLANTING 100' WIDE STRIP
106	10	Red Maple	4" DIA.	50.00	500.00	PLANTING 100' WIDE STRIP
107	10	Red Maple	4" DIA.	50.00	500.00	PLANTING 100' WIDE STRIP
108	10	Red Maple	4" DIA.	50.00	500.00	PLANTING 100' WIDE STRIP
109	10	Red Maple	4" DIA.	50.00	500.00	PLANTING 100' WIDE STRIP
110	10	Red Maple	4" DIA.	50.00	500.00	PLANTING 100' WIDE STRIP

NAI Farberman
 Commercial Real Estate Services, Worldwide.
 www.naifarberman.com

Carrie Weiss
 Vice President | 248.351.6328
 weiss@farberman.com

Wendy Acho
 Leasing and Sales Associate | 248.563.0739
 acho@farberman.com

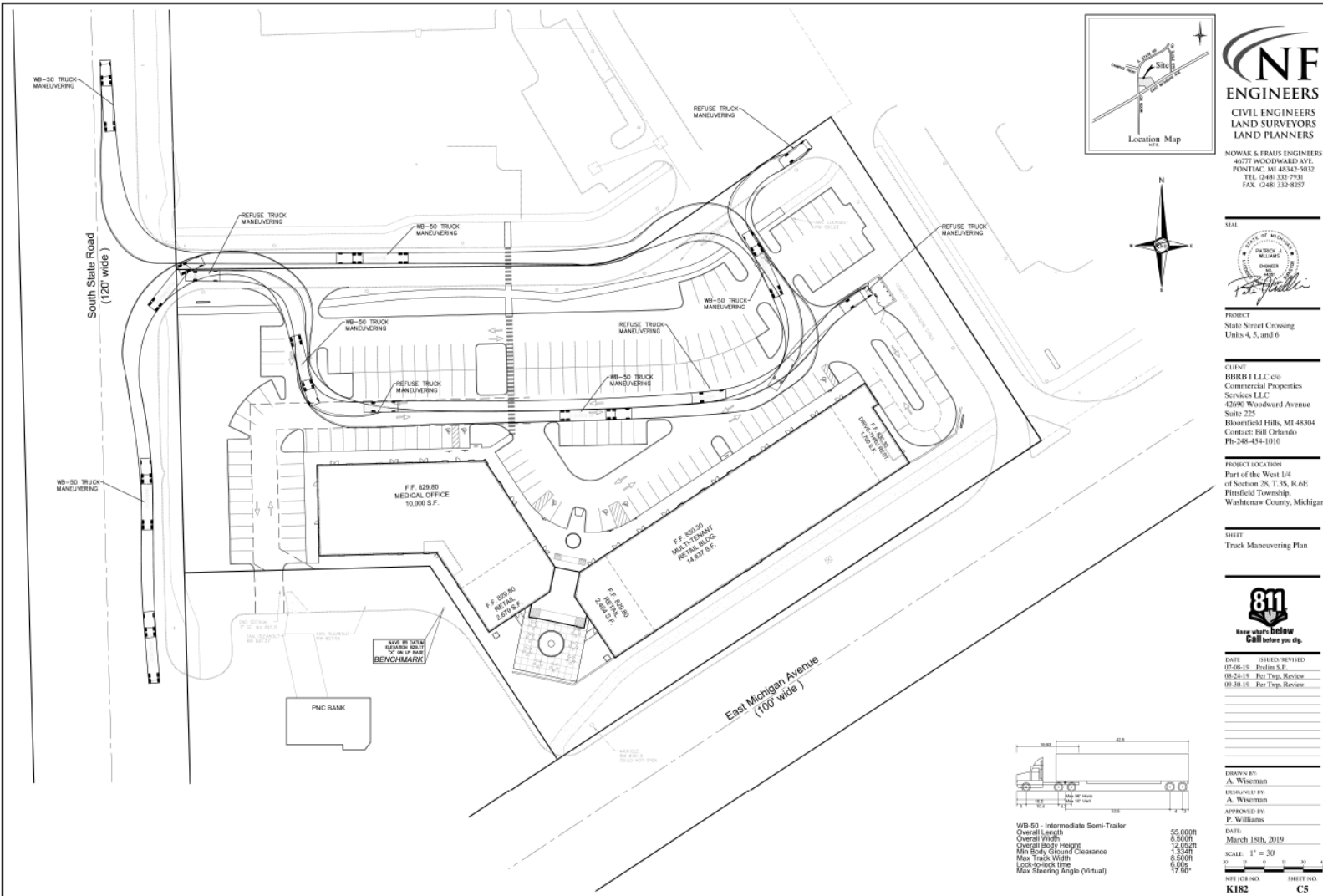
NO WARRANTY, EXPRESS OR IMPLIED, IS MADE AS TO THE ACCURACY OF THE INFORMATION CONTAINED HEREIN. THIS INFORMATION IS SUBMITTED SUBJECT TO ERRORS, OMISSIONS, CHANGE OF PRICE, RENTAL OR OTHER CONDITIONS, WITHDRAWAL WITHOUT NOTICE, AND IS SUBJECT TO ANY SPECIAL LISTING CONDITIONS IMPOSED BY OUR PRINCIPALS, COOPERATING BROKERS, BUYERS, TENANTS AND OTHER PARTIES WHO RECEIVE THIS DOCUMENT SHOULD NOT RELY ON IT, BUT SHOULD USE IT AS A STARTING POINT OF ANALYSIS, AND SHOULD INDEPENDENTLY CONFIRM THE ACCURACY OF THE INFORMATION CONTAINED HEREIN THROUGH A DUE DILIGENCE REVIEW OF THE BOOKS, RECORDS, FILES AND DOCUMENTS THAT CONSTITUTE RELIABLE SOURCES OF THE INFORMATION DESCRIBED HEREIN. LOGOS ARE FOR IDENTIFICATION PURPOSES ONLY AND MAY BE TRADEMARKS OF THEIR RESPECTIVE COMPANIES. NAI Farberman, INC. CA BRE LIC. #01990696.

1,400 - 38,000 SF

NEW CONSTRUCTION/LAND/EXISTING RETAIL



BTS/GROUND LEASE/FOR LEASE



CF ENGINEERS
 CIVIL ENGINEERS
 LAND SURVEYORS
 LAND PLANNERS
 NOWAK & FRANK ENGINEERS
 4077 WOODWARD AVE.
 PONTIAC, MI 48342-5032
 TEL: (248) 332-7970
 FAX: (248) 332-8257



PROJECT
 State Street Crossing
 Units 4, 5, and 6

CLIENT
 HIRSH I LLC c/o
 Commercial Properties
 Services LLC
 4200 Woodward Avenue
 Suite 225
 Bloomfield Hills, MI 48304
 Contact: Bill Orlando
 PH: 248-454-0100

PROJECT LOCATION
 Part of the West 1/4
 of Section 28, T.3S, R.6E
 Pittsfield Township,
 Washtenaw County, Michigan

SHEET
 Truck Maneuvering Plan



DATE: DATED/REVISED
 07-08-19: Pw/lin S.P.
 08-28-19: Per Top, Review
 09-30-19: Per Top, Review

DRAWN BY:
 A. Wiseman
 DESIGNED BY:
 A. Wiseman
 APPROVED BY:
 P. Williams
 DATE:
 March 18th, 2019
 SCALE: 1" = 30'
 SHEET NO.
K182 C5



WB-50 - Intermediate Semi-Trailer
 Overall Length 55.00ft
 Overall Width 8.50ft
 Overall Body Height 12.05ft
 Min Body Ground Clearance 1.33ft
 Max Truck Width 8.50ft
 Lock-to-lock time 6.00s
 Max Steering Angle (Virtual) 17.50°

1,400 - 38,000 SF

NEW CONSTRUCTION/LAND/EXISTING RETAIL

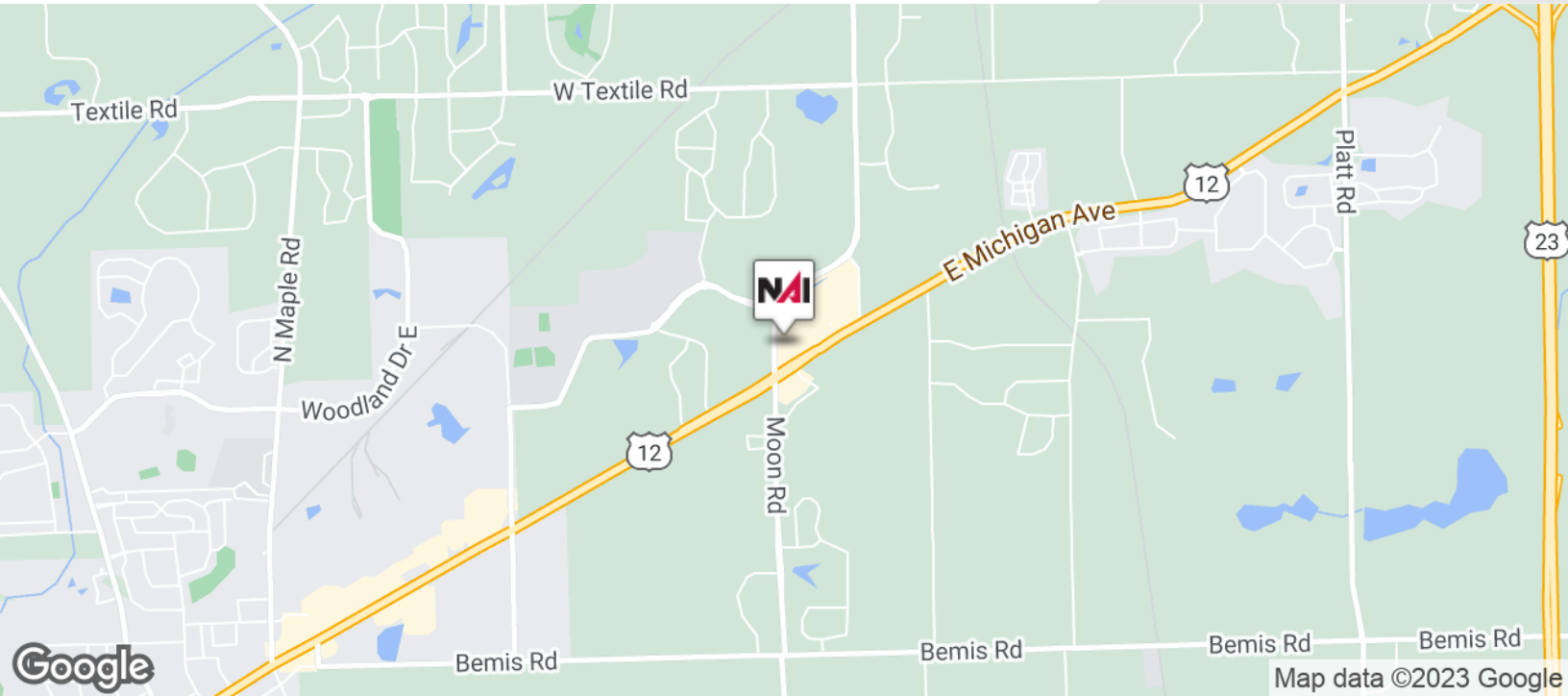
BTS/GROUND LEASE/FOR LEASE



1,400 - 38,000 SF

NEW CONSTRUCTION/LAND/EXISTING RETAIL

BTS/GROUND LEASE/FOR LEASE



Commercial Real Estate Services, Worldwide.

www.naifarbman.com

Carrie Weiss

Vice President | 248.351.6328
weiss@farbman.com

Wendy Acho

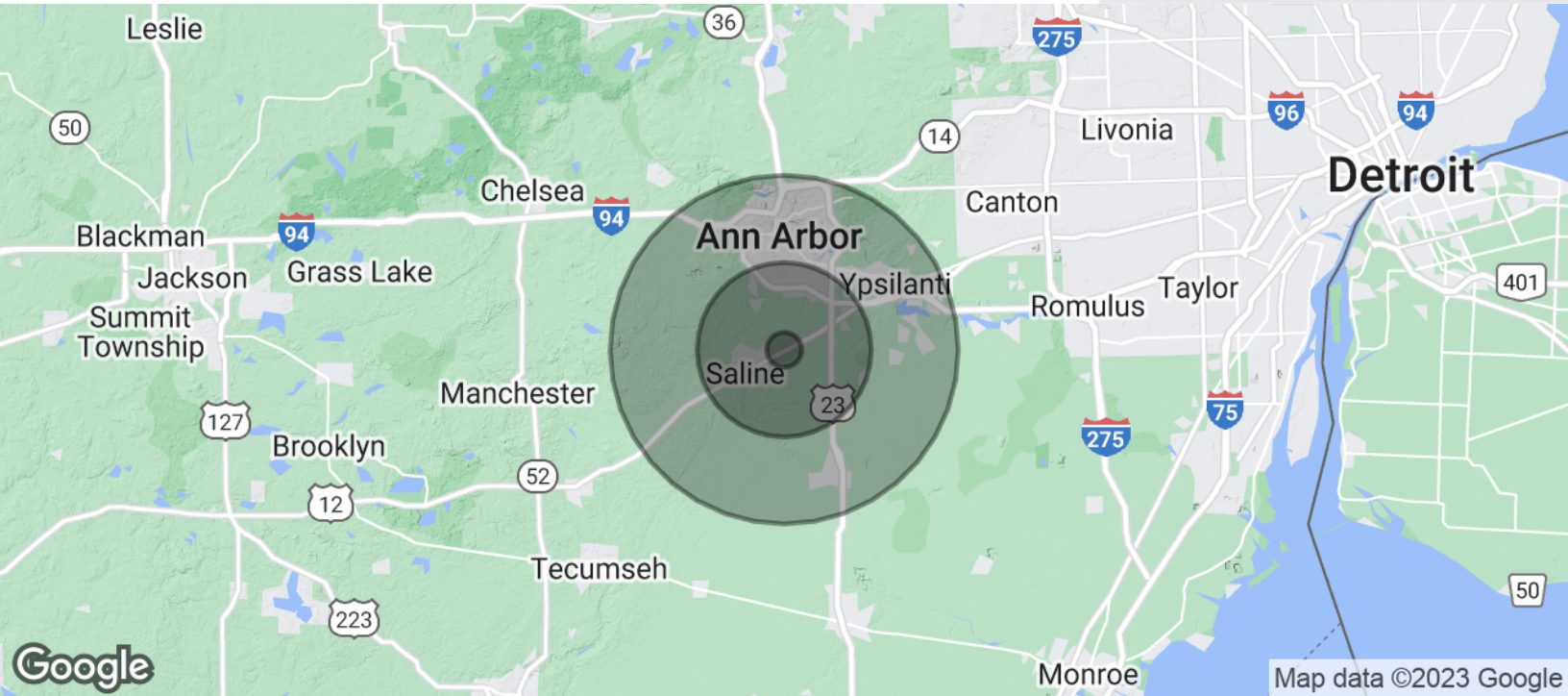
Leasing and Sales Associate | 248.563.0739
acho@farbman.com

NO WARRANTY, EXPRESS OR IMPLIED, IS MADE AS TO THE ACCURACY OF THE INFORMATION CONTAINED HEREIN. THIS INFORMATION IS SUBMITTED SUBJECT TO ERRORS, OMISSIONS, CHANGE OF PRICE, RENTAL OR OTHER CONDITIONS, WITHDRAWAL WITHOUT NOTICE, AND IS SUBJECT TO ANY SPECIAL LISTING CONDITIONS IMPOSED BY OUR PRINCIPALS, COOPERATING BROKERS, BUYERS, TENANTS AND OTHER PARTIES WHO RECEIVE THIS DOCUMENT SHOULD NOT RELY ON IT, BUT SHOULD USE IT AS A STARTING POINT OF ANALYSIS, AND SHOULD INDEPENDENTLY CONFIRM THE ACCURACY OF THE INFORMATION CONTAINED HEREIN THROUGH A DUE DILIGENCE REVIEW OF THE BOOKS, RECORDS, FILES AND DOCUMENTS THAT CONSTITUTE RELIABLE SOURCES OF THE INFORMATION DESCRIBED HEREIN. LOGOS ARE FOR IDENTIFICATION PURPOSES ONLY AND MAY BE TRADEMARKS OF THEIR RESPECTIVE COMPANIES. NAI Farbman, INC. CA BRE LIC. #01990696.

1,400 - 38,000 SF

NEW CONSTRUCTION/LAND/EXISTING RETAIL

BTS/GROUND LEASE/FOR LEASE



POPULATION

1 MILE

5 MILES

10 MILES

Total Population

1,348

78,987

317,375

Average Age

37.8

36.8

33.9

Average Age (Male)

37.8

36.6

33.5

Average Age (Female)

37.4

37.0

34.3

HOUSEHOLDS & INCOME

1 MILE

5 MILES

10 MILES

Total Households

473

32,558

124,316

of Persons per HH

2.8

2.4

2.6

Average HH Income

\$119,188

\$84,383

\$78,515

Average House Value

\$266,769

\$286,327

* Demographic data derived from 2020 ACS - US Census



Commercial Real Estate Services, Worldwide.

www.naifarbman.com

Carrie Weiss

Vice President | 248.351.6328
weiss@farbman.com

Wendy Acho

Leasing and Sales Associate | 248.563.0739
acho@farbman.com

NO WARRANTY, EXPRESS OR IMPLIED, IS MADE AS TO THE ACCURACY OF THE INFORMATION CONTAINED HEREIN. THIS INFORMATION IS SUBMITTED SUBJECT TO ERRORS, OMISSIONS, CHANGE OF PRICE, RENTAL OR OTHER CONDITIONS, WITHDRAWAL WITHOUT NOTICE, AND IS SUBJECT TO ANY SPECIAL LISTING CONDITIONS IMPOSED BY OUR PRINCIPALS, COOPERATING BROKERS, BUYERS, TENANTS AND OTHER PARTIES WHO RECEIVE THIS DOCUMENT SHOULD NOT RELY ON IT, BUT SHOULD USE IT AS A STARTING POINT OF ANALYSIS, AND SHOULD INDEPENDENTLY CONFIRM THE ACCURACY OF THE INFORMATION CONTAINED HEREIN THROUGH A DUE DILIGENCE REVIEW OF THE BOOKS, RECORDS, FILES AND DOCUMENTS THAT CONSTITUTE RELIABLE SOURCES OF THE INFORMATION DESCRIBED HEREIN. LOGOS ARE FOR IDENTIFICATION PURPOSES ONLY AND MAY BE TRADEMARKS OF THEIR RESPECTIVE COMPANIES. NAI Farbman, INC. CA BRE LIC. #01990696.