



# Kissimmee Medical Clinic

1821 ARMSTRONG BLVD, KISSIMMEE, FL 34741

## Property Highlights

- Minutes from Advent Health Hospital
- Surrounded by Medical Providers
- Across the street from Kissimmee Gateway Airport
- Close to Orlando International Airport
- Customizable space for your practice's needs
- Anchored by an Ambulatory Surgery Center

FOR MORE INFORMATION | [MILLENNIA-PARTNERS.COM](https://millenia-partners.com)

PRESENTED BY

**LUKE SAWYER**

321.205.6544

[lsawyer@millenia-partners.com](mailto:lsawyer@millenia-partners.com)

**JESSICA FLEMING**

407.455.2829

[jfleming@millenia-partners.com](mailto:jfleming@millenia-partners.com)



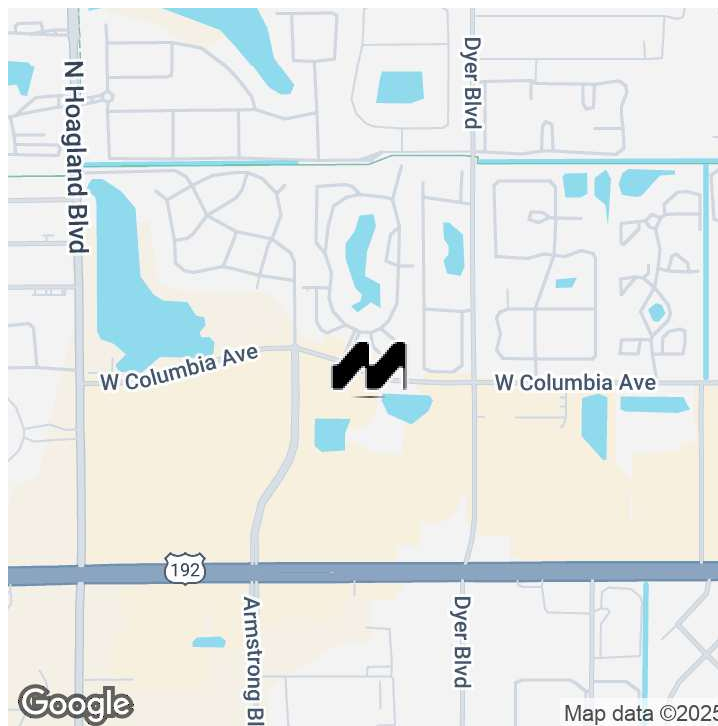
Google

Map data ©2025 Imagery ©2025 TerraMetrics

## EXECUTIVE SUMMARY

1821 ARMSTRONG BLVD, KISSIMMEE, FL 34741

# Kissimmee Medical Clinic



### OFFERING SUMMARY

Lease Rate:	Negotiable
Building Size:	38,000 SF
Available SF:	2,500 - 17,000 SF
Lot Size:	2.81 Acres
Year Built:	1988
Renovated:	2025
Zoning:	Office/Professional
Market:	Orlando
Submarket:	Kissimmee

### PROPERTY OVERVIEW

This is a fantastic opportunity to join a state-of-the-art facility designed to accommodate modern healthcare practices. The space offers flexibility to suit a range of medical disciplines, with premium infrastructure and patient-focused amenities. Anchored by a surgery center, future tenants include a cardiologist and gastroenterologist with a total of ~17,000sf of second floor space available for build-to-suite spaces.

### LOCATION OVERVIEW

Medical building located off US 192 and Armstrong in Kissimmee Florida. Moments away from multiple medical facilities and less than 3 miles from the hospital, this is the ideal location for any company that wants to take advantage of all that the South Orlando MSA has to offer.

PRESENTED BY

**LUKE SAWYER**

321.205.6544

lsawyer@millenia-partners.com

**JESSICA FLEMING**

407.455.2829

jfleming@millenia-partners.com

OFFICE BUILDING

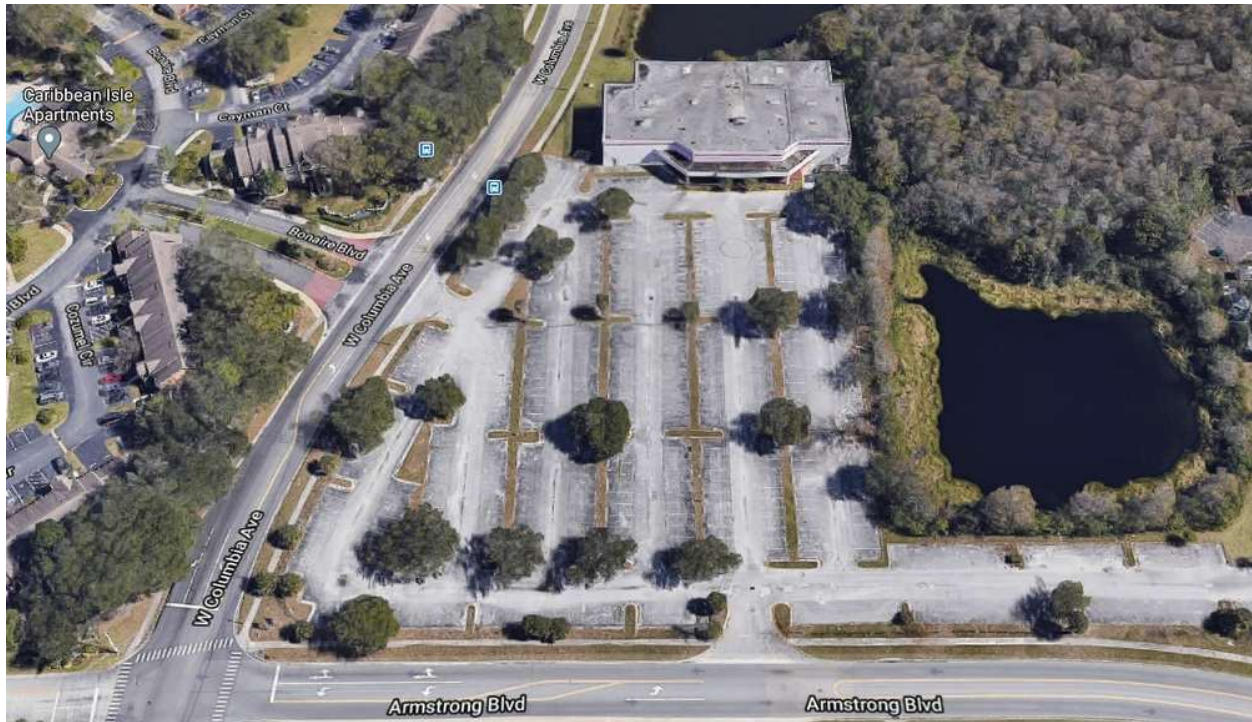
## For Lease



## ADDITIONAL PHOTOS

1821 ARMSTRONG BLVD, KISSIMMEE, FL 34741

# Kissimmee Medical Clinic



PRESENTED BY

**LUKE SAWYER**

321.205.6544

lsawyer@millenia-partners.com

**JESSICA FLEMING**

407.455.2829

jfleming@millenia-partners.com

OFFICE BUILDING

## For Lease

## ADDITIONAL PHOTOS

1821 ARMSTRONG BLVD, KISSIMMEE, FL 34741

# Kissimmee Medical Clinic



PRESENTED BY

**LUKE SAWYER**

321.205.6544

lsawyer@millenia-partners.com

**JESSICA FLEMING**

407.455.2829

jfleming@millenia-partners.com

OFFICE BUILDING

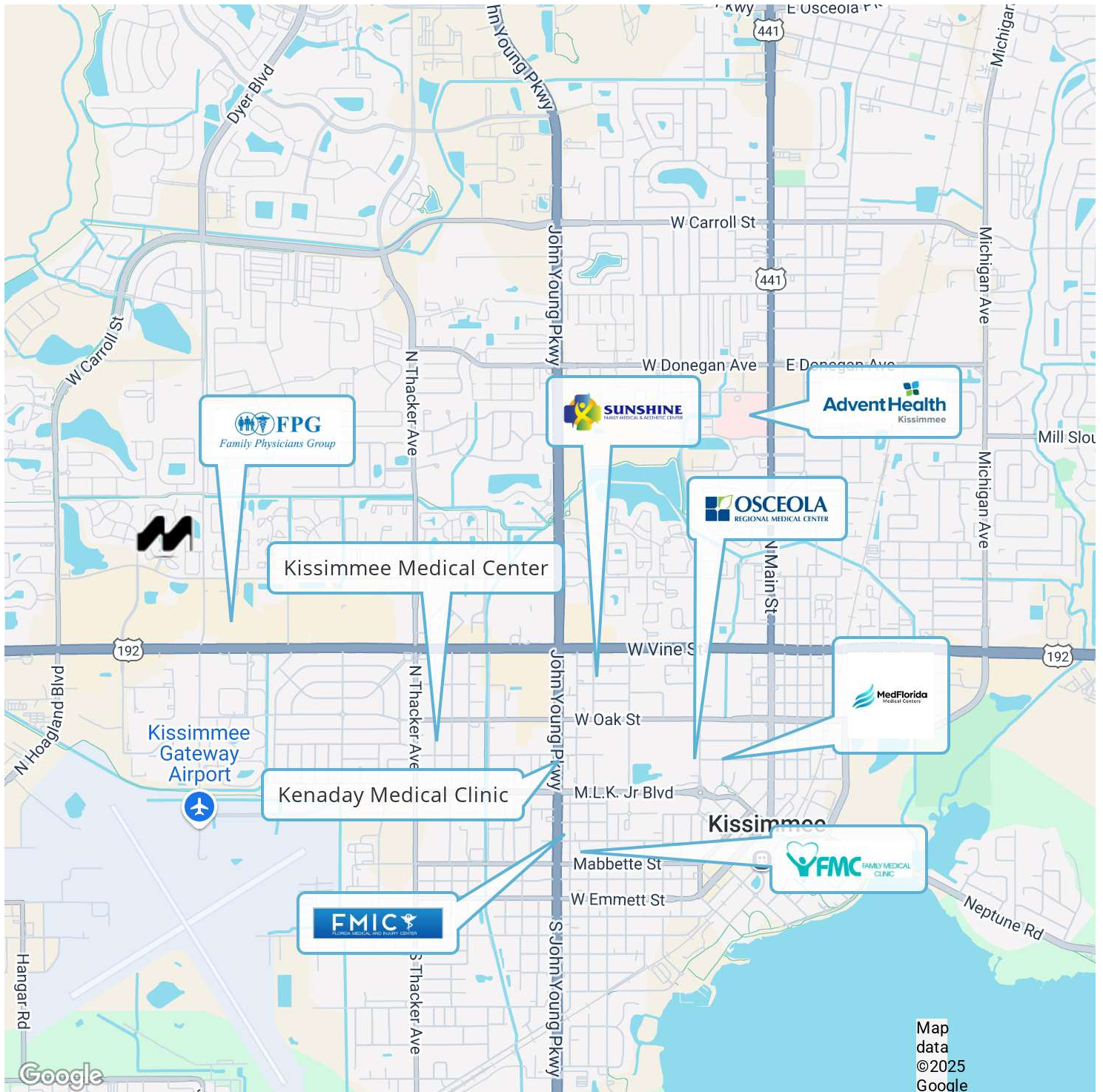
# For Lease



## RETAILER MAP

1821 ARMSTRONG BLVD, KISSIMMEE, FL 34741

# Kissimmee Medical Clinic



PRESENTED BY

**LUKE SAWYER**

321.205.6544

lsawyer@millenia-partners.com

**JESSICA FLEMING**

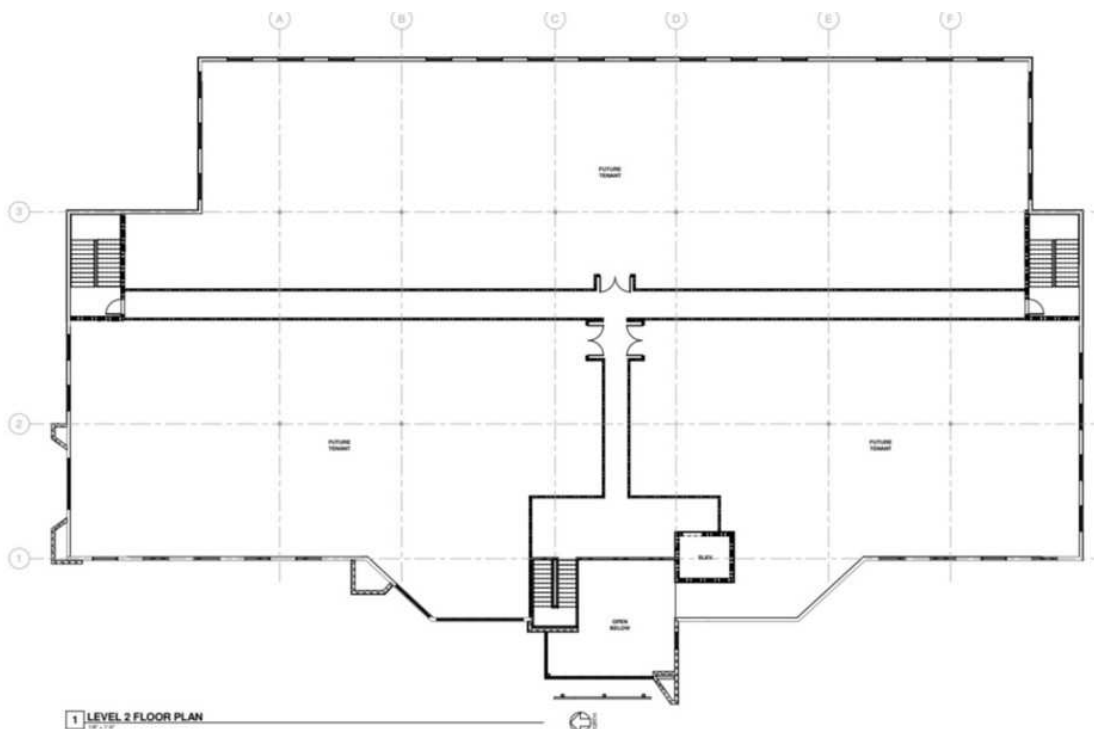
407.455.2829

jfleming@millenia-partners.com

OFFICE BUILDING

## For Lease

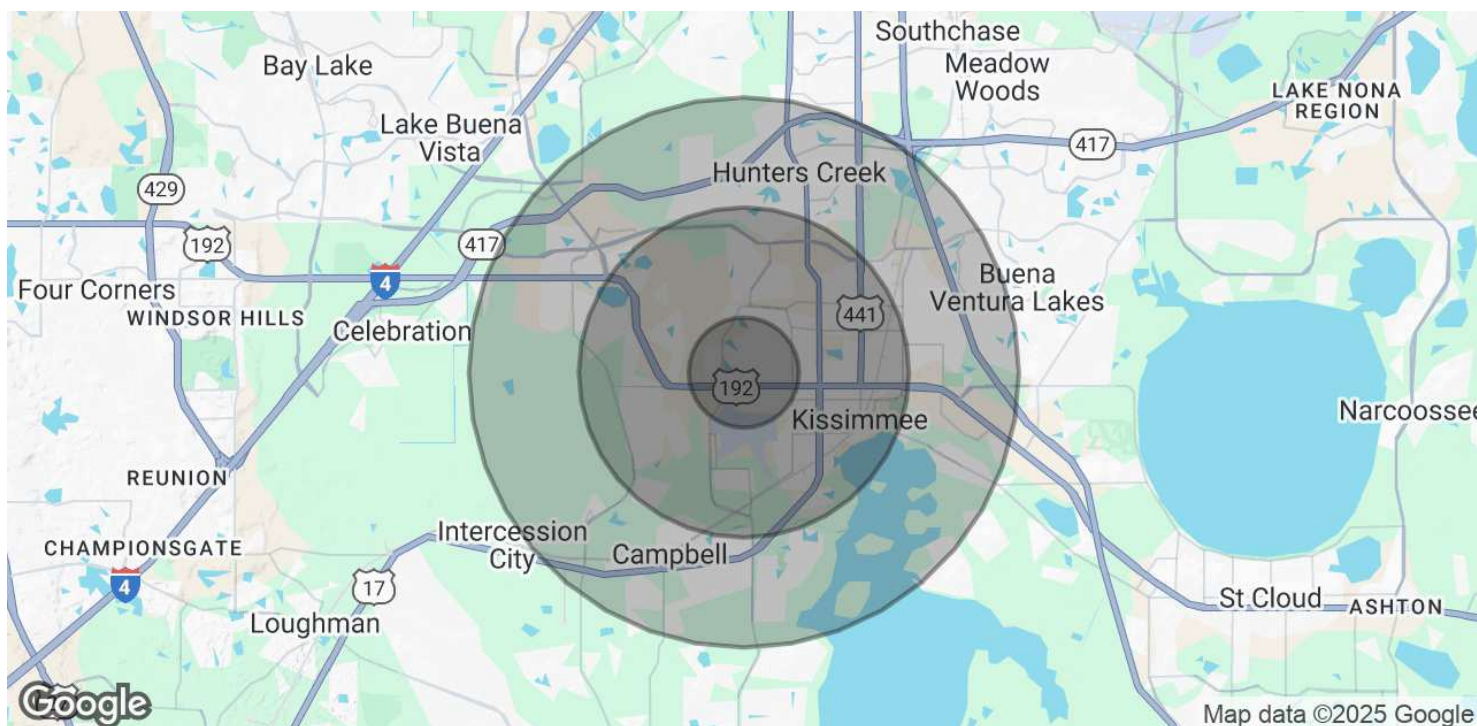
# Kissimmee Medical Clinic



## DEMOGRAPHICS MAP & REPORT

1821 ARMSTRONG BLVD, KISSIMMEE, FL 34741

# Kissimmee Medical Clinic



POPULATION	1 MILE	3 MILES	5 MILES
Total Population	8,659	53,208	114,401
Average age	32.0	32.3	34.3
Average age (Male)	31.0	31.2	33.4
Average age (Female)	33.6	33.5	35.3

HOUSEHOLDS & INCOME	1 MILE	3 MILES	5 MILES
Total households	3,594	20,438	42,162
# of persons per HH	2.4	2.6	2.7
Average HH income	\$41,895	\$44,652	\$54,474
Average house value	\$116,364	\$134,044	\$221,820

\* Demographic data derived from 2020 ACS - US Census

PRESENTED BY

**LUKE SAWYER**

321.205.6544

lsawyer@millenia-partners.com

**JESSICA FLEMING**

407.455.2829

jfleming@millenia-partners.com

OFFICE BUILDING

## For Lease