

# 19th Street Plaza

SHOPPING CENTER *FOR LEASE*



2900 SE 19th Street, Moore, Oklahoma 73160



7501 Broadway Extension  
Oklahoma City, OK 73116

Presented By:

**George W. Huffman**  
CEO | Managing Broker  
M: 405.409.4400  
O: 405.752.2525  
george@iwpok.com

Assisted By:

**Heather Wolf**  
Broker Assistant  
M: 405.837.0528  
O: 405.752.2525  
heather@iwpok.com

## PROPERTY OVERVIEW

Welcome to 19th Street Plaza shopping center in Moore, Oklahoma. All spaces feature large windows that bathe the interiors in natural light, providing an inviting environment for both customers and employees.

Located at the southwest corner of SE 19th Street and S Sunny Lane, the plaza enjoys excellent visibility and high daytime traffic. Ideal for retail stores, office spaces, or medical practices, this property offers the perfect location to grow your business.

Call: George Huffman @ 405-409-4400 | [george@iwpok.com](mailto:george@iwpok.com)  
Assisted by: Heather Wolf @ 405-837-0528 | [heather@iwpok.com](mailto:heather@iwpok.com)

### OFFERING SUMMARY

**\$ 14.00 / SF**

<b>AVAILABLE SF</b>	<b>3,740</b>
<b>LEASE TYPE</b>	<b>NNN</b>
<b>TYPICAL TERM</b>	<b>3-5 Years</b>
<b>CO-BROKERAGE</b>	<b>3% Primary Term</b>



**FOR LEASE**

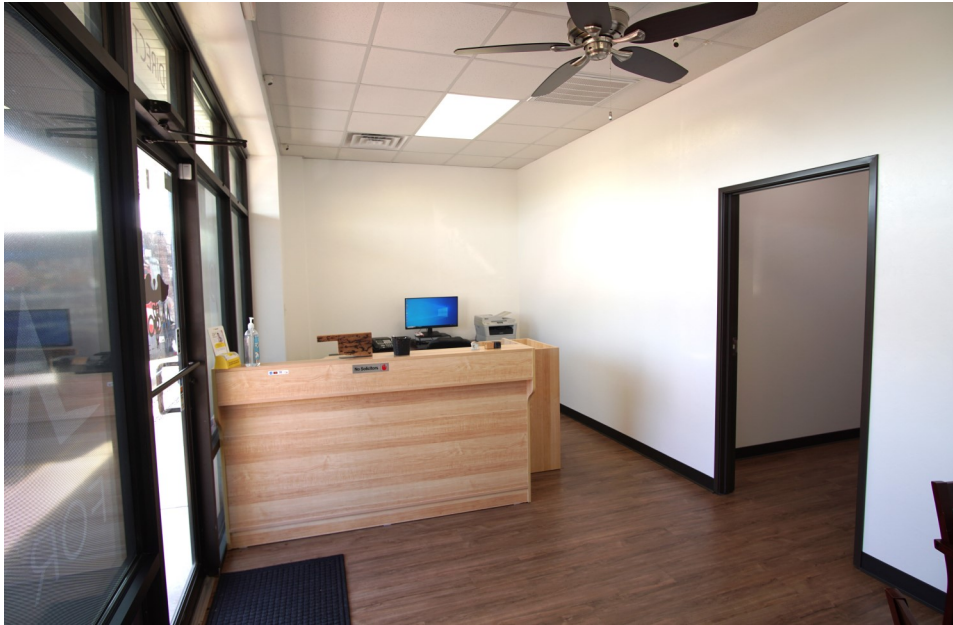


**AVAILABLE SUITES**

<b>Suite No.</b>	<b>Sq Ft</b>	<b>Notes</b>
Suite 5	1,270	Retail/Office/Flex
Suite 6	1,270	Retail/Office/Flex
Suite 8	1,200	Retail/Office/Flex



**FOR LEASE**



**FOR LEASE**







### Highlights:

- ◆ Diverse Tenant Mix: Join a thriving community of businesses, including FastSigns, Michael's Catering, Keepsake Fabrics, and more.
- ◆ Ample Parking: Enjoy the convent parking for your customers.
- ◆ Prime Location: Strategically located at SE 19<sup>th</sup> Street & S Sunnyslane Road in Moore.

Call: George Huffman @ 405-409-4400 | [george@iwpok.com](mailto:george@iwpok.com)

Assisted by: Heather Wolf @ 405-837-0528 | [heather@iwpok.com](mailto:heather@iwpok.com)

## 2990 SE 19th Street, Moore, Oklahoma 73160



7501 Broadway Extension  
Oklahoma City, OK 73116

Presented By:

**George W. Huffman**  
CEO | Managing Broker  
M: 405.409.4400  
O: 405.752.2525  
[george@iwpok.com](mailto:george@iwpok.com)

Assisted By:

**Heather Wolf**  
Broker Assistant  
M: 405.837.0528  
O: 405.752.2525  
[heather@iwpok.com](mailto:heather@iwpok.com)