



# OFFICE SPACE FOR LEASE 509 W MAIN STREET BARRINGTON, IL 60010



## BUILDING FEATURES:

- Office Space or Retail Space for Lease
- 325 -1,200 SF -Available
- Interior Building Renovations in 2023
- Operable Windows and Efficient Layouts
- Located Across from Barrington High School
- **\*\*Common Area renovations Completed!! (New Flooring Drywall, Paint, lighting & more!!!!)**
- Ample Parking on site
- Near Restaurants, Shopping and Metra
- Exterior Signage Available
- **RENTAL RATE: SEE BELOW**  
\* Rate Includes HVAC & Electricity

## AVAILABLE SPACE:

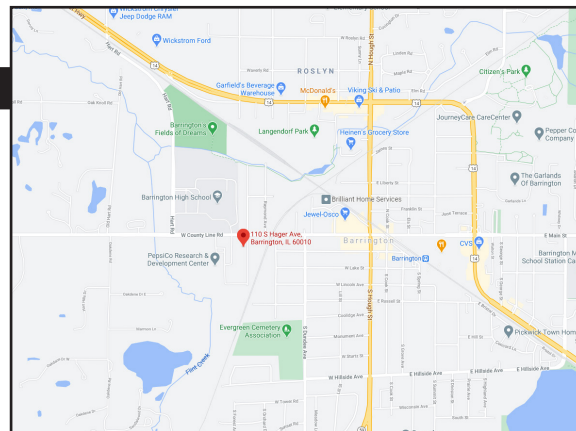
SUITE	SIZE (SF)	PRICING	AVAILABLE
<b>I-D</b>	325 SF	\$485 Per Month*	ASAP
<b>2nd Floor</b>	1,200 SF	\$1,550 Per Month	ASAP

\*\*EXECUTIVE OFFICE SUITES INCLUDES UTILITIES \*\*

## FOR MORE INFORMATION:

RANDY OLCZYK  
Direct: 847.246.9611  
randy@chicagolandcommercial.com

TOM CALLAHAN  
Direct: 847.246.9636  
Tom@chicagolandcommercial.com

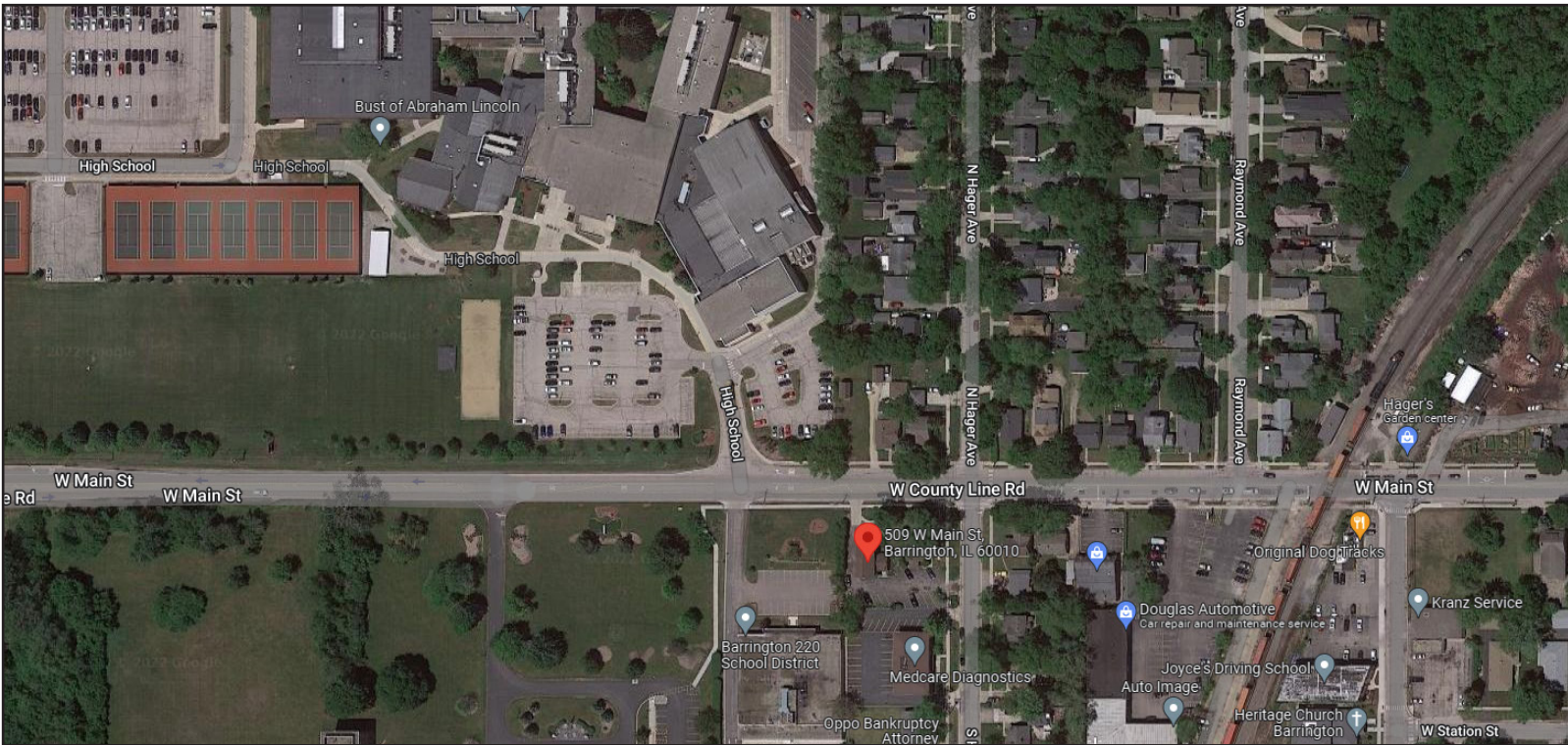
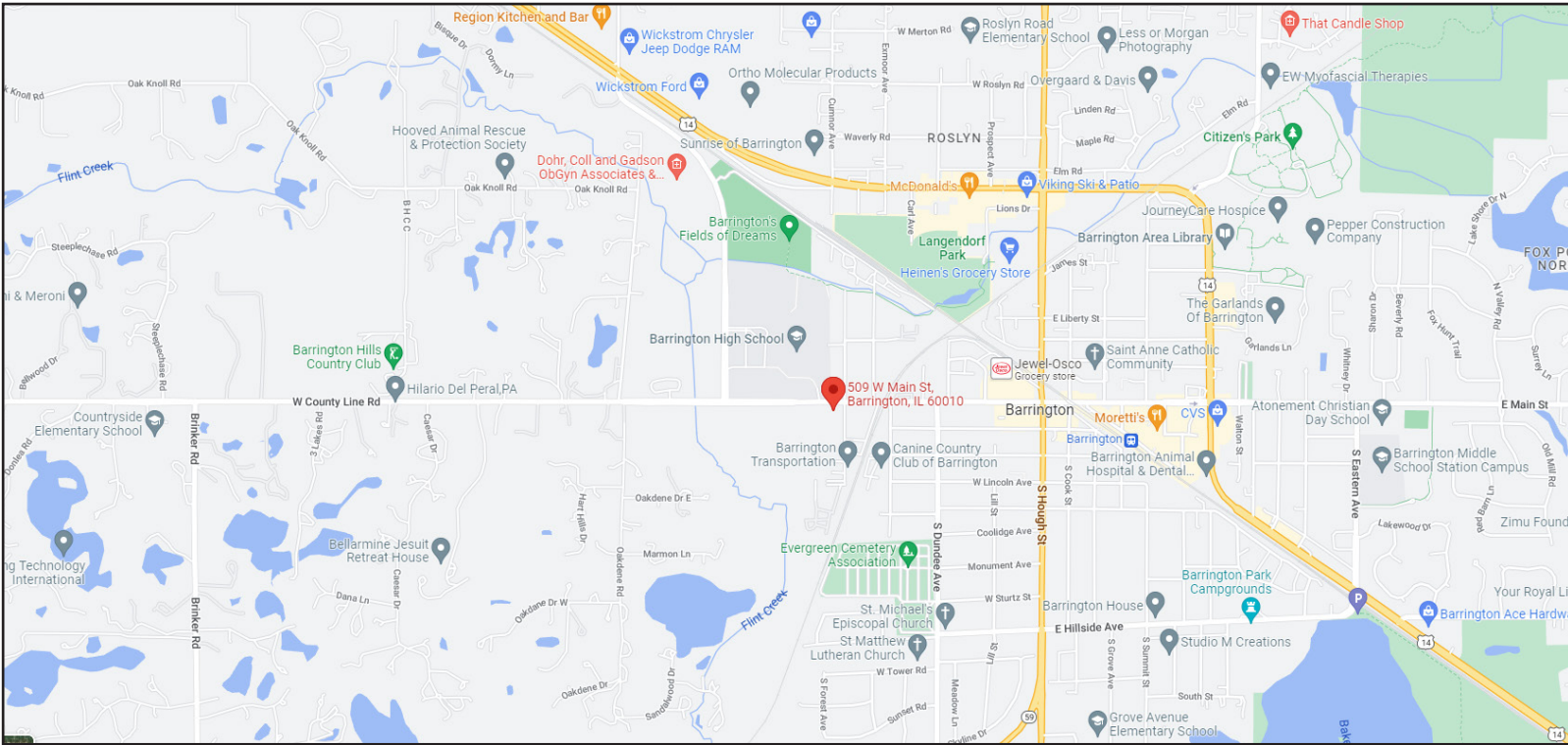


4811 Emerson Ave Suite 112, Palatine, IL 60067



# OFFICE SPACE FOR LEASE 509 W MAIN STREET BARRINGTON, IL 60010

## AERIAL MAP



### FOR MORE INFORMATION:

**RANDY OLCZYK**  
Direct: 847.246.9611  
randy@chicagolandcommercial.com

**TOM CALLAHAN**  
Direct: 847.246.9636  
@chicagolandcommercial.com



4811 Emerson Ave Suite 112, Palatine, IL 60067

LEASING | SALES | TENANT ADVISORY | MANAGEMENT

www.chicagolandcommercial.com



# OFFICE SPACE FOR LEASE

## 509 W MAIN STREET BARRINGTON, IL 60010

INTERIOR BUILDING PHOTOS **\*\*NEWLY RENOVATED COMMON AREAS & SUITES!!!**





# OFFICE SPACE FOR LEASE

## 509 W MAIN STREET BARRINGTON, IL 60010

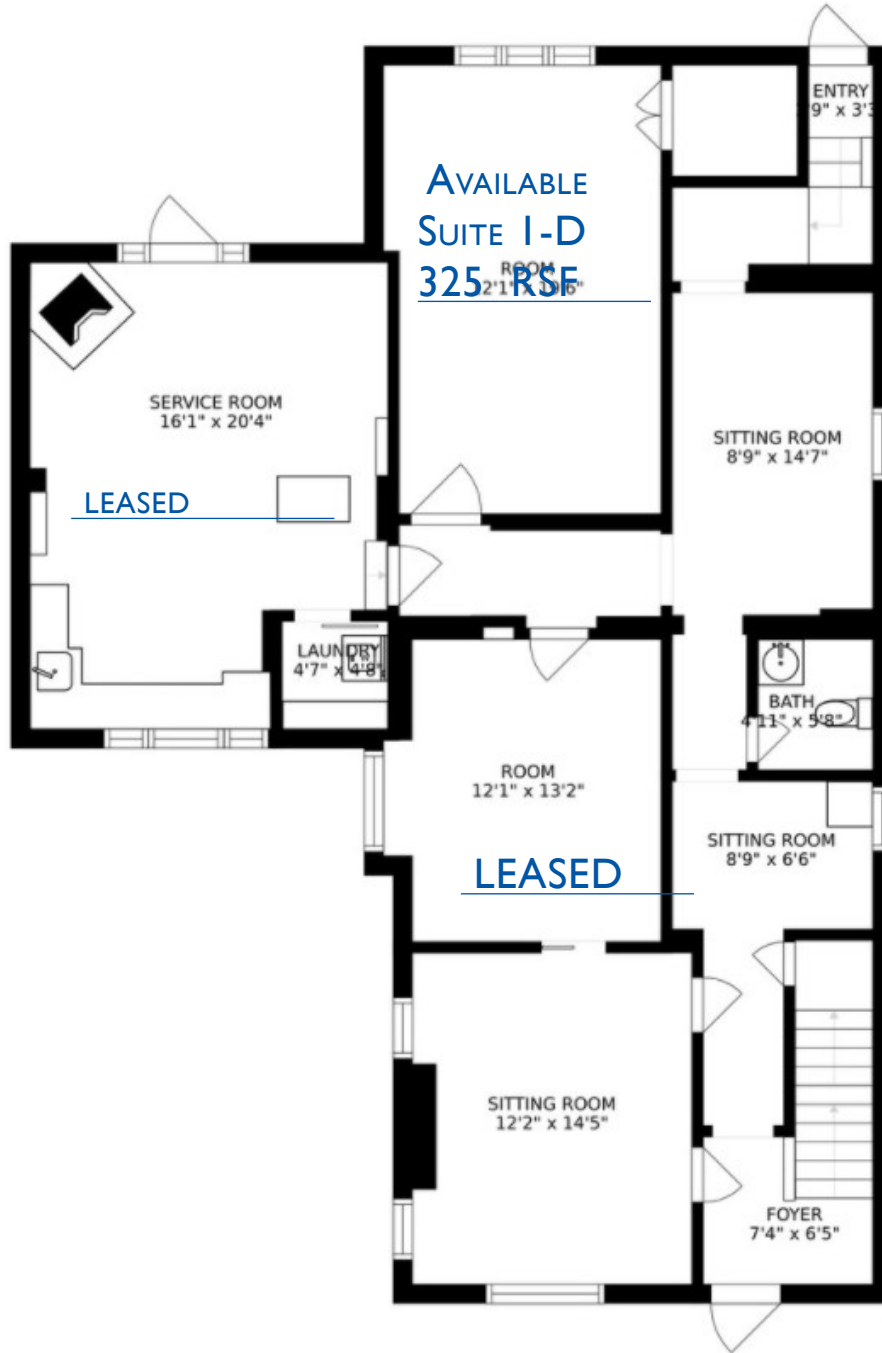
INTERIOR BUILDING PHOTOS \*\*NEWLY RENOVATED COMMON AREAS & SUITES!!!!





# OFFICE SPACE FOR LEASE 509 W MAIN STREET BARRINGTON, IL 60010

## FLOOR PLANS



### FOR MORE INFORMATION:

RANDY OLCZYK  
Direct: 847.246.9611  
randy@chicagolandcommercial.com

TOM CALLAHAN  
Direct: 847.246.9636  
@chicagolandcommercial.com



4811 Emerson Ave Suite 112, Palatine, IL 60067

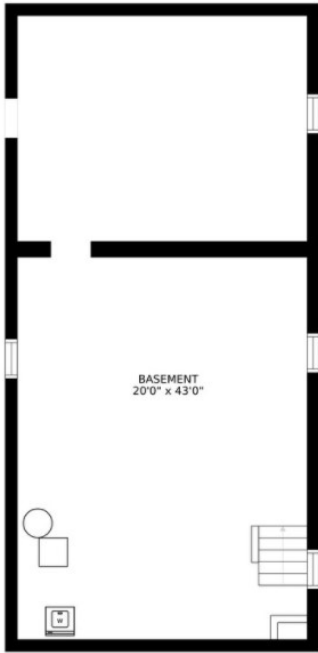
[www.chicagolandcommercial.com](http://www.chicagolandcommercial.com)



# OFFICE SPACE FOR LEASE 509 W MAIN STREET BARRINGTON, IL 60010

## FLOOR PLANS

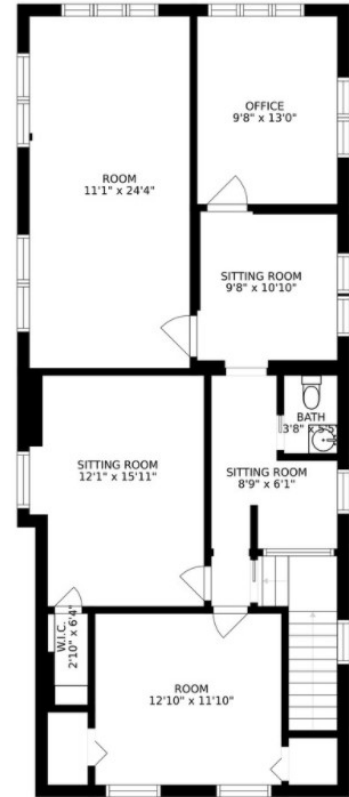
AVAILABLE  
2ND FLOOR  
1,200 RSF



FLOOR 1



FLOOR 2



FLOOR 3

### FOR MORE INFORMATION:

RANDY OLCZYK  
Direct: 847.246.9611  
randy@chicagolandcommercial.com

TOM CALLAHAN  
Direct: 847.246.9636  
@chicagolandcommercial.com



4811 Emerson Ave Suite 112, Palatine, IL 60067