



TRADEMARK

BUSINESS CENTER



220 / 230 / 240 Great Circle Road / Nashville, TN

CBRE



PROPERTY DETAILS

220 / 230 / 240 Great Circle Road / Nashville, TN

232,972 SF

Single Story Business Park

- + Office Suites and Light Industrial Flex Spaces Available
- + Multiple Spec Suites in Move-in Condition
- + Dock and Drive-in Doors Available
- + Professionally Owned and Managed
- + Multiple suites with HVAC in Warehouse



Flex Space Available



Conveniently Located Just 3 Miles
North of Downtown Nashville



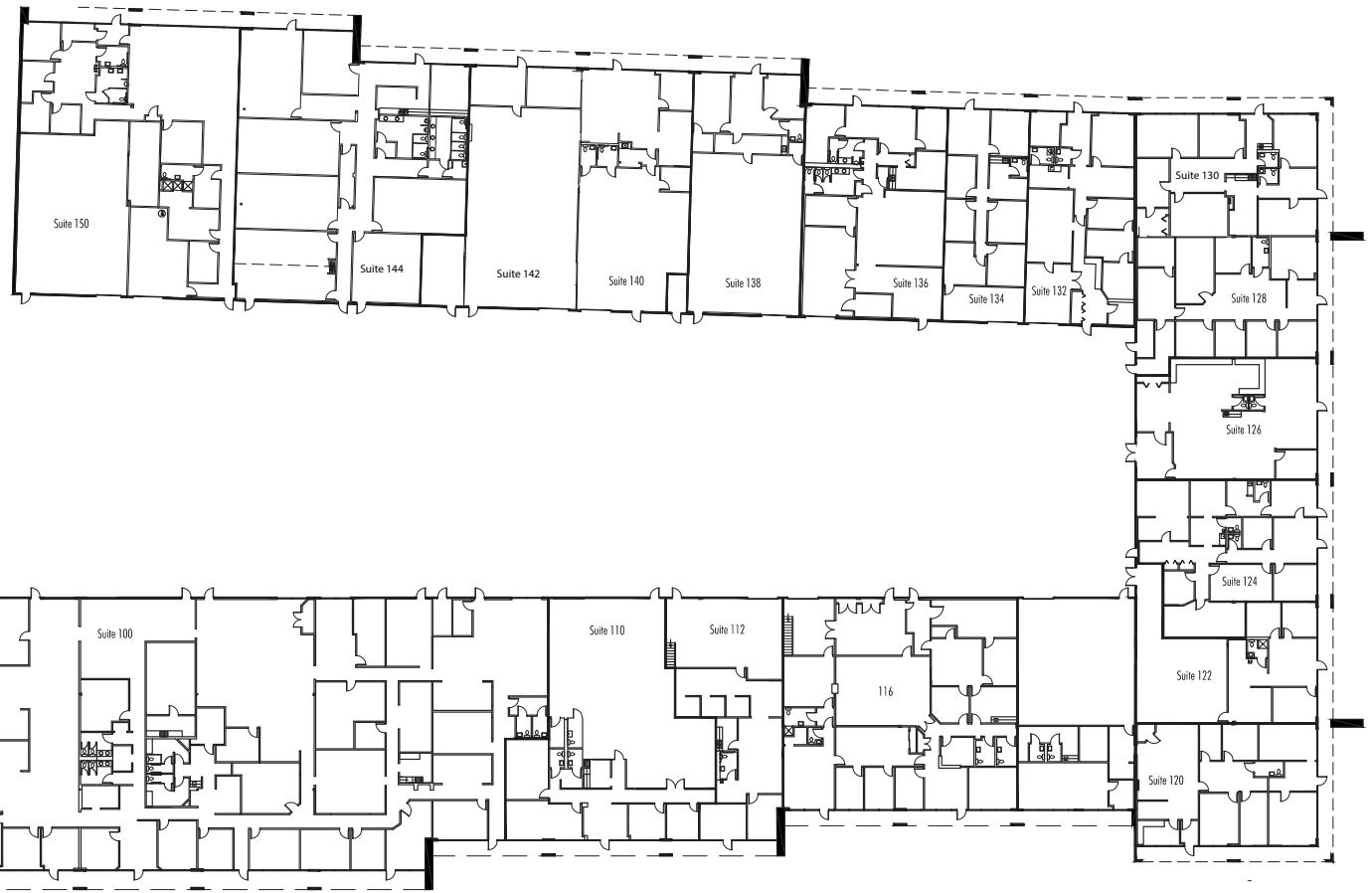
Less Than a Mile from I-65



Parking Ratio: 3/1,000



BUILDING ONE



Available Suites

+Fully Leased





BUILDING TWO

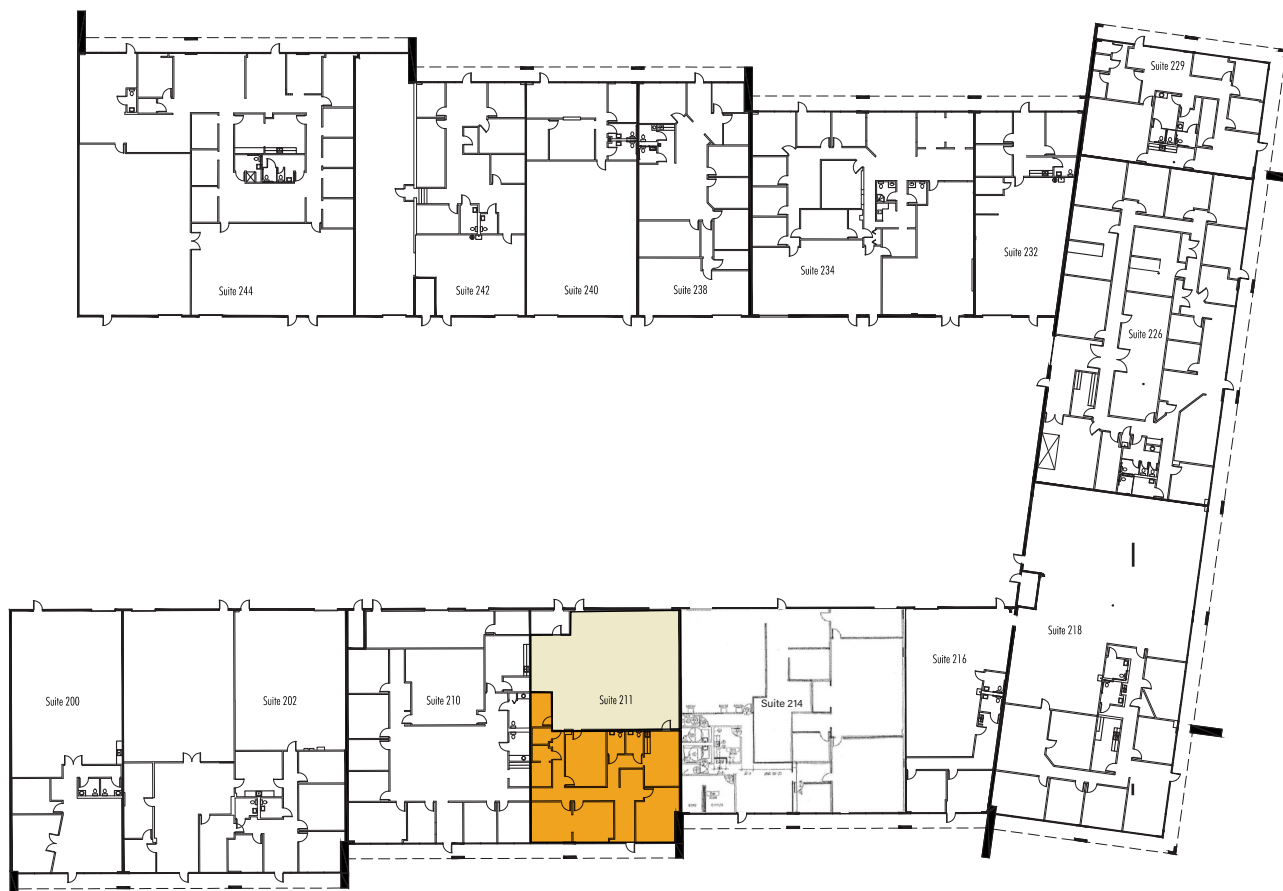


Available Suites

+ Suite 211 - 4,497 SF

3,012 SF Office; 1,485 SF Warehouse

Available 10/1/2025





BUILDING THREE



Available Suites

+ Suites 324/326 - 5,087 SF

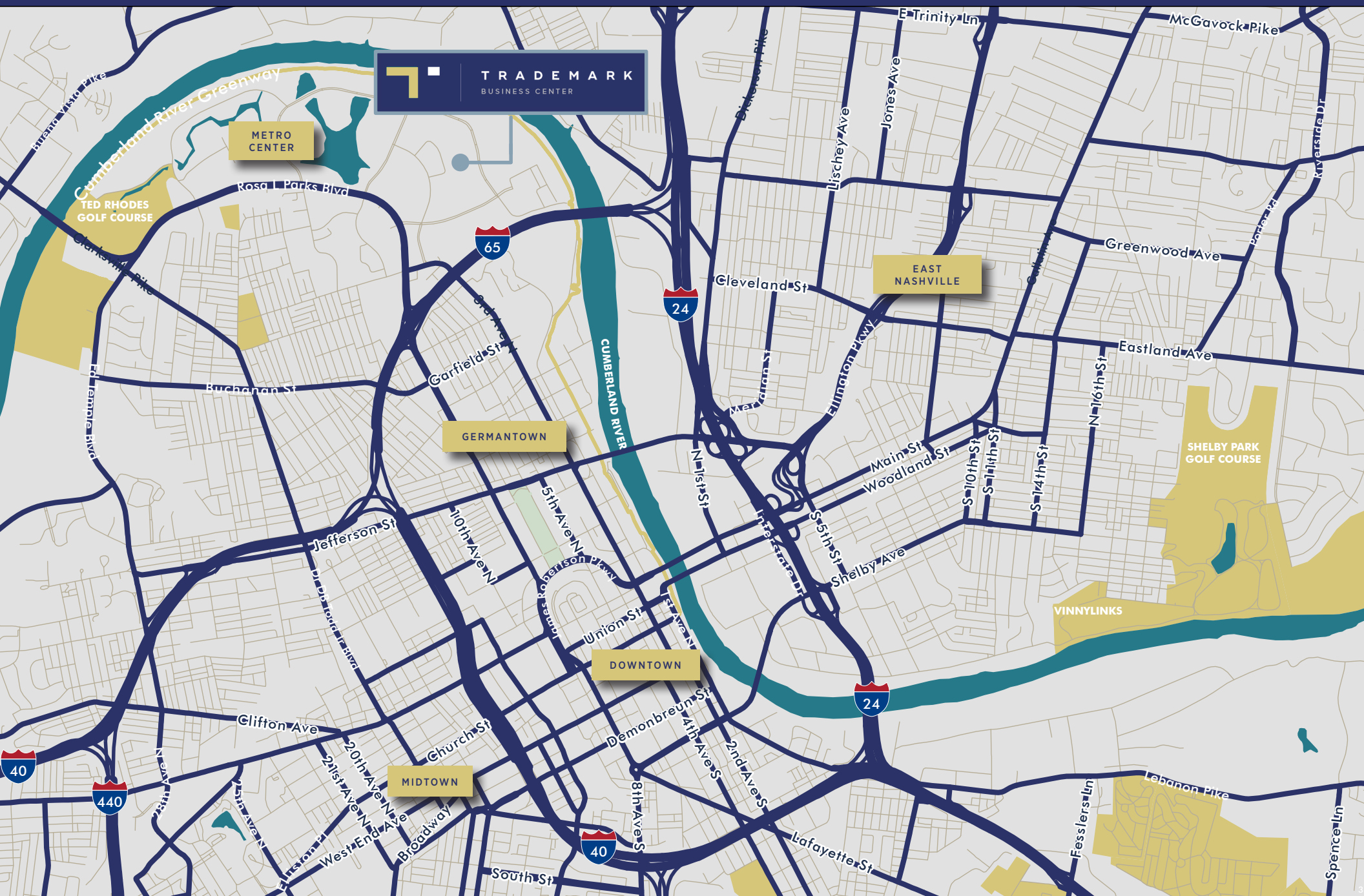
Available 9/1/2025

Space can be demised

+ Suites 338 - 1,882 SF

Available 10/1/2025







ACCESS & AMENITIES



TRADE MARK BUSINESS CENTER



TRADEMARK

BUSINESS CENTER

© 2024 CBRE, Inc. All rights reserved. This information has been obtained from sources believed reliable, but has not been verified for accuracy or completeness. You should conduct a careful, independent investigation of the property and verify all information. Any reliance on this information is solely at your own risk. CBRE and the CBRE logo are service marks of CBRE, Inc. All other marks displayed on this document are the property of their respective owners, and the use of such logos does not imply any affiliation with or endorsement of CBRE. Photos herein are the property of their respective owners. Use of these images without the express written consent of the owner is prohibited.

FOR MORE INFORMATION

Frank Thomasson, SIOR CCIM

Office: +1 615 248 3500

Direct: +1 615 493 9258

frank.thomasson@cbre.com

Byran Fort, SIOR

Office: +1 615 248 3500

Direct: +1 615 493 9259

byran.fort@cbre.com

Grace Sport

Office: +1 615 248 3500

Direct: +1 615 493 9261

grace.sport@cbre.com

