



EQT | EXETER

Available 12/1/2024



401 Eleventh Avenue South

Hopkins, MN 55343

Building Size: 90,186 SF | 90,186 SF of Industrial Space Available

VISIT [EQTEXETER.COM](https://eqtexeter.com)

401 Eleventh Avenue South

Hopkins, Minnesota

Building Size: 90,186 SF | Building Availability: 90,186 SF

Building Specifications

- 90,186 SF total building size
- 90,186 SF available
- Clear Height: 24'
- Auto Parking: 128
- Power: 1,600 amp, 277/480V
- Column Spacing: 39'x40'
- Sprinkler: ESFR
- Constructed: 1996
- Renovated in 2016
- **Suite 100**
 - 45,881 SF
 - 8,202 SF office
 - 7 exterior docks
 - 1 drive-in door
- **Suite 200**
 - 19,540 SF
 - 2,574 SF office
 - 3 exterior docks
- **Suite 300**
 - 24,765 SF
 - 2,354 SF office
 - 1 exterior dock
 - 2 drive-in doors

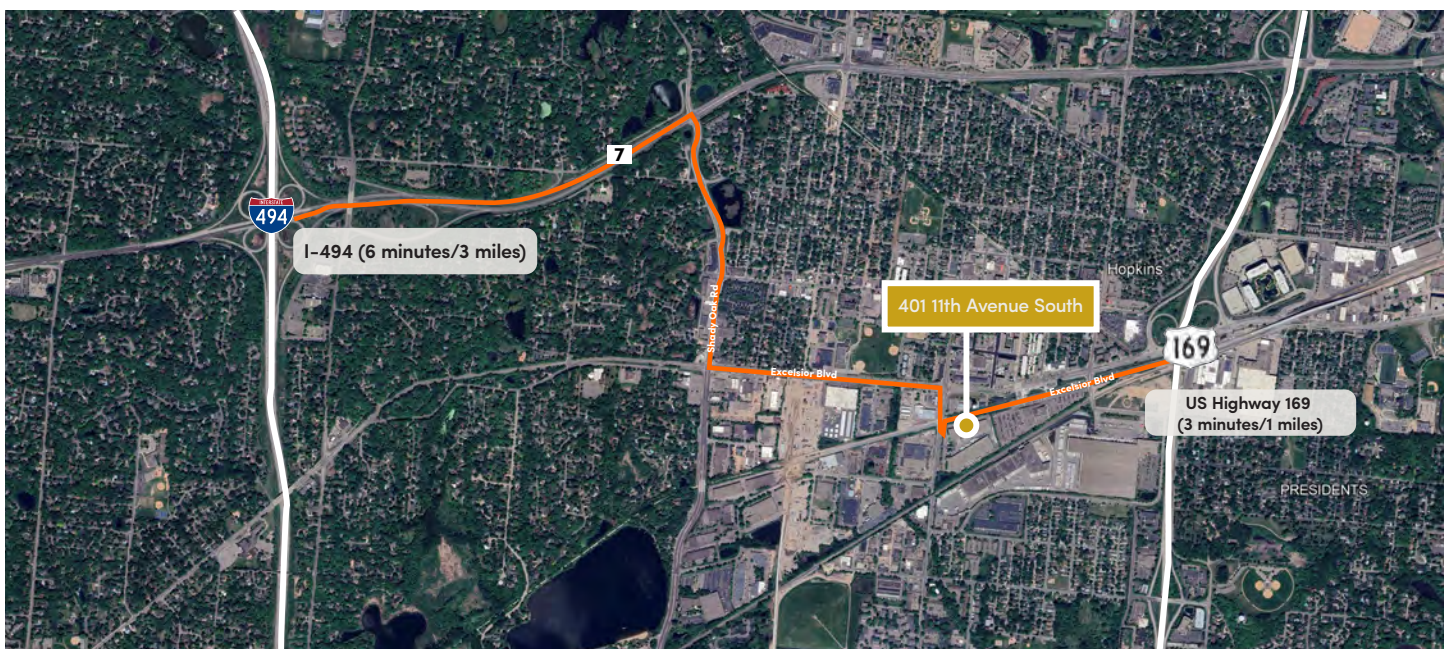


Accessibility

- Near-immediate access to US Highway 169 via Excelsior Blvd (within 1 mile) & I-494 (6 minutes/3 miles)
- Proximity to retail and restaurants including historic downtown Hopkins; walking distance

Transportation

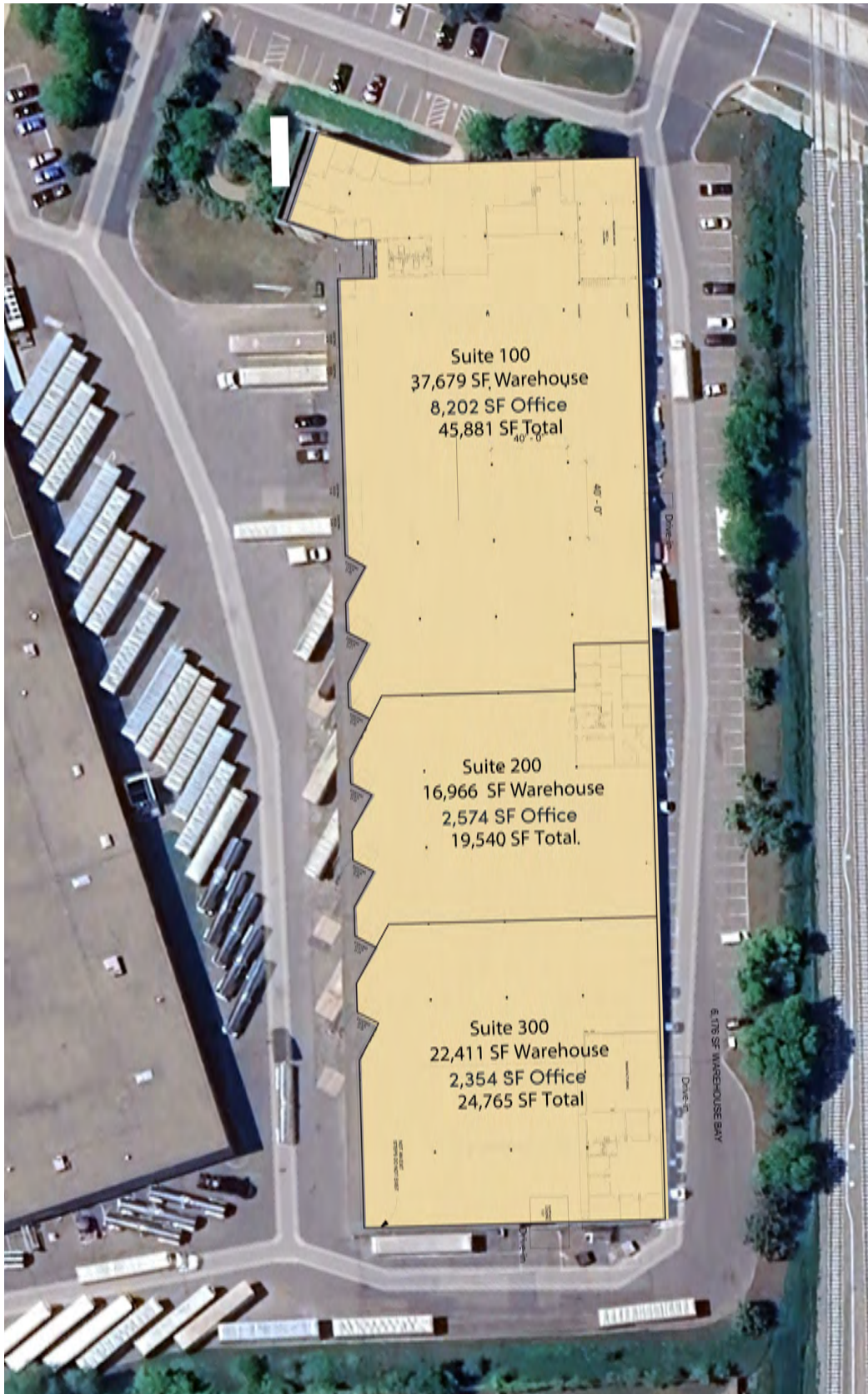
- Minneapolis/Saint Paul International (20 minutes/15.4 miles)
- Immediate access to the future Southwest LRT and Cedar Lake Regional Bike Trail



401 Eleventh Avenue South

Hopkins, Minnesota

Building Size: 90,186 SF | Building Availability: 90,186 SF

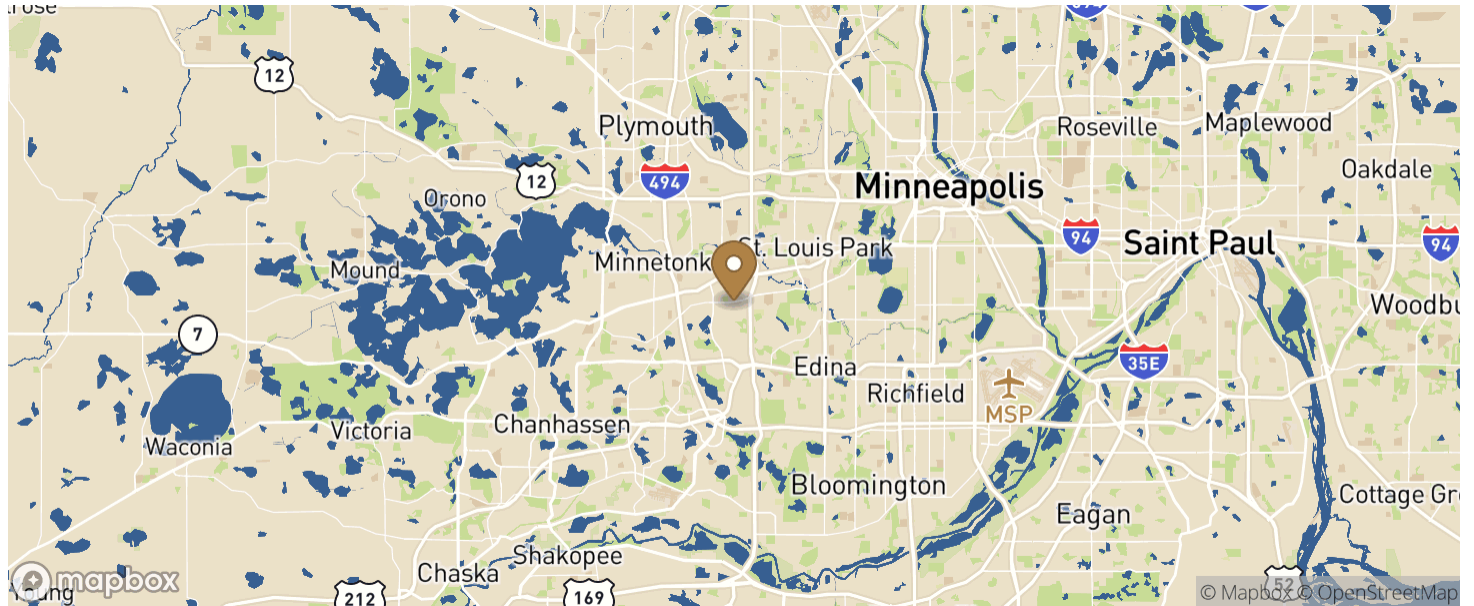


401 Eleventh Avenue South

Hopkins, Minnesota

Building Size: 90,186 SF | Building Availability: 90,186 SF

Location



Transportation

Major Highway

US Highway 169

3 min drive

1 miles

I-494

6 min drive

3 miles

Airport

Minneapolis/Saint Paul International

20 min drive

15.4 miles