

For Sale

8,123 SF | \$2.5M

Medical or General Office





60 Phifer Street

Asheville, North Carolina 28801

Property Overview

60 Phifer Street offers an excellent opportunity for a medical or general office user seeking a flexible, well-located Asheville property. Totalling 8,123 square feet across two levels, the building features multiple wide-open, adaptable areas on both the upper and lower levels, allowing for easy layout changes, reconfiguration, or future build-outs. Both levels also offer exterior access, enhancing functionality for a variety of office, clinical, administrative, or professional service uses. Conveniently positioned just off Asheland Avenue and McDowell Street, the property is minutes from walkable downtown Asheville and Mission Health. Situated on 1.22 acres, the site offers plentiful on-site parking with potential room to add more, plus two entrances from Phifer Street and an additional entrance from Tolula Lane.

Offering Summary

Sale Price:	\$2,500,000
Building Size:	8,123 SF
Zoning:	OB
Lot Size:	1.22 Acres

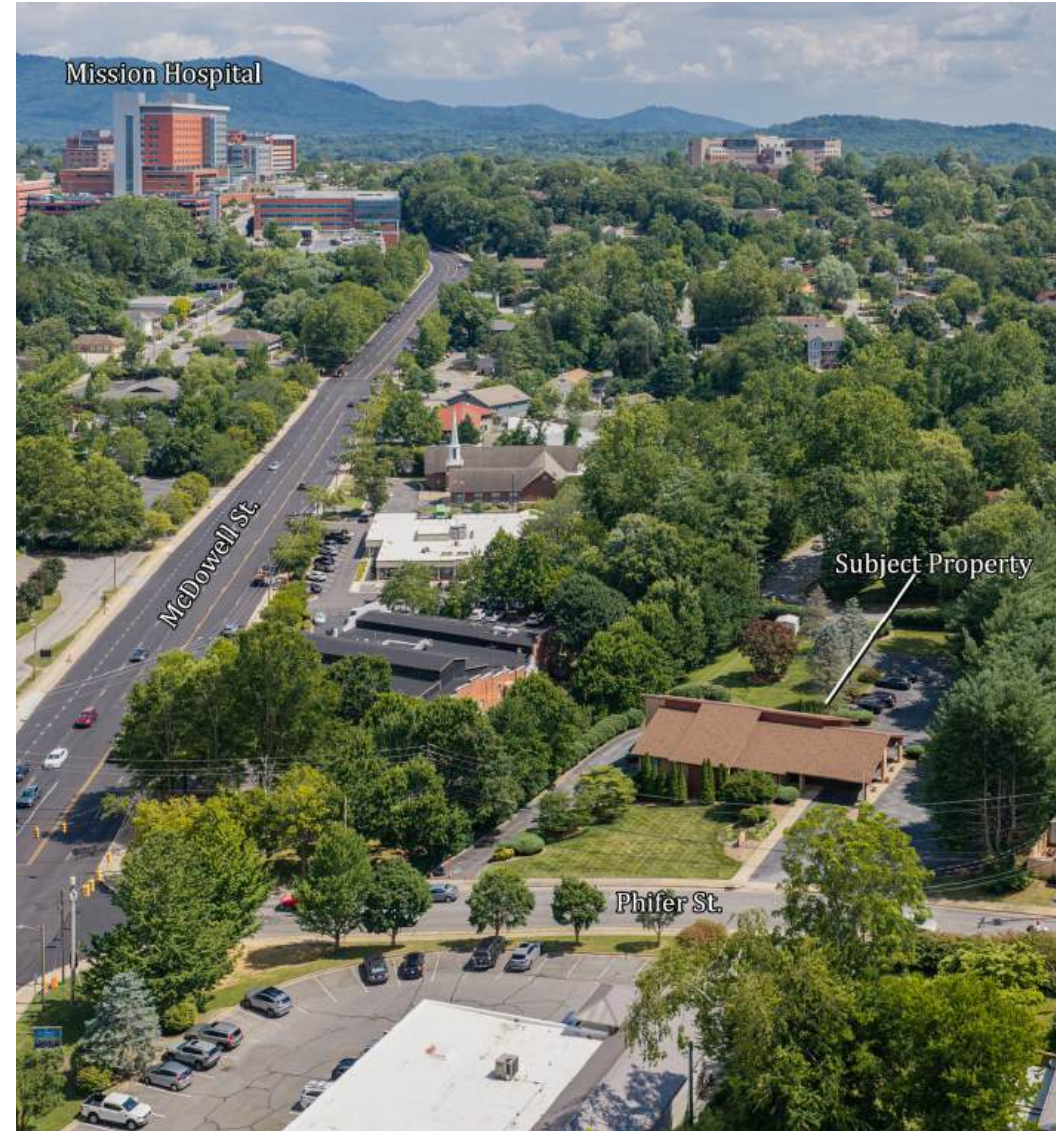
For More Information

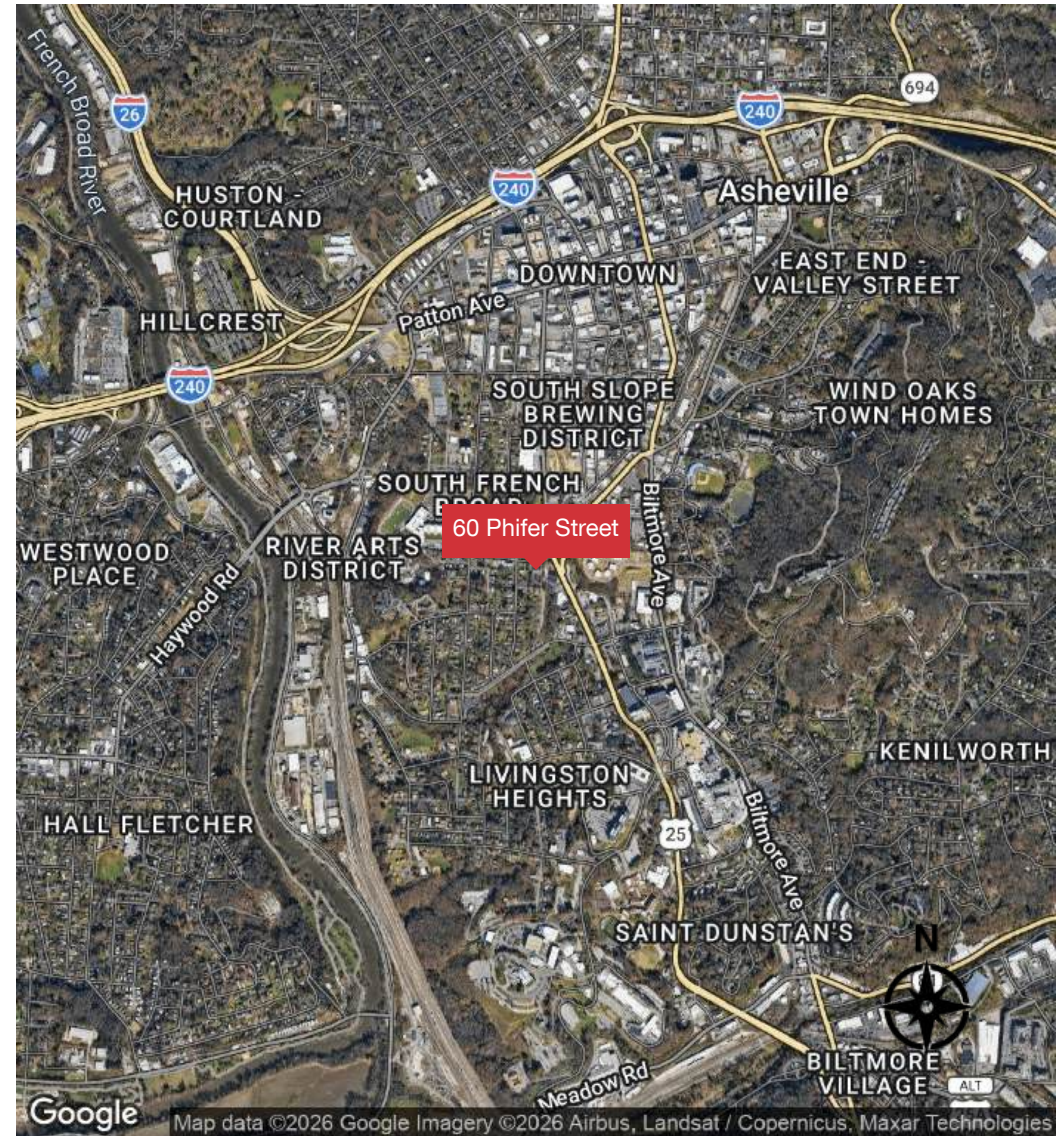
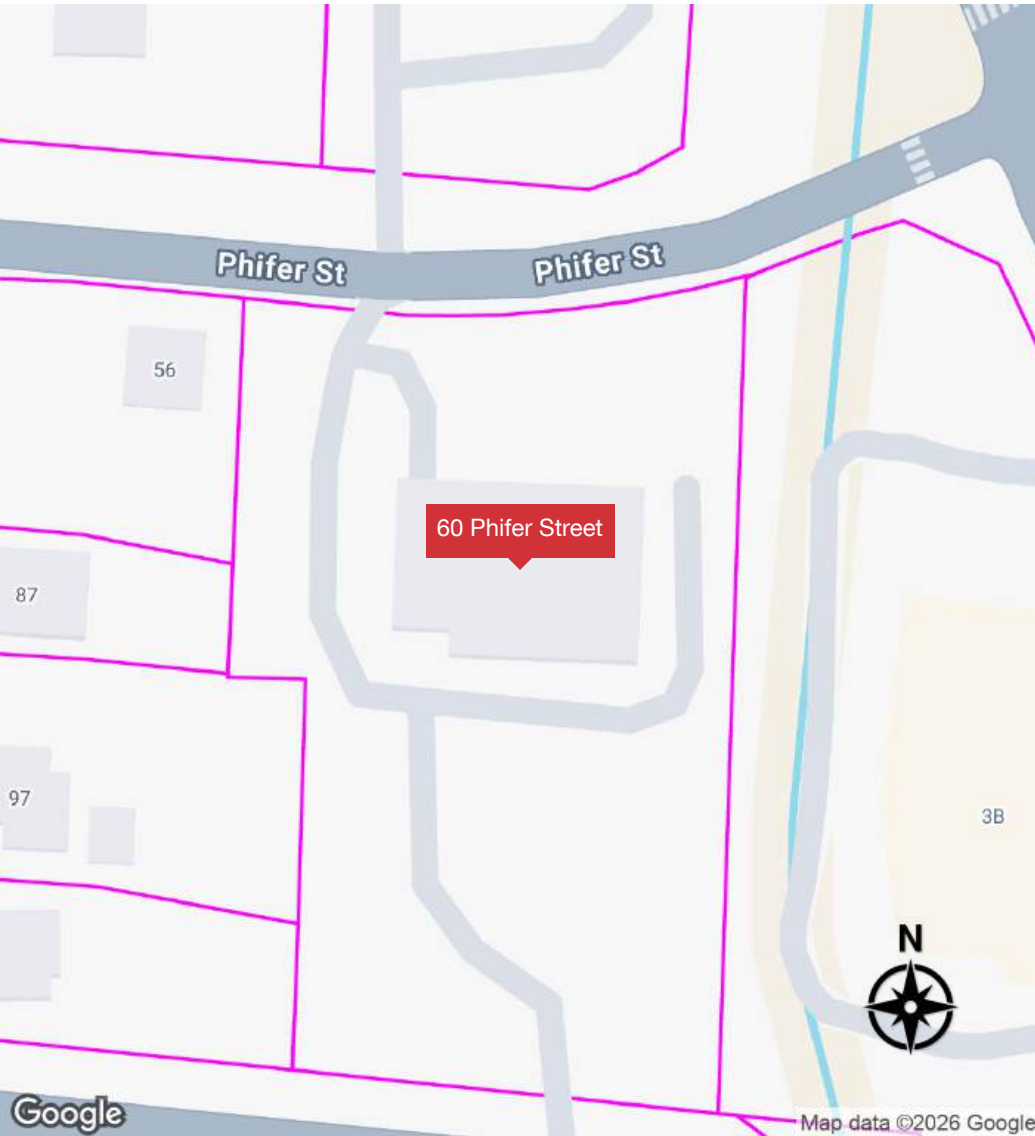


Jim Davis, SIOR

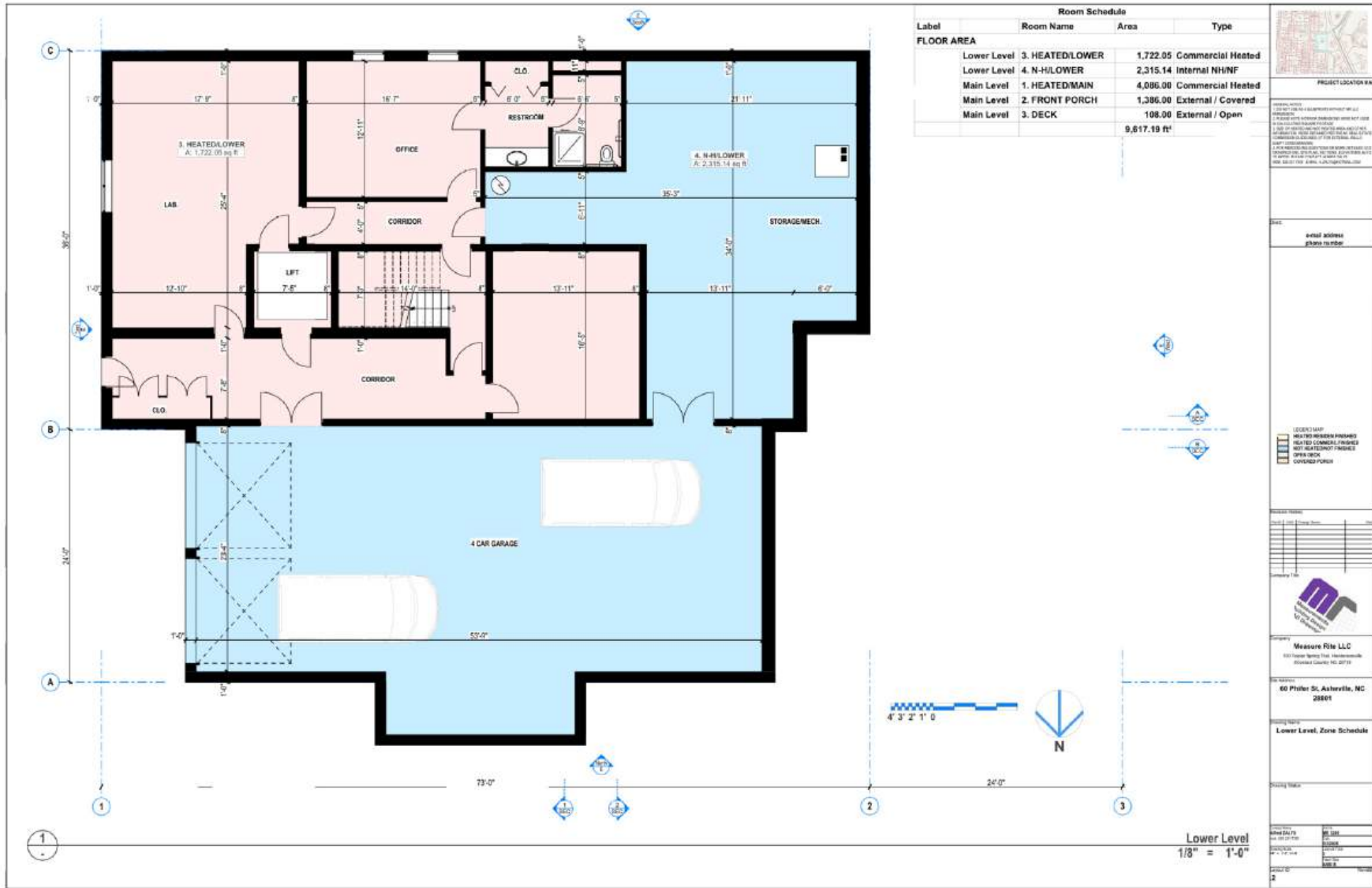
O: 330 718 3311

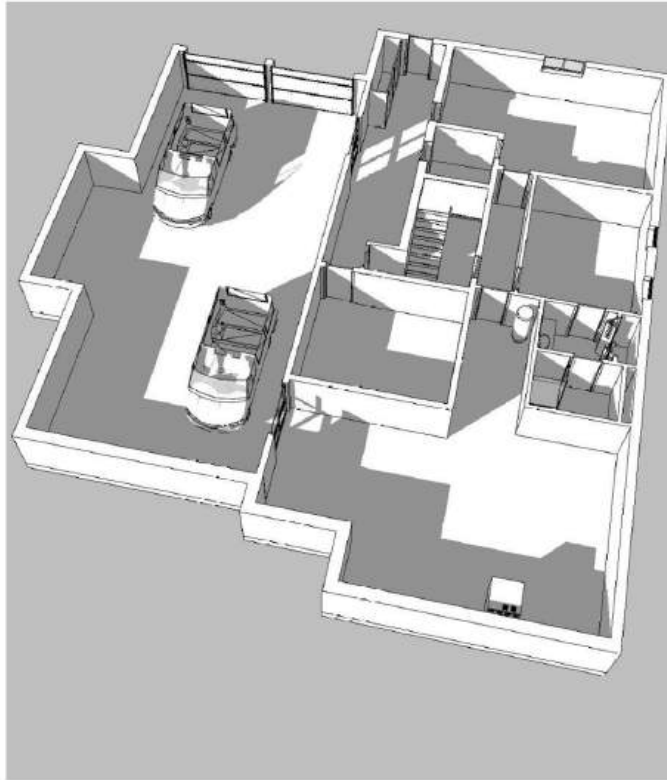
jdavis@naibeverly-hanks.com | NC #292479



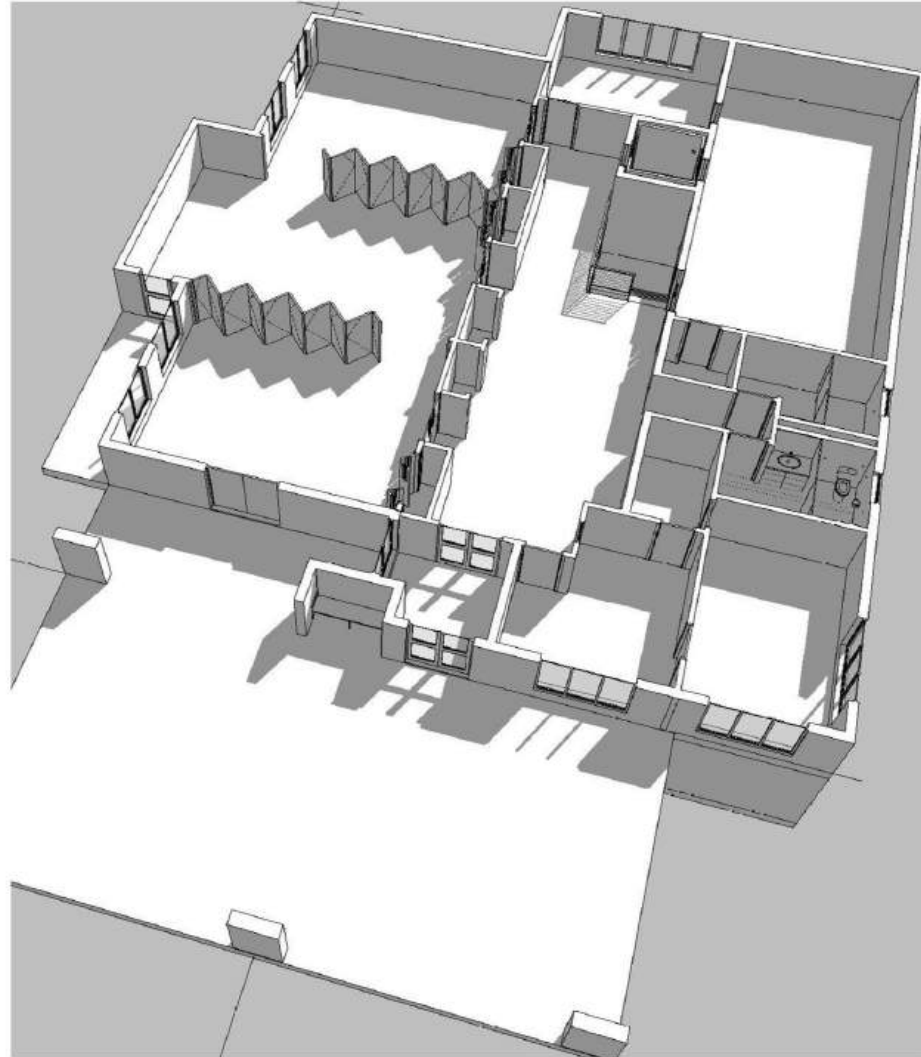








Generic Perspective / Lower



Generic Perspective / MAIN



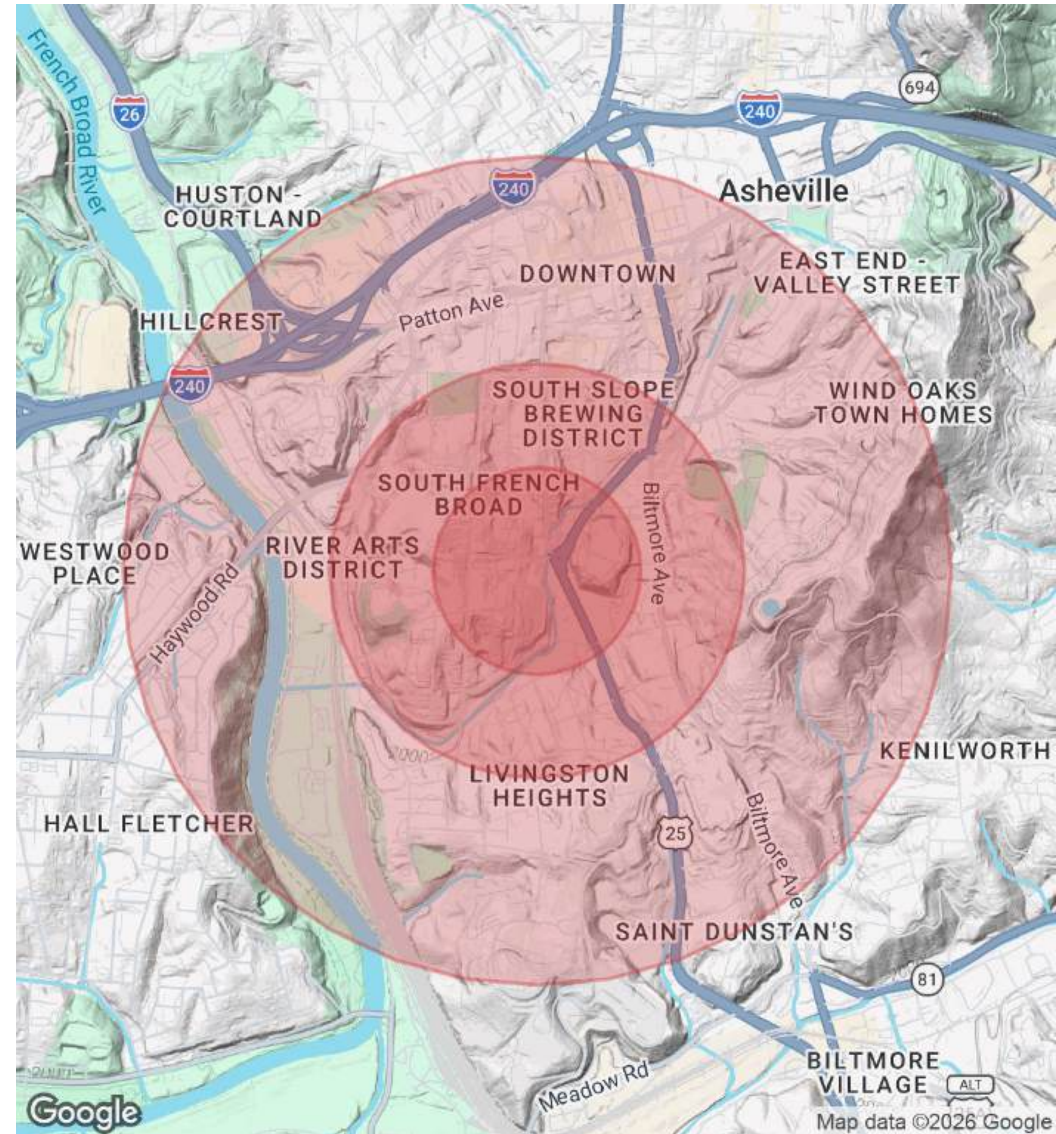




Population	0.25 Miles	0.5 Miles	1 Mile
Total Population	491	1,600	6,655
Average Age	54.7	49.6	44.1
Average Age (Male)	56.5	51.0	44.9
Average Age (Female)	54.1	49.4	45.3

Households & Income	0.25 Miles	0.5 Miles	1 Mile
Total Households	251	791	2,952
# of Persons per HH	2.0	2.0	2.3
Average HH Income	\$88,325	\$78,133	\$80,226
Average House Value	\$432,190	\$408,359	\$478,579

2023 American Community Survey (ACS)





For More Info
or a private tour...
Please Contact:

**Jim Davis, SIOR
Commercial Broker**

NAI Beverly-Hanks

SIOR Designee

North Carolina Economic Development Association Member

Phone: 330-718-3311

Email: Jdavis@NAIBeverly-Hanks.com



BROCHURE | 60 Phifer Street Asheville, NC 28801

We obtained the information above from sources we believe to be reliable. However, we have not verified its accuracy and make no guarantee, warranty or representation about it. It is submitted subject to the possibility of errors, omissions, change of price, rental or other conditions, prior sale, lease or financing, or withdrawal without notice. We include projections, opinions, assumptions or estimates for example only, and they may not represent current or future performance of the property. You and your tax and legal advisors should conduct your own investigation of the property and transaction.