



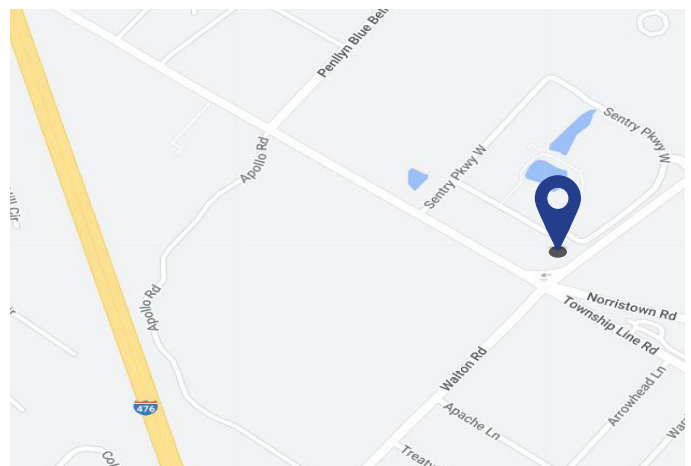
## VEVA 17 1777 Sentry Park West Blue Bell, PA 19422

## Sublease Available

### Space Profile

<b>Premises</b>	5,157 RSF on the 2nd floor (Suite 210) 5,334 RSF on the 2nd floor (Suite 215) 14,546 RSF on the 4th floor (Suite 400)
<b>Rental Rate</b>	Negotiable, Full Service
<b>Built/Renovated</b>	1972 / 2006
<b>Building Class</b>	Class A
<b>Availability</b>	Within 30 Days
<b>Term</b>	Through July 31, 2027
<b>Parking</b>	4/1,000 SF
<b>Submarket</b>	Blue Bell

### Map



### Features & Amenities

- Collaborative outdoor workspaces
- Common area amenities include modern, full-service cafe and lounge, plus state-of-the-art conference and training rooms
- New boulevard entrance & campus signage
- 24/7/365 access
- Close proximity to I-476, I-276, Routes 202, 73 & 309
- Convenient to restaurants & shopping
- Short walk to SEPTA Bus Routes 98 & 95

### For More Information

**Cresa**  
Three Logan Square  
1717 Arch Street, #1305  
Philadelphia, PA 19103  
[cresa.com/philadelphia-pa](http://cresa.com/philadelphia-pa)



**Scott Wingrat**  
410.777.8235  
[swingrat@cresa.com](mailto:swingrat@cresa.com)



**Ted Garrity**  
610.825.9618  
[tgarrity@cresa.com](mailto:tgarrity@cresa.com)

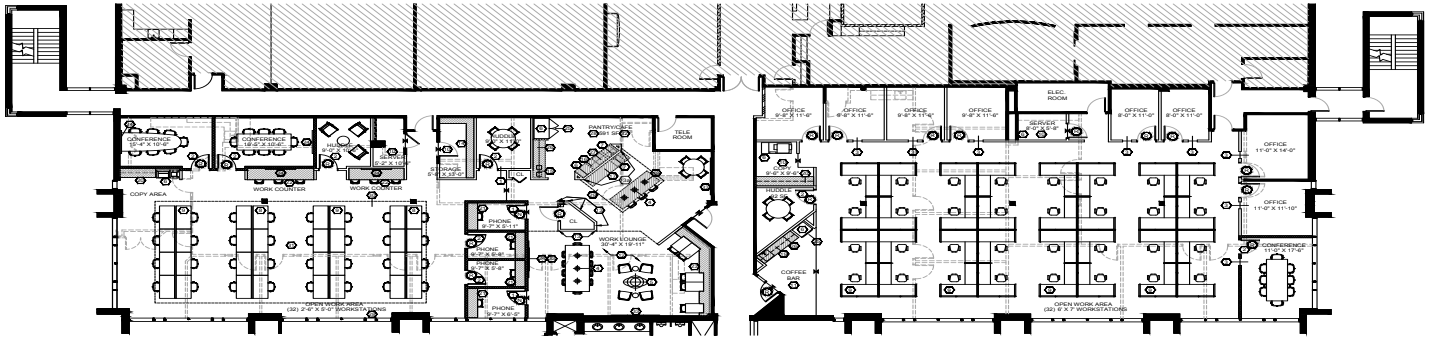
Even though obtained from sources deemed reliable, no warranty or representation, express or implied, is made as to the accuracy of the information herein, and it is subject to errors, omissions, change of price, rental or other conditions, withdrawal without notice, and to any special listing conditions imposed by our principals.





**VEVA 17**  
**1777 Sentry Park West**  
**Blue Bell, PA 19422**

**Suite 210 - 2nd Floor - 5,157 SF**  
**Suite 215 - 2nd Floor - 5,334 SF**



**Suite 400 - 4th Floor - 14,546 SF**



## For More Information

Cresa  
 1954 Greenspring Drive  
 Suite 501  
 Timonium, MD 21093  
[cresa.com/baltimore](http://cresa.com/baltimore)



**Scott Wingrat**  
 410.777.8235  
[swingrat@cresa.com](mailto:swingrat@cresa.com)



**Ted Garrity**  
 610.825.9618  
[tgarrity@cresa.com](mailto:tgarrity@cresa.com)