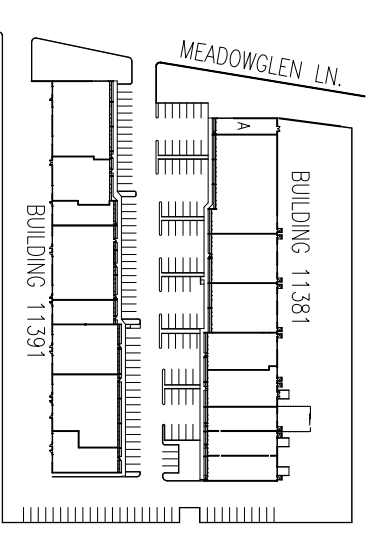


MEADOWGLEN BUSINESS PARK
11381 MEADOWGLEN LN, SUITE A
HOUSTON TEXAS 77082

MAP 



SITE PLAN 

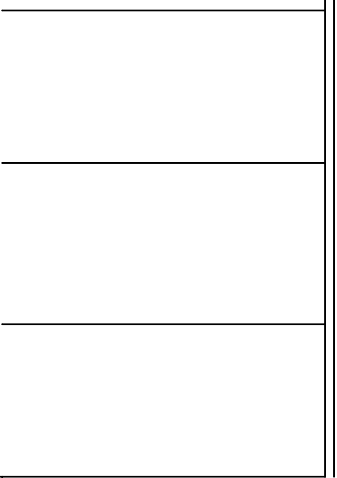


BUILDING SUMMARY

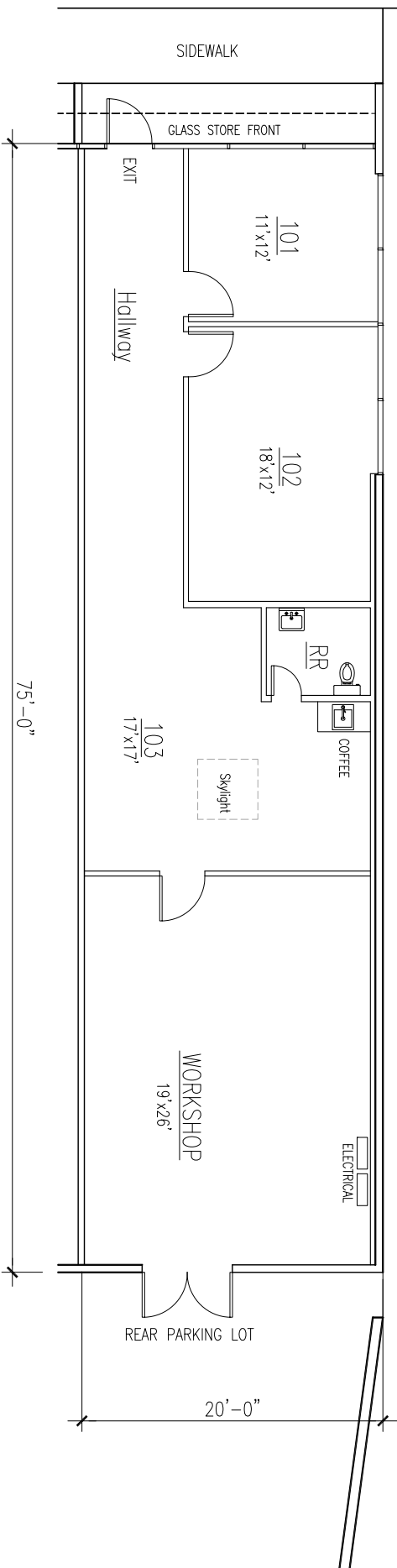
OFFICE AREA: 965 SQ. FT.
 WORKING SHOP: 520 SQ. FT.
 TOTAL AREA: 1,475 SQ. FT.

BUILDING FEATURES

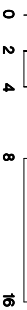
MASTER PLANNED BUSINESS PARK
 CONCRETE TILT WALL CONSTRUCTION
 SEMI DOCK HIGH REAR LOADING DOORS
 14' AVERAGE CLEAR HEIGHT
 ALL CONCRETE PAVING



PARKINGS



SUITE A FLOOR PLAN



 NORTH

These listings are offered subject to error, omission, prior lease, or withdrawal without notice.