



2507 Harrison Ave Suite 200

Panama City, Florida 32405

Property Highlights

- Great location proximate to HCA Gulf Coast Medical and Ascension Sacred Heart
- On site surface parking
- High end interior finishes
- Space can be divided for multiple providers
- Dual reception areas
- 3 executive offices
- 4 bathrooms
- 5 exams rooms with plumbing
- X-ray room
- 3,500 RSF; 3,000 USF

Offering Summary

Sale Price:	\$825,000
Lease Rate:	\$25.00 RSF/yr (NNN)

For More Information

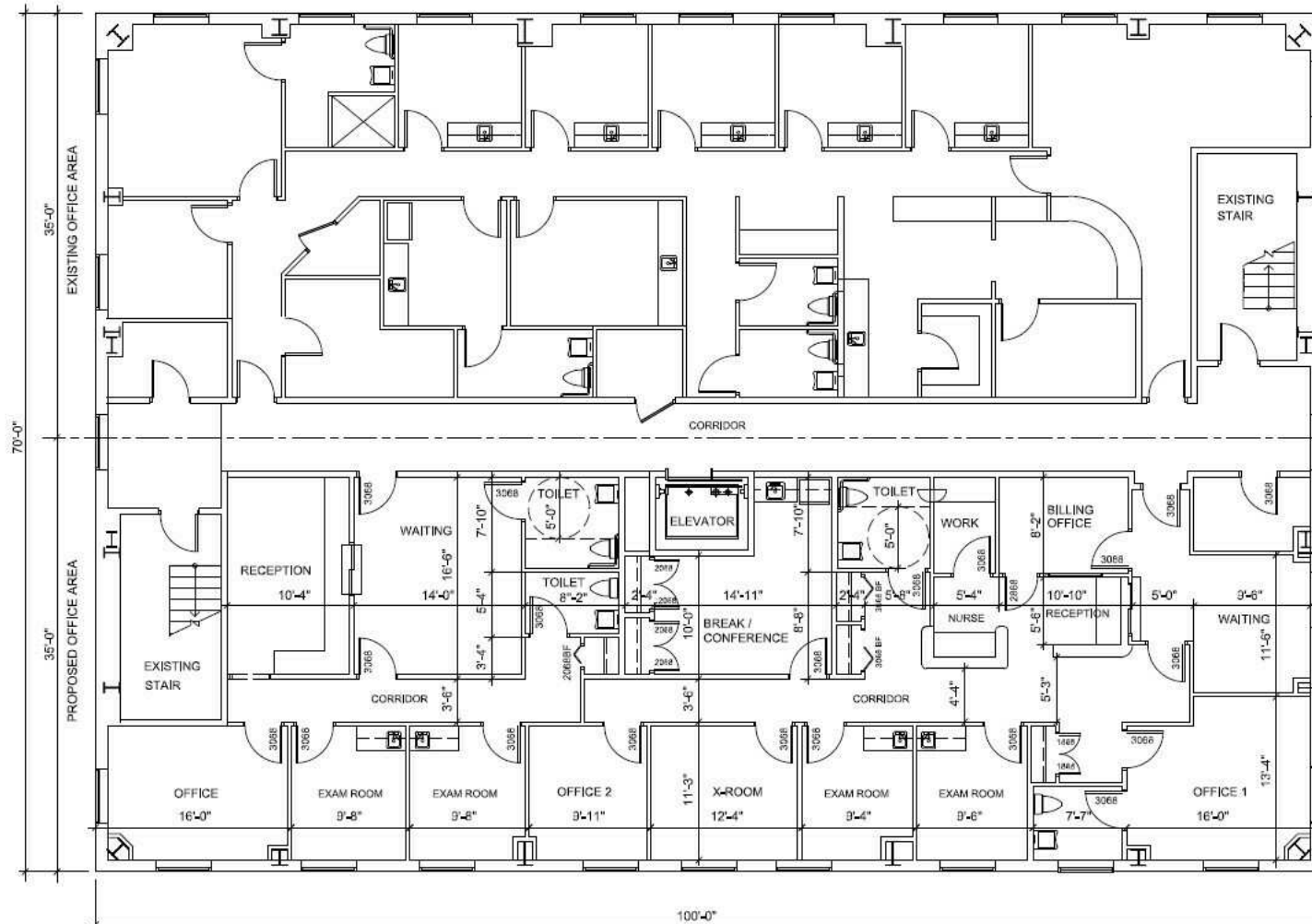
Brent Faison

C: 850 814 4490
brent@talcor.com

Patrick Jones, SIOR

C: 850 814 5878
patrick@talcor.com





- ALL WORK SHALL COMPLY WITH THE FOLLOWING:
- 2010 FLORIDA BUILDING CODE EXISTING BUILDING, SECTION 404 ALTERATION-LEVEL 2.
 - 2010 ADA ACCESSIBILITY GUIDELINES (ADAAG) SECTION 4.1.6. ACCESSIBLE BUILDINGS: ALTERATIONS

SECOND FLOOR PLAN

SCALE: 1/4"=1'-0"

Richard Molenaar
 ARCHITECT
 AP-0006365

PROJECT NAME	
SECOND FLOOR BUILDING "B"	
INTERIOR ALTERATIONS PLAN	
PANAMA CITY, FLORIDA	
SHEET TITLE	
FLOOR PLAN	
PROJECT NO.	DATE ISSUED
DRAWN BY	DESIGNED BY
DATE	SCALE
5-7-2012	A1.1

