



# 1.4 ± ACRES | FOR SALE / LEASE OR BTS

SE/C NW 164TH & N MAY AVE., OKLAHOMA CITY, OK 73013

**MICHAEL ALMARAZ**

malmazar@newmarkrp.com

C: 405.990.9918

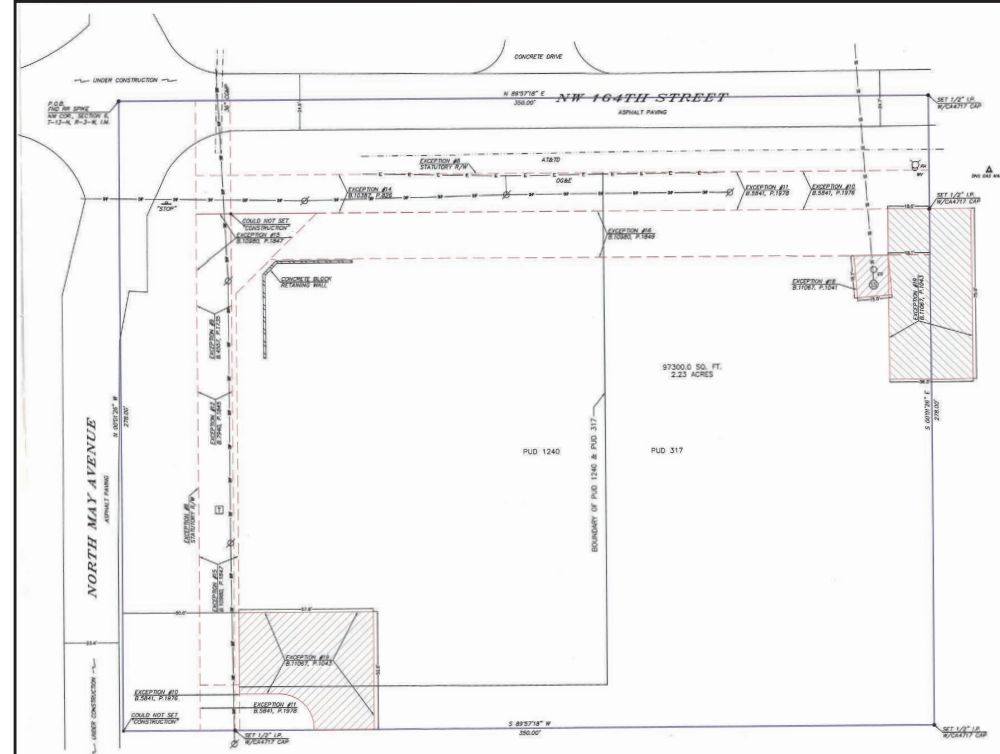
**LOUIS ALMARAZ**

lalmazar@newmarkrp.com

C: 405.760.4774

**NEWMARK**  
ROBINSON PARK

# 1.4 ± ACRES / FOR SALE OR GROUND LEASE



## DETAILS

<b>Sale Price</b>	\$1,951,488
<b>Ground Lease</b>	Contact Broker
<b>Lot Size</b>	1.4± Acres

## HIGHLIGHTS

Hard corner offering easy access with frontage and great visibility along both NW 164th St. & N May Ave.

Site is surround by national retailers and average household incomes over \$160,000 within 1 mile.

## SNAPSHOT



**Traffic Count**  
N May Ave & NW 164th  
35,600 VPD



**Avg. HH Income**  
3-mi Radius  
\$140,957



**Population**  
3-mi Radius  
74,475



**SITE**

**FENWICK SHOPPING CENTER**  
 Auto Zone, Allstate, State Farm

**SOS HARU JAPANESE IZAKAYA**  
 SUSHI, RAGU, STARBUCKS COFFEE, EASTERN BEER

**HOMETOWN INSURANCE AGENTS**  
 Edward Jones, Dry Creek, The Brokerage

**RCB BANK**  
 Access Medical Centers Urgent Care

**LEGACY BANK**  
 Barnes & Noble, Olive Garden, Salsgras

**QUAIL SPRINGS MALL**  
 Target, Hobby Lobby, David's Bridal, Peppercorn

**NEWMARK ROBINSON PARK**

211 N. Robinson, Ste 600N OKC, OK, 73102 | for more information, visit us at [NEWMARKRP.COM](http://NEWMARKRP.COM)  
 110 W. 7th, Ste 2710 Tulsa, OK, 74119

The information contained herein was obtained from sources believed reliable; however, Newmark Robinson Park makes no guarantees, warranties or representations as to the completeness or accuracy thereof. The presentation of this property is submitted subject to errors, omissions, change of price or conditions prior to sale or lease, or withdrawal without notice. Independently Owned and Operated.