



FOR LEASE

Office Suites

259 Veterans Lane
Doylestown Borough, Bucks County, PA

COMMERCIAL • INDUSTRIAL • INVESTMENT



PRESENTED BY: Kurt Eisenschmid, CCIM — Penn's Grant Realty Corporation
2005 S Easton Rd, STE 306, Doylestown, PA • 215-489-3800 x3 • kurt@pgrealty.com • www.pgrealty.com

PROPERTY SPECIFICATIONS

Suite 101/103 2,562± RSF (divisible to 1,184 RSF & 1,378 RSF) - 1st Floor

Open Feel High End/High Tech Glass Finishes

Lease Price: \$23 RSF - plus utilities & interior cleaning

Suite 201 2,562± RSF - 2nd Floor

Open Feel High End/High Tech Glass Finishes

Lease Price: \$23 RSF - plus utilities & interior cleaning

Suite 202 2,168± RSF - 2nd Floor

Open Feel High End/High Tech Glass Finishes

Lease Price: \$23 RSF - plus utilities & interior cleaning

Suite 001 911± RSF

Open floor plan

Lease Price: \$20.50 RSF - plus utilities & interior cleaning

Suite 002 Furnished conference room 372± RSF

Water: Public

Sewer: Public

Utilities: PECO

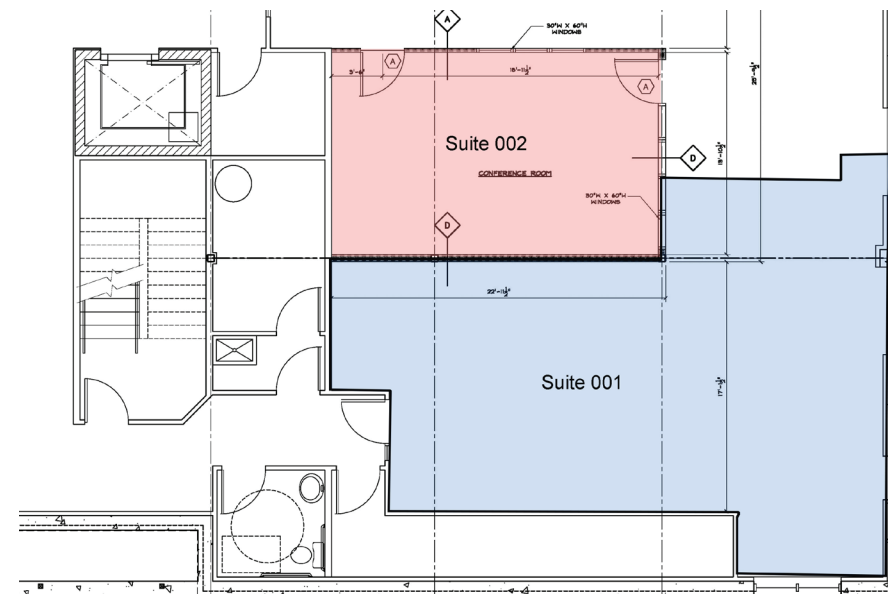
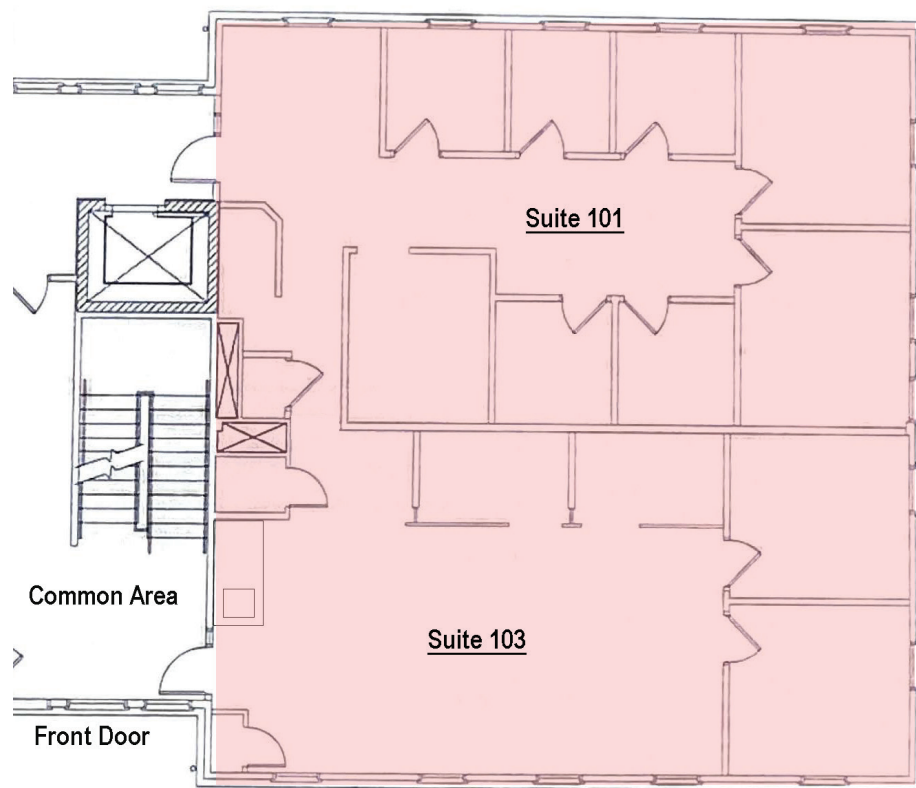
Municipality: Doylestown Borough

Zoning: C - Commercial



PROPERTY HIGHLIGHTS

- **Great Doylestown Borough Location with Parking**
- **Restaurants & Retail Service Within One Block**
- **Moments from 611 By-Pass & 202 Parkway**
 - **Elevator Served**
- **Excellent Window Lines & Natural Light**



Suite 001 - 911± RSF & Suite 392± RSF

Suite 103- 1st Floor - 2,562± RSF

Can be divisible into two units consisting of:

- Suite 103 - 1,184 RSF
- Suite 101 - 1,378 RSF

Suite 103 - 1st Floor -2,562± RSF



Suite 001 - 911± RSF - Open Floor Plan



Suite 001

Suite 002 - 372± RSF - Furnished Conference Room



Suite 002



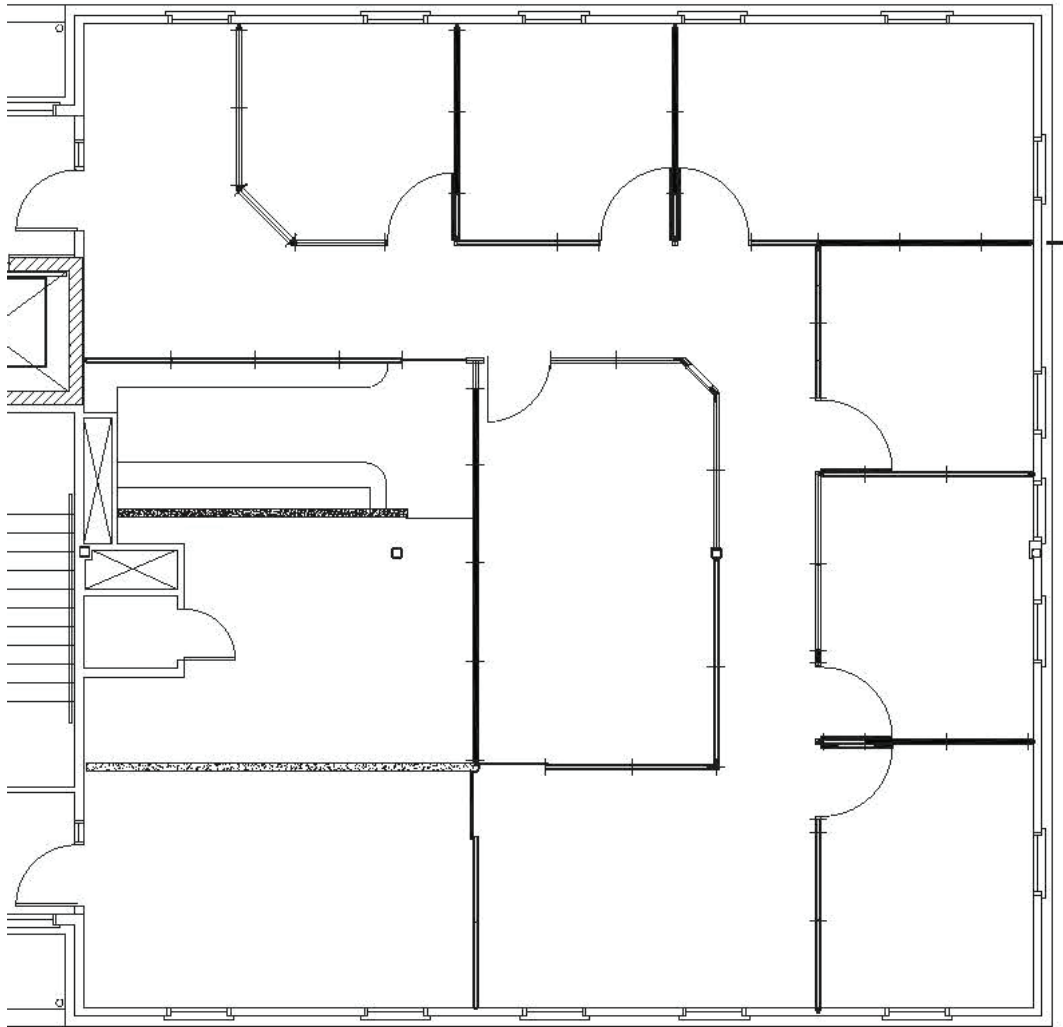
Suite 001



Suite 001



Suite 001

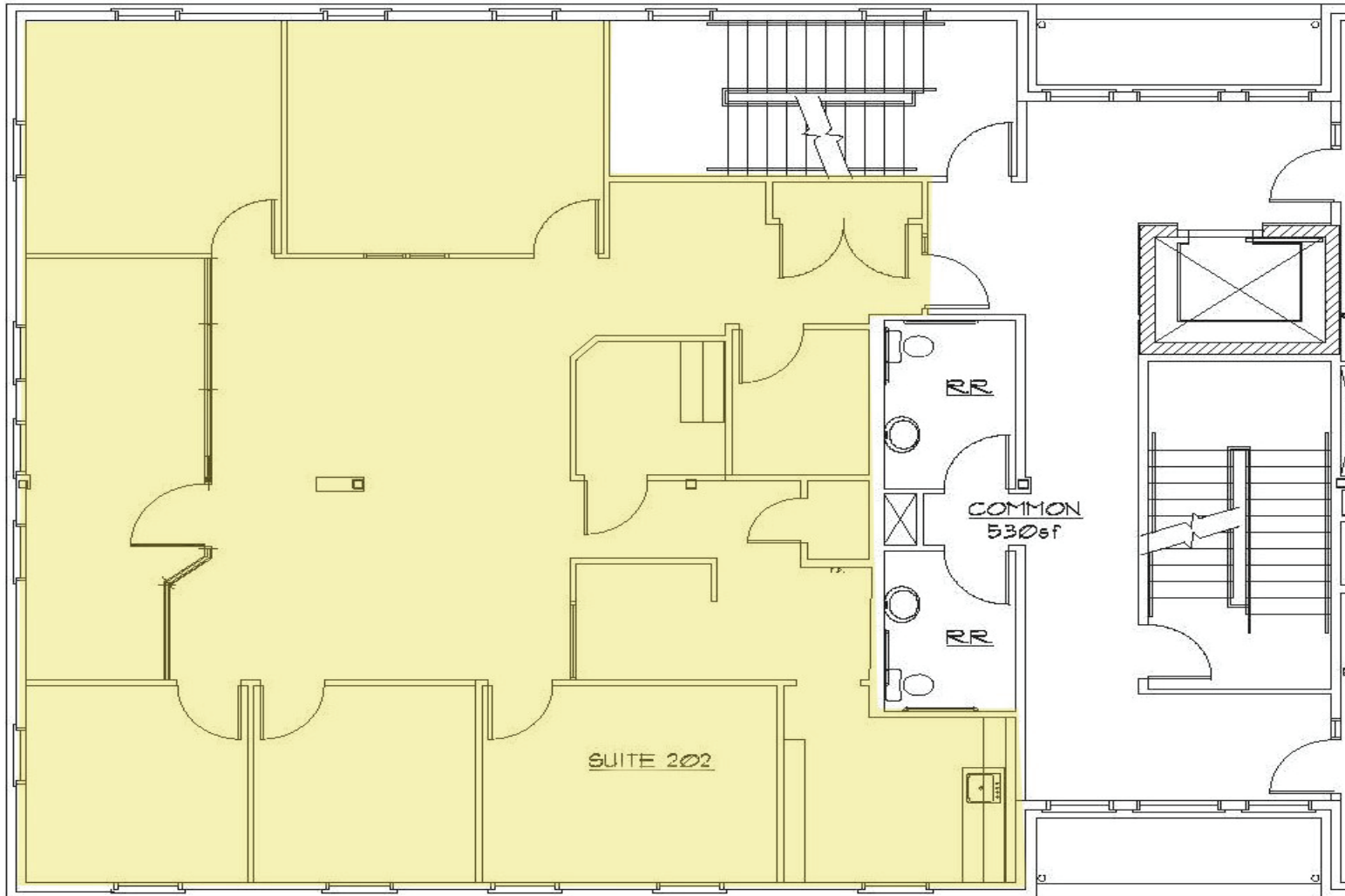


Suite 201 First Floor - 2,562± RSF



Suite 201 2nd Floor - 2,562± RSF - Private offices, conference room, kitchen





Suite 202 First Floor - 2,168± RSF

Suite 202 2nd Floor - 2,168 ± RSF - Private offices, conference room



