

26090 TWENTY-THREE MILE ROAD
CHESTERFIELD TWP., MICHIGAN

INDUSTRIAL FOR LEASE
200,000 - 711,547 Square Feet Available



**SIGNATURE
ASSOCIATES**
KNOW SIGNATURE | KNOW RESULTS



PROPERTY FEATURES

- 200,000 – 711,547 square feet available
- Office space to suit
- 22' - 36' clear height
- (6) 12' x 14' grade level doors
- (24) truckwells
- (1) 50-Ton, (1) 30-Ton, and (1) 20-Ton crane
- Clean manufacturing or distribution facility
- Zoned heavy industrial
- Ample trailer parking
- Lease Rate: \$6.50/sq. ft. NNN



For more information, please contact:

JOE HAMWAY
(248) 948 0113
jhamway@signatureassociates.com

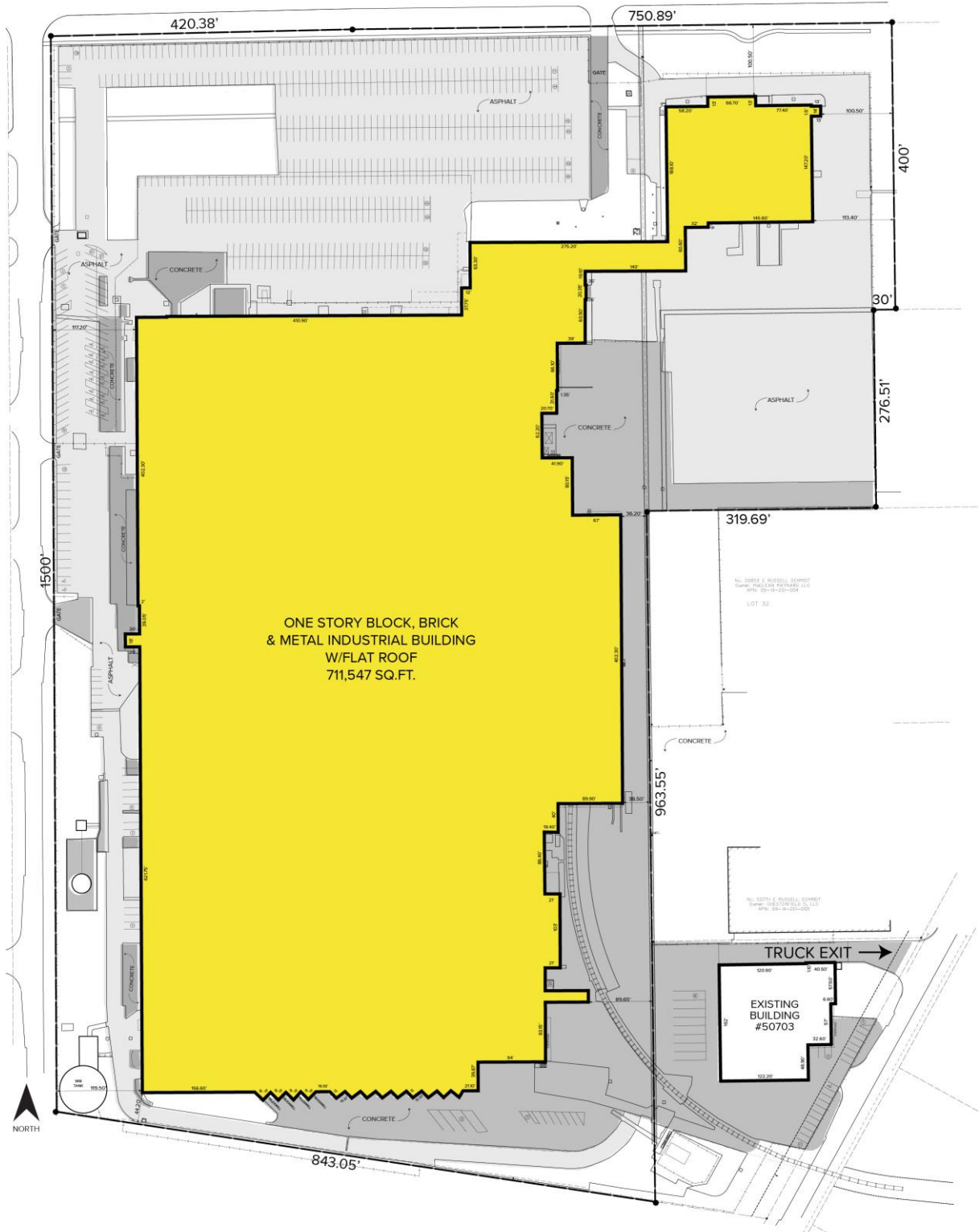
GREG HUDAS
(248) 799 3162
ghudas@signatureassociates.com

SIGNATURE ASSOCIATES
One Towne Square, Suite 1200
Southfield, MI 48076
www.signatureassociates.com

26090 Twenty-Three Mile Road – Chesterfield Twp., MI Industrial For Lease

200,000 -
711,547
Square Feet
AVAILABLE

Site Plan



For more information, please contact:

JOE HAMWAY
(248) 948 0113
jhamway@signatureassociates.com

GREG HUDAS
(248) 799 3162
ghudas@signatureassociates.com

SIGNATURE ASSOCIATES
One Towne Square, Suite 1200
Southfield, MI 48076
www.signatureassociates.com

26090 Twenty-Three Mile Road – Chesterfield Twp., MI Industrial For Lease

200,000 -
711,547
Square Feet
AVAILABLE

Floor Plan



For more information, please contact:

JOE HAMWAY
(248) 948 0113
jhamway@signatureassociates.com

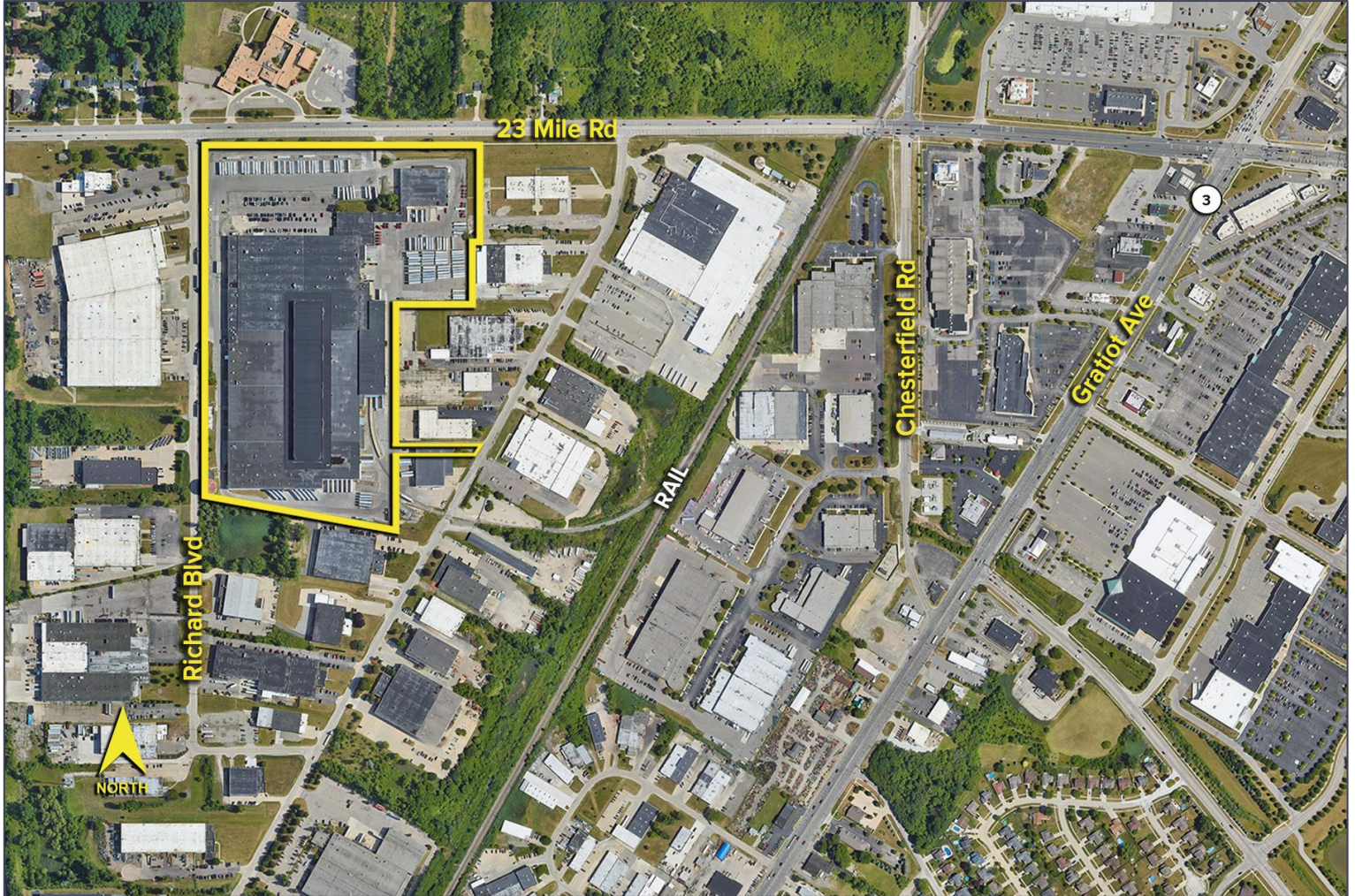
GREG HUDAS
(248) 799 3162
ghudas@signatureassociates.com

SIGNATURE ASSOCIATES
One Towne Square, Suite 1200
Southfield, MI 48076
www.signatureassociates.com

26090 Twenty-Three Mile Road – Chesterfield Twp., MI Industrial For Lease

200,000 -
711,547
Square Feet
AVAILABLE

Aerial



For more information, please contact:

JOE HAMWAY
(248) 948 0113
jhamway@signatureassociates.com

GREG HUDAS
(248) 799 3162
ghudas@signatureassociates.com

SIGNATURE ASSOCIATES
One Towne Square, Suite 1200
Southfield, MI 48076
www.signatureassociates.com