



# Industrial Yard Space | For Lease

## 4620 S. Apple St.

**Boise, ID 83716**

### Property specifications

Available Acres:	1.0 to 10.93 Acres
Lease Rate:	\$0.08 - \$0.12/SF/Mo + NNN
Term:	Negotiable
Zoning:	M-1D

### Property Highlights

- Fenced & Secured Industrial Yard
- Located in the Southeast Boise Industrial Submarket
- Convenient I-84 Access, and Close Proximity to the Boise Airport
- Rail Spur/Access
- On-Site Utilities

**Brandon Rawlins**  
+1 208 982 2427  
brandon.rawlins@jll.com

**Gavin Williams**  
+1 208 389 7713  
gavin.williams@jll.com

**Bronson Rawlins**  
+208 917 1610  
bronson.rawlins@jll.com







[Click for Street View](#)





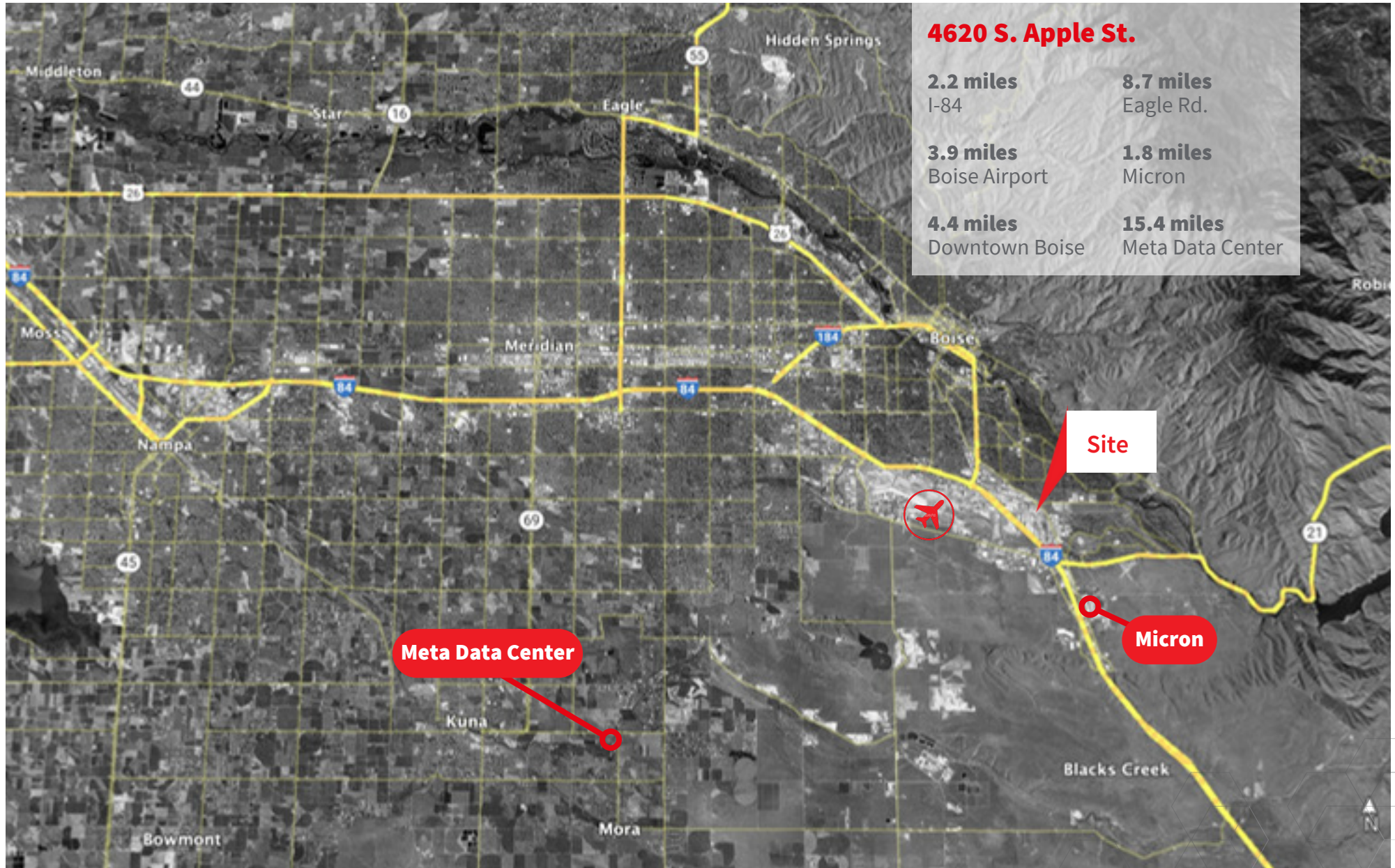
[Click for drone video](#)







# Regional Map





# Detailed Overview Map



## JLL

**Brandon Rawlins**  
+1 208 982 2427  
brandon.rawlins@jll.com

**Gavin Williams**  
+1 208 389 7713  
gavin.williams@jll.com

**Bronson Rawlins**  
+1 208 917 1610  
bronson.rawlins@jll.com

Although information has been obtained from sources deemed reliable, JLL does not make any guarantees, warranties or representations, express or implied, as to the completeness or accuracy as to the information contained herein. Any projections, opinions, assumptions or estimates used are for example only. There may be differences between projected and actual results, and those differences may be material. JLL does not accept any liability for any loss or damage suffered by any party resulting from reliance on this information. If the recipient of this information has signed a confidentiality agreement with JLL regarding this matter, this information is subject to the terms of that agreement. ©2023. Jones Lang LaSalle IP, Inc. All rights reserved. ©2023 Jones Lang LaSalle Brokerage, Inc. | 950 W Bannock St Suite 1100, Boise, Idaho 83702