

# 1548 BOND ST | NAPERVILLE

## FOR LEASE



## SINGLE STORY OFFICE SUITES AVAILABLE

### BUILDING HIGHLIGHTS

Available Space: 1,128 SF

Asking Rate: \$21.00 PSF/YR MG

Single Story with Common Area Restrooms

Contemporary Office Spaces

Parking Ratio: 4.45/1,000 SF

Built in 2004



**VERSA**  
REAL ESTATE SERVICES



# AREA AMENITIES

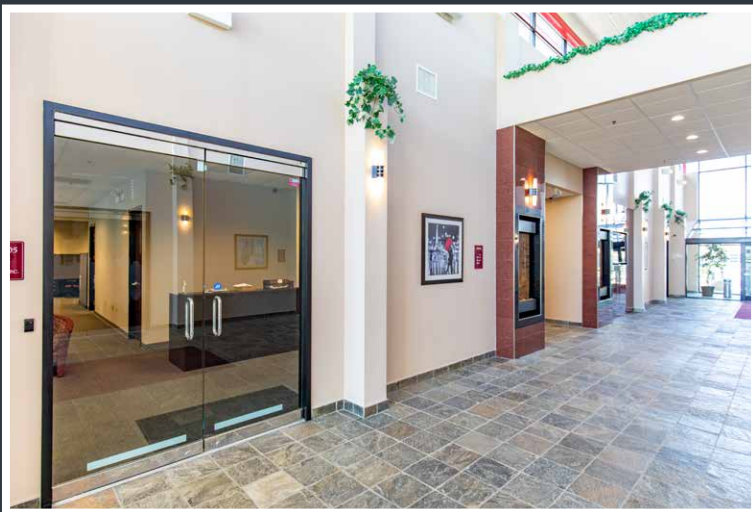
Close Proximity to the I-88/Route 59 Exit

Large Employment Base in Naperville/Aurora

Block from Pace Stop

Minutes to Route 59 Metra

Numerous Fast Serve and Sit Down Dining Nearby



CALL OR TEXT FOR MORE INFO:



**JOHN MILLNER, CCIM**  
PRINCIPAL  
630.480.6342  
JMillner@VersaRES.com



**RYAN MOEN, SIOR**  
PRINCIPAL  
DESIGNATED MANAGING BROKER  
630.480.6346  
RMoen@VersaRES.com



**TOBY GARDNER**  
ASSOCIATE  
630.480.6017  
TGardner@VersaRES.com

**VERSA**  
REAL ESTATE SERVICES