

**240** W. Passaic  
Street  
MAYWOOD, NEW JERSEY

**FOR LEASE**  
**±1,142 SF OFFICE**  
**GENERAL/MEDICAL SPACE**



## Property Features

- Total Building Size: ±18,240 SF
- Suite 9: ±1,142 SF
- Four (4) Offices including one large open room, conference room and bathroom
- Two (2) floors
- Elevator in building
- Lot Size: 1.07 Acres
- Ample parking available on lot
- Fully air conditioned building
- 1.6 Miles from HUMC
- Excellent highway convenience, one-half block from Rt. 17
- Curbside NJ Transit bus on same block

### INQUIRE FOR LEASE RATE





Andrew Somple, SIOR  
Senior Vice President

201 488 5800 x151  
asomple@naihanson.com

Jessica Curry, CCIM

201 488 5800 x199  
jcurry@naihanson.com

**NAI James E. Hanson**  
COMMERCIAL REAL ESTATE SERVICES, WORLDWIDE

FOLLOW US!     | Offices: Teterboro | Parsippany | Allentown • [naihanson.com](http://naihanson.com) | [naisummit.com](http://naisummit.com) • Member of NAI Global with 325+ Offices Worldwide

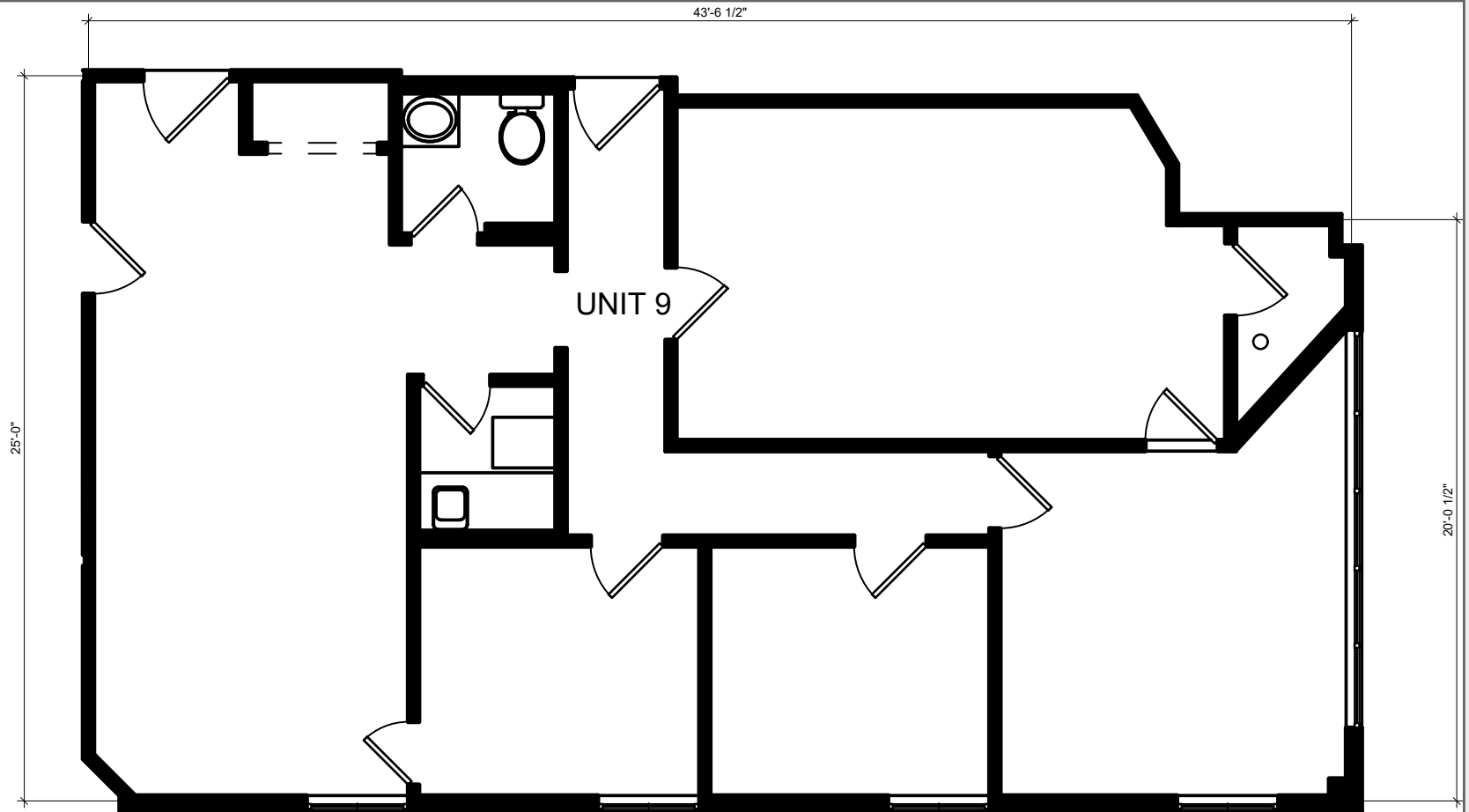
#### SERVICES OFFERED

Brokerage • Property Management • Corporate Services • Financing • Logistics • Healthcare • Tenant Representation • Cold Storage • Investment Services

The information contained herein has been obtained from sources considered to be reliable, but no guarantee of its accuracy is made by NAI James E. Hanson

**240** W. Passaic Street  
MAYWOOD, NEW JERSEY

# SUITE 9 - SECOND FLOOR FLOOR PLAN



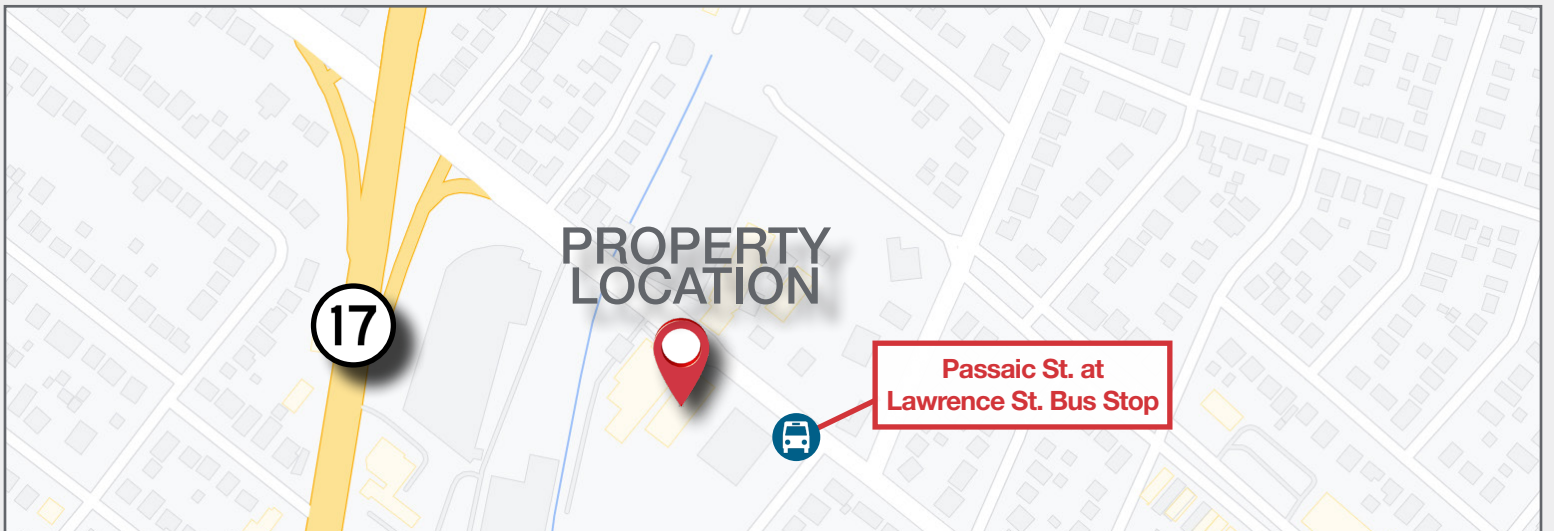
240 W Passaic Street  
Maywood, NJ

1,142 RSF



**240** W. Passaic  
Street  
MAYWOOD, NEW JERSEY

**AERIAL  
& HIGHWAY MAP**



**NAI** James E. Hanson  
COMMERCIAL REAL ESTATE SERVICES, WORLDWIDE

The information contained herein has been obtained from sources considered to be reliable, but no guarantee of its accuracy is made by NAI James E. Hanson