



INDUSTRIAL WAREHOUSE & HEADQUARTERS

Prime Opportunity in Fishers, IN



7601 E 88th Place



Prime Industrial Warehouse & Headquarters Opportunity – Fishers, IN

This versatile manufacturing-ready facility in Fishers, IN offers immediate access to I-69 and I-465, ensuring seamless logistics and connectivity. Featuring a 3,100 SF two-story office buildout with five private offices and one conference room, this space is ideal for a corporate headquarters. The expansive warehouse includes ample power capacity and adaptable loading docks, making it perfect for manufacturing, distribution, or a growing business. Located in one of Indiana's fastest-growing markets, this property provides efficient transportation links and proximity to key amenities.



IDEAL LOCATION WITH EXCELLENT VISIBILITY & EASY ACCESSIBILITY



Total Building Size: ±30,000 SF



Office Space: 3,100 SF, including (5) private offices and (1) conference room



Loading & Access: (3) Drive-in bays & (1) dock door for efficient loading & distribution



Clear Height: 16' ideal for warehouse storage, racking, & manufacturing operations



Power & Infrastructure: Ample power capacity to support a variety of uses



Strategic Location: Easy access to I-69 & I-465, ensuring seamless connectivity



Adaptability: Flexible space layout to accommodate manufacturing, distribution, & industrial operations

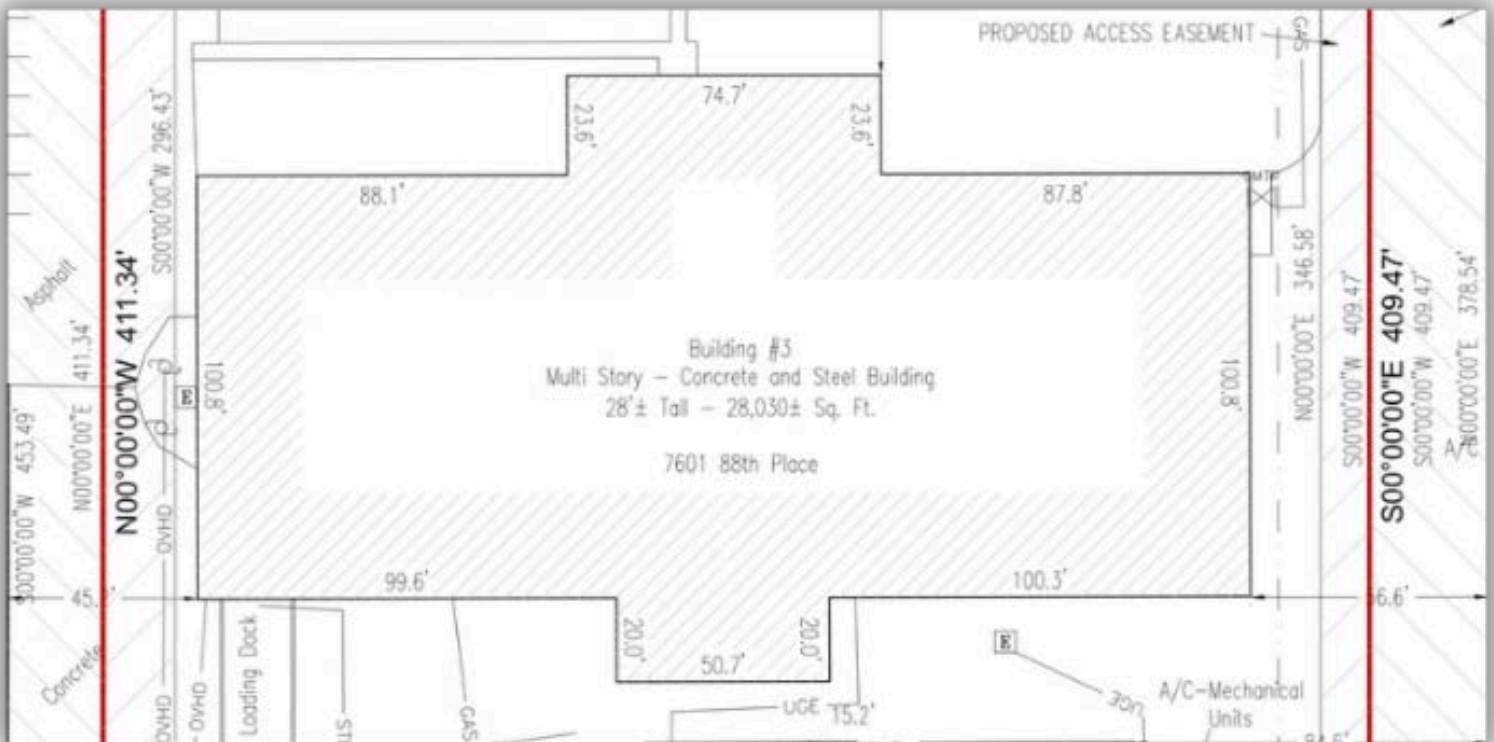


7601 E 88TH PLACE

BUILDING FLOOR PLAN

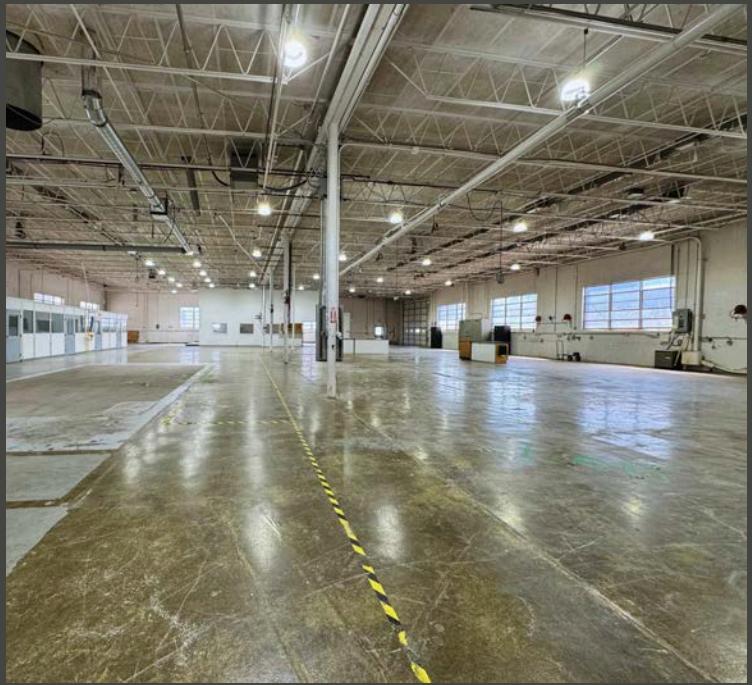
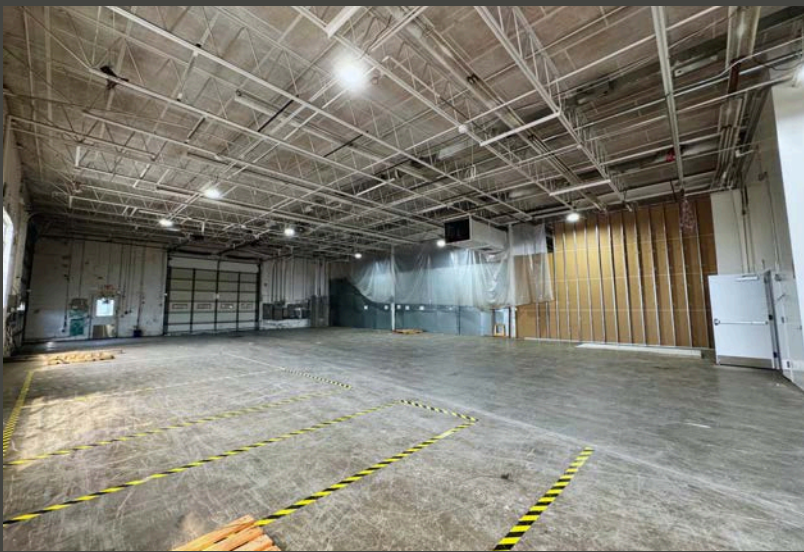
TOTAL SF: ±30,000 SF

Adaptable Layout – To Accommodate Manufacturing, Distribution, and Industrial Operations



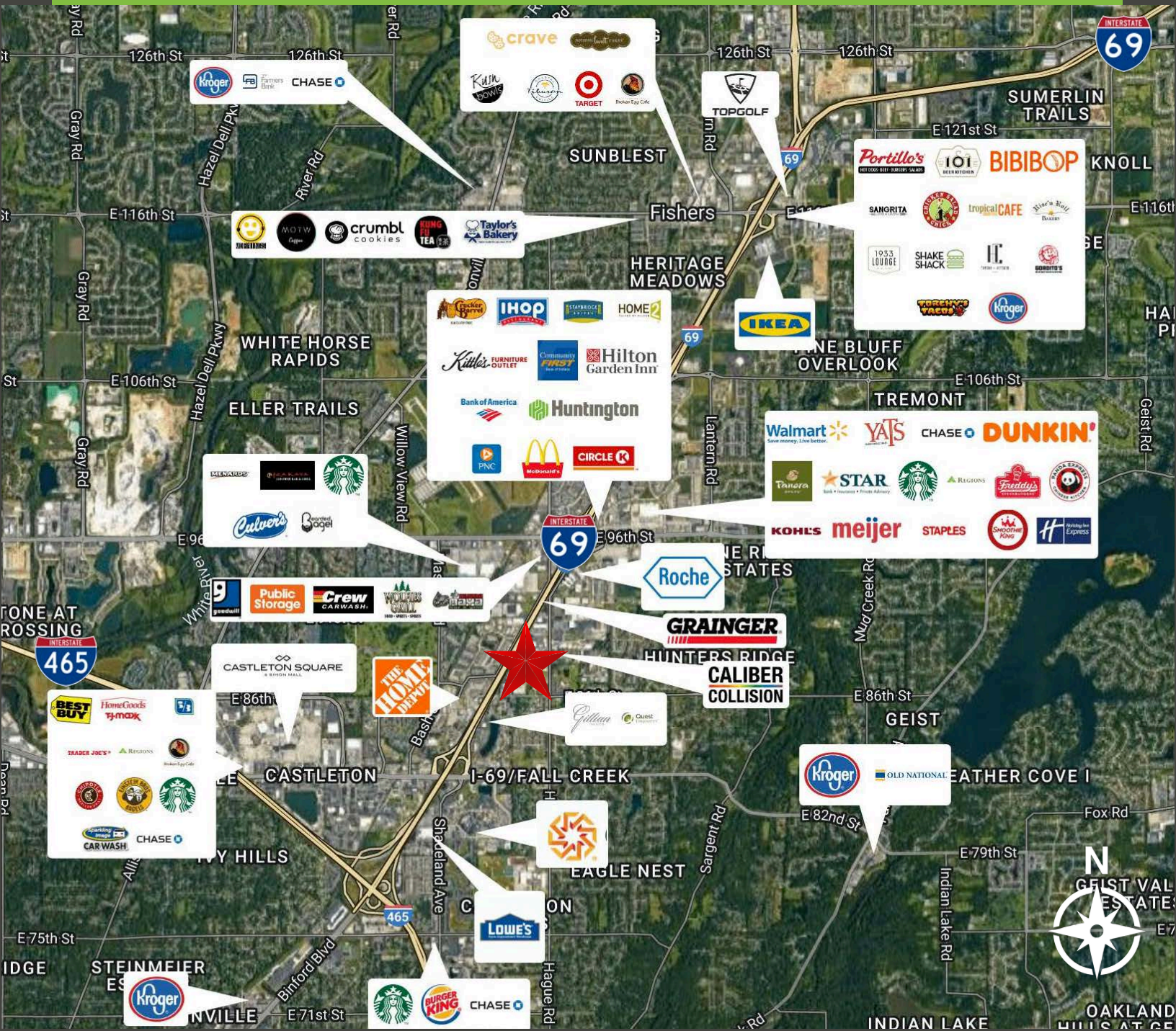
PROPERTY IMAGES

MANUFACTURING-READY FACILITY



FISHERS, IN – ONE OF THE FASTEST GROWING SUBURBS IN INDY METRO AREA

Transforming from a quiet bedroom community into a thriving city with a strong economy, a vibrant downtown, and a focus on innovation.



7601 E 88TH PLACE

Indianapolis, IN 46256

For leasing information:

Matt Carroll

Senior Director, Brokerage

Matt@alopg.com

C: 317.757.9205

Pat Huffine

Director

Pat@alopg.com

C: 317.670.0373

