

FOR LEASE



37 W. Century Road, Paramus NJ The Chester Building



Exceptional 3,500 sqft of Class A space

Suite Size +/-3,500 sqft
Property Type Medical Professional
Parking Ample on site
Space Newly built suite set up for Mental Health

- 1st Floor location
- Prime area of Paramus
- Reception Area with Waiting Room
- 12 Total rooms includes exam rooms, consultation rooms and offices
- ADA Bathroom, utility closet with slop sink
- Available Immediately
- Call for Pricing

The Chester Building is a prestigious Medical Professional building in the heart of Paramus. The building offers it tenants 24/7 access, handicap access, ample parking. Previously built for mental health professional this space is turn key for multiple types of tenancy.

The Location is second to none strategically located off of Rt 17 with easy access to the GSP, 208, 287 and Rt 4. Strong demographics and situated near the newly constructed Valley Hospital in Paramus.

Brian Springman
201.328.5993 BrianSpringman@KW.com
Broker Associate, KW Commercial
74 Godwin Ave, Ridgewood NJ

FOR LEASE

37 W. Century Rd. Paramus NJ



Brian Springman
Broker Associate
201.328.5993



Brian Springman
201.328.5993 BrianSpringman@KW.com
Broker Associate, KW Commercial
74 Godwin Ave, Ridgewood NJ

FOR LEASE

37 W. Century Rd. Paramus NJ



Brian Springman
Broker Associate
201.328.5993



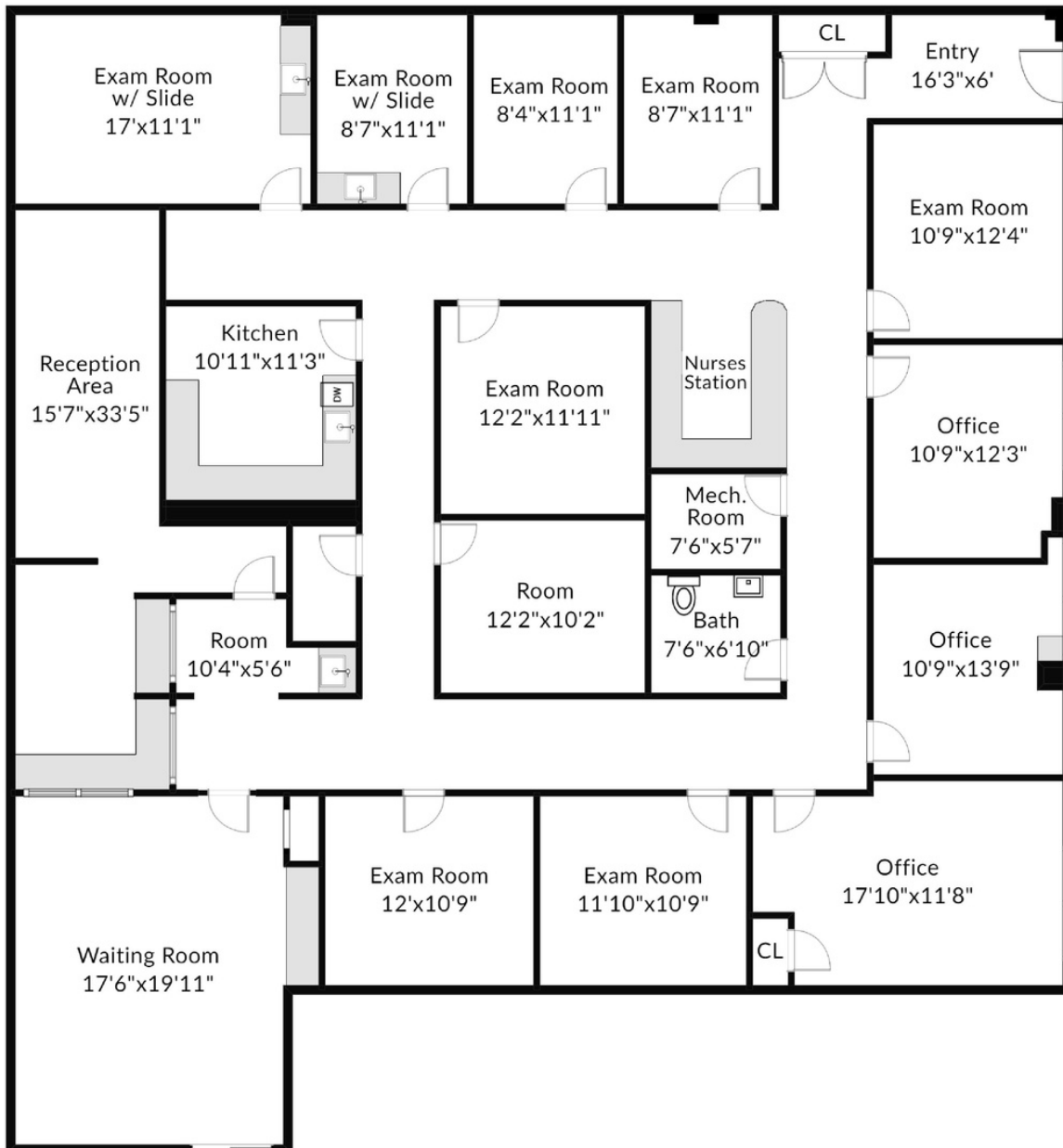
Brian Springman
201.328.5993 BrianSpringman@KW.com
Broker Associate, KW Commercial
74 Godwin Ave, Ridgewood NJ

FOR LEASE

37 W. Century Rd. Paramus NJ



Brian Springman
Broker Associate
201.328.5993



Brian Springman
201.328.5993 BrianSpringman@KW.com
Broker Associate, KW Commercial
74 Godwin Ave, Ridgewood NJ