

Development Site

In The Village of Watkins Glen

501 E. Fourth Street &
Magee Street
Watkins Glen, NY 14891

0.58 Acres on Route 414



Offering Overview

CBRE Upstate NY is pleased to offer this 0.58 acre development site at the South end of Seneca Lake in the heart of Watkins Glen. The property is prominently situated on Route 414 (E. Fourth St), the primary East-West traffic corridor serving the area, with secondary access from Magee Street. Neighboring developments include Walmart Supercenter, numerous restaurants and hotels.

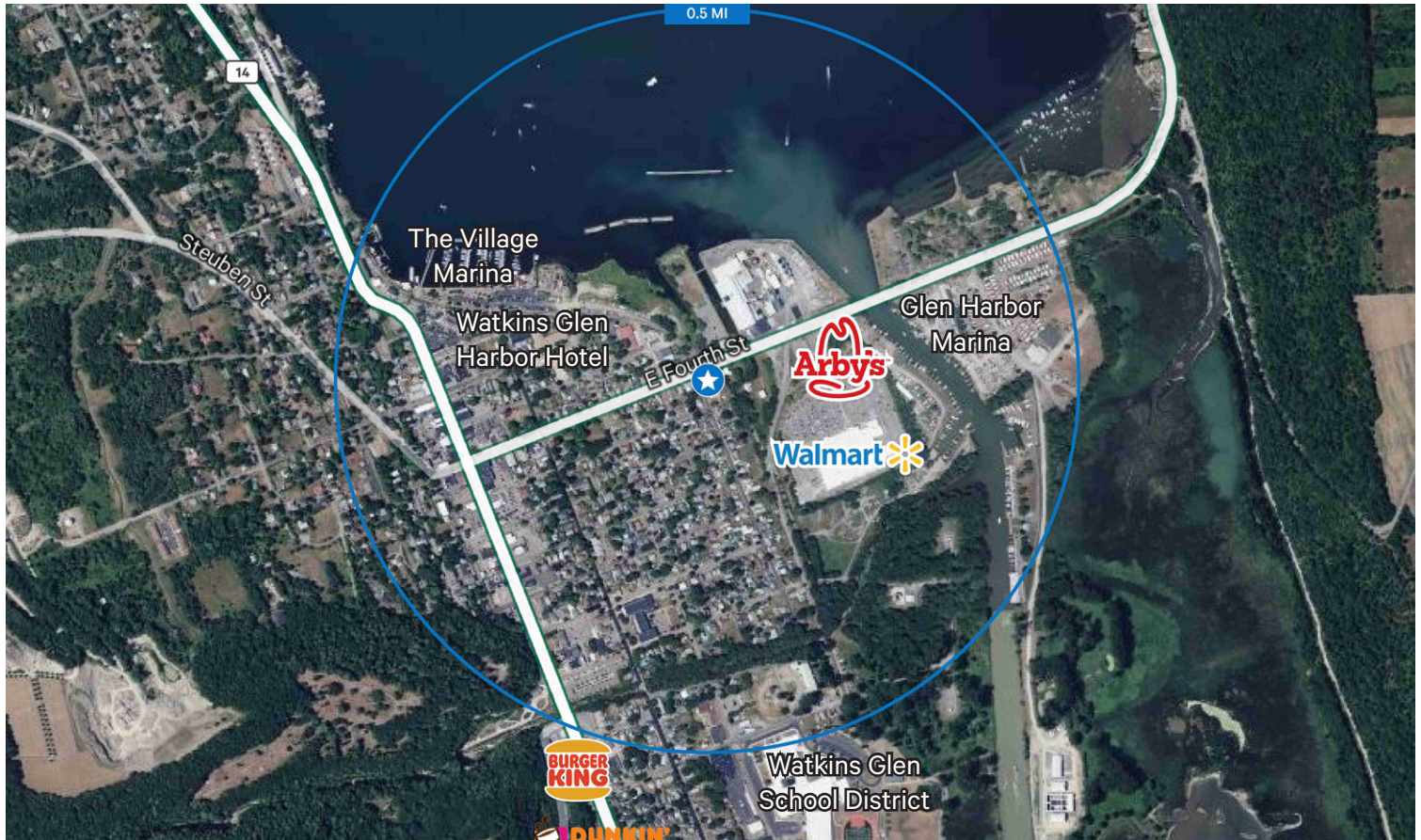
Offering Details

- + 0.58 Acres
- + Mixed-Use Zoning
- + Sale Price: \$345,000

Development Site

501 E. Fourth St & Magee St | Watkins Glen, NY 14891

For Sale



Property Overview

- + 0.58 Acres Total
- + Tax Parcels: 65.14-1-7; 65.14-1-8
- + Neighborhood Mixed-Use zoning district allows for a wide variety of potential uses
- + Highly visible corner location
- + Walking distance to all points in the Village
- + The site was previously improved with a retail building (concrete pad and parking lot remain)
- + Minutes from numerous retail amenities, Walmart Supercenter, restaurants, hotels, the Village Marina, and the campus of Watkins Glen High School

Contact Us

Courtney Janto

+1 585 559 4150

courtney.janto@cbre-rochester.com

Licensed Real Estate Salesperson

Andrew Gearhart

+1 585 784 3626

andrew.gearhart@cbre-rochester.com

Licensed Real Estate Salesperson

© 2025 CBRE Upstate NY, part of the CBRE Affiliate Network. All rights reserved. This information has been obtained from sources believed reliable, but has not been verified for accuracy or completeness. You should conduct a careful, independent investigation of the property and verify all information. Any reliance on this information is solely at your own risk. CBRE Upstate NY and the CBRE Upstate NY logo are service marks of CBRE Upstate NY. All other marks displayed on this document are the property of their respective owners, and the use of such logos does not imply any affiliation with or endorsement of CBRE Upstate NY. Photos herein are the property of their respective owners. Use of these images without the express written consent of the owner is prohibited.

CBRE Upstate NY

1350 University Avenue

Rochester, NY 14607

+1 585 240 8080

www.cbre.com/rochester

CBRE Upstate NY

PART OF THE AFFILIATE NETWORK

VILLAGE OF WATKINS GLEN

TOWN OF DIX

SCHUYLER COUNTY

NEW YORK

SCALE: 1"=30' XXXX XX, 2023

e-mail: info@larsonandsimololandsurveyors.com

web site: larsonandsimololandsurveyors.com

LARSON & SIMOLO
LAND SURVEYORS

P.O. BOX 624

WAYLAND, NEW YORK 14572

(585) 728-9150

LEGEND

- IRON STAKE SET
- ⊗ IRON STAKE FOUND
- +— UTILITY POLE / WIRES
- *— STOCKADE FENCE
- ⊙ MASONRY NAIL SET
- STORM DRAIN
- ✱ VALVE

