

# 2,670 SF & 1,050 SF Retail Available in Cleveland

11512 CLIFTON BOULEVARD | CLEVELAND | OHIO

FOR LEASE

*Cleveland*  
3.5 MILES

**2,670 SF & 1,050 SF AVAILABLE**



**Clifton Blvd - 18,834 VPD**

## RETAIL AT CLIFTON CORNERS

**Exclusive  
Contacts:**

**Kevin Moss**  
Senior Vice President  
216 363 6453  
[kevin.moss@cbre.com](mailto:kevin.moss@cbre.com)

**Vince Mingo**  
Vice President  
216 535 0188  
[vince.mingo@cbre.com](mailto:vince.mingo@cbre.com)

**CBRE**



# THE OPPORTUNITY

- Availabilities:
  - 2,670 SF Endcap
  - 1,050 SF Inline
- Located on Clifton Blvd and a block from the West 117th Intersection
- Join nearby retailers and restaurants: Lucky's Market, Chipotle, Pulp, Verizon, T-Mobile, Mad Chicken, Anytime Fitness, Shell Gas Station and many more!
- Abundant on-site parking
- Strong traffic counts of 18,834 VPD (Source: ODOT)
- Population of 124,809 people within a 3-mile radius



## QUICK STATS 3 MILE RADIUS



DAYTIME  
POPULATION  
**94,371**



POPULATION  
**124,809**



HOUSEHOLDS  
**59,733**

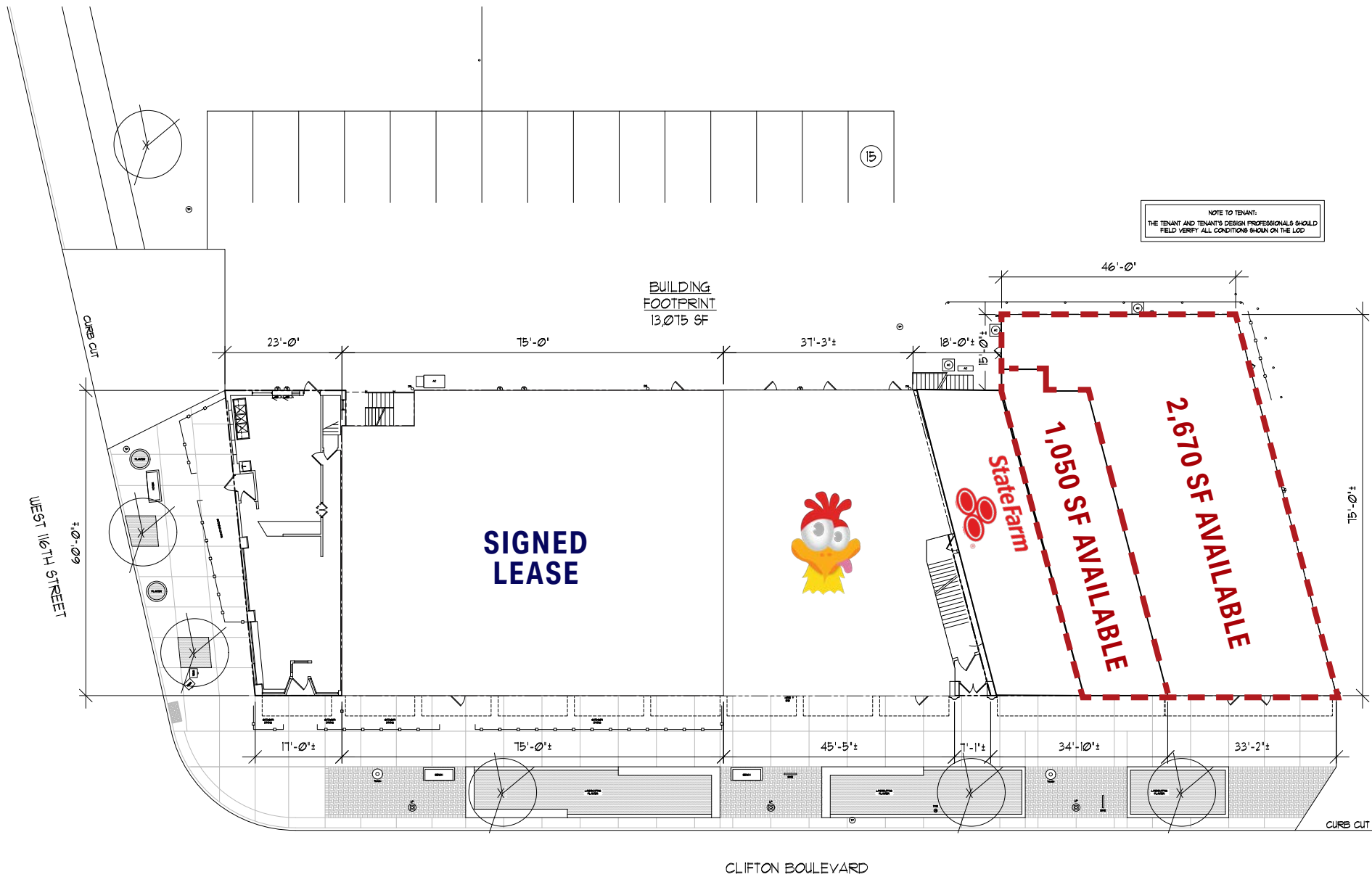


POPULATION  
25 & OVER  
**89,961**



AVG. HOUSEHOLD  
INCOME  
**\$80,045**

# SITE PLAN



NOTE TO TENANT:  
THE TENANT AND TENANT'S DESIGN PROFESSIONALS SHOULD  
FIELD VERIFY ALL CONDITIONS SHOWN ON THE LOD

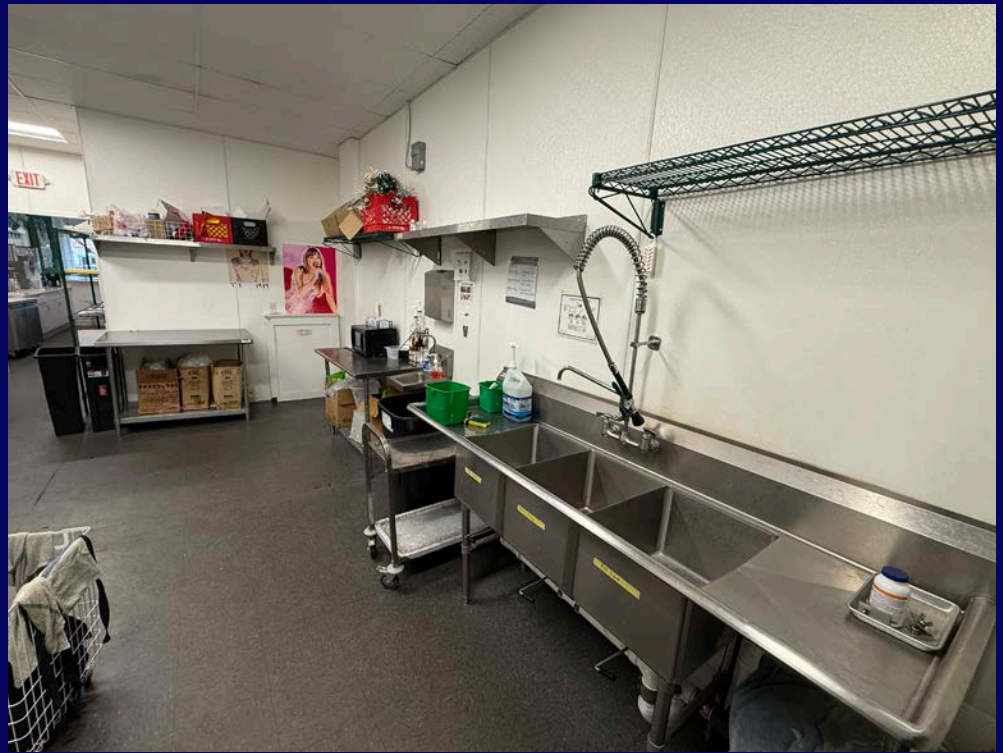


**2,670 SF SPACE**





**1,050 SF SPACE**







Walgreens

LAKEWOOD

Gordon  
FOOD SERVICE

CUBESMART  
self storage



2,670 SF & 1,050 SF AVAILABLE

Clifton Blvd - 18,834 VPD

T Mobile

CBRE



Summer Place

pier w  
RESTAURANT/LOUNGE

CVS  
pharmacy

CHIPOTLE  
MEXICAN GRILL

verizon

Lucky's Market

Edison's  
Pizza Kitchen

STARBUCKS

LANDMARK  
SMOKEHOUSE & BAR

State Farm

2,670 SF & 1,050 SF AVAILABLE

T Mobile

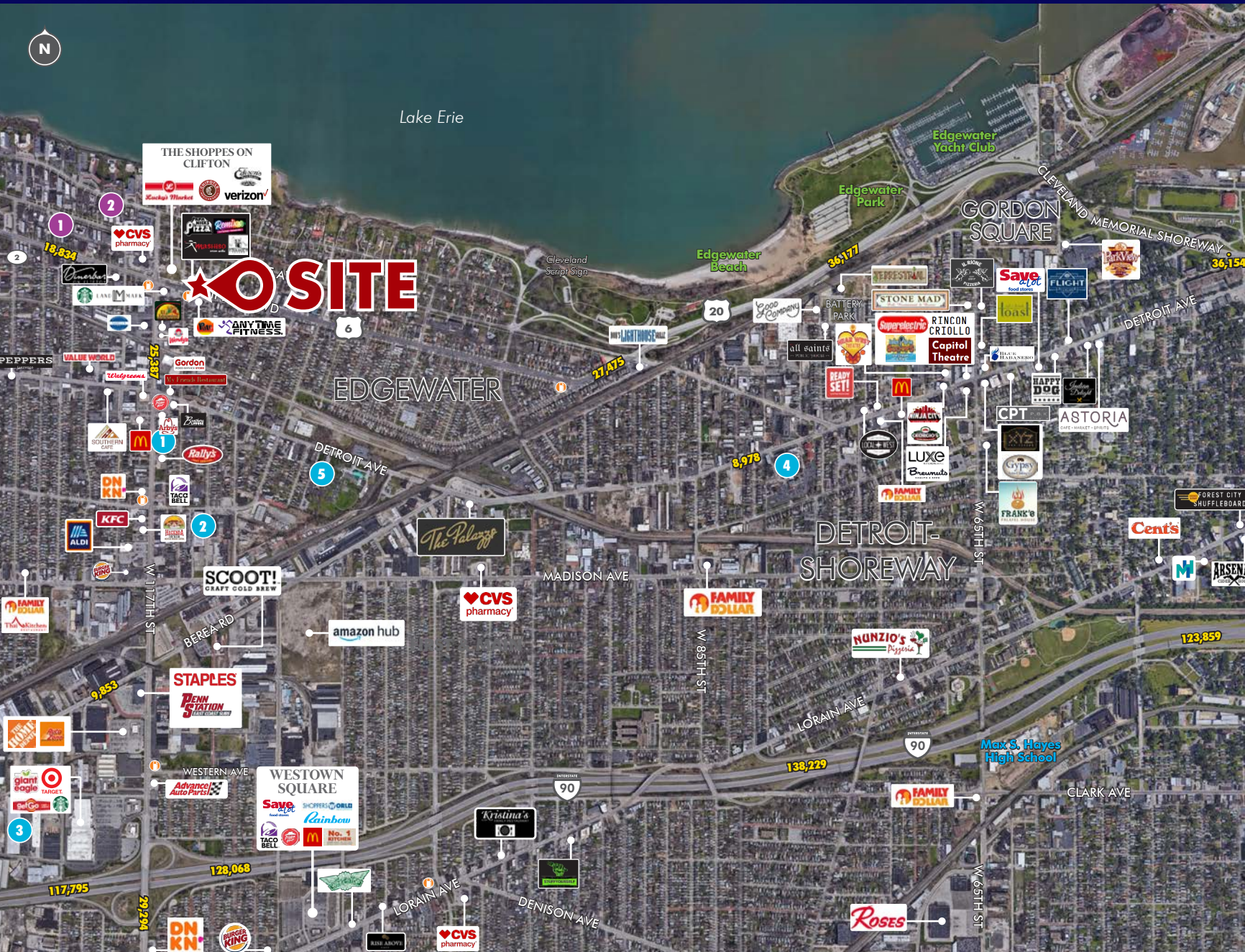
ANYTIME  
FITNESS

Clifton Blvd - 18,834 VPD

CBRE



# RETAIL TRADE MAP



## EDGEWATER RETAIL TRADE AREA

### TRADE AREA INFO

Madison Ave & W 85th St  
(3 Miles)

- Population: 144,565
- Daytime Population: 138,202
- Total Households: 68,603
- Average HH Income: \$75,060
- Total Businesses: 4,825
- Total Employees: 75,617

### MAJOR EMPLOYERS

1. First Choice Medical - 500
2. The Kirby Company - 425
3. AT&F - 201
4. Catholic Charities - 200
5. Eliza Jennings - 200

### HOTELS

2 Hotels/109 Rooms

1. Days Inn - 66
2. Travelodge - 43

© 2024 CBRE, Inc. All rights reserved. This information has been obtained from sources believed reliable, but has not been verified for accuracy or completeness. You should conduct a careful, independent investigation of the property and verify all information. Any reliance on this information is solely at your own risk. CBRE and the CBRE logo are service marks of CBRE, Inc. All other marks displayed on this document are the property of their respective owners, and the use of such logos does not imply any affiliation with or endorsement of CBRE.

Licensed Real Estate Broker

Updated: September 9, 2024



# RETAIL TRADE MAP



## LAKEWOOD- CLEVELAND WEST RETAIL TRADE AREA

### TRADE AREA INFO

Madison Ave & Bunts Rd  
(3 Miles)

- Population: 137,592
- Daytime Population: 104,114
- Total Households: 65,242
- Average HH Income: \$83,274
- Total Businesses: 3,869
- Total Employees: 42,348

### MAJOR OFFICE BLDGS

2.3 MSF (3 Miles)

1. Lakewood Center North - 258,470 SF
2. INA Building - 210,000 SF
3. Lakewood Center West - 77,112 SF

### HOTELS

2 Hotels/109 Rooms

1. Days Inn - 66
2. Travelodge - 43

### MAJOR EMPLOYERS

1. Fairview Hospital - 2,000 (Off Map)
2. PPG Industries - 650 (Off Map)
3. FirstChoice - 500
4. The Kirby Company - 425
5. Alpha Packaging - 300 (Off Map)

© 2024 CBRE, Inc. All rights reserved. This information has been obtained from sources believed reliable, but has not been verified for accuracy or completeness. You should conduct a careful, independent investigation of the property and verify all information. Any reliance on this information is solely at your own risk. CBRE and the CBRE logo are service marks of CBRE, Inc. All other marks displayed on this document are the property of their respective owners, and the use of such logos does not imply any affiliation with or endorsement of CBRE.

Licensed Real Estate Broker  
Updated: September 9, 2024



# DEMOGRAPHICS

	1 Mile	3 Miles	5 Miles
2025 Population - Current Year Estimate	21,111	124,809	254,451
2025 Daytime Population	16,417	94,371	276,161
2025 Households - Current Year Estimate	12,661	59,733	121,694
2025 Average Household Income	\$75,642	\$81,490	\$84,137
2030 Average Household Income Projection	\$84,409	\$91,999	\$95,147
2025 Median Household Income	\$52,457	\$56,694	\$58,466
2025 Population 25 and Over	16,677	89,961	184,036

## EXCLUSIVE CONTACTS:

**Kevin Moss**

Senior Vice President

216 363 6453

[kevin.moss@cbre.com](mailto:kevin.moss@cbre.com)

**Vince Mingo**

Vice President

216 535 0188

[vince.mingo@cbre.com](mailto:vince.mingo@cbre.com)

© 2025 CBRE, Inc. All rights reserved. This information has been obtained from sources believed reliable, but has not been verified for accuracy or completeness. You should conduct a careful, independent investigation of the property and verify all information. Any reliance on this information is solely at your own risk. CBRE and the CBRE logo are service marks of CBRE, Inc. All other marks displayed on this document are the property of their respective owners, and the use of such logos does not imply any affiliation with or endorsement of CBRE. Photos herein are the property of their respective owners. Use of these images without the express written consent of the owner is prohibited. Licensed Real Estate Broker.

**CBRE**