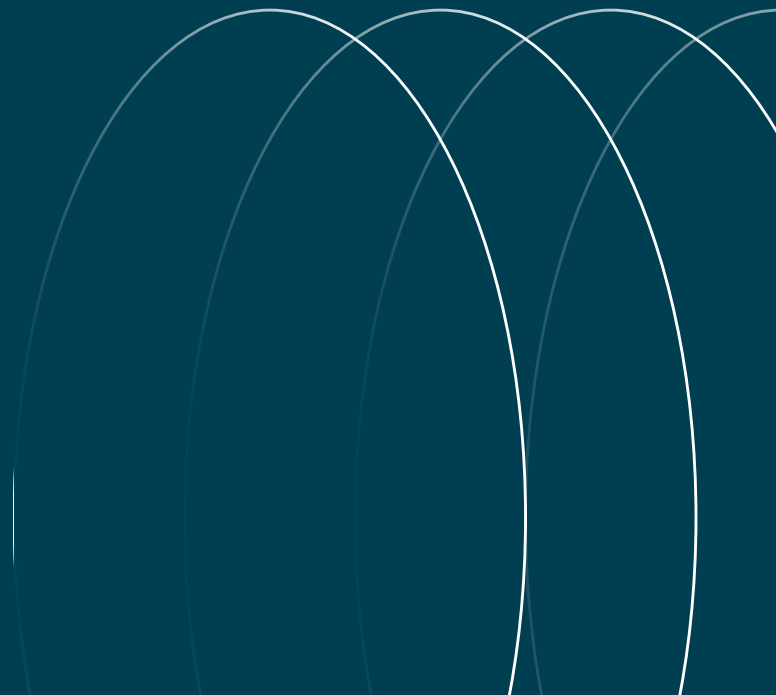




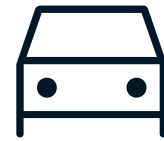
# Sublease

Dulaney Center  
849 Fairmount Ave  
Towson, MD 21286



# Building Details

- Vacancy: Suite 110
  - RSF: 2,100
  - Available for sublease
  - Lease Expiration 3/31/2027
- Rental Rate: \$25.39 full service, net of janitorial
- Pediatrics and primary care office with lab-corp adjacent.
- Dulaney Center amenities: atrium, banking, concierge, conferencing facility, corner lot, dry cleaner, fitness center, hotel
- Class A building



Free covered parking



Immediate access to  
Interstate 695

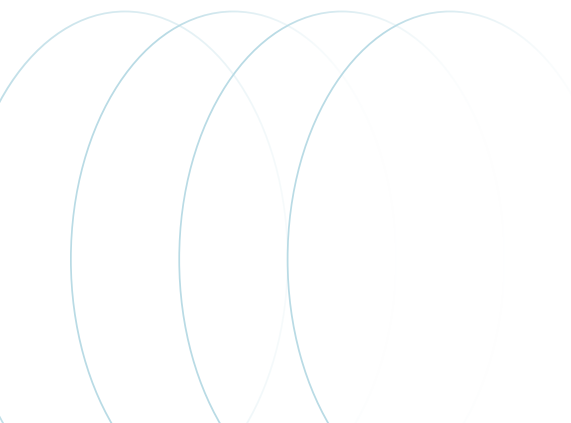
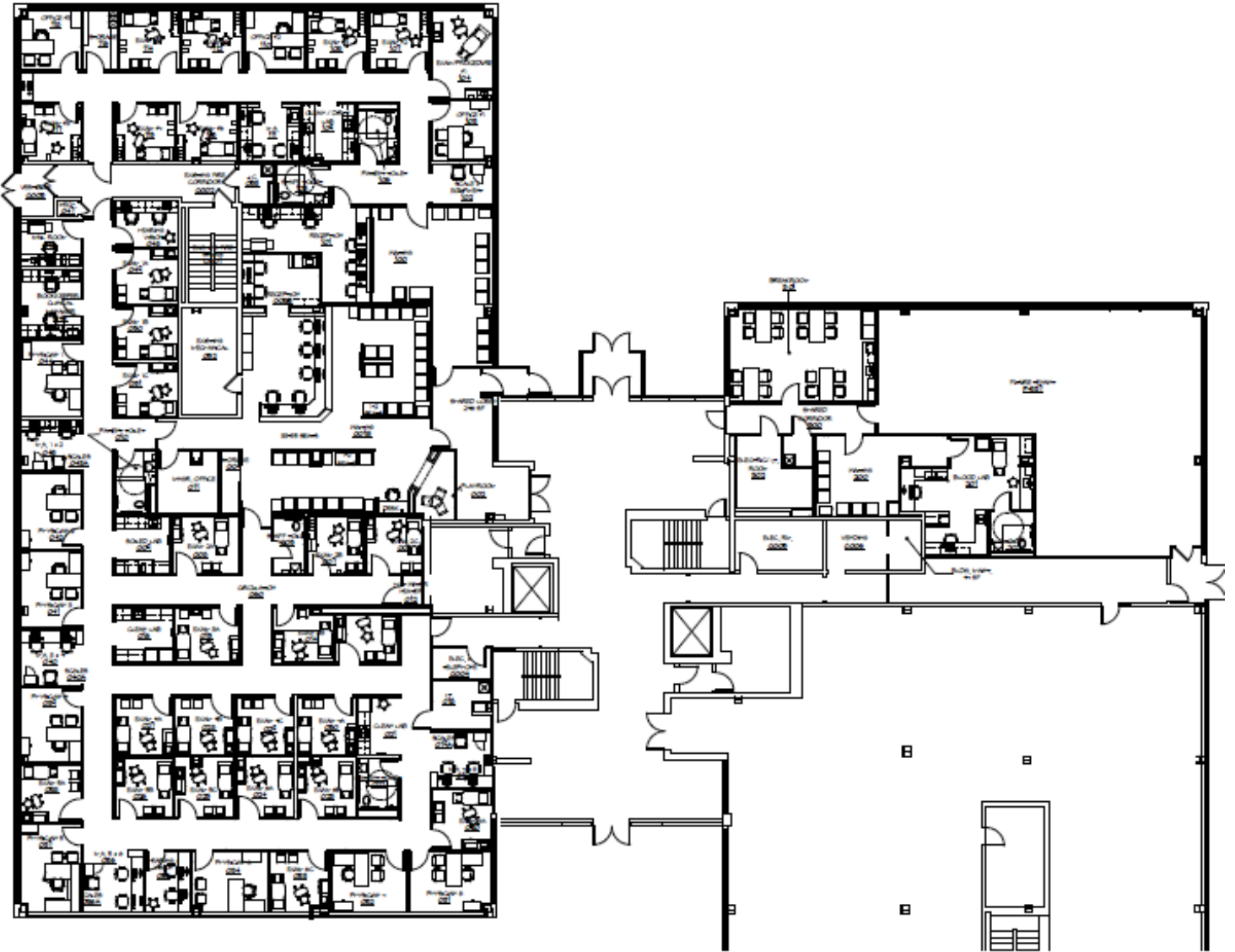


Within walking distance  
of Towson Town Center  
and additional retail and  
dining venues

849 Fairmount Ave

# Floor plan

Suite 110: 2,100 sf





**Contacts :**

Rachel Cappetta  
Senior Associate  
rachel.cappetta@jll.com  
443 451 2607

Rob Freedman  
Managing Director  
rob.freedman@jll.com  
410 952 9444

