

PRIME SUITES FOR LEASE ON KETTLEMAN LANE



1420 WEST KETTLEMAN LANE

Lodi, CA 95242

ANDY LE - JUNIOR VICE PRESIDENT

209.471.6358 | andy@fcrei.com

CA DRE #02110117

JOSE ALTAMIRANO - ASSOCIATE

209.636.3818 | jose@fcrei.com

CA DRE #02240190

PROPERTY SUMMARY

ANDY LE

209.471.6358 | andy@fcrei.com

CA DRE #02110117

JOSE ALTAMIRANO

209.636.3818 | jose@fcrei.com

CA DRE #02240190



PROPERTY DESCRIPTION

Located at 1420 W Kettleman Lane in Lodi, CA, this property offers a prime central location along one of Lodi's main corridors, surrounded by national and regional tenants providing strong visibility and steady traffic. The building features common area restrooms, elevator access to second-floor suites, and ample on-site parking. Ideal for office or service-based users.

PROPERTY HIGHLIGHTS

- Prime location on W Kettleman Lane — Lodi's main retail corridor.
- Common area restrooms.
- Elevator access to second-floor suites.
- Ample on-site parking for tenants and visitors.
- Easy access to major roadways and surrounding neighborhoods.

OFFERING SUMMARY

Lease Rate

Contact Broker

Available SF

1,283 – 4,329 SF

Building Size

46,840 SF

AVAILABLE SPACES

SUITE	FLOOR	LEASE RATE	SIZE
Suite B2	Ground Floor	Contact Broker	1,283 SF
Suite S	Second Floor	Contact Broker	1,432 SF
Suite N	Second Floor	Contact Broker	4,329 SF



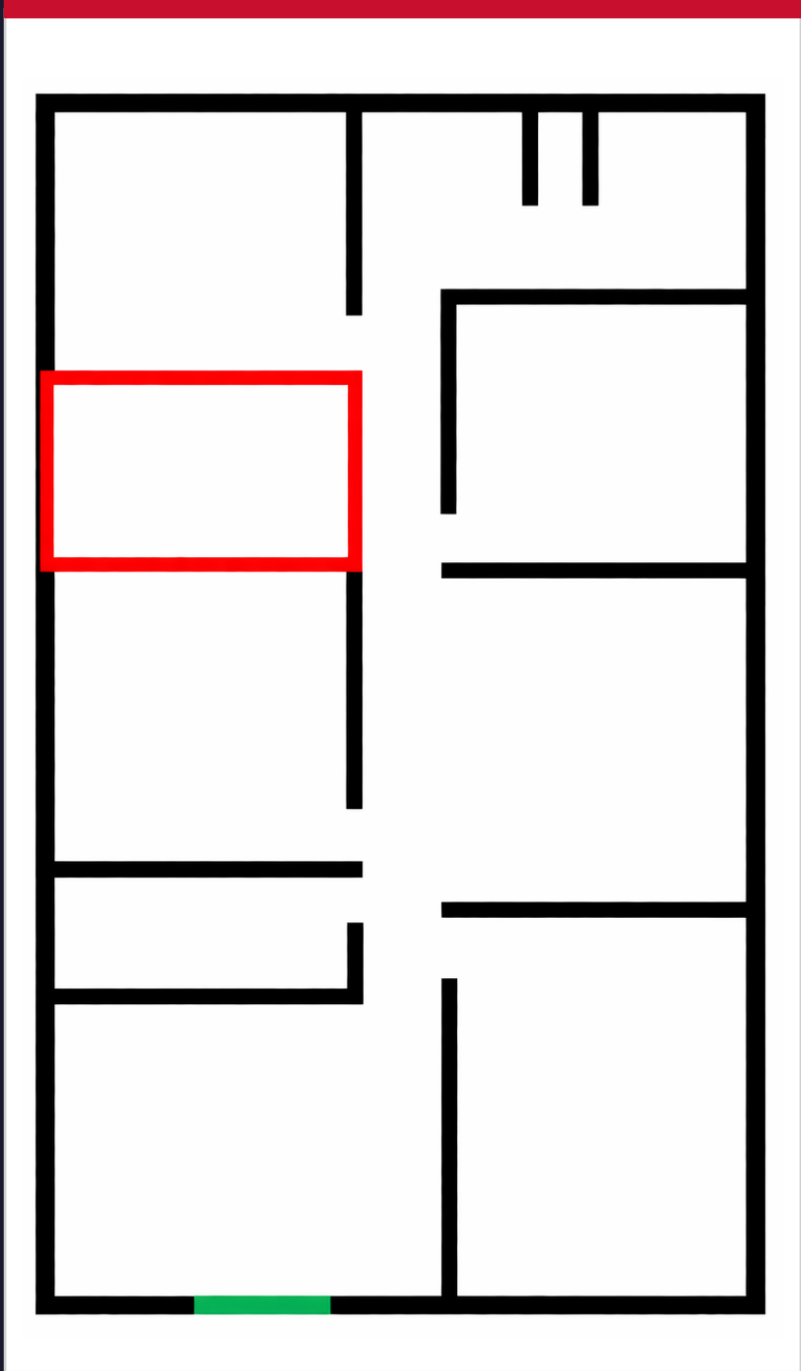
SUITE B2 FLOOR PLAN

ANDY LE

209.471.6358 | andy@fcrei.com
CA DRE #02110117

JOSE ALTAMIRANO

209.636.3818 | jose@fcrei.com
CA DRE #02240190



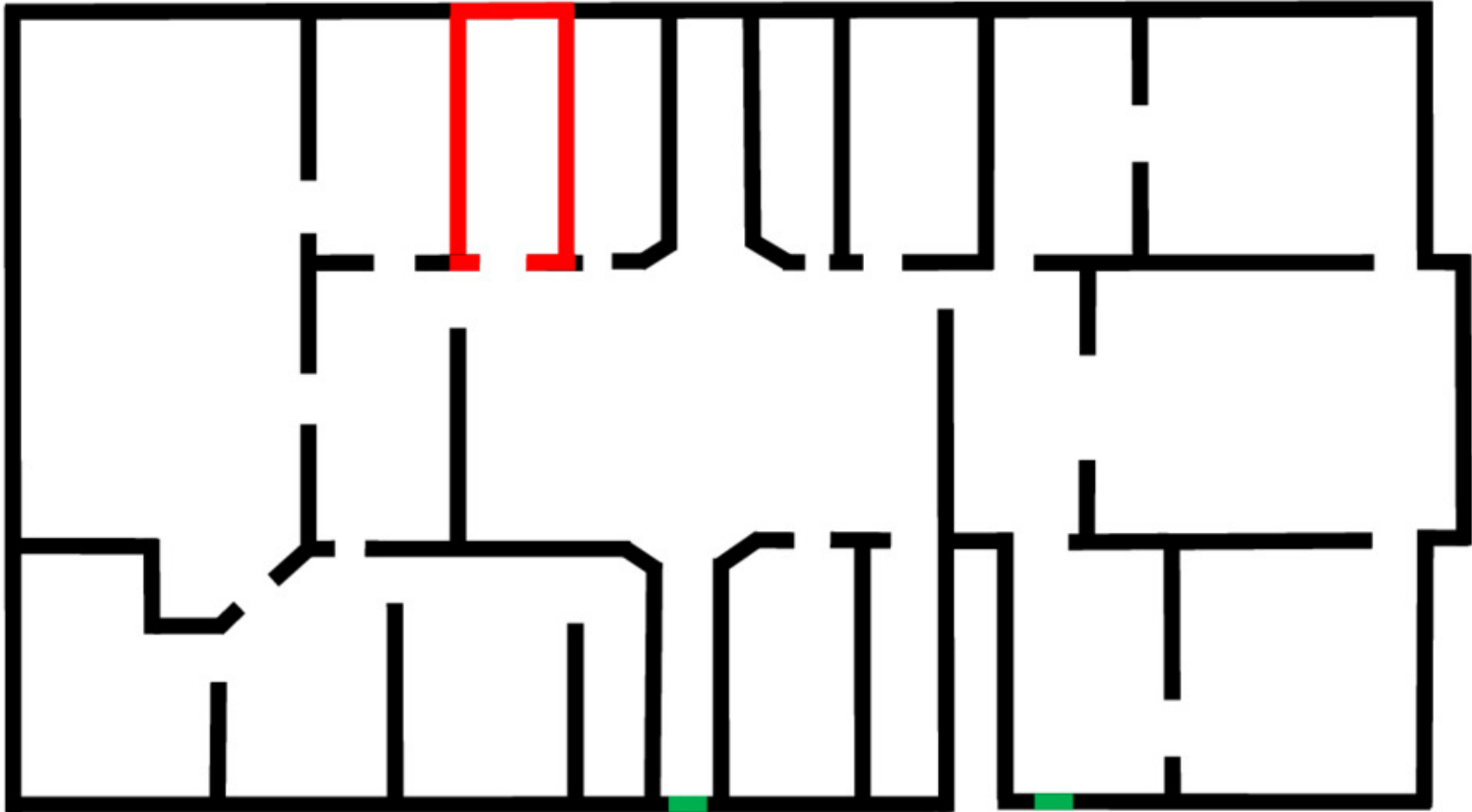
LEGEND

- Bathroom
- Entrance / Exit Door

SUITE N FLOOR PLAN

ANDY LE
209.471.6358 | andy@fcrei.com
CA DRE #02110117

JOSE ALTAMIRANO
209.636.3818 | jose@fcrei.com
CA DRE #02240190



LEGEND

- Kitchen
- Entrance / Exit Door

SUITE N — ADDITIONAL PHOTOS

ANDY LE
209.471.6358 | andy@fcrei.com
CA DRE #02110117

JOSE ALTAMIRANO
209.636.3818 | jose@fcrei.com
CA DRE #02240190



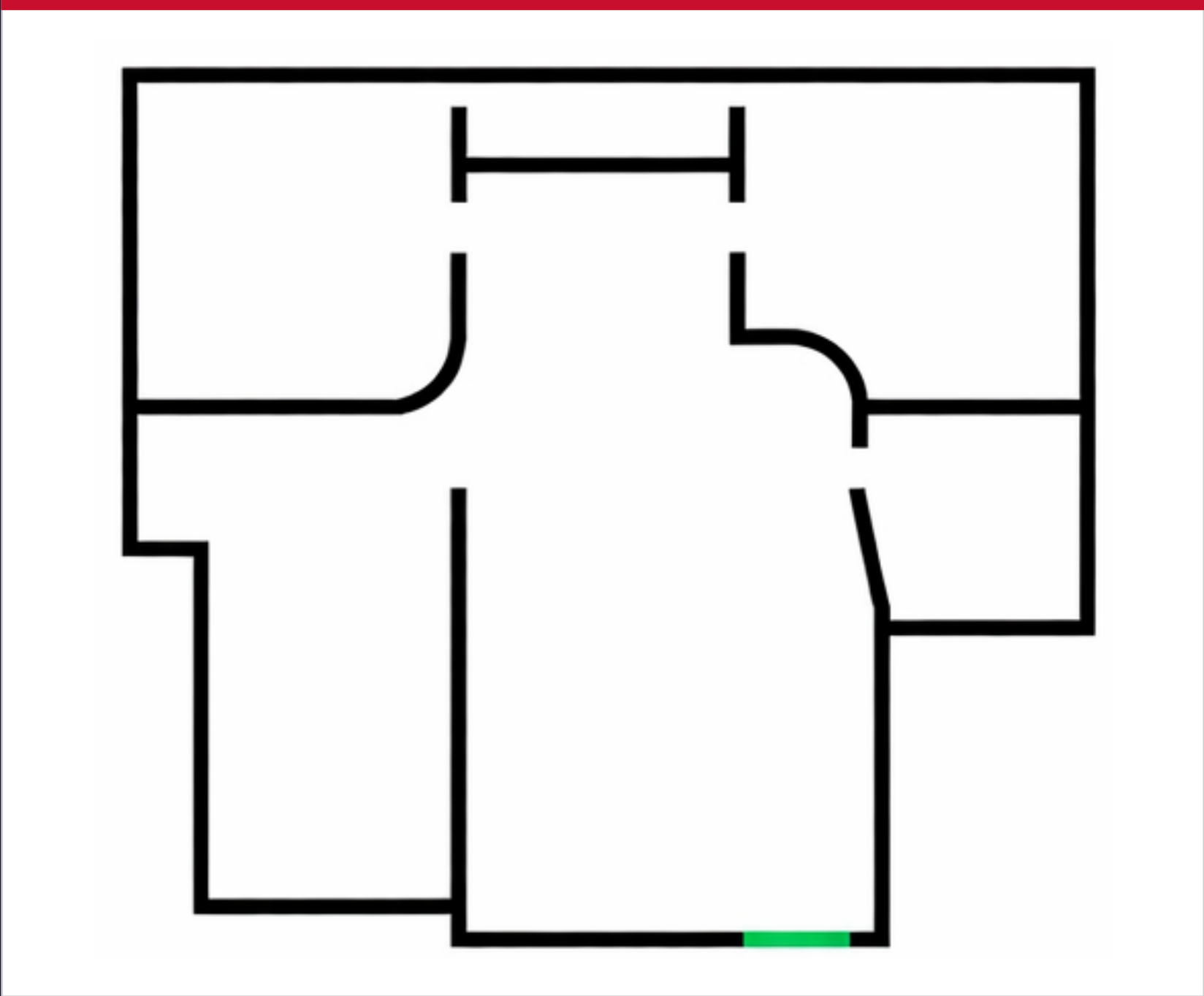
SUITE S FLOOR PLAN

ANDY LE


209.471.6358 | andy@fcrei.com
CA DRE #02110117

JOSE ALTAMIRANO

209.636.3818 | jose@fcrei.com
CA DRE #02240190



LEGEND

 Entrance / Exit Door

SUITE S — ADDITIONAL PHOTOS

ANDY LE
209.471.6358 | andy@fcrei.com
CA DRE #02110117

JOSE ALTAMIRANO
209.636.3818 | jose@fcrei.com
CA DRE #02240190





LODI MUNICIPAL SERVICES CENTER

DOLLAR TREE ROSS DRESS FOR LESS

BANK OF AMERICA

KOHL'S

food maxx

CVS

F&M BANK

PNC

IHOP

Chevron

AutoZone

TOKAY HIGH-SCHOOL

SUBJECT PROPERTY

W KETTLEMAN LN

BAC Community Bank

DEMOGRAPHICS MAP & REPORT

ANDY LE

209.471.6358 | andy@fcrei.com

CA DRE #02110117

JOSE ALTAMIRANO

209.636.3818 | jose@fcrei.com

CA DRE #02240190

POPULATION

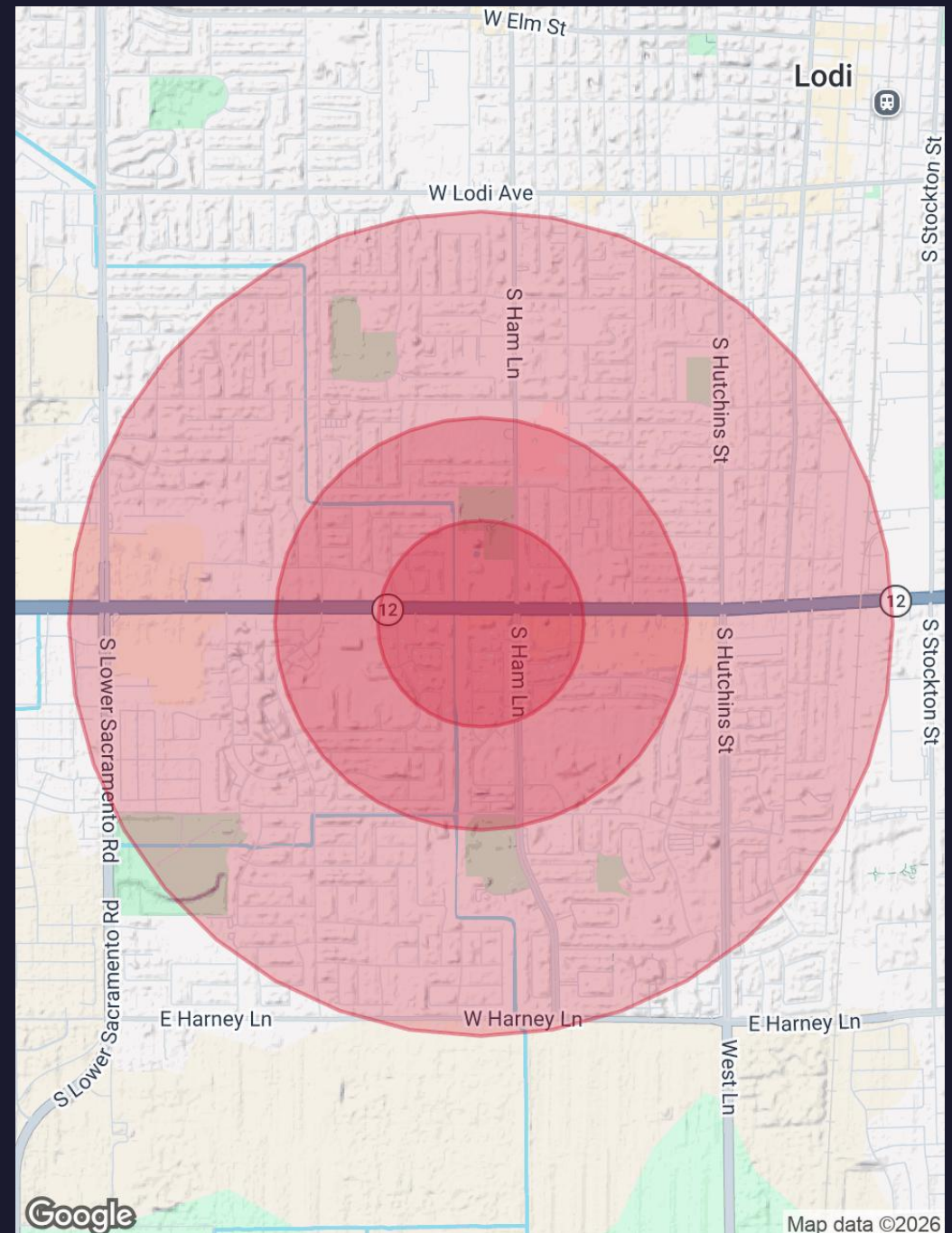
	0.25 MI	0.5 MI	1 MI
Total Population	1,158	4,973	21,538
Average Age	38.9	39.8	37.7
Avg Age (Male)	39.0	39.9	36.3
Avg Age (Female)	38.7	39.4	39.2

HOUSEHOLDS & INCOME

	0.25 MI	0.5 MI	1 MI
Total Households	423	1,836	7,625
Persons per HH	2.7	2.7	2.8
Avg HH Income	\$117,355	\$114,581	\$112,815
Avg House Value	\$511,267	\$504,470	\$516,137

RACE

	0.25 MI	0.5 MI	1 MI
White	742 (64.1%)	3,140 (63.1%)	11,649 (54.1%)
Black	8 (0.7%)	40 (0.8%)	213 (1.0%)
Asian	64 (5.5%)	354 (7.1%)	1,972 (9.2%)
Hawaiian	6 (0.5%)	22 (0.4%)	35 (0.2%)
Amer. Indian	9 (0.8%)	36 (0.7%)	99 (0.5%)
Other	103 (8.9%)	465 (9.4%)	2,804 (13.0%)



2023 American Community Survey (ACS)