

SALE



REDEVELOPMENT SITE

2850 S. MERIDIAN ST.



2850 S. MERIDIAN ST., INDIANAPOLIS, IN 46225

PROPERTY OVERVIEW

Within minutes to Downtown Indianapolis and close proximity to I-65 and I-70, this centrally-located, approximately 1-acre site is an excellent redevelopment opportunity.

HIGHLIGHTS

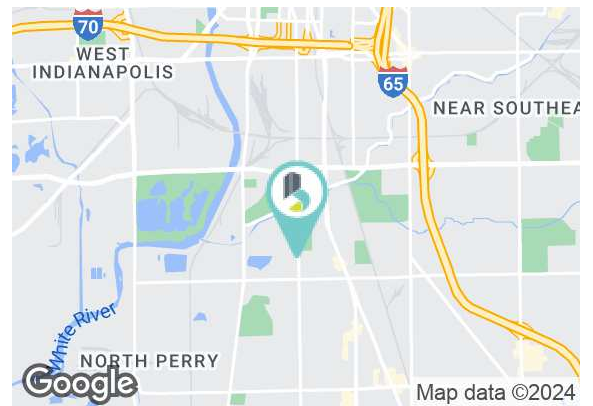
- Size: Approx. 1.0 Acre
- Zoning: D-5 with a Variance of Use for any C-3 (commercial uses)
- Existing Building: Approximately 1,200 SF
- Driving Distances:
 - Property to I-65: 1.9 Miles
 - Property to I-70: 2.5 Miles
 - Property to Downtown: 3.1 Miles

SALE PRICE

\$295,000

Lot Size:

Approx. 1.0 Acre



BRADLEY COMPANY
310 E. 96th St., Suite 100
Indianapolis, IN 46240
317.663.6000

KIM HARTMAN, CPM
Senior Vice President
317.716.5895
khartman@bradleyco.com

JOLYNN SHALLOP WRIGHT
Broker
317.716.1944
jshallopwright@bradleyco.com

TOM OSBORNE, SIOR
Principal
317.258.0179
tosborne@bradleyco.com



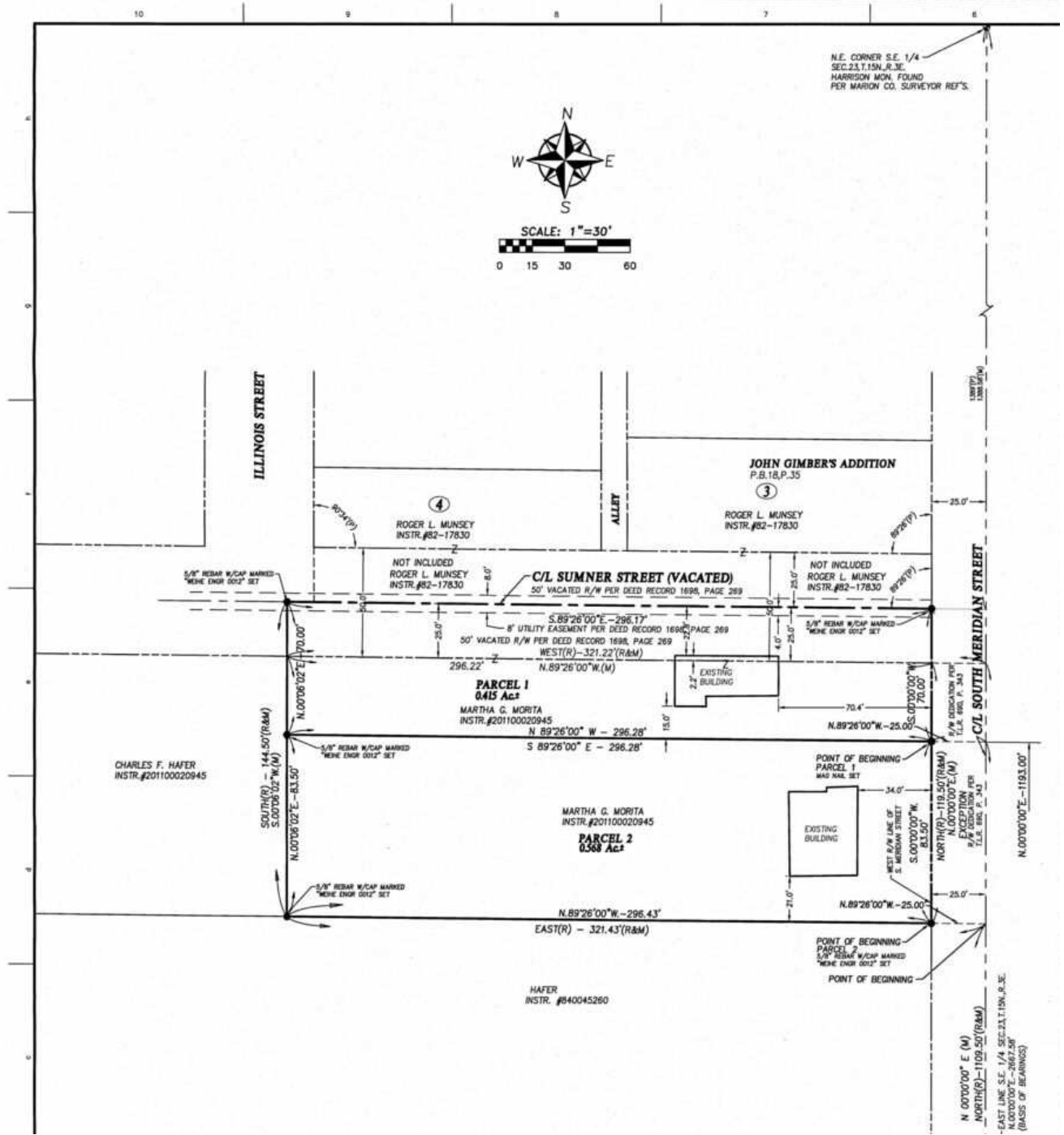
BRADLEYCO.COM



2850 S. MERIDIAN ST., INDIANAPOLIS, IN 46225

SALE

REDEVELOPMENT SITE



KIM HARTMAN, CPM
 Senior Vice President
 317.716.5895
 khartman@bradleyco.com

JOLYNN SHALLOP WRIGHT
 Broker
 317.716.1944
 jshallopwright@bradleyco.com

TOM OSBORNE, SIOR
 Principal
 317.258.0179
 tosbome@bradleyco.com