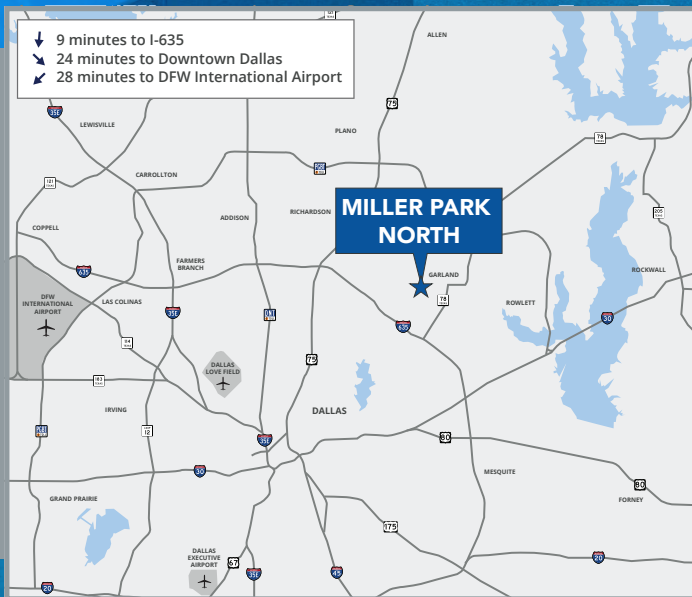




MILLER PARK NORTH

2755 N Miller Park Drive, Suite 200 | Garland, Texas 75042



PROPERTY HIGHLIGHTS

- Building SF: 281,643 SF
- Available SF: 16,800 SF
- Clear Height: 28'
- Parking Ratio: 1.07/1,000
- Available 7/1/24
- Close Proximity to I-635
- Fully Sprinklered
- Built in 1987

CONTACT



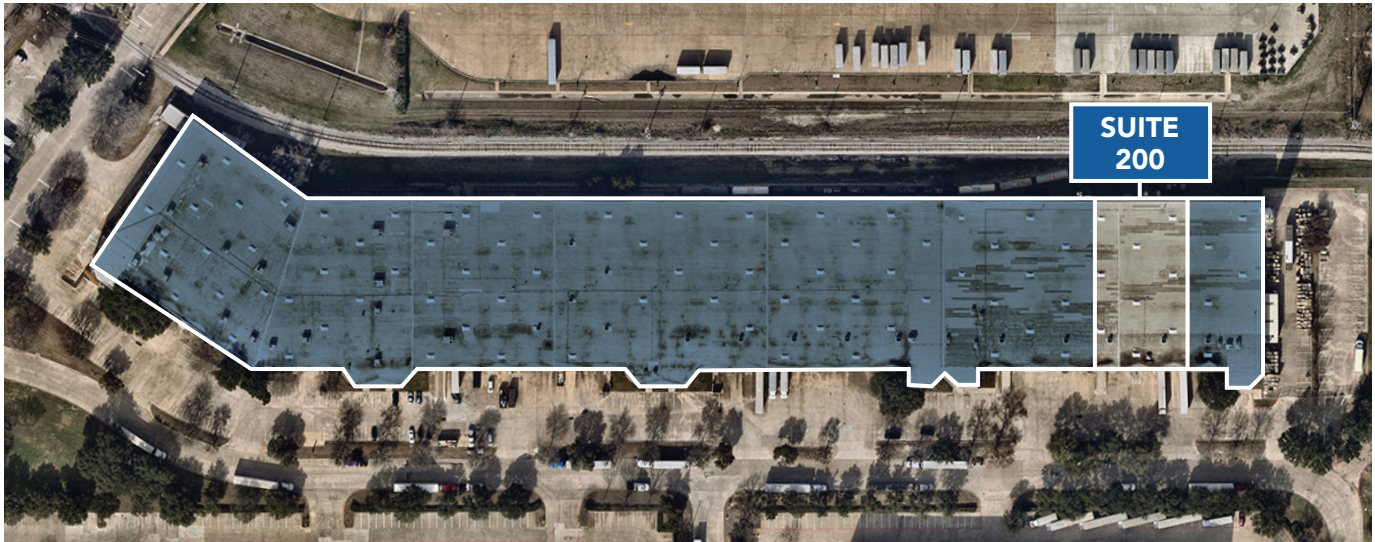
Josh Barnes, SIOR
972.280.8353
jbarnes@holtlunsford.com

Blake Troiani
972.265.0126
btroiani@holtlunsford.com

Mitch Cantwell
972.265.0133
mcantwell@holtlunsford.com

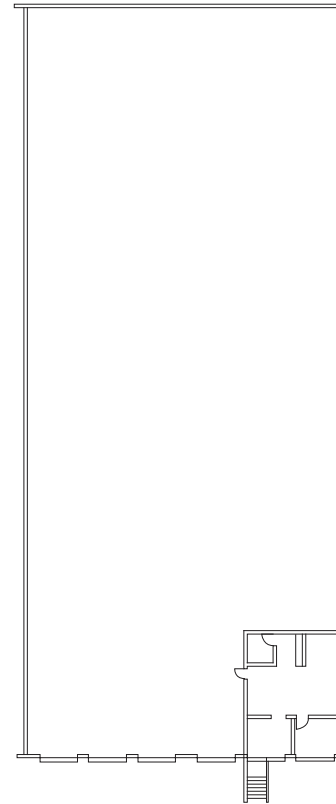
MILLER PARK NORTH

2755 N Miller Park Drive, Suite 200 | Garland, Texas 75042



SUITE HIGHLIGHTS

- 16,800 SF
- 878 SF Office
- 15,922 SF Warehouse
- 28' Clear Height
- Fully Sprinklered
- Three (3) Dock High Doors
- One (1) Ramped Door



CONTACT



Josh Barnes, SIOR

972.280.8353

jbarnes@holtlunsford.com

Blake Troiani

972.265.0126

btroiani@holtlunsford.com

Mitch Cantwell

972.265.0133

mcantwell@holtlunsford.com

MILLER PARK NORTH

2755 N Miller Park Drive, Suite 200 | Garland, Texas 75042

MADE READY!



CONTACT



HOLT LUNSFORD
COMMERCIAL

Josh Barnes, SIOR
972.280.8353
jbarnes@holtlunsford.com

Blake Troiani
972.265.0126
btroiani@holtlunsford.com

Mitch Cantwell
972.265.0133
mcantwell@holtlunsford.com

